

**fisher  
german**

# Brunswick Works

Old Street

28 Brunswick Place, London, N1 6EB

40 Desks  
Self Contained Offices

2,050 Sq.ft



**Licence** | £18,500 pcm incl.



## Further information

### Description

Brunswick Works is a redbrick post-modern building located down a quiet street in East London's tech hub. It has only 3 studios, all accessed via a communal lobby area. Each unit can accommodate up to 40 desks, with multiple meeting rooms and a private kitchen. There's also a shared terrace accessible via a rear stairway. All studios are available on a fully managed basis on a single, all-inclusive monthly fee.

### Location

Old Street roundabout is within a 2 minute walk, giving excellent access to underground and overground train lines. Nearby Shoreditch is a hotspot for eclectic shops, bars and restaurants - should business take you away from the office.

### Licence Term

New Licences are available for a term by arrangement.

### Accommodation

Desks	Size Sq.ft	Price (Monthly)	Available
40	2,050	£18,500	July 2025



Fully  
Furnished



Kitchen



Ultra Fast  
Internet



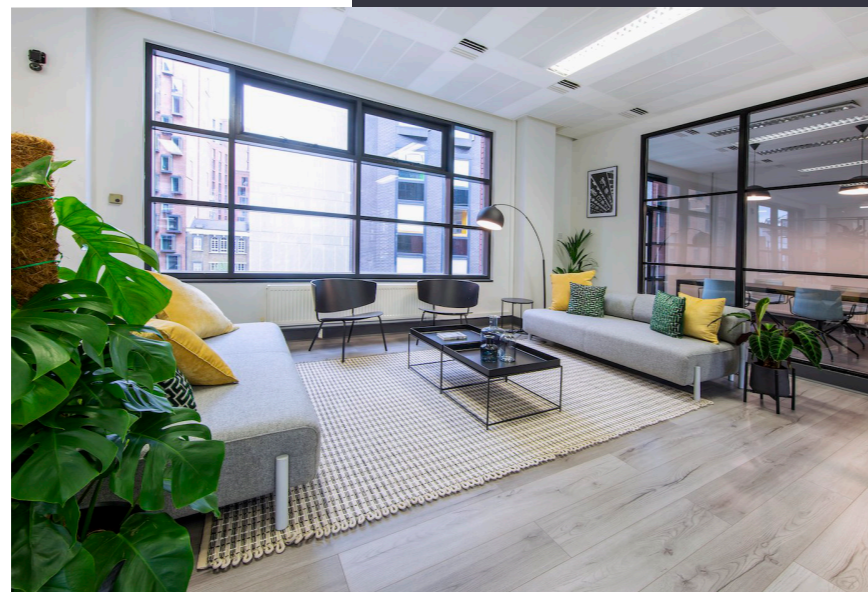
Meeting  
Rooms



Showers

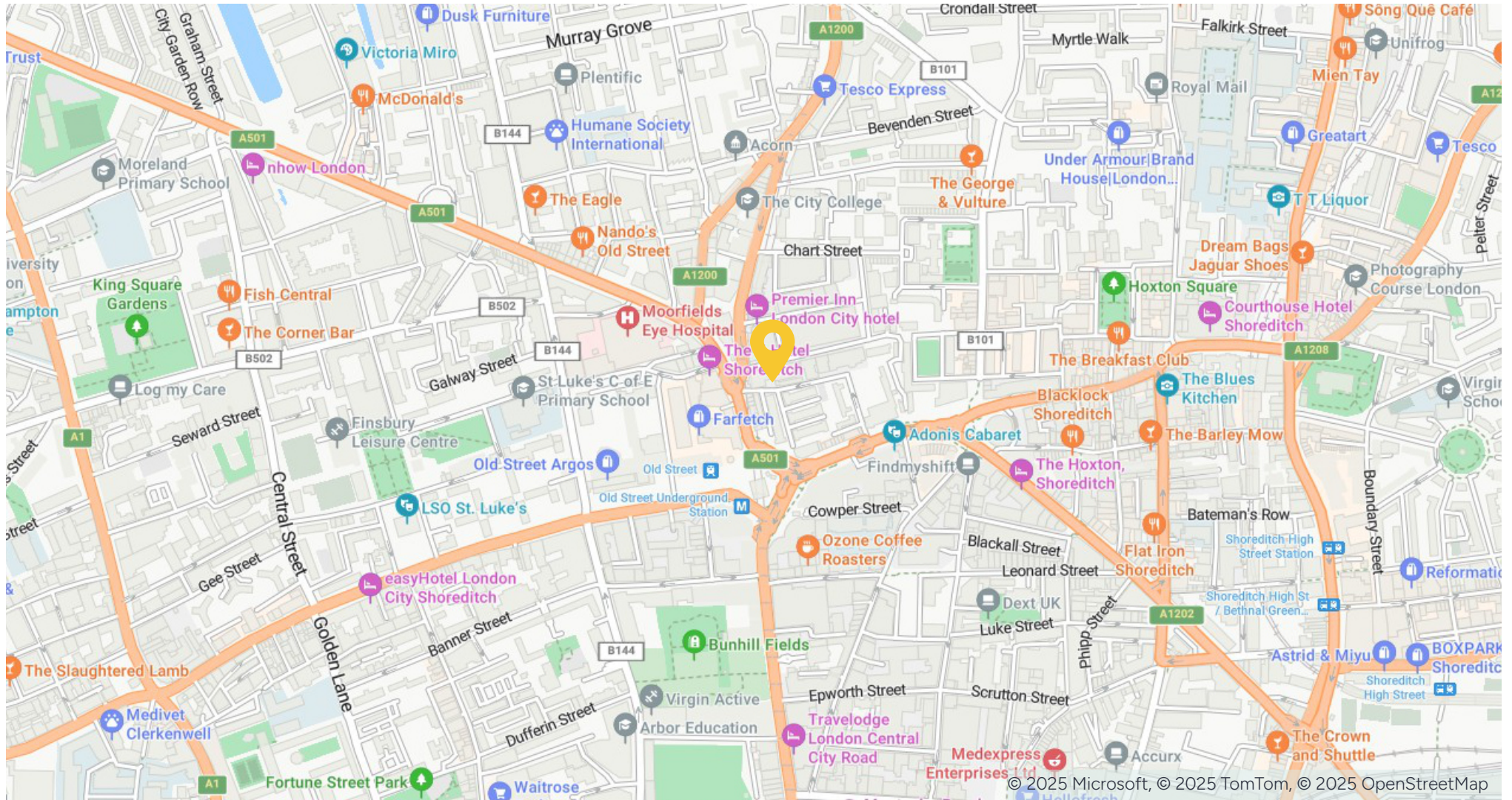


Bike  
Racks





## Location



## Contact us

Viewings by appointment only.

To arrange a viewing, please contact:



**Doug Gordon**

020 7747 3117

[doug.gordon@fishergerman.co.uk](mailto:doug.gordon@fishergerman.co.uk)



**Jessie High**

020 7747 3142

[jessie.high@fishergerman.co.uk](mailto:jessie.high@fishergerman.co.uk)

Please note: Fisher German LLP and its Joint Agents give notice that: 1. They have no authority to make or give any representation or warranty on any property whether on their own behalf or on behalf of their clients or otherwise. 2. They do not owe any duty of care to you and assume no responsibility for any statements, representations, warranties or otherwise made in the particulars and you should not rely on those in the particulars. 3. The particulars are produced in good faith are set out as a general guide only and do not constitute or form an offer or a contract or part thereof. 4. Any photographs, descriptions, plans, measurements, distances and any other details in the particulars are approximate estimates only taken as the property appeared at the time and should not be relied upon as factually accurate. 5. Fisher German assumes prospective purchasers/tenants have carried out inspections to satisfy themselves that the information in the particulars is correct.

Particulars dated July 2025. Photographs dated 2025.



This brochure is fully recyclable