



LOOK AND FEEL DOCUMENT

Job: 1 London Wall  
Job Number: 1667  
Revision: B  
Date: 14.04.25

Prepared by: Nichola Barnor  
Checked by: Ben Minifie

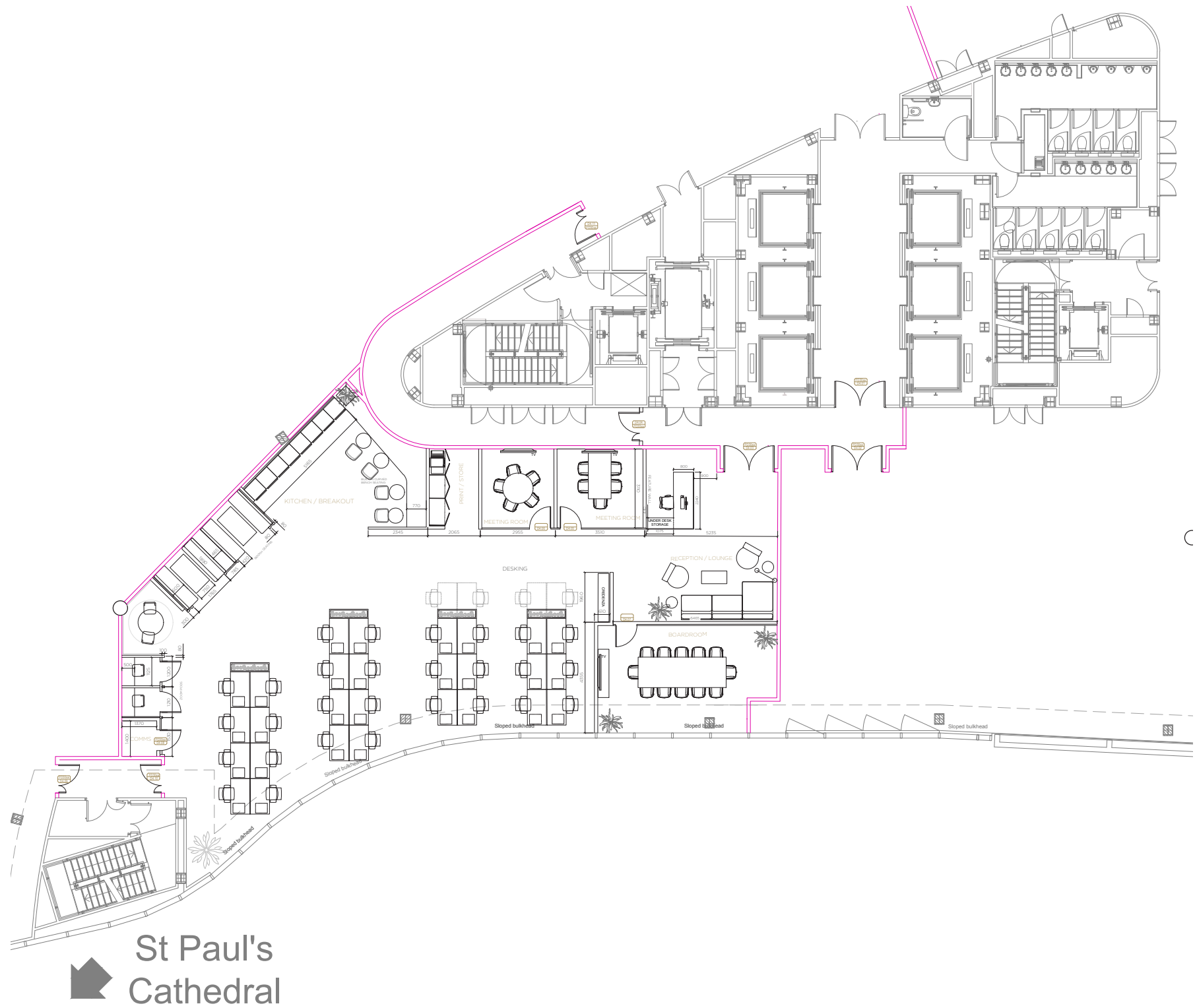
- 1.0 Proposed Layouts
  - > Proposed Fourth Floor Layout
  - > Proposed Fourth Floor RCP
  - > Proposed Fourth Floor Finishes

- 2.0 Proposed Look & Feel
  - > Reception & Reception Lounge Finishes
  - > Proposed Open Plan Finishes
  - > Proposed Kitchen & Breakout Finishes

- 3.0 Visuals
  - > Reception Visuals
  - > Office Visuals
  - > Kitchen Visuals

1.0  
Proposed Layouts

1.1 Proposed Fourth Floor Layout



1.0  
Proposed Layouts

1.2 Proposed Fourth Floor RCP





1.0  
Proposed Layouts

1.3 Proposed Fourth Floor Floor Finishes



1.0  
Proposed Layouts

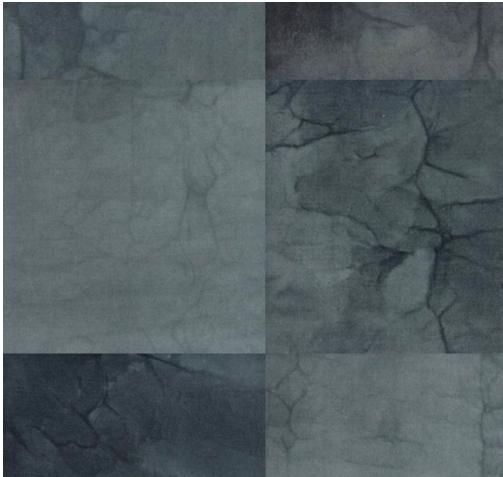
1.4 Proposed Fourth Floor Floor Finishes



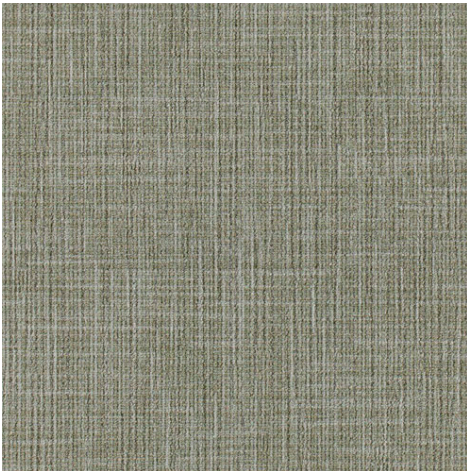
Corkwood / Reception to Breakout



Workspace



Shaw Contract Carpet / Boardroom Inlay



Milliken/ Breakout Booth seating



Milliken Carpet / Meeting Rooms



Shaw Carpet / Stair Lobby



## 2.0 Proposed Look & Feel

### 2.1 Proposed Reception & Lounge Finishes



## 2.0 Proposed Look & Feel

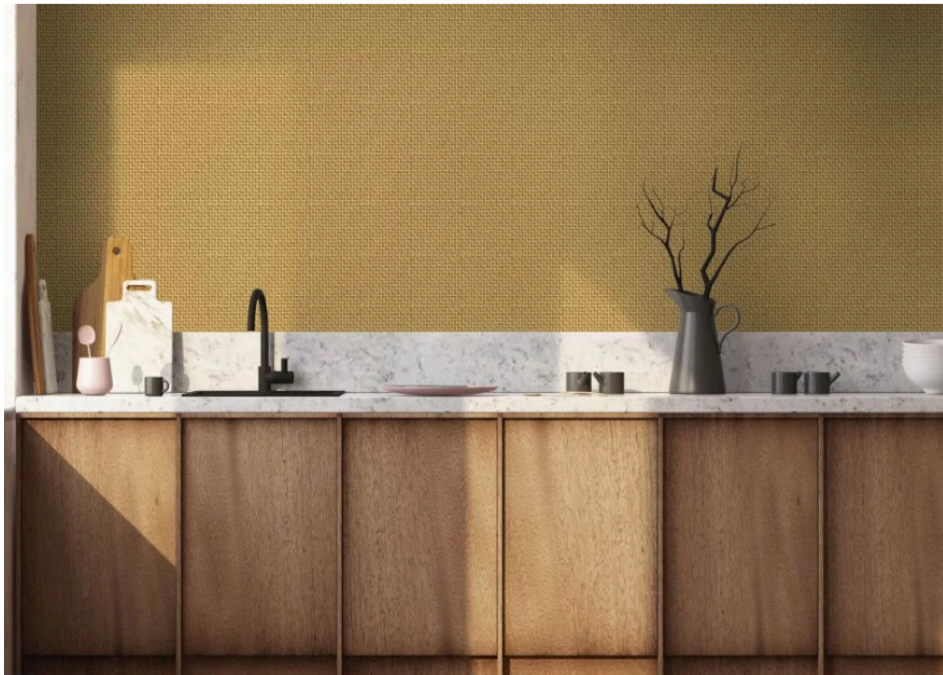
### 2.2 Proposed Open Plan & Meeting Room Finishes





## 2.0 Proposed Look & Feel

### 2.3 Kitchen & Breakout Finishes





2.0  
Proposed Look & Feel

Material Finishes



Kitchen Wall Colour:  
Bauwerks Barleycorn Limewash



Kitchen Corian Counter:  
Savannah Corian



Kitchen Circle Table Corian:  
Peppered Terrazzo corian



Booth Wall Colour:  
Dulux Volcanic Splash 1



Kitchen Bench fabric:  
Kvadrat Clay 0011

## 3.0 Visuals

### 3.1 Reception Visuals opt 1





3.0  
Visuals

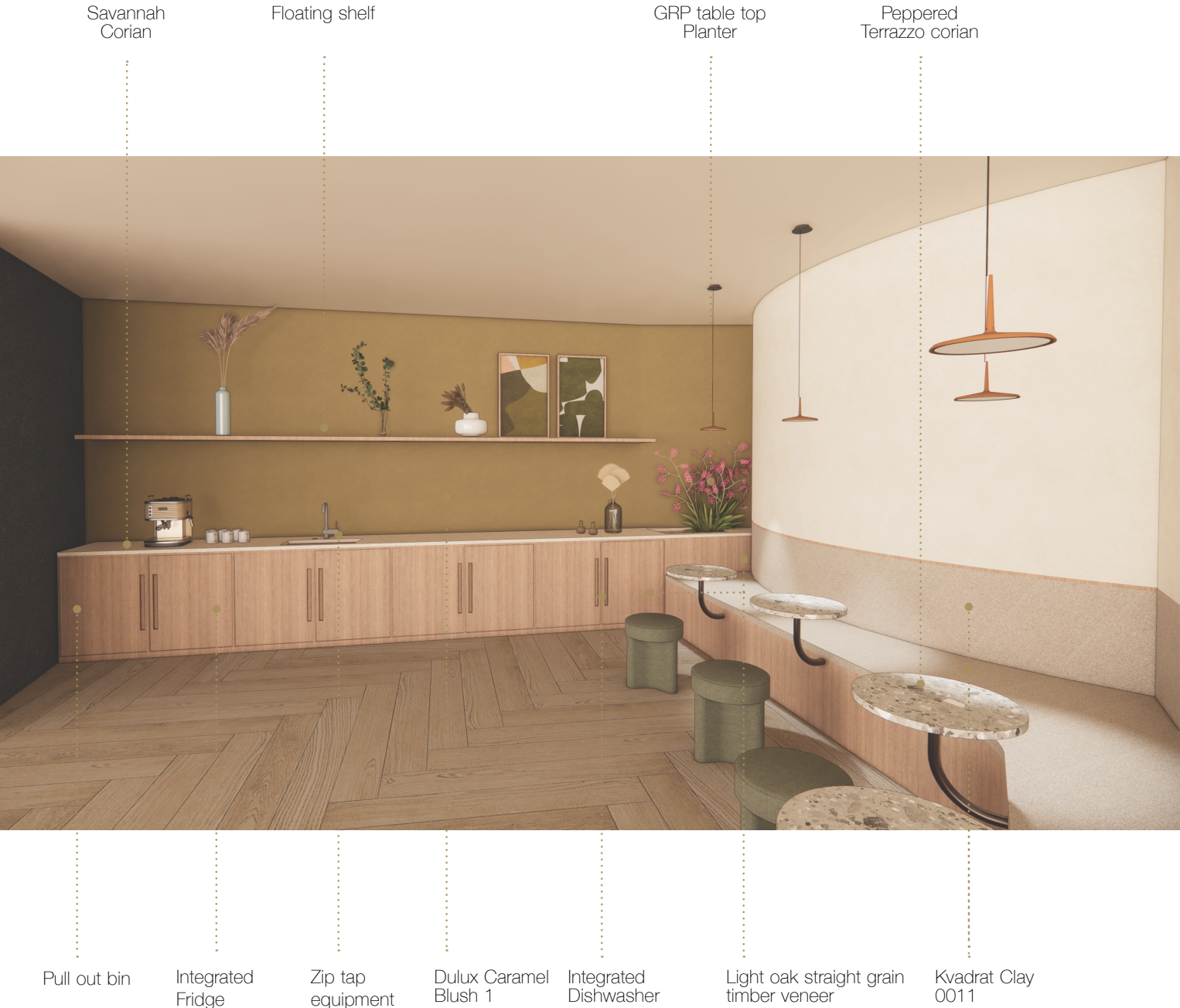
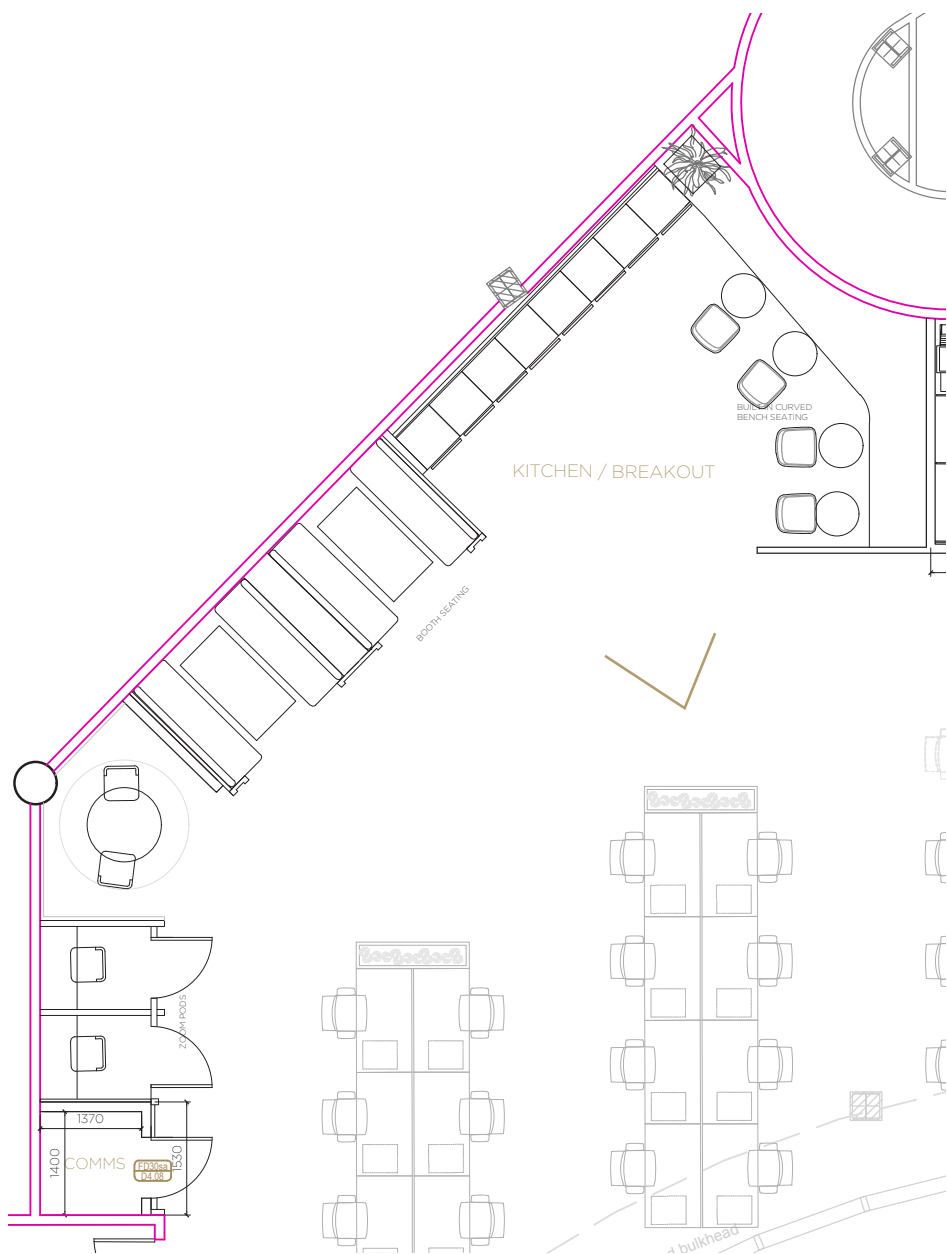
3.3 Kitchen Visuals





3.0  
Visuals

3.3 Kitchen Visuals





### 3.0 Visuals

#### 3.4 Booth Seating



## 3.0 Visuals

### 3.5 Zoom Booth



