

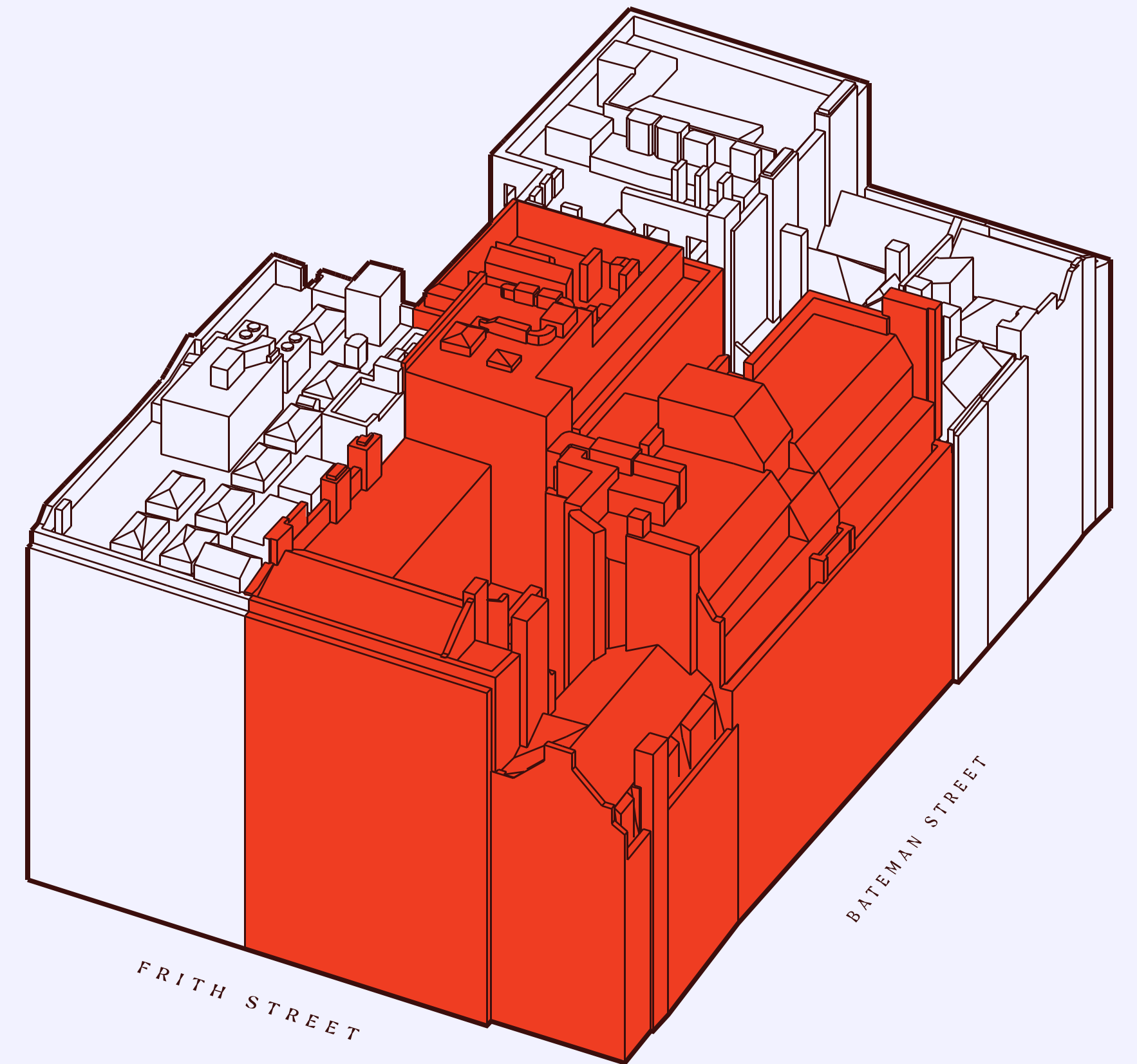
10,000 SQ.FT • 6 UNITS 1,000 TO 3,000 SQ. FT. • FULLY FITTED

BA + EMAN FRITH

53 FRITH STREET, SOHO LONDON W1



LOCATION



OVERVIEW

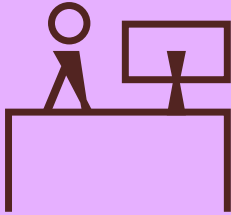
Discover fully furnished suites ranging from 1,000 to 3,000 sq. ft. in the vibrant epicenter of Soho.

AVAILABILITY

All available on conventional or managed leases

FLOOR	UNIT	SQ.FT.	SQ.M.
Fourth	Frith	1,021	95
Third	Frith	978	91
Third	Bateman	2,607	242
Second	Frith	1,309	122
Second	Bateman	2,959	275
First	Frith	1,260	117
Total		10,134	941


SPECIFICATION



Manned reception



Warehouse heritage building



Fully fitted suites




Contemporary refurbishment throughout



Exposed air conditioning



New WCs



Fibre connectivity available



Cycle storage / Showers / Lockers

MANAGED SERVICES INCLUDE



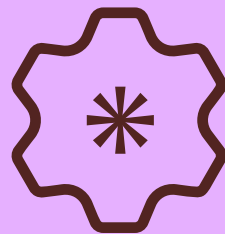
Dedicated Account Management

Our central customer service team is here to support every aspect of your office occupation. A single point of contact will organise all your property, facilities & service requirements.



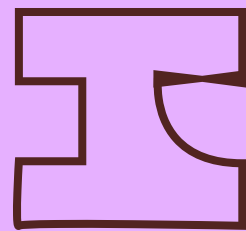
Fully Fitted + Furnished

The workspace is fully fitted & furnished with a range of different areas to work, meet & relax. All passes & keys are included and your name can be displayed on the reception signboard.



Enterprise Bandwidth & IT Support

A G.Network supply of ultra-fast fibre optic internet, 200MB to 1GB as standard, fully resilient back-up, secure wireless environment, IT support included. Specialist upgrades & telephony services available on request.



Interior Design+ Space Planning

Every occupier receives a complimentary consultation from our in-house design team. Whilst the space is already fitted, we will ensure you get the most from your space.



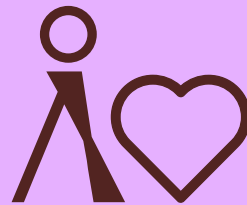
Inclusive of all Property Costs

Included in your single monthly fee will be rent, business rates, service charge, utilities (electricity, water rates, heating & lighting) & building insurance - all the traditional property overheads.



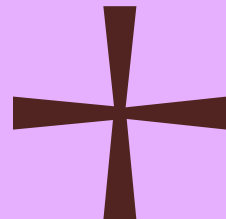
Full Facilities Management

In addition, the management of your space is included: cleaning, repairs & maintenance, compliance, health & safety, client consumables including teas, coffees & milk (subject to our fair use policy).



Customer-Focused Occupation

We lower your barriers to occupation by providing an industry-standard Office Occupation Agreement, no onerous long lease, with lead times to occupy reduced to days not months, if need be.

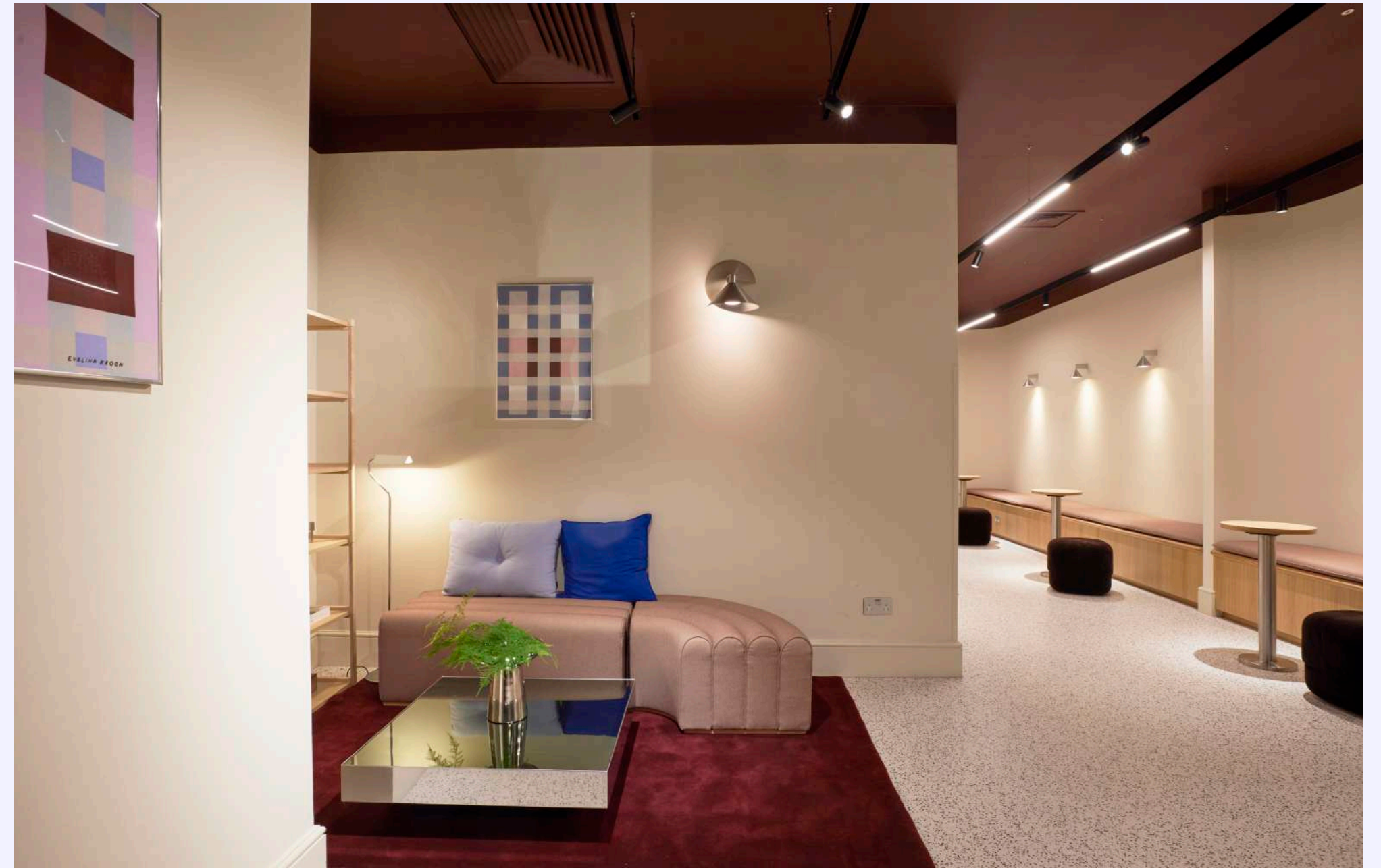


Additional Services

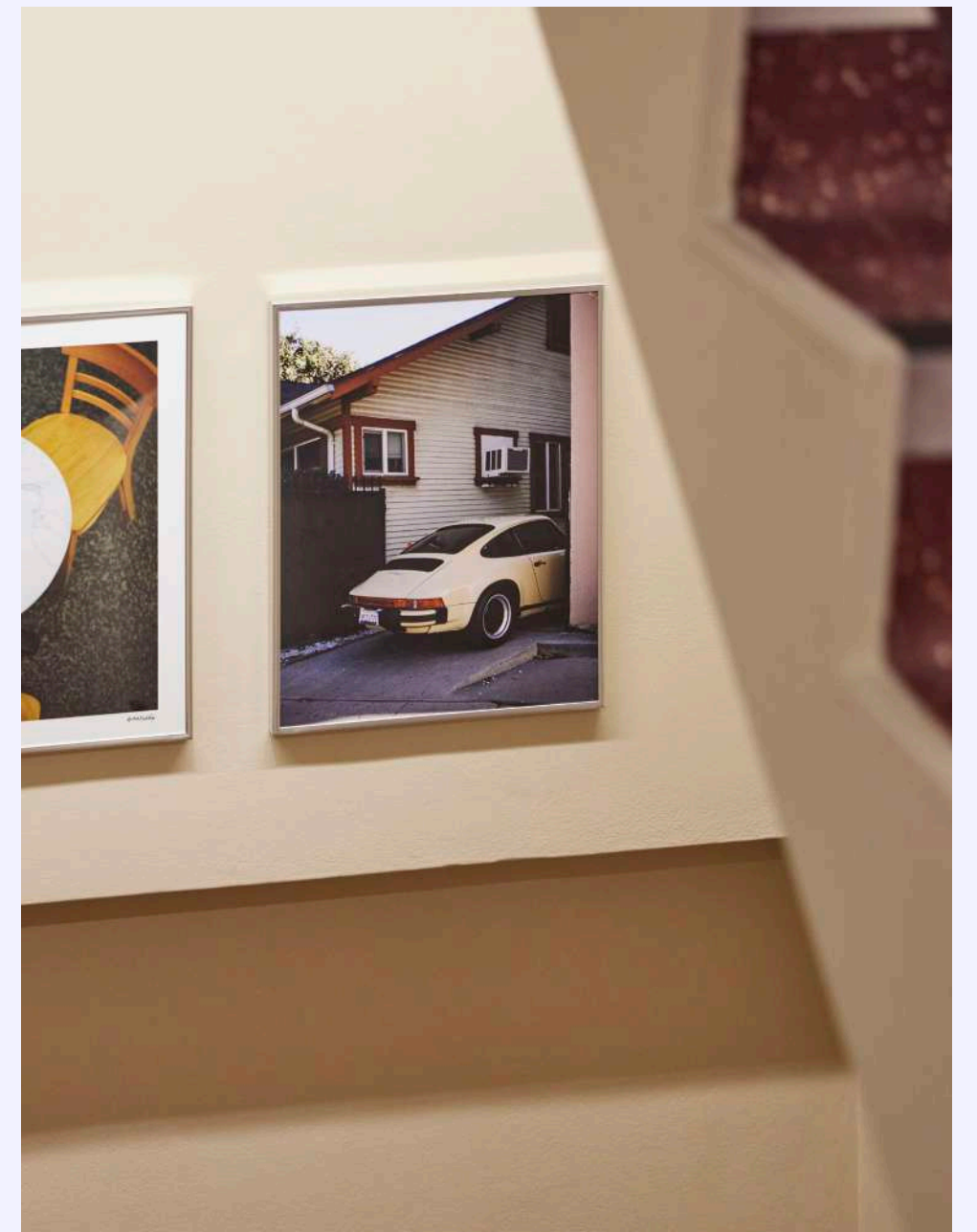
In addition to all these inclusive features, we offer a range of additional, on-demand services, covering meeting & events, technology, end-of-journey, workspace personalisation & business support.



FRITH + BATEMAN	
4	Molinare TV & Film
3	
2	Evolve OOH Ltd
1	ROAST Kitty
G	
LG	Bike Storage Showers + Lockers



FRITH + BATEMAN	
4	Molinare TV & Film
3	
2	Evolve OOH Ltd
1	ROAST Kitty
G	
LG	Bike Storage Showers + Lockers



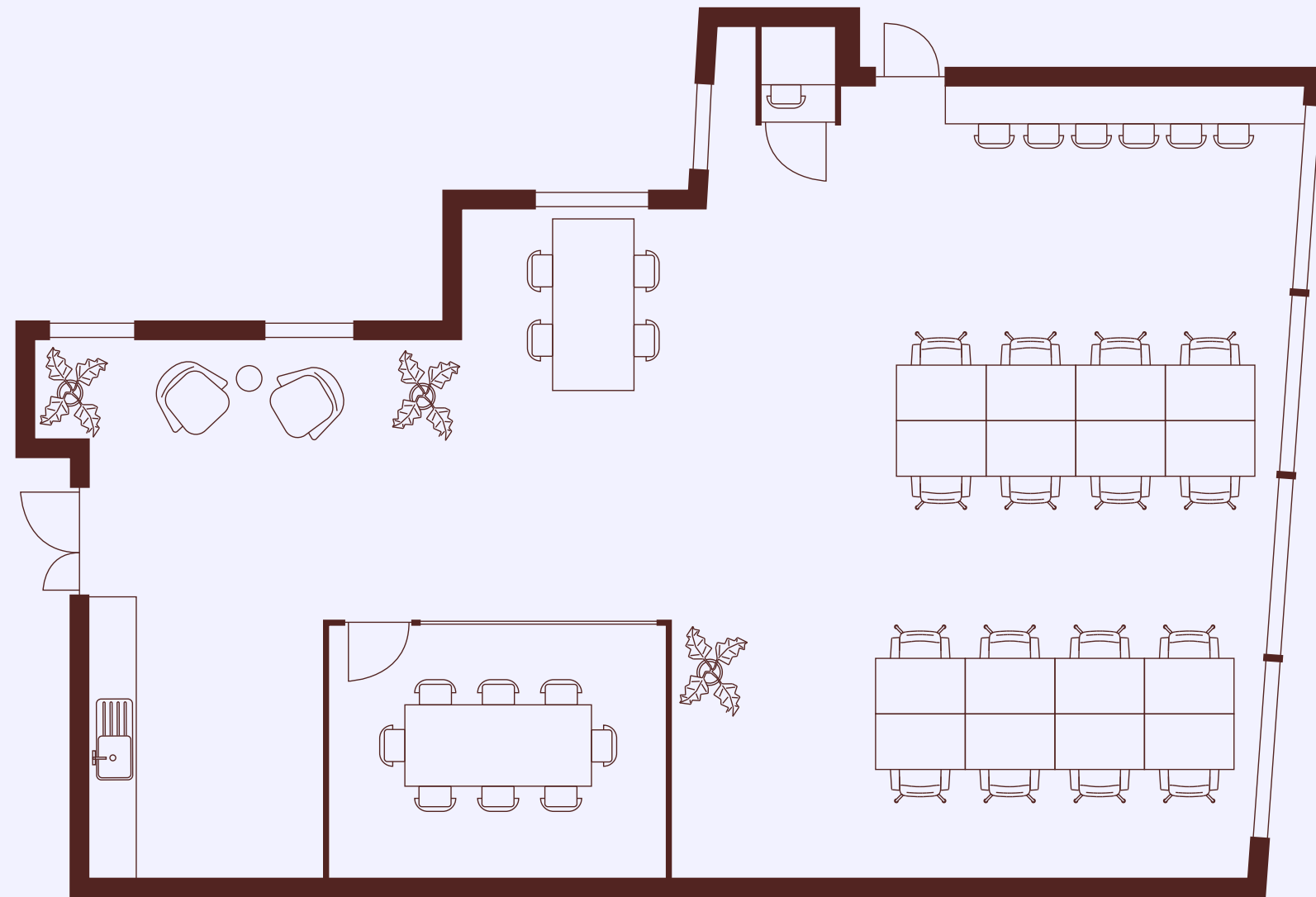
FRITH + BATEMAN

AVAILABLE SPACES

SPACES

FIRST FLOOR

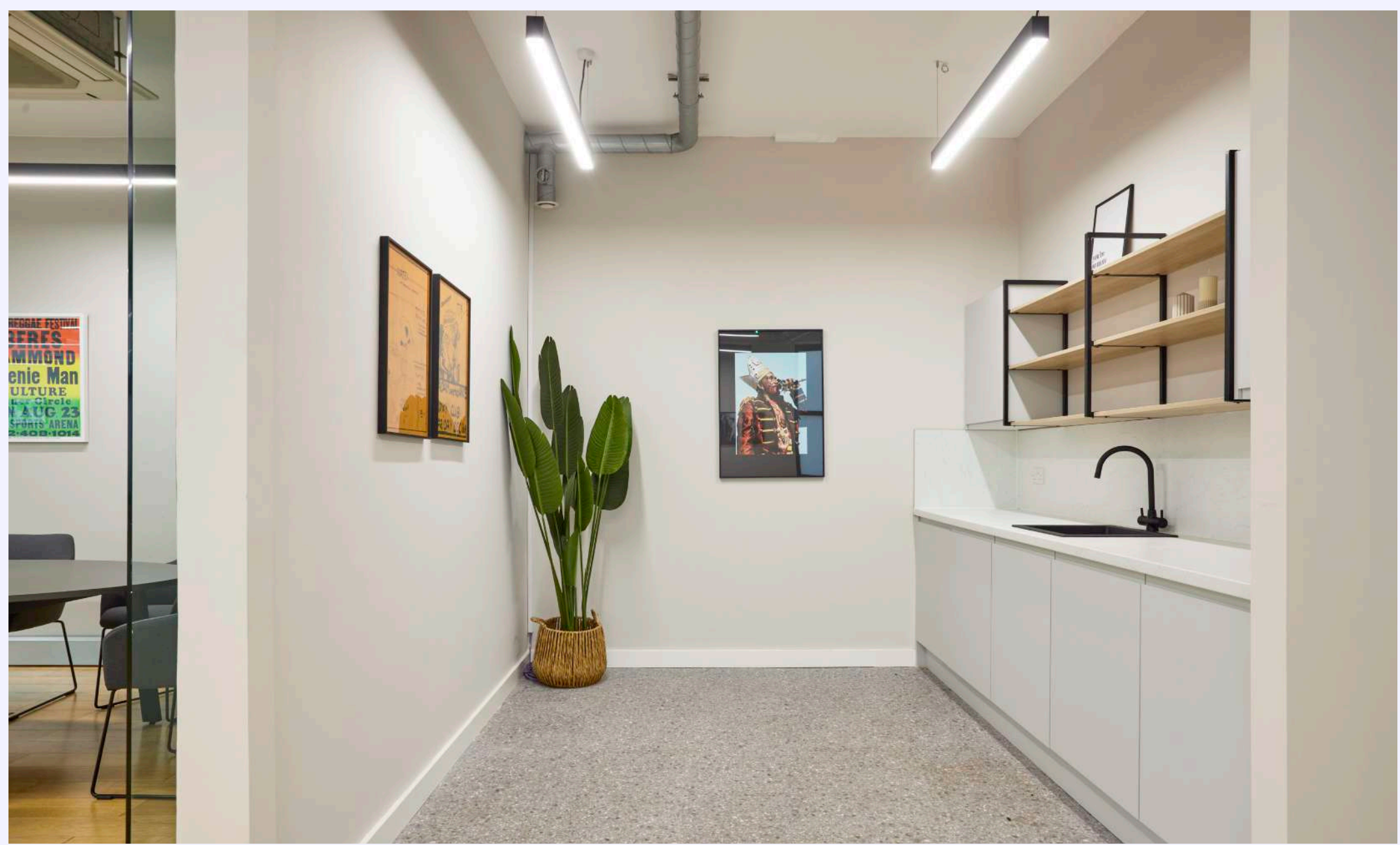
FRITH SUITE 1,260 SQ.FT.



FITOUT SPEC

- x1 meeting room (6 persons)
- x16 desks
- x1 meeting table (4 persons)
- x1 phone booth
- Break out area
- Fully operational kitchen
- LED lighting
- Air Conditioning
- Laptop work bench





SECOND FLOOR

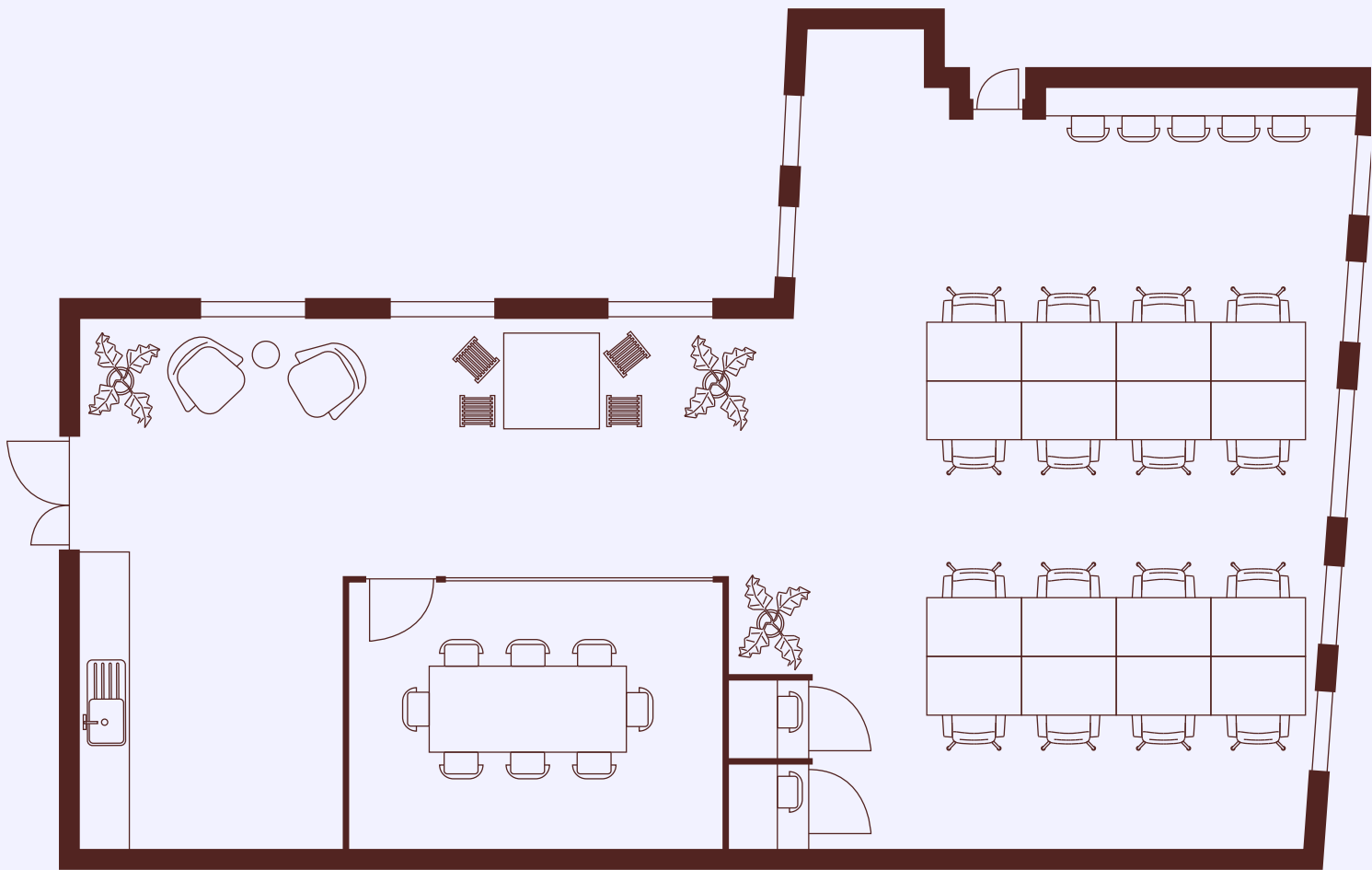
BATEMAN SUITE 2,959 SQ.FT.



FITOUT SPEC

- x1 Boardroom (10 persons)
- x1 Meeting room (6 persons)
- x1 Meeting room (4 persons)
- x32 Desks
- x1 Breakout table (10 persons)
- x3 Phone booths
- Reception lobby
- Break out area
- Laptop work bench
- Fully operational kitchen
- LED lighting
- Air Conditioning

FRITH SUITE 1,309 SQ.FT.

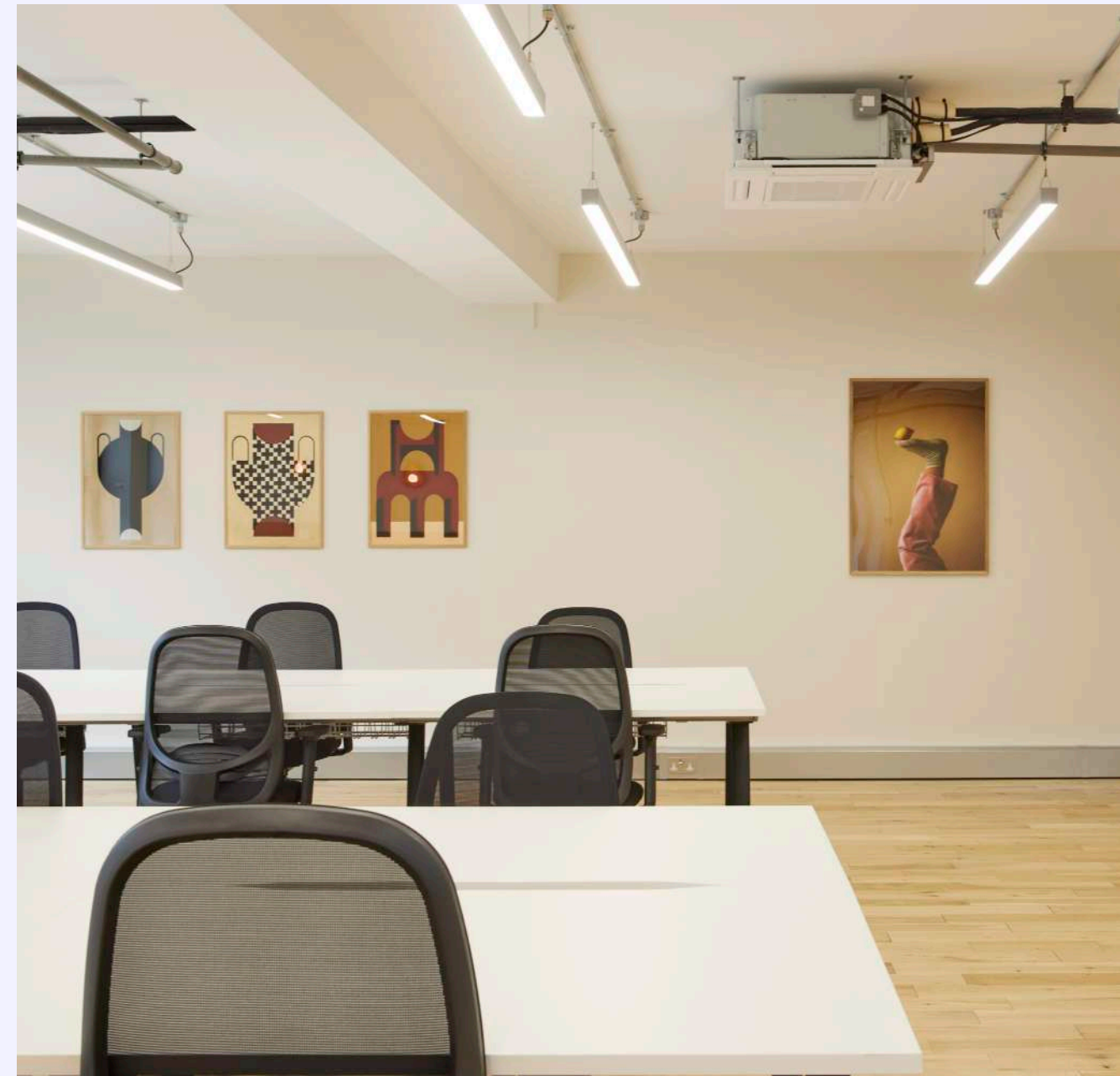


FITOUT SPEC

- x1 meeting room (8 persons)
- x16 desks
- x1 meeting table (4 persons)
- x2 phone booth
- Break out area
- Fully operational kitchen
- LED lighting
- Air Conditioning
- Laptop work bench

*Available in Q4 2025.





THIRD FLOOR

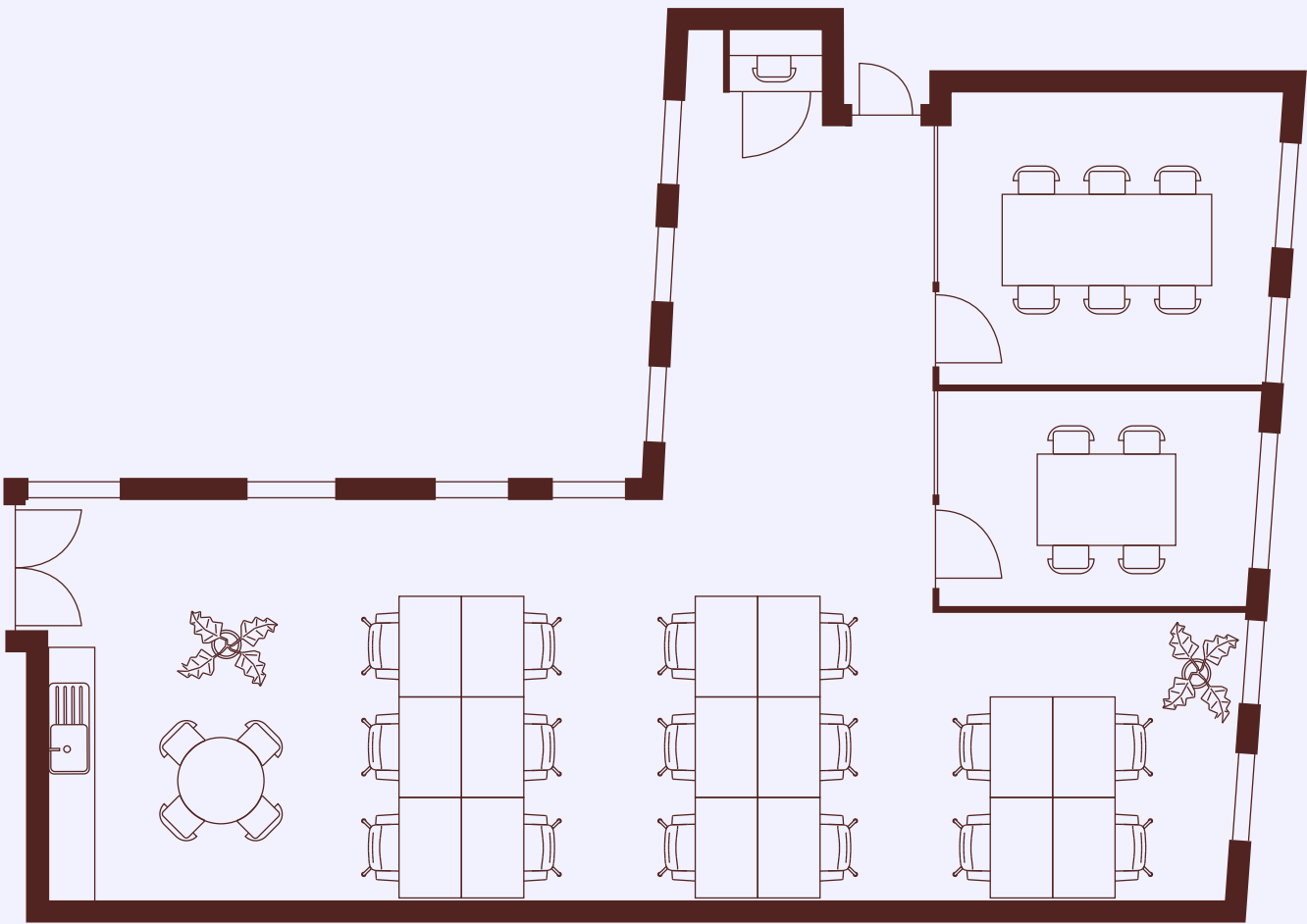
BATEMAN SUITE 2,607 SQ.FT.



FITOUT SPEC

- x1 Meeting room (6 persons)
- x2 Meeting room (4 persons)
- x28 Desks
- x1 Breakout table (10 persons)
- x2 Phone booth
- Reception lobby
- Break out area
- Laptop work bench
- Fully operational kitchen
- LED lighting
- Air Conditioning
- IT server room/storage room

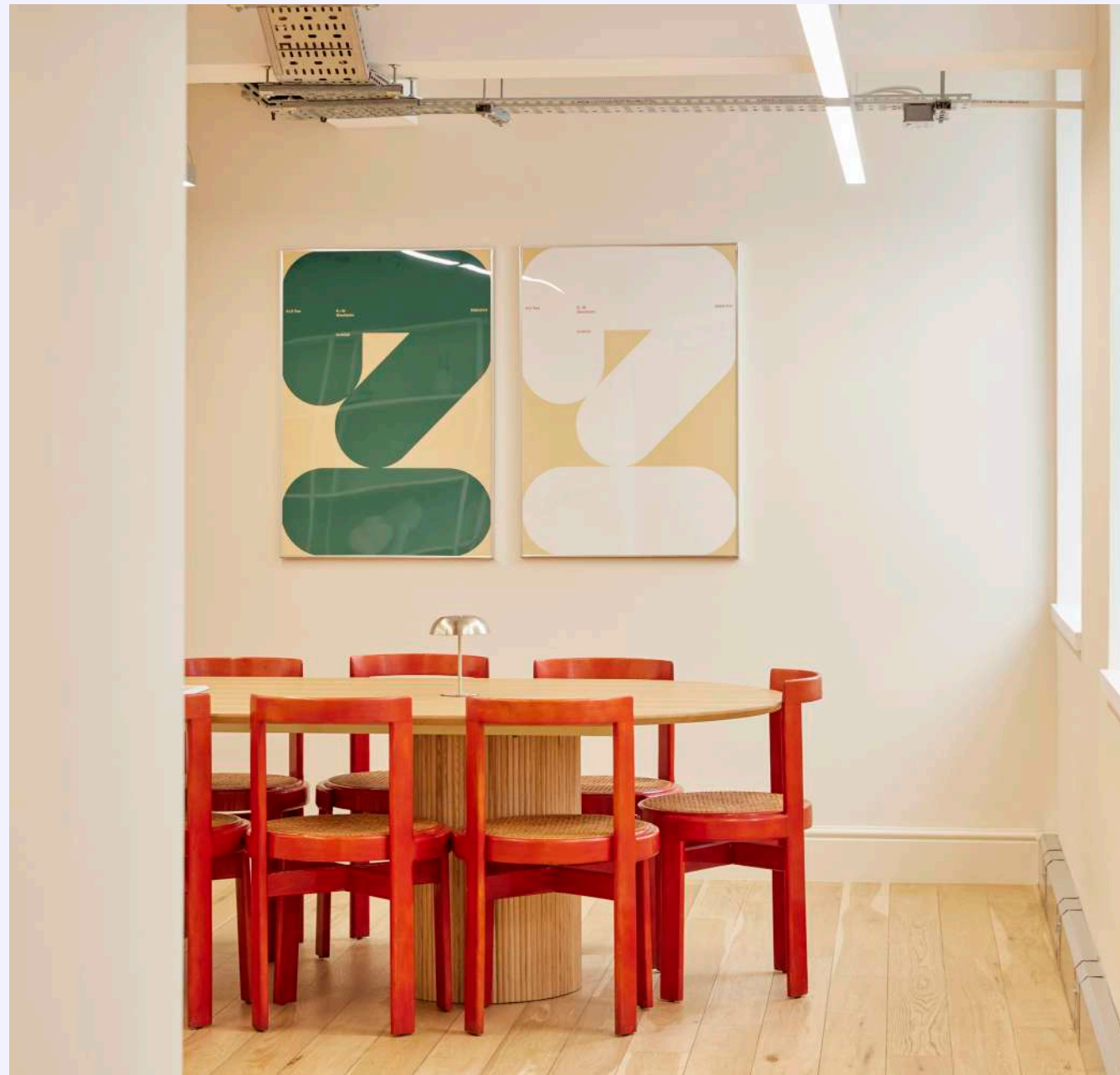
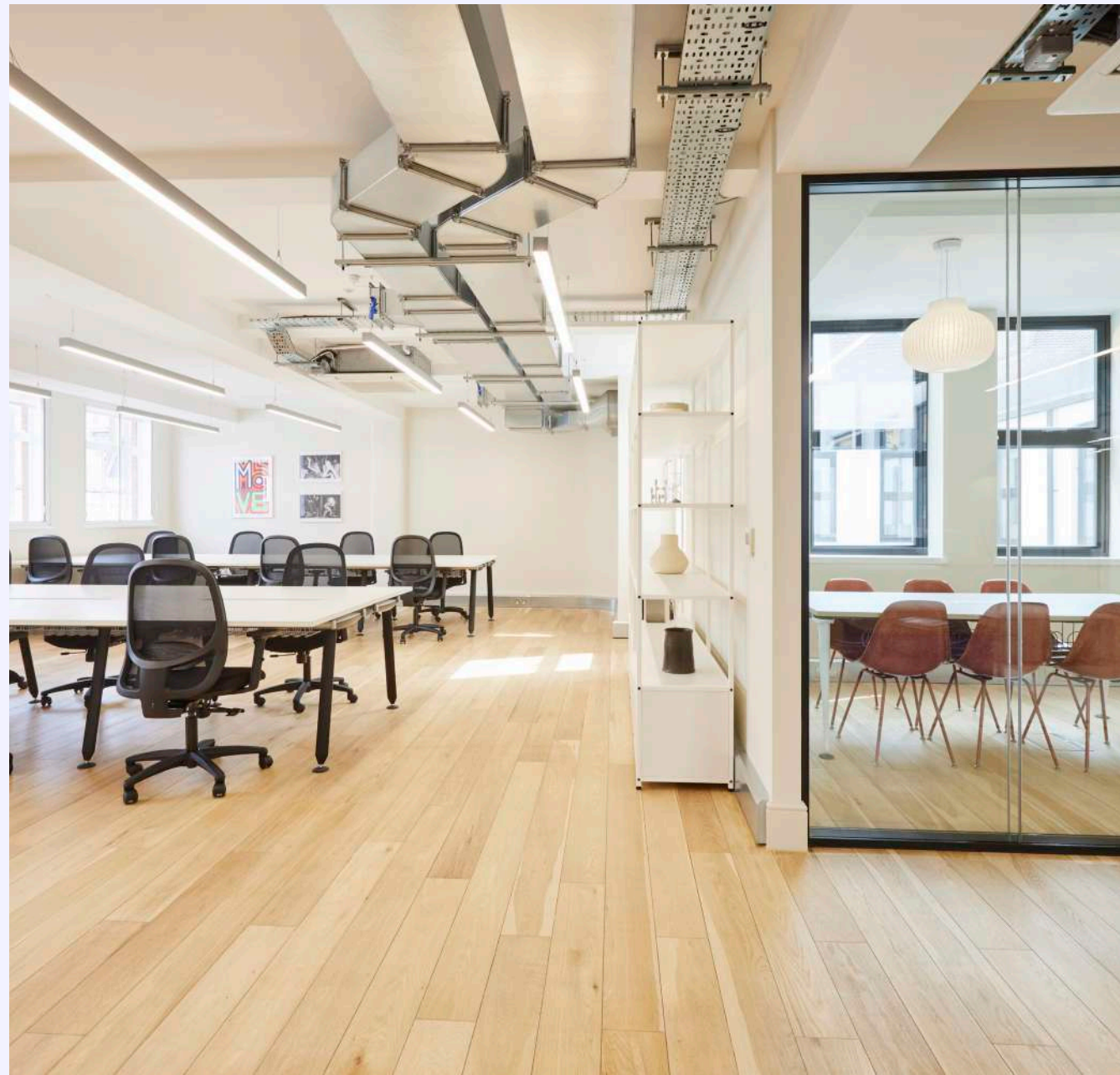
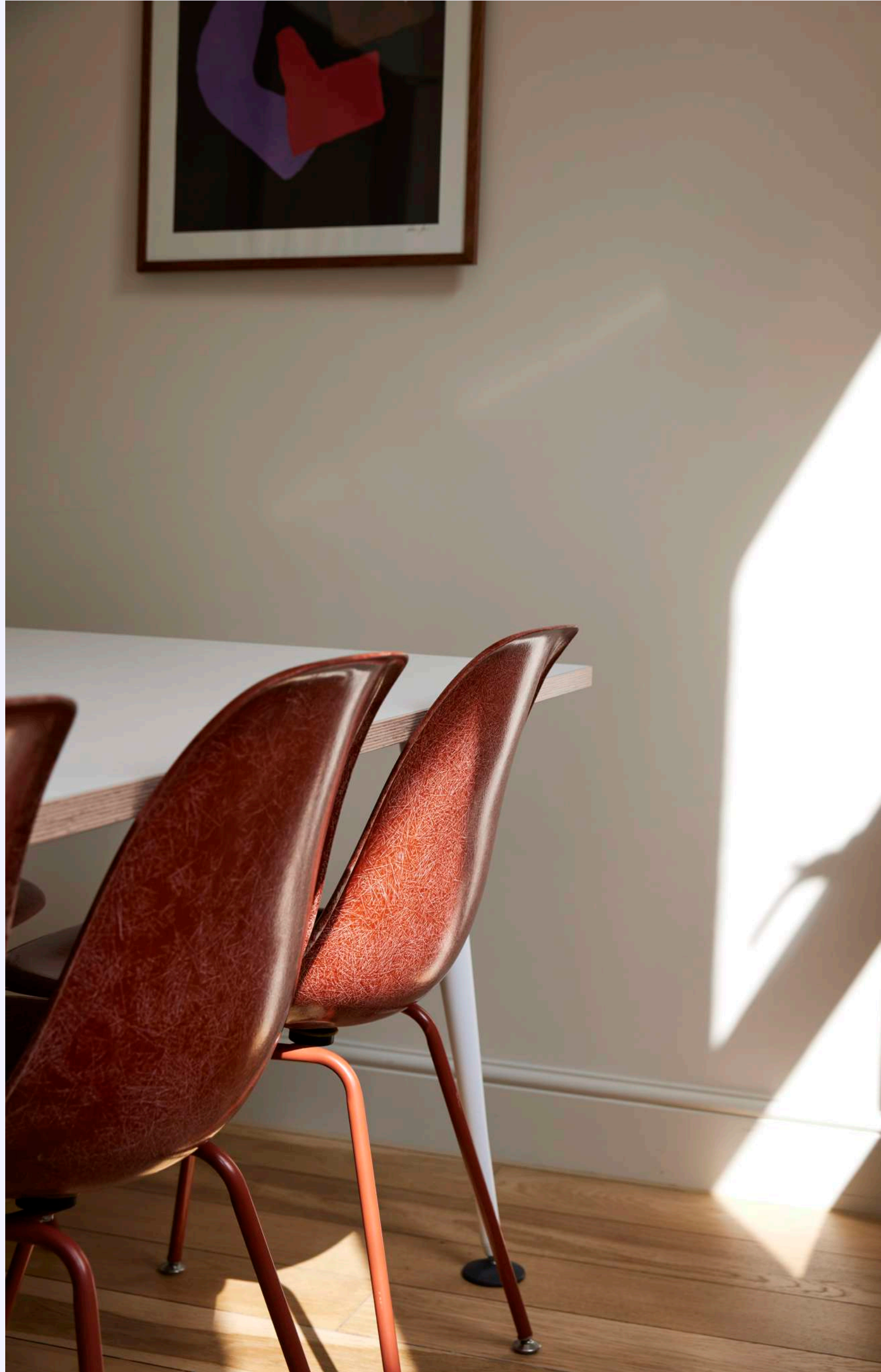
FRITH SUITE 978 SQ.FT.



FITOUT SPEC

- x1 meeting room (6 persons)
- x1 meeting room (4 persons)
- x16 desks
- x1 phone booth
- Break out area
- Fully operational kitchen
- LED lighting
- Air Conditioning

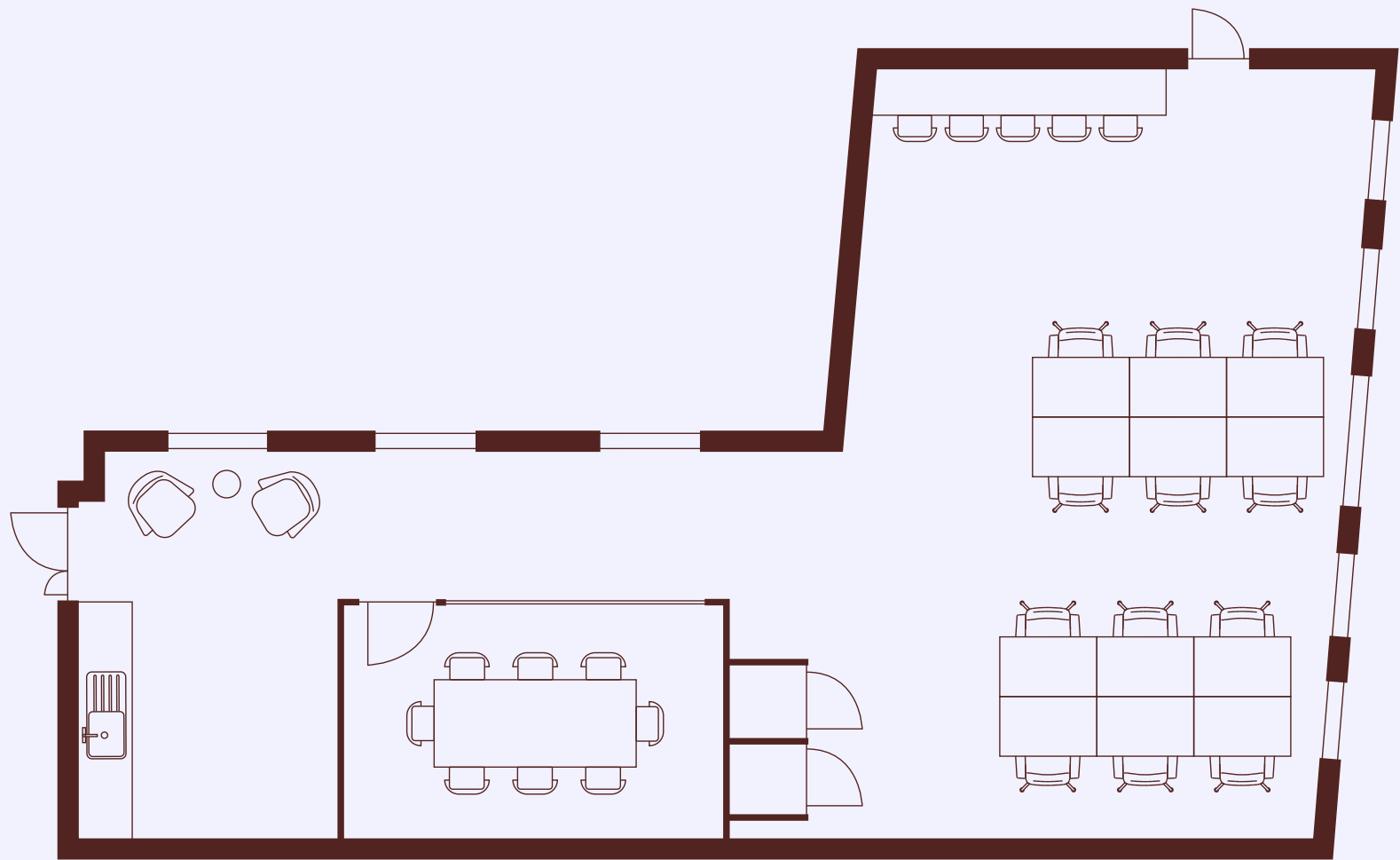






FOURTH FLOOR

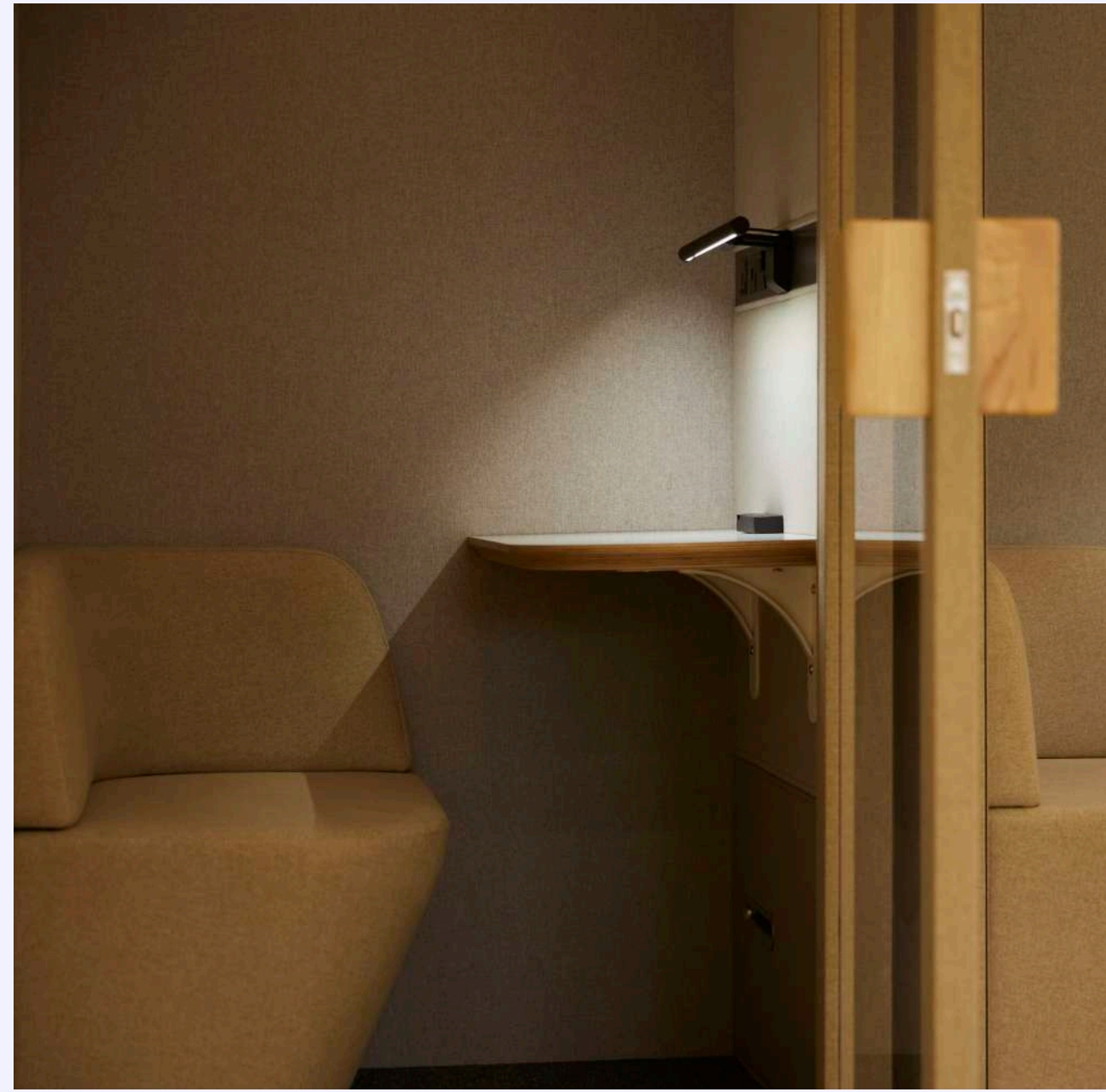
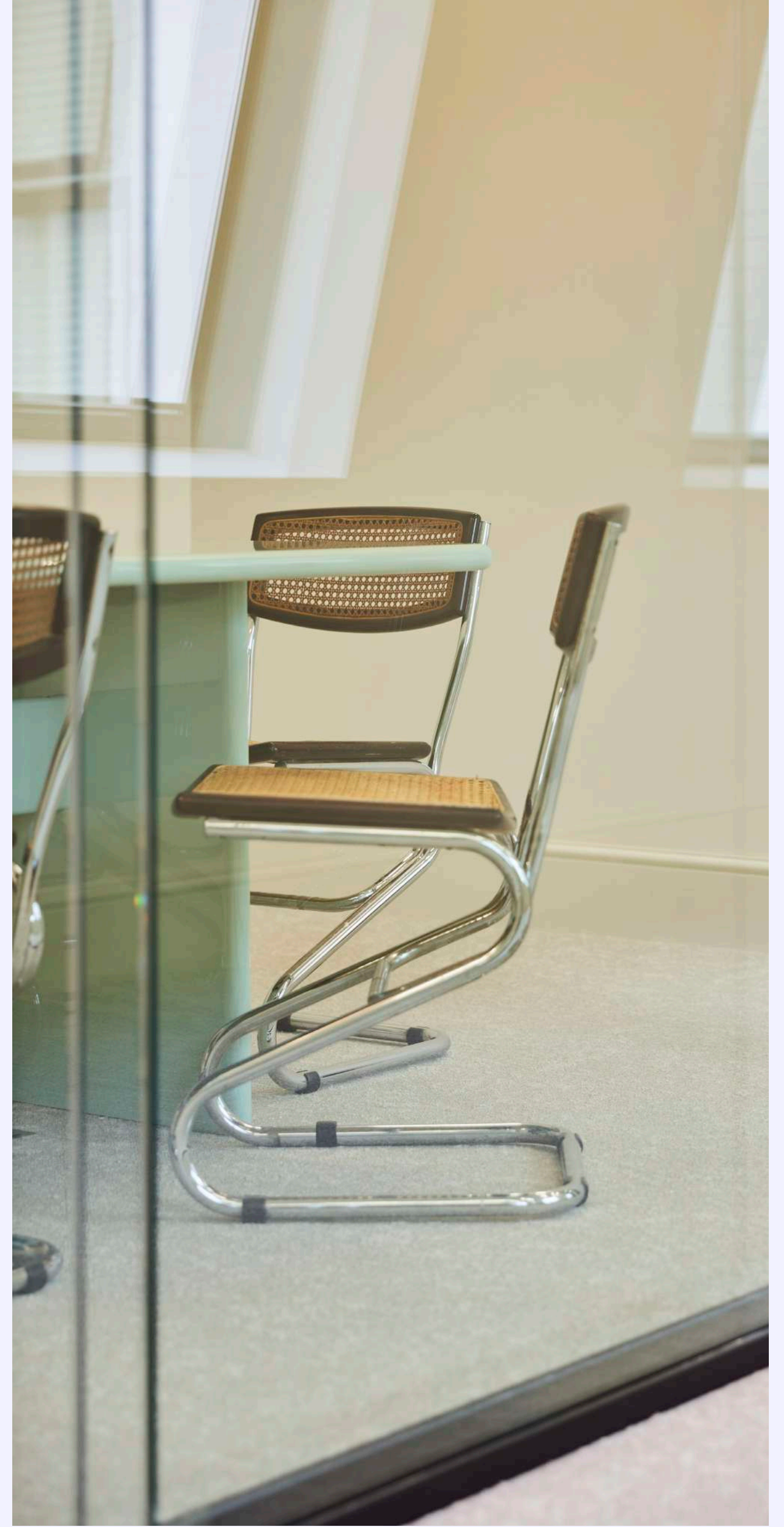
FRITH SUITE 1,021 SQ.FT.



FITOUT SPEC

- x1 meeting room (8 persons)
- x12 desks
- x2 phone booth
- Break out area
- Laptop work bench
- Fully operational kitchen
- LED lighting
- Air Conditioning





SHOW







THE DEVELOPER

Global Holdings Management Group UK.

An international alliance of real estate management and investment advisory companies operating across the US, UK, and Europe. They exclusively develop, advise and manage their residential, commercial and hotel portfolios, overseeing over 10 million square feet of real estate, including 120 properties and 2,500 hotel rooms.

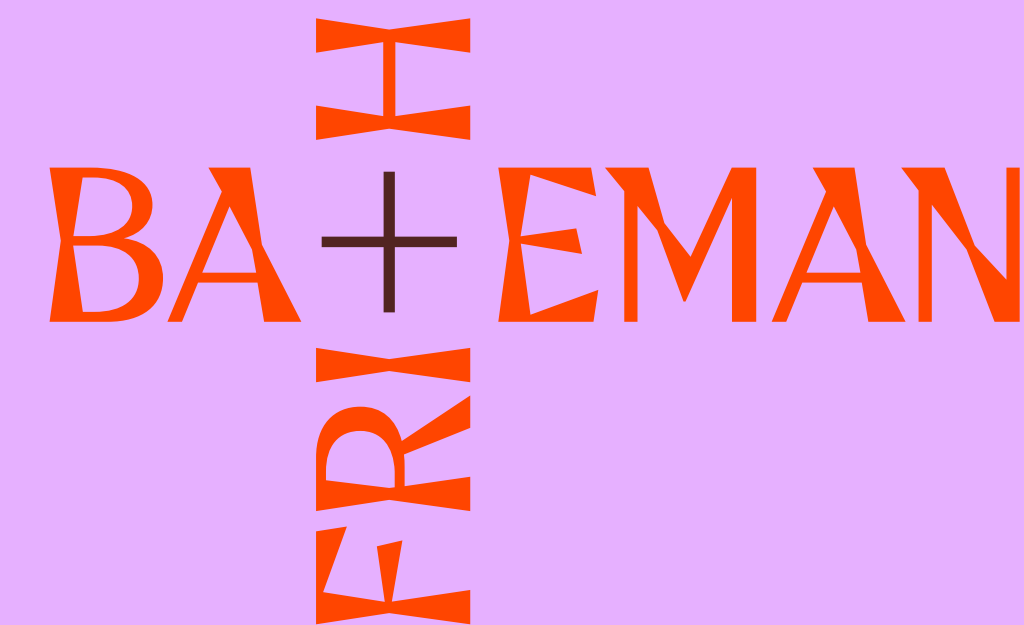
LONDON OFFICE PORTFOLIO

The group's London office portfolio features landmark properties like Sea Containers and Medius, and works with a diverse range of clients from tech to luxury brands, including Ogilvy, Bumble and Alfred Dunhill.

The portfolio is managed in house ensuring all customers benefit from a direct contact, speedy response times and a best in class management service.



CONTACT



Joe Fuller

joe@bluebooklondon.co.uk

07803 937 733

Tor Cuming

tor@bluebooklondon.co.uk

07714 089 823

Chris Watkin

chris@bluebooklondon.co.uk

07730 066 523

BLUEBOOK



Misrepresentation Act 1967 Bluebook for themselves and for the lessors of this property whose agents they are give notice that: (1) The particulars are set out as a general outline only for the guidance of intending lessees, and do not constitute part of, an offer or contract; (2) all descriptions, dimensions, references to condition and necessary permissions for use and occupation, and other details are given in good faith and are believed to be correct, but any intending tenants should not rely on them as statements or representations of fact but satisfy themselves by inspection or otherwise as to the correctness of each of them; (3) no person in the employment of Bluebook has any authority to make or give representation or warranty whatever in relation to this property. February 2025.