

Lambert
Smith
Hampton



Buckmore Park

Buckmore Farm Road, Petersfield GU32 3FW

TO LET/FOR SALE

A Brand New Sustainable Self Contained
Industrial Unit

12,303 sq.ft / 1,143 sq.m.

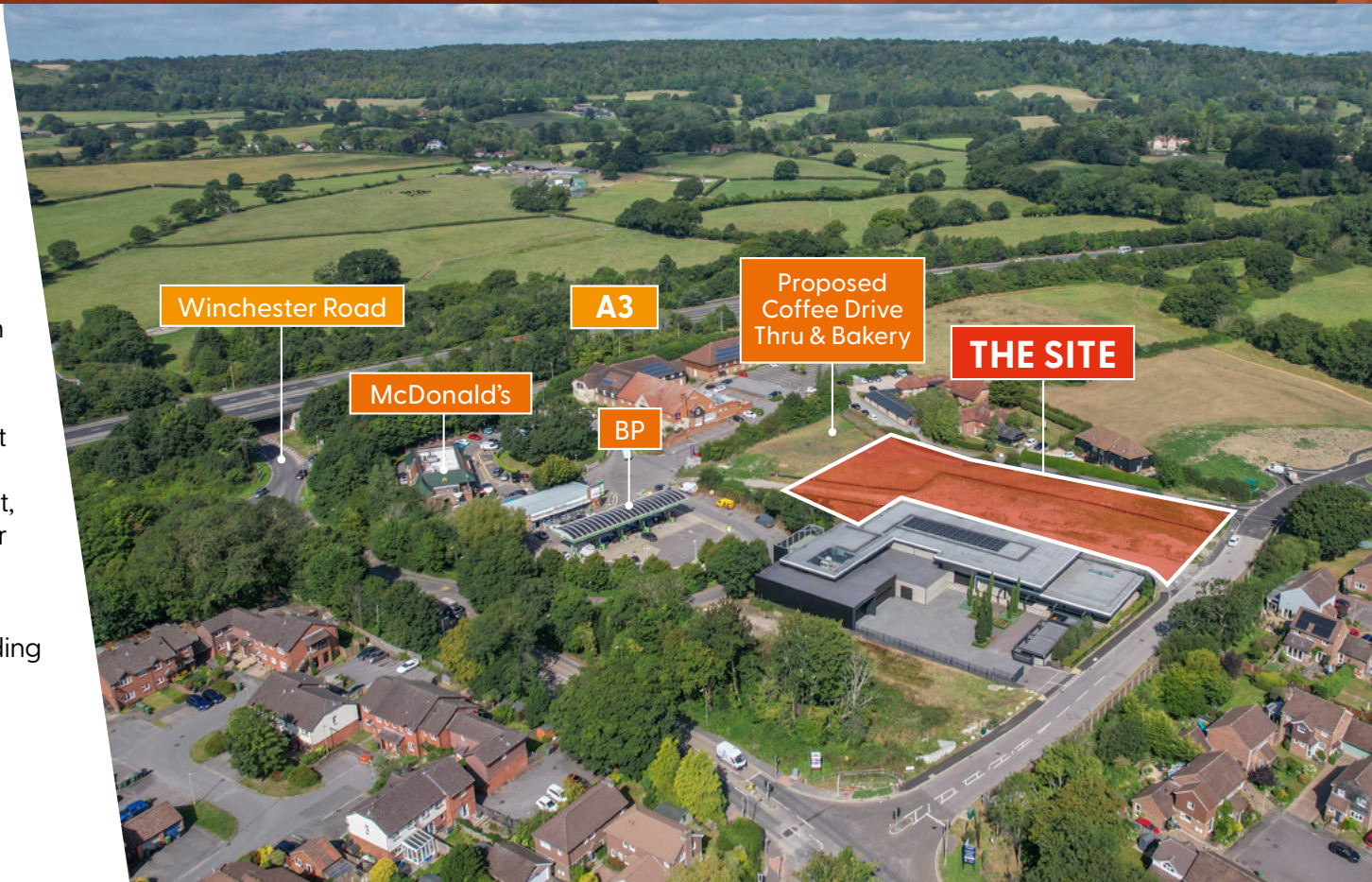
Available Q4 2026



A development by
 GENTIAN

The Opportunity

- Excellent road communications
- Located within proximity of the A3 and A272 to Guildford, London and the central south coast region
- Consent has been granted under planning application SDNP/24/00612/FUL for the development of an industrial building with consent granted for **Class - E(g) (i) Offices, (ii) Research and development, (iii) Light industry, B2 General industrial, B8 Storage or distribution.**
 - 1 self-contained unit with secure yard
 - North of Petersfield Services with occupiers including a BP Garage and a McDonald's Drive Thru
 - Adjacent to the proposed coffee drive thru and bakery
- Anticipated delivery Q4 2026



Specification

The outline specification of the proposed development is as follows:



Large self contained secure yard



Roller shutter



Maximum ridge of 8.25m with a maximum eave's height of 7m



Bike shed



Floor loading minimum 35kn



Capacity for PV's on roof



Close proximity to amenity



Roof lights

BREEAM Targeted BREEAM "Excellent"



High quality office fit out



20 parking spaces. Equates to 1 space per 57 sq m



Glazed atrium entrance



Schedule of Accommodation

	Total Sq M	Total Sq Ft
GROUND FLOOR	873	9,397
MEZZANINE STORAGE	270	2,906
TOTAL GIA	1,143	12,303

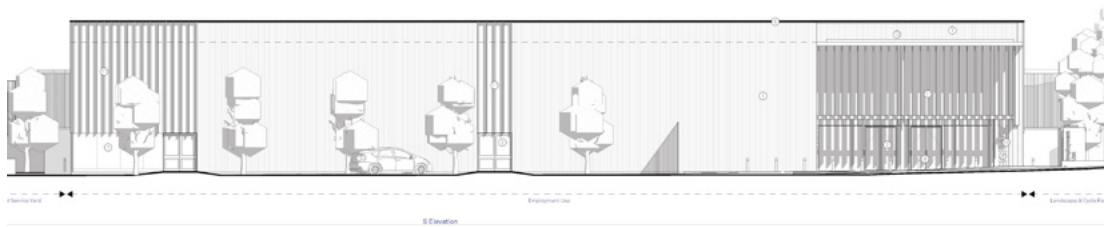
Indicative CGI



Indicative CGI



Elevations



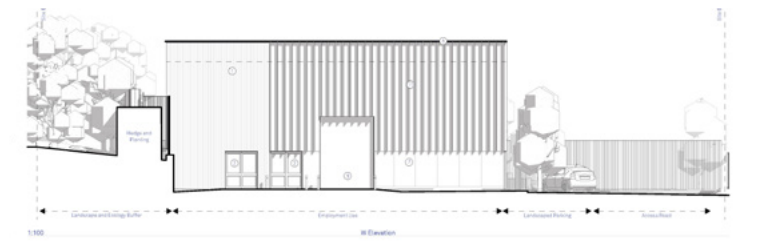
South Elevation



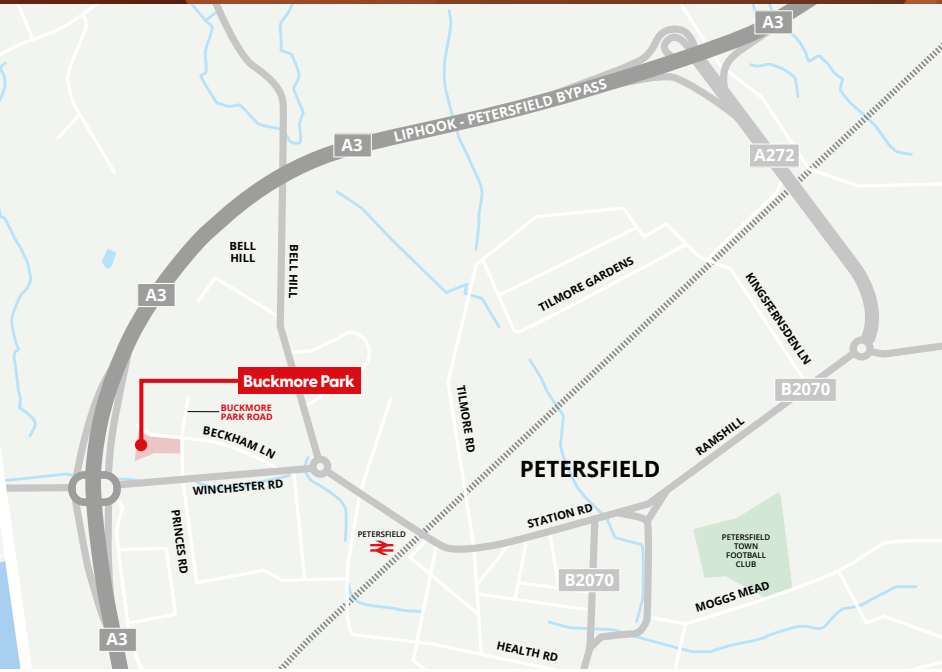
North Elevation



East Elevation



West Elevation



Location

The site is situated on the larger Buckmore Farm Estate to the north-west of Petersfield town centre and current industrial estates and east of the A3 and north of Winchester Road.

The site benefits from excellent road communications from the A3 and A272 to Guildford, London and the central south coast region. It is north of Petersfield Services with occupiers including a BP Garage and a McDonald’s Drive Thru. The site is within very close proximity to Petersfield Railway Station.

Distances

M27	15 miles	17 mins
Portsmouth	18 miles	24 mins
M3 Jct 9	19 miles	30 mins
Guildford	27 miles	38 mins
Southampton	30 miles	45 mins
Central London	57 miles	1 hr 40 mins

Terms

The premises are available on either a freehold or leasehold basis for terms to be agreed. Further details available on request.

Contacts

For further information or to arrange an inspection please contact the following:

Luke Mort
lmort@lsh.co.uk
0759 138 4236

Dan Rawlings
drawlings@lsh.co.uk
07702 809 192

Elise Evans
eevans@lsh.co.uk
07703 393120

Alex Gauntlett
agauntlett@vailwilliams.com
07584 657 826

Russell Mogridge
rmogridge@vailwilliams.com
07815 737 175

© Lambert Smith Hampton. Details of Lambert Smith Hampton (LSH) can be viewed on our website www.lsh.co.uk. This document is for general informative purposes only. The information in it is believed to be correct, but no express or implied representation or warranty is made by LSH as to its accuracy or completeness, and the opinions in it constitute our judgement as of this date but are subject to change. Reliance should not be placed upon the information, forecasts and opinions for any the purpose, and no responsibility or liability, whether in negligence or otherwise, is accepted by LSH or by any of its directors, officers, employees, agents or representatives for any loss arising from any use of this document or its contents or otherwise arising in connection with this document. All rights reserved. No part of this document may be transmitted or reproduced in any material form by any means, electronic, recording, mechanical, photocopying or otherwise, or stored in any information storage or retrieval system of any nature, without the prior written permission of the copyright holder, except in accordance with the provisions of the Copyright Designs and Patents Act 1988. Warning: the doing of an unauthorised act in relation to a copyright work may result in both a civil claim for damages and criminal prosecution. November 2024. Designed and produced by Creativeworld T: 01282 858200

