

Elevate your business on the 8th Floor
in the last remaining suite

LS1

MINERVA

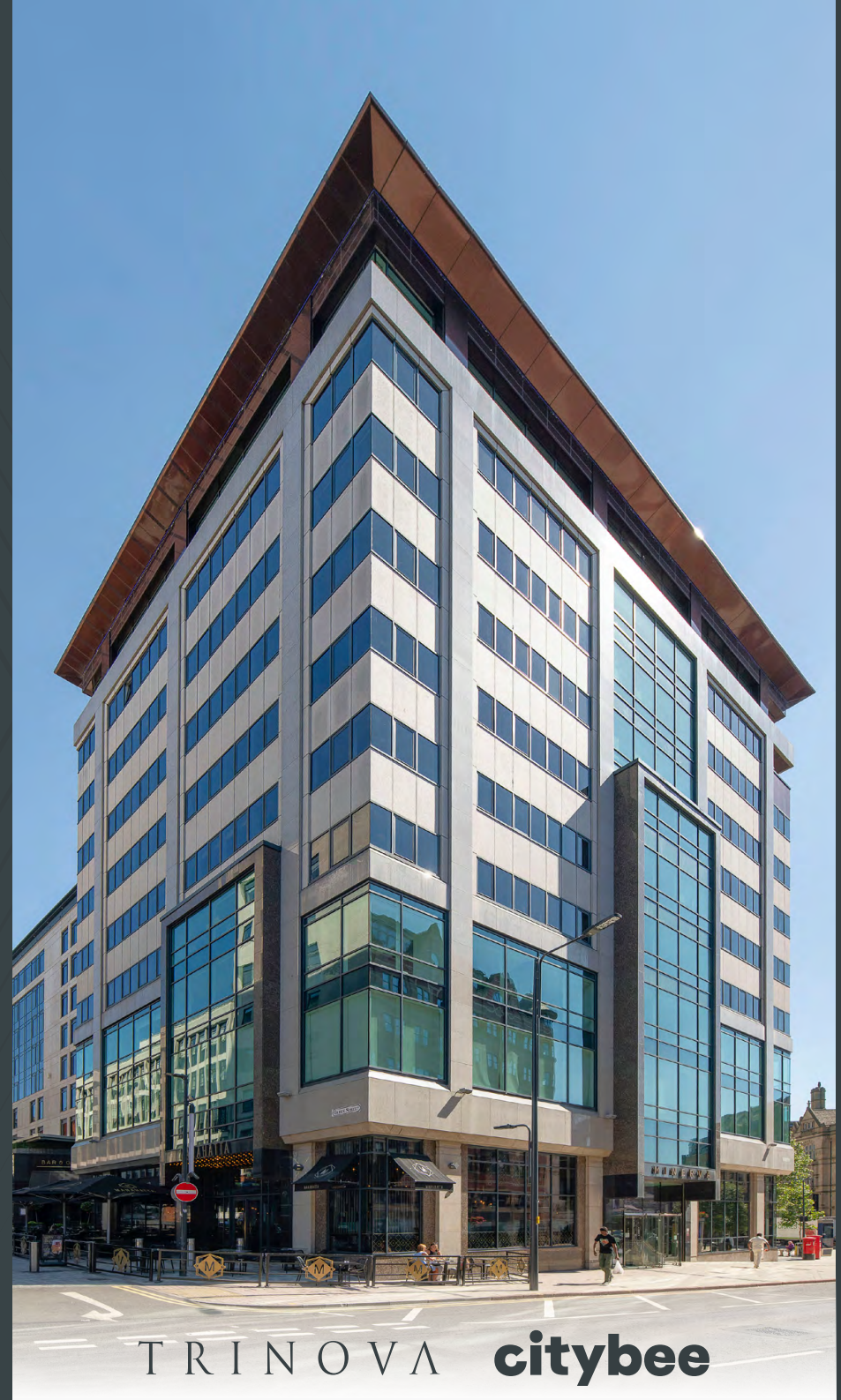
Excellence in Leeds' prime business core

2,659 sq ft

TO LET

BOUTIQUE GRADE A OFFICE SUITE

- FULLY FITTED
- STRONG ESG CREDENTIALS
- PLUG & PLAY VIA NODE



TRINOVA citybee

A PRIME OFFER READY FOR YOU NOW



LS1

Minerva stands proud on East Parade, the centre of Leeds Business District, just minutes walk from Leeds Railway Station and Retail Core.

A timeless and unique refurbishment by award winning interior designers is nothing other than breath-taking as you enter the building through the reception.



1st floor suite B

MINERVA

DESIGNED FOR

YOU

VRF COMFORT
COOLINGTWO
PASSENGER LIFTSNODE FIBRE
INFRASTRUCTUREHIGH QUALITY
WC & SHOWER
FACILITIES

DDA COMPLIANT



LED LIGHTING



FULLY FITTED

RAISED
FLOORBREEAM
'EXCELLENT'
(IN DESIGN)CYCLE
STORAGEEXPOSED
SERVICES

BREAKOUT SPACE



KITCHEN AREA



FITTED OUT



LED LIGHTING

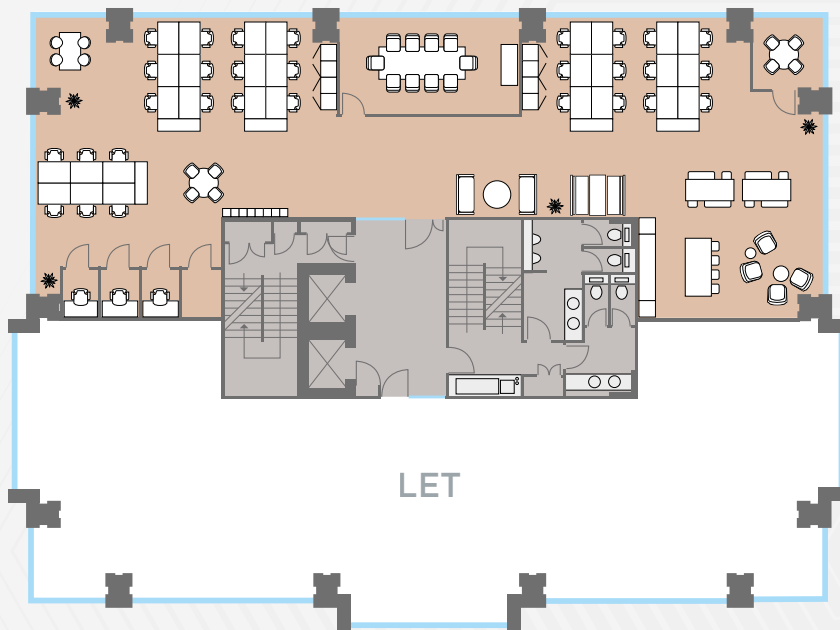


Excellence in Leeds' prime business core

* 1st floor suite B

MINERVA

8TH FLOOR SUITE - INDICATIVE LAYOUT



- 10 Person Boardroom
- 30 Fixed Work Stations
- 4 Person Meeting Room
- 3 Zoom Rooms
- Kitchen
- Breakout Space
- Welcome Area



Plug & Play available via **NODE**
(fully connected within 5-10 days)

CURRENT OCCUPIERS INCLUDE

ABRDN

BNP Paribas

Ecorys

Marks Sattin

FRP Advisory

Gateley

UBS

Aqua Consultants

Sentio Partners

Ritter Sport

LGT Wealth

FULLY FITTED
GRADE A OFFICE SUITE
2,659 SQ FT

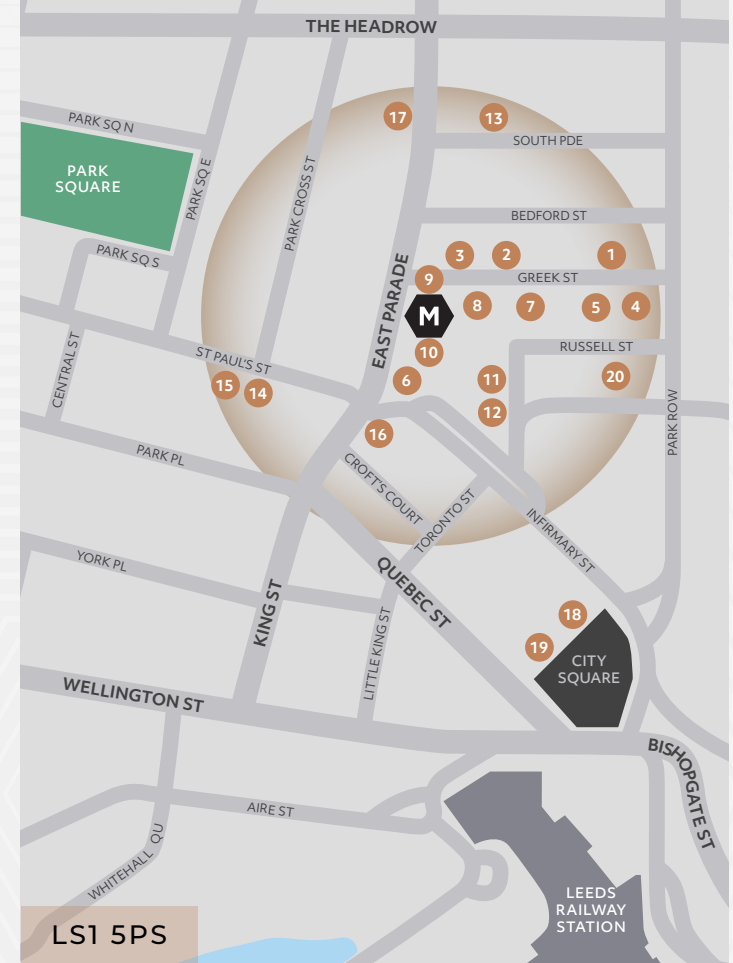
Available from the
end of Q1 2025





Minerva is prominently situated on East Parade within the heart of the City's professional district within 2 minutes walk of Leeds Railway Station and the City's retail core.

The neighbouring Bond Court offers an impressive public realm adjacent to Dakota Deluxe Hotel. The micro location is undoubtedly one of the city's prime leisure locations with some of the finest bars and restaurants including Alchemist, Neighbourhood and Blackhouse complementing the award winning Tattu and Manahatta, the latter two of which are located within Minerva.



AMENITIES

- | | |
|---------------------------|----------------------------|
| 1. THE LIQUORIST | 11. LA BOTTEGA MILANESE |
| 2. THE ALCHEMIST | 12. PRET |
| 3. ALL BAR ONE | 13. SAN CARLO |
| 4. BLACK CAT CLUB | 14. STARBUCKS |
| 5. THE LOST & FOUND | 15. TESCO EXPRESS |
| 6. BLACKHOUSE | 16. THE BOX |
| 7. GUSTO RESTAURANT & BAR | 17. IBERICA |
| 8. DAKOTA HOTEL | 18. BANYAN |
| 9. MANAHATTA | 19. RESTAURANT BAR & GRILL |
| 10. TATTU | 20. MOOSE COFFEE LEEDS |

MINERVA

VAT

All price, premiums and rents etc are quoted exclusive of VAT at the prevailing rate.

Service Charge & Building Insurance

The tenant will be responsible for the payment of the above from the date of legal completion or occupation whichever is earlier. Further information is available on request.

Terms

The suites are available to let either as a whole or individually by way of new effective FRI leases for a term to be agreed.

Legal Costs

Each party to be responsible for their own legal costs incurred in any transaction.

Energy Performance Certificate

The building has an EPC of B (38).

Viewing & Further Information

Strictly by appointment with the joint sole letting Agents.



Nick Gibby

Nick.gibby@jll.com

Christabelle Day

Christabelle.day@jll.com



Elizabeth Ridler

Elizabeth.ridler@knightfrank.com

Victoria Harris

Victoria.harris@knightfrank.com

IMPORTANT NOTICE RELATING TO THE MISREPRESENTATION ACT 1967 AND THE PROPERTY MISDESCRIPTION ACT 1991 (Repeal) Order 2013

Knight Frank and JLL on their behalf and for the sellers or lessors of this property whose agents they are, give notice that: (i) The Particulars are set out as a general outline only for the guidance of intending purchasers or lessees, and do not constitute, nor constitute part of, an offer or contract; (ii) All descriptions, dimensions, references to condition and necessary permissions for use and occupation, and other details are given in good faith and are believed to be correct, but any intending purchasers or tenants should not rely on them as statements or representations of fact, but must satisfy themselves by inspection or otherwise as to the correctness of each of them; (iii) No person employed by Knight Frank or JLL has any authority to make or give any representation or warranty in relation to this property. Unless otherwise stated prices and rents quoted are exclusive of VAT. The date of this publication is September 2024.