

**TO LET**

**NEW BUILD COMMERCIAL PREMISES**

UNIT B1 - 419 SQ FT // 38.93 SQ M

UNIT B2 - 977 SQ FT // 90.77 SQ M



HAMPSHIRE COMMERCIAL

goadsby

**UNITS B1 & B2, POSTMARK PLACE**  
HIGH STREET, EASTLEIGH, HAMPSHIRE SO50 5PJ

## SUMMARY >

- AVAILABLE BY WAY OF A NEW LEASE
- TWO GF UNITS AVAILABLE WITHIN THE SAME BUILDING
- LOCATED ON WELLS ROAD ADJACENT TO THE WALKWAY LINKING HIGH STREET AND MARKET STREET PART OF THE EASTLEIGH TOWN CENTRE REGENERATION SCHEME
- SUITABLE FOR A VARIETY OF USES INCLUDING OFFICE, RETAIL, MEDICAL, EDUCATION AND COMMUNITY

RENT: UNIT B1 £8,500 + VAT PER ANNUM EXCL.

RENT: UNIT B2 £14,600 + VAT PER ANNUM EXCL.



Unit B1 - A-22  
EPC Rating



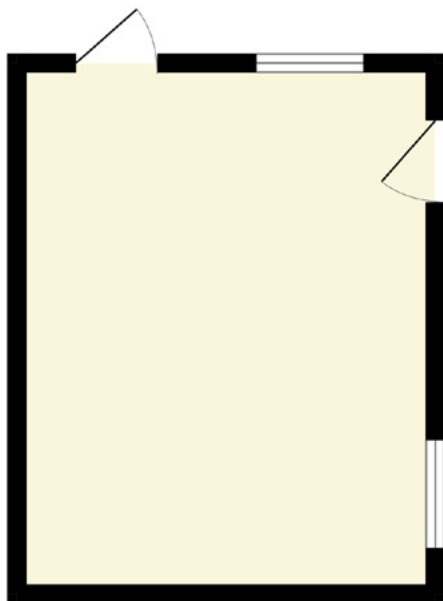
Unit B2 - A-23  
EPC Rating



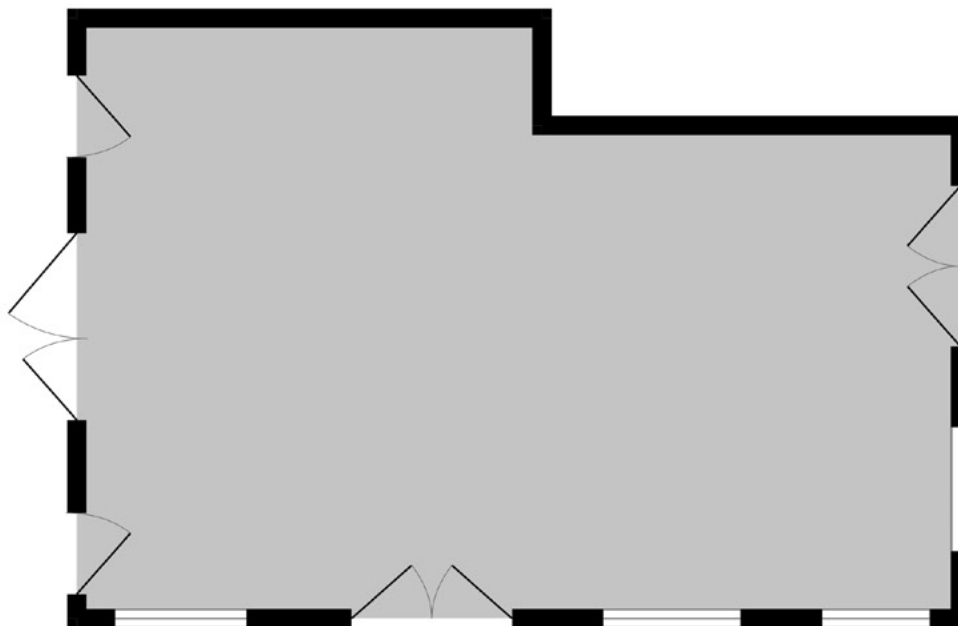
Excellent  
Transport Links



UNIT B1



UNIT B2



Whilst every attempt has been made to ensure the accuracy of the floorplan contained here, measurements of doors, windows, rooms and any other items are approximate and no responsibility is taken for any error, omission or mis-statement. This plan is for illustrative purposes only and should be used as such by any prospective purchaser. The services, systems and appliances shown have not been tested and no guarantee as to their operability or efficiency can be given.  
Made with Metropix ©2025



## Location

- These units are prominently positioned on Eastleigh High Street
- Eastleigh is busy town positioned between the Cities of Winchester and Southampton
- The town has excellent transport links to the M3 and M27
- The train station is a 3-minute walk from the subject property which connects the town to London Waterloo and Weymouth
- On street parking is available directly outside the subject property, along with the Swan centre multi story car park and Mitchell Road car park close by
- Nearby occupiers include:



Iceland



## Description

- These brand new commercial units are part of the new Postmark Place development a new mixed use scheme in Eastleigh Town Centre
- Well-presented internally and are currently fitted with carpet tiles and double-glazed windows
- Both properties have a large glass frontage with multiple entrances
- LED panel lighting
- Electric heating

## Accommodation

Unit B1	419 sq ft	38.93 sq m
Unit B2	977 sq ft	90.77 sq m

## Rent

Unit B1	£8,500 plus VAT per annum, exclusive
Unit B2	£14,600 plus VAT per annum, exclusive

## Lease

The premises are available to let by way of a new FRI lease.

## Service Charge

Disclosed upon further enquiries.

## Use Classes

The following uses have been permitted Class E (a) Retail E(c) Financial and Professional services) E(e) Medical/health services, E(g)(i) Office, F1 Learning and non-residential Institutions and F2 Local Community Uses. Hot food, cafes and restaurants are not permitted.

## Rateable Value

Unit B1 £9,100 (from 1<sup>st</sup> April 2026)  
Unit B2 £18,000 (from 1<sup>st</sup> April 2026)

Rates payable at 38.2p in the £ (year commencing 1<sup>st</sup> April 2026).

## Legal Costs

Each party to be responsible for their own legal costs incurred in the transaction.

## VAT

Unless otherwise stated terms are strictly exclusive of Value Added Tax and interested parties must satisfy themselves as to the incidence of this tax in the subject case.

## Viewing

Strictly by prior appointment through the agents Goadsby, through whom all negotiations must be conducted.



**Amy Baker**  
amy.baker@goadsby.com  
07771 977221

**Thomas Siddall**  
thomas.siddall@goadsby.com  
07990 788485





Unit B1



Unit B1



## Important

### THE CODE FOR LEASING BUSINESS PREMISES

The Code for Leasing Business Premises in England and Wales strongly recommends you seek professional advice from a surveyor or solicitor before agreeing or signing a business tenancy/lease agreement. The Code is available [HERE](#).

### ANTI MONEY LAUNDERING REGULATIONS

Under Anti Money Laundering Regulations, we are obliged to verify the identity of a proposed purchaser once a sale has been agreed and prior to instructing solicitors. This is to help combat fraud and money laundering and the requirements are contained in statute. A letter will be sent to the proposed purchaser once terms have been agreed.

### REFERENCES

Once a letting has been agreed, the landlord may request copies of the most recent accounts/bank statements for the proposed tenant as part of the letting process. This does not form part of a contract, nor constitute a deposit in any respect of any transaction, nor does it guarantee acceptance by the landlord.

These particulars are believed to be correct, but their accuracy is not guaranteed and they do not form an offer or contract. STRICTLY SUBJECT TO CONTRACT, ALL MEASUREMENTS APPROXIMATE. Agents note: At no time have we undertaken a structural survey and services have not been tested. Interested parties should satisfy themselves as necessary, to the structural integrity of the premises and condition/working order of services, plant or equipment.

[goadsby.com](https://www.goadsby.com)

