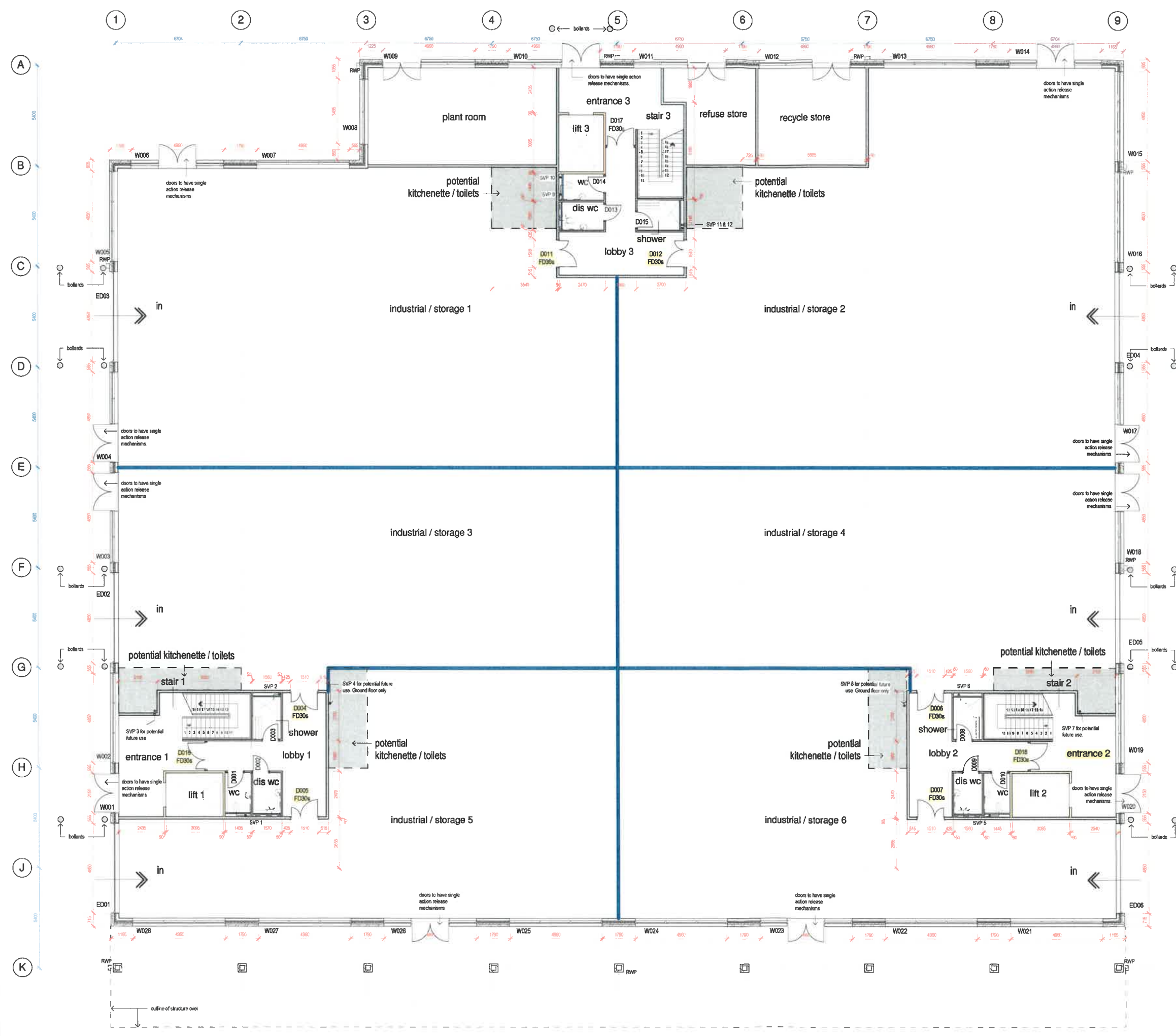


DO NOT SCALE FROM THIS DRAWING. WORK TO FIGURED DIMENSIONS ONLY. THIS DRAWING IS THE COPYRIGHT OF STANLEY BRAGG ARCHITECTS LTD AND SHOULD NOT BE REPRODUCED WITHOUT THEIR EXPRESS PERMISSION.

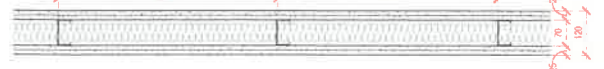
- SETTING OUT: Contractor to confirm all dimensions on site.
- CONSTRUCTION OF: SKELETON Components are for structural opening etc. The contractor must allow tolerances for building in, fitting and joining.
- CONFORM TO DIMENSIONS as set for all components prior to manufacture.
- REPORT ALL DISCREPANCIES AND/OR AMBIGUITIES to Stanley Bragg Architects Limited immediately, and obtain their instructions before proceeding.
- READ THIS DRAWING in conjunction with Stanley Bragg Architects Limited's complete package of drawings and documentation, including their Design's Risk Assessment.
- READ THIS DRAWING in conjunction with the complete package of drawings and documentation provided by the project design team and with the Employer's Requirements.
- SPECIFIED ITEMS to be considered "or equal to Architect's approval" unless specifically stated to the contrary.
- INSTALLATION/QUALITY of all materials to be in accordance with manufacturer directions and any given standards therein.
- ALL WORK to be carried out in accordance with relevant British Standards, the Building Regulations, and with the standards required by the applicable building warranty scheme.



### Internal Wall Type A



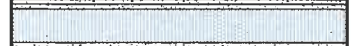
Wall Type A - 120 mm o/a Non Loadbearing - Rw 50dB - General Wall construction



2 x layer 12.5mm British Gypsum Wallboard both sides of 70mm Gyproframe metal Studs @600mm centres, with 18mm ply fixed between studs using Gyproframe Service Support plates where required. 50mm Isover Partition Roll between. System Reference A206142

To wet areas apply 2 coats of Gyproc Drywall Sealer.

### Internal Wall Type B



Wall Type B - 142 mm o/a Non Loadbearing - Rw 59dB - General Wall construction



2 x layer 12.5mm British Gypsum SoundBloc both sides of 92mm Gyproframe AcouStuds @600mm centres, with 18mm ply fixed between studs using Gyproframe Service Support plates where required. 100mm Isover Partition Roll between. System Reference A206A282

To wet areas apply 2 coats of Gyproc Drywall Sealer.

### Internal Wall Type C



Wall Type C - Shaftwall Around Lift Shaft

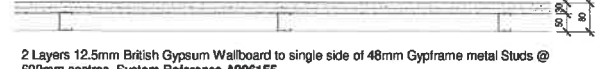


2 Layers 12.5mm British Gypsum Gyproc Fireline to single side of 92mm I Studs @600mm centres. Shaft side fitted with Gyproc Coreboard retained by retaining Channel. 25mm Isover Acoustic Partition Roll in cavity. System Reference A306006/025

### Internal Wall Type D



Wall Type D - General Lining Wall construction



2 Layers 12.5mm British Gypsum Wallboard to single side of 48mm Gyproframe metal Studs @ 600mm centres. System Reference A206155

Partition Type Key  
1 : 10

REV	DESCRIPTION	DATE
C5	Double Doors Last & Hall	16.01.19
C4	Final E&S doors all open in direction of travel	13.12.18
C3	Slab Core Doors to open upwards. Bolsters shown	03.12.18
C2	Slab Width Increased. Door included within lobby	16.11.18
C1	Tender Issue	06.11.18
REV	DESCRIPTION	DATE

DRAWING STATUS  
**CONSTRUCTION**

**Stanley Bragg**  
ARCHITECTS

STANLEY BRAGG ARCHITECTS LIMITED  
PAPPIUS HOUSE, FIRST FLOOR, TOLLGATE WEST, COLCHESTER  
ESSEX, CO1 4AG, T: 0206 971971  
2nd FLOOR, ELDOCK HOUSE, ELDOCK STREET, LONDON, EC2M 7LS  
T: 0203 5675 925  
E: architects@stanleybragg.co.uk, forname.surname@stanleybragg.co.uk

CLIENT  
LMSL GROUP

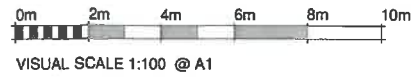
PROJECT  
43 - 49 Fowler Rd, Ilford

DRAWING  
Proposed Ground Floor Plan

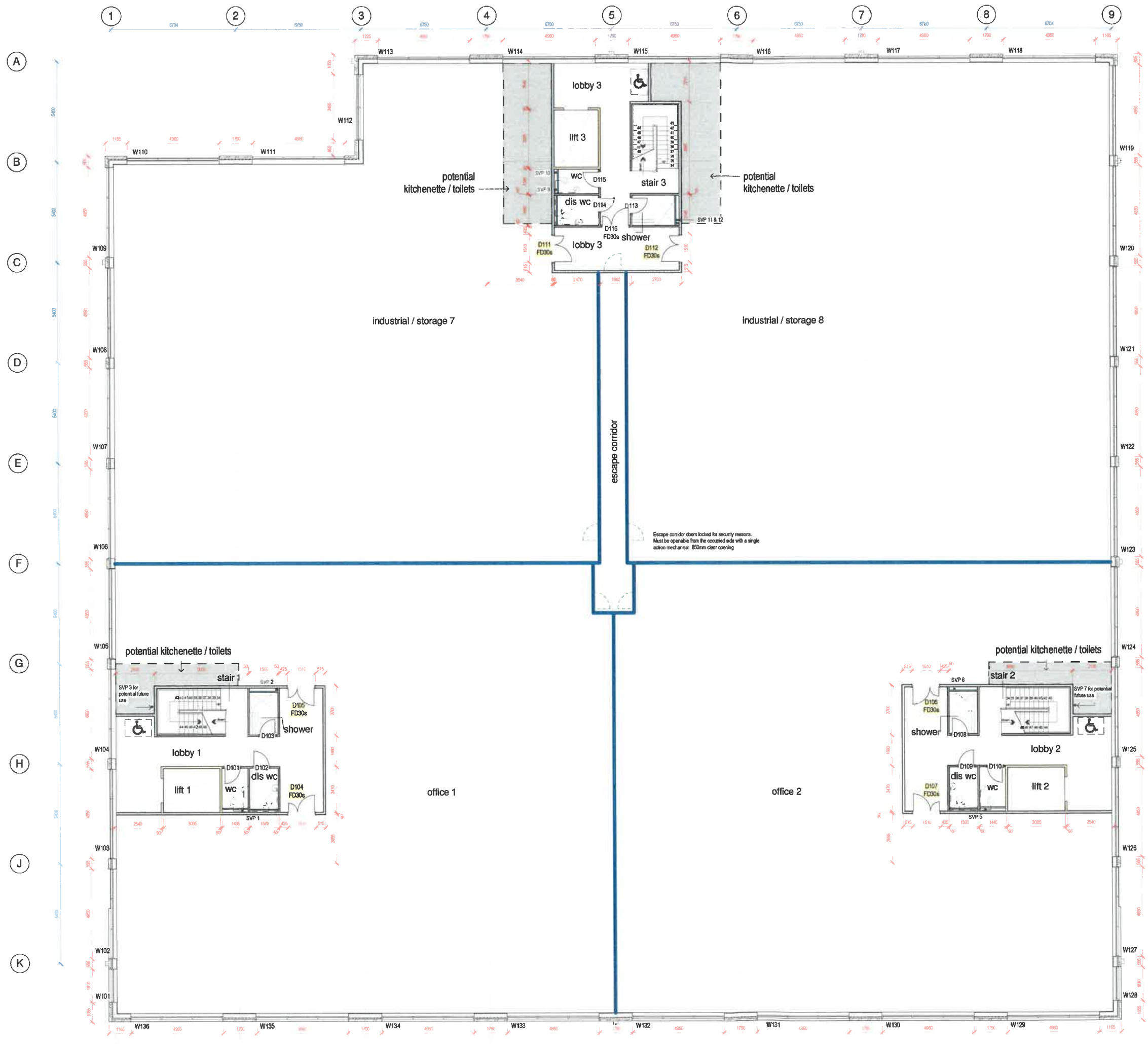
SCALE  
As indicated @ A1

DATE  
September 2018

DRAWING NUMBER  
6627-1202-C5



Ground Floor  
1 : 100



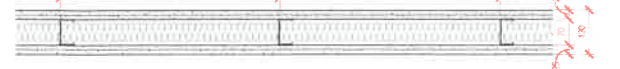
First Floor  
1 : 100

- DO NOT SCALE FROM THIS DRAWING. WORK TO FOLDED DIMENSIONS ONLY. THIS DRAWING IS THE COPYRIGHT OF STANLEY BRAGG ARCHITECTS LTD AND SHOULD NOT BE REPRODUCED WITHOUT THEIR EXPRESS PERMISSION.
- SETTING OUT. All dimensions to structural faces.
  - SETTING OUT. Contractor to confirm all dimensions on site.
  - CONSTRUCTION OF JOINTS. Components are for structural opening sizes. The contractor must allow for tolerances for building in, filling and sealing.
  - CONFIRM DIMENSIONS on site for all components prior to installation.
  - REPORT ALL DISCREPANCIES AND/OR AMBIGUITIES to Stanley Bragg Architects Limited immediately, and obtain their instructions before proceeding.
  - READ THIS DRAWING in conjunction with Stanley Bragg Architects Limited's contract package of drawings and documentation, including their Designer's Risk Assessment.
  - READ THIS DRAWING in conjunction with the complete package of drawings and documentation provided by the project design team and with the Employer's Requirements.
  - SPECIFIED ITEMS to be considered 'or equal to Architects approval' unless specifically stated to the contrary.
  - INSTALLATION/REPAIR/REPLACEMENT of all services to be in accordance with manufacturer's directions and any given standards therein.
  - ALL WORK to be carried out in accordance with relevant British Standards, the Building Regulations, and with the standards required by the applicable building warranty scheme.

### Internal Wall Type A



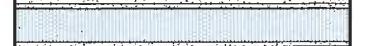
Wall Type A - 120 mm o/a Non Loadbearing - Rw 50dB - General Wall construction



2 x layer 12.5mm British Gypsum Wallboard both sides of 70mm Gyframe metal Studs @600mm centres, with 18mm ply fixed between studs using Gyframe Service Support plates where required. 50mm Isover Partition Roll between. System Reference A206142

To wet areas apply 2 coats of Gyproc Drywall Sealer.

### Internal Wall Type B



Wall Type B - 142 mm o/a Non Loadbearing - Rw 59dB - General Wall construction



2 x layer 12.5mm British Gypsum SoundBloc both sides of 92mm Gyframe Acoustuds @600mm centres, with 18mm ply fixed between studs using Gyframe Service Support plates where required. 100mm Isover Partition Roll between. System Reference A206A292

To wet areas apply 2 coats of Gyproc Drywall Sealer.

### Internal Wall Type C



Wall Type C - Shaftwall Around Lift Shaft

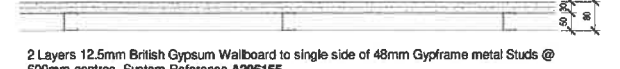


2 Layers 12.5mm British Gypsum Gyproc Fireline to single side of 92mm I Studs @600mm centres. Shaft side fitted with Gyproc Coreboard retained by retaining Channel. 25mm Isover Acoustic Partition Roll in cavity. System Reference A306006/025

### Internal Wall Type D



Wall Type D - General Lining Wall construction



2 Layers 12.5mm British Gypsum Wallboard to single side of 48mm Gyframe metal Studs @ 600mm centres. System Reference A206155

Partition Type Key  
1 : 10

REV	DESCRIPTION	DATE
C5	Double Doors Leaf & Half	SN 16.01.19
C4	Escape corridor doors amended.	SN 10.12.18
C3	Shut Core 2 to include wire lobby door	SN 03.10.18
C2	Shut width increased	SN 16.11.18
C1	Trailer issue	SN 06.11.18

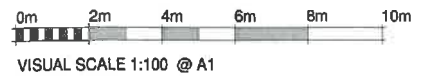
DRAWING STATUS  
**CONSTRUCTION**

**Stanley Bragg**  
ARCHITECTS

STANLEY BRAGG ARCHITECTS LIMITED  
PAPPIUS HOUSE, FIRST FLOOR, TOLLGATE WEST, COLCHESTER  
ESSEX, CO11 2JF, 01206 871871

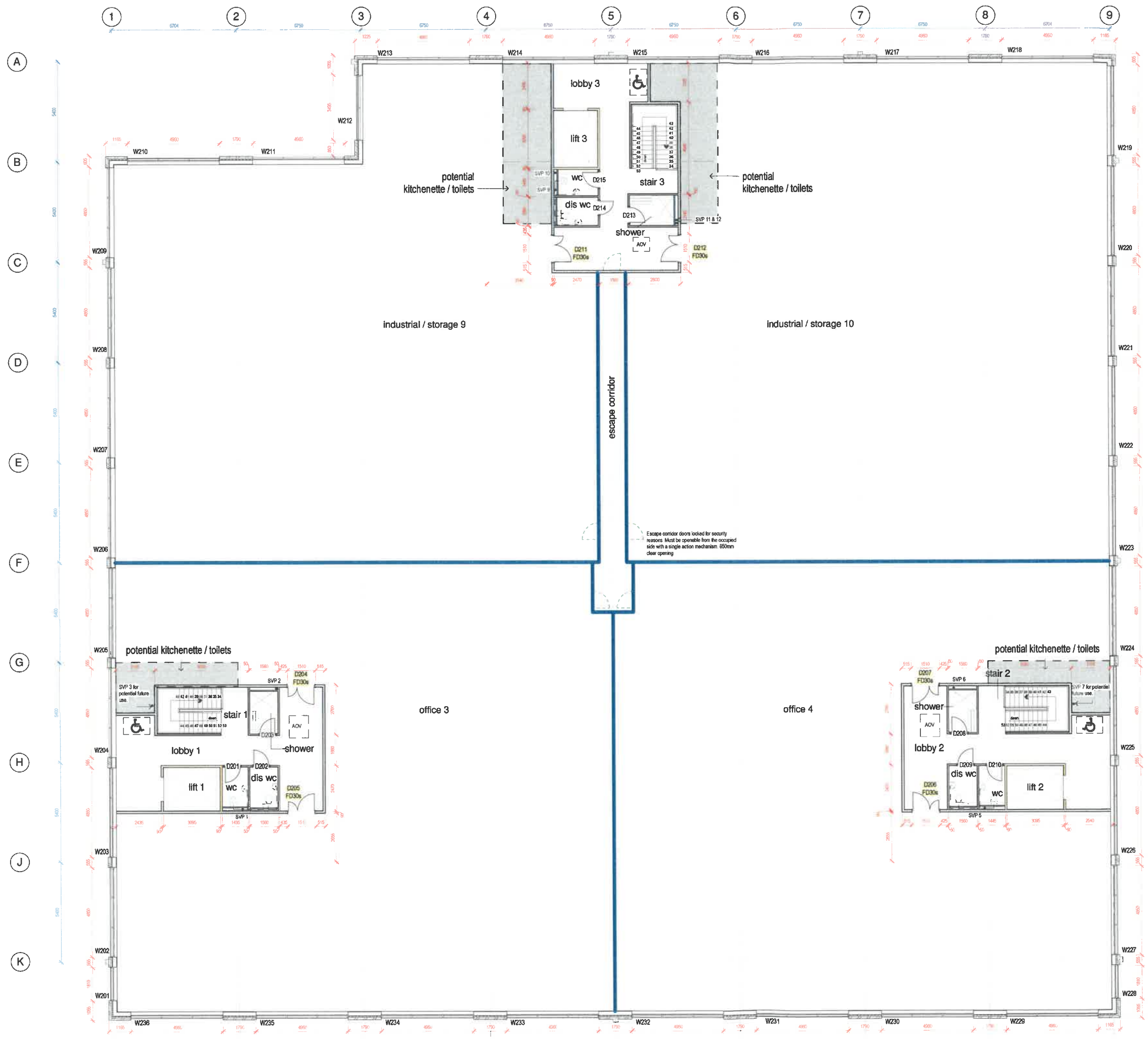
3rd FLOOR, ELDON HOUSE, ELDON STREET, LONDON, EC2M 7L6  
T: 0203 8675 925  
E: architects@stanleybragg.co.uk, forname@stanleybragg.co.uk

CLIENT	LMSL GROUP
PROJECT	43 - 49 Fowler Rd, Ilford
DRAWING	Proposed First Floor Plan
SCALE	As indicated @ A1
DATE	October 2018
DRAWING NUMBER	6627-1203-05



DO NOT SCALE FROM THIS DRAWING. WORK TO DIMENSIONS ONLY. THIS DRAWING IS THE COPYRIGHT OF STANLEY BRAGG ARCHITECTS LTD AND SHOULD NOT BE REPRODUCED WITHOUT THEIR EXPRESS PERMISSION.

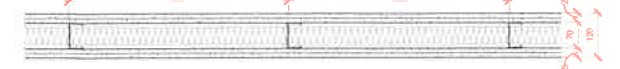
- SETTING OUT: All dimensions to structural faces.
- SETTING OUT: Contractor to confirm dimensions on site.
- CONSTRUCTION: Components are for structural opening sizes. The contractor must allow tolerances for building in, filling and joining.
- CONFORM: DIMENSIONS on site for all components prior to construction.
- REPORT ALL DISCREPANCIES AND/OR AMBIGUITIES to Stanley Bragg Architects Limited immediately, and obtain their instructions before proceeding.
- READ THE DRAWING in conjunction with Stanley Bragg Architects Limited's complete package of drawings and documentation, including their Designer's Risk Assessment.
- READ THE DRAWING in conjunction with the complete package of drawings and documentation provided by the project design team and with the Employer's Requirements. SPECIFIED ITEMS to be considered for equal to Architect's approval unless specifically stated to the contrary.
- RETALIATION/APPLICATION of all materials to be in accordance with manufacturer's practices and any given standards therein.
- ALL WORK to be carried out in accordance with relevant British Standards, the Building Regulations, and with the standards required by the applicable building warranty scheme.



### Internal Wall Type A



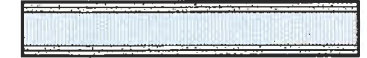
Wall Type A - 120 mm o/a Non Loadbearing - Rw 50dB - General Wall construction



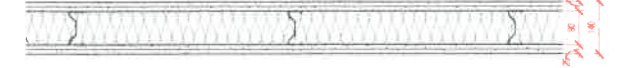
2 x layer 12.5mm British Gypsum Wallboard both sides of 70mm Gyproframe metal studs @600mm centres, with 18mm ply fixed between studs using Gyproframe Service Support plates where required. 50mm Isover Partition Roll between. System Reference A206142

To wet areas apply 2 coats of Gyproc Drywall Sealer.

### Internal Wall Type B



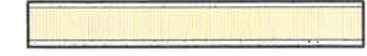
Wall Type B - 142 mm o/a Non Loadbearing - Rw 59dB - General Wall construction



2 x layer 12.5mm British Gypsum SoundBloc both sides of 92mm Gyproframe AcouStuds @600mm centres, with 18mm ply fixed between studs using Gyproframe Service Support plates where required. 100mm Isover Partition Roll between. System Reference A206A292

To wet areas apply 2 coats of Gyproc Drywall Sealer.

### Internal Wall Type C



Wall Type C - Shaftwall Around Lift Shaft

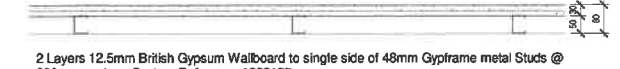


2 Layers 12.5mm British Gypsum Gyproc Fireline to single side of 92mm I studs @600mm centres. Shaft side fitted with Gyproc Coreboard retained by retaining Channel. 25mm Isover Acoustic Partition Roll in cavity. System Reference A306006/025

### Internal Wall Type D



Wall Type D - General Lining Wall construction



2 Layers 12.5mm British Gypsum Wallboard to single side of 48mm Gyproframe metal studs @ 600mm centres. System Reference A206155

Partition Type Key  
1 : 10

REV	DESCRIPTION	DATE
CS	Double Door Leaf & Half	18.01.18
CA	Escape corridor doors amended	10.10.18
CB	Escape corridor doors 800mm clear opening	02.10.18
CC	Stair width increased	16.11.18
CD	Tender issue	06.11.18

DRAWING STATUS  
**CONSTRUCTION**

**Stanley Bragg**  
ARCHITECTS

STANLEY BRAGG ARCHITECTS LIMITED  
PAPPIUS HOUSE, FIRST FLOOR, TOLLGATE WEST, COLCHESTER  
ESSEX, CO3 3AD. T: 01206 51131  
3RD FLOOR, ELDON HOUSE, ELDON STREET, LONDON, EC2M 7LS  
T: 0203 6675 925  
E: architects@stanleybragg.co.uk, forwarnie.ruma@stanleybragg.co.uk

CLIENT  
LMSL GROUP

PROJECT  
43 - 49 Fowler Rd, Ilford

DRAWING  
Proposed Second Floor Plan

SCALE  
As indicated @ A1

DATE  
October 2018

DRAWING NUMBER  
6627-1204-C5

