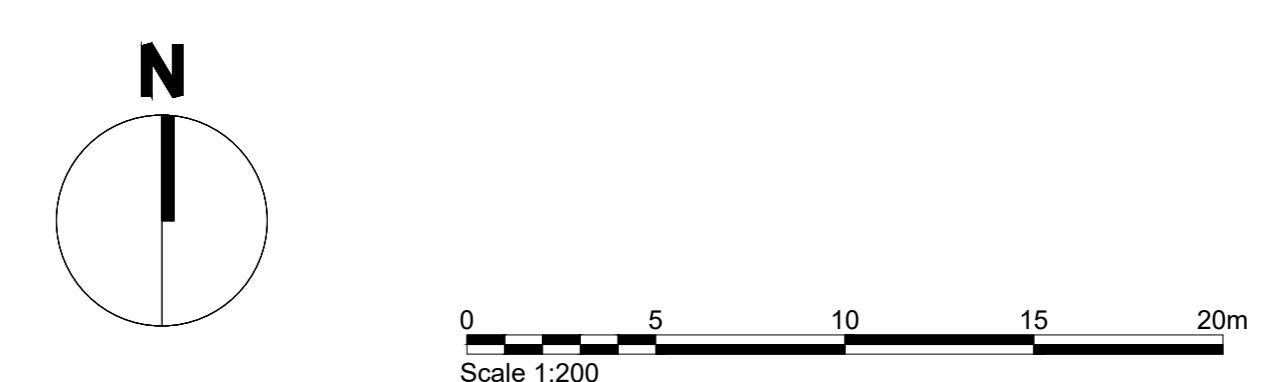
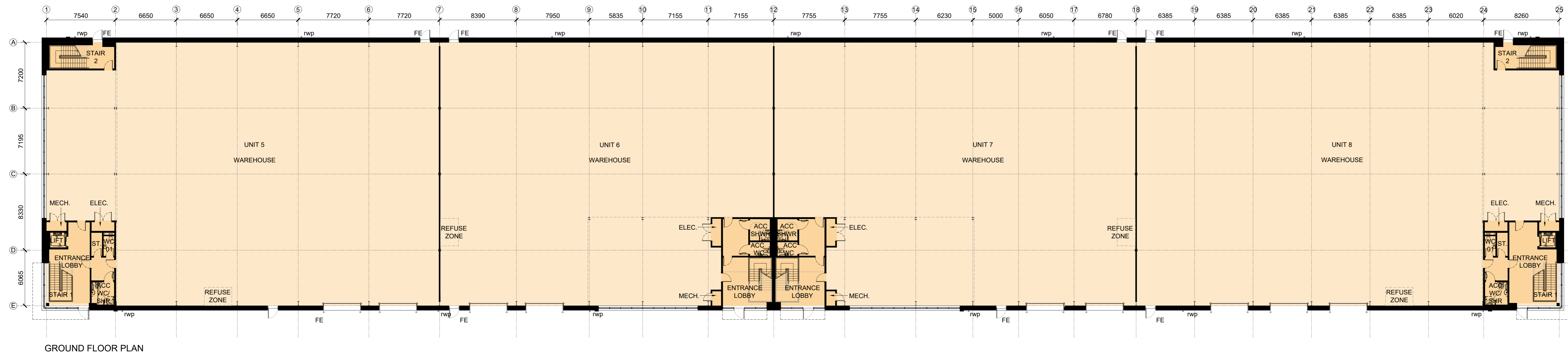
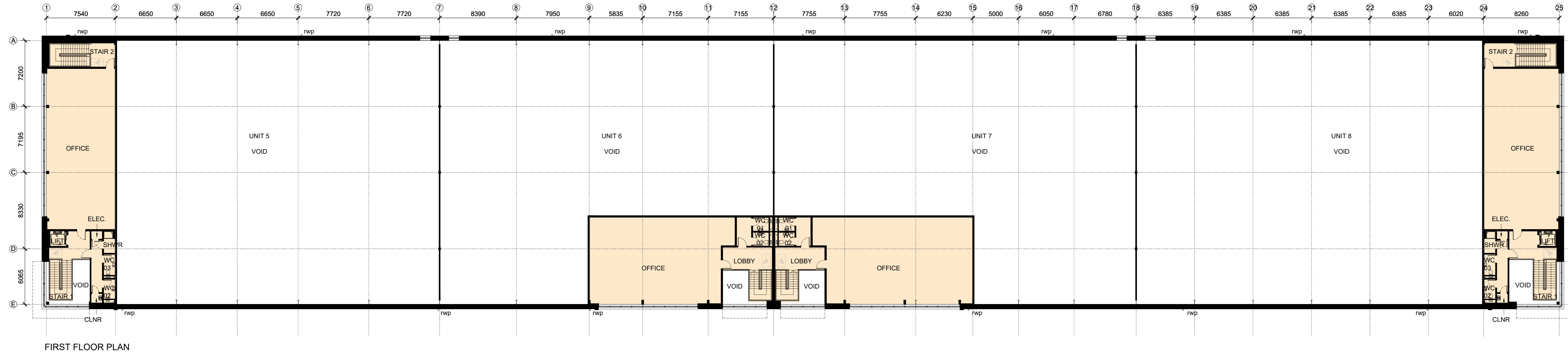


UNIT 5	
GEA	
GF	13,929m ² / 1,294m ²
FF	2,529m ² / 235m ²
Total	16,458m² / 1,529m²

UNIT 6	
GEA	
GF	11,700m ² / 1,087m ²
FF	2,121m ² / 197m ²
Total	13,821m² / 1,284m²

UNIT 7	
GEA	
GF	12,691m ² / 1,179m ²
FF	2,292m ² / 213m ²
Total	14,983m² / 1,392m²

UNIT 8	
GEA	
GF	14,972m ² / 1,391m ²
FF	2,723m ² / 253m ²
Total	17,695m² / 1,644m²



Client:
XLB PROPERTY & PATRON HOOK LTD

Project:
BARTLEY WOOD BUSINESS PARK, HOOK

Drawing Title:
UNIT 5-8 PROPOSED FLOOR PLANS

Scale @ A0: 1:200
 Checked by: ME
 Date: MAY 21

Job No: 11248
 Stage: PL 112
 Drawing No: C

Issue Status:
 Construction Preliminary
 Information Approval
 Tender

Offices:
 Working London
 Milton Keynes
 Warsaw

PRC Architecture & Planning