

KH



FROM 3,230 SQ FT
UP TO 6,983 SQ FT.

35 KINGS HILL AVENUE

KENT ME19



Highlights

Workspace

Plans & Spec

Team

KINGS HILL SPORTS PARK

KINGS HILL GOLF CLUB

KINGS HILL LINEAR PARK

30 TOWER VIEW

LIBERTY SQUARE



35 KINGS HILL AVENUE

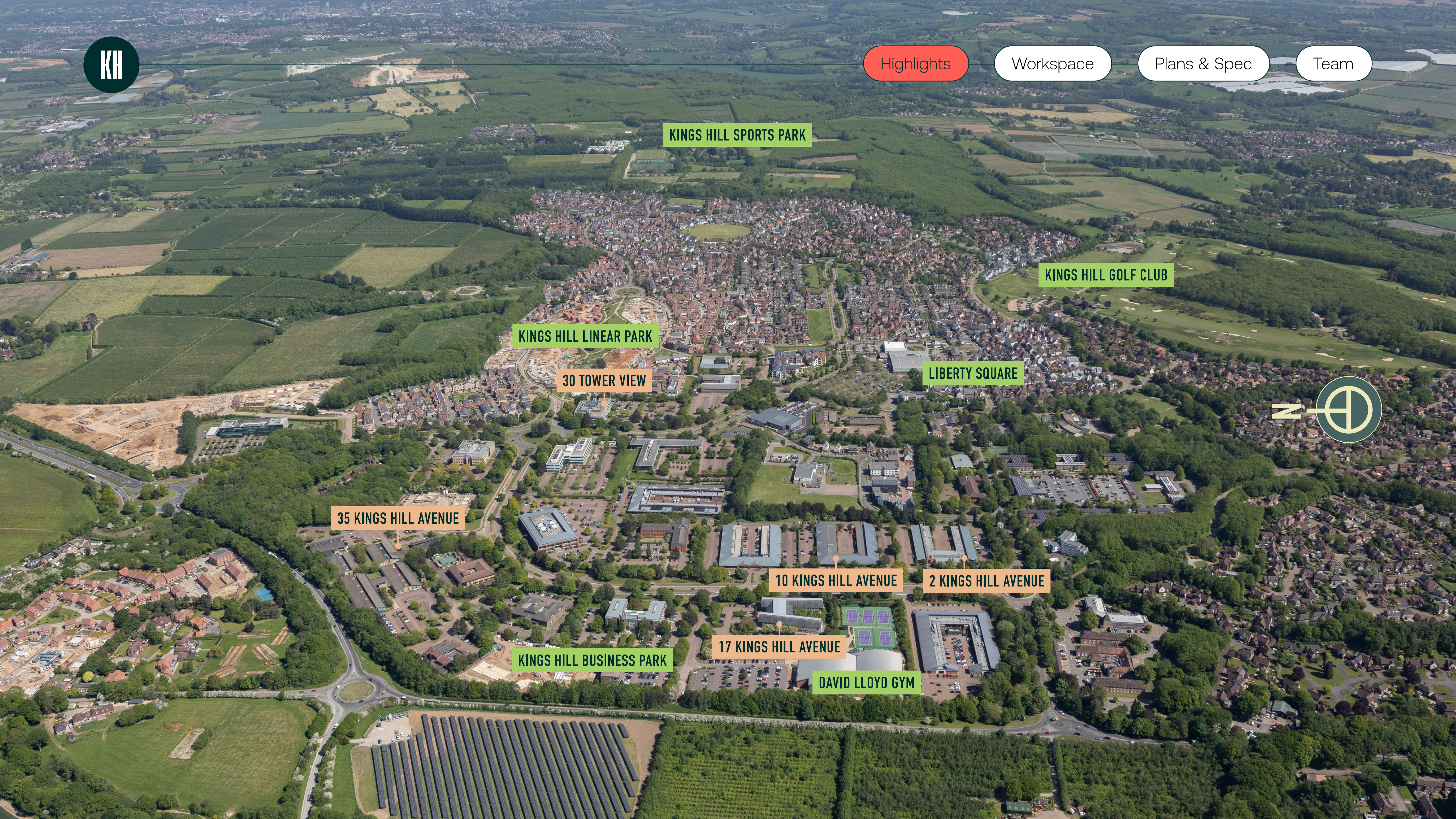
10 KINGS HILL AVENUE

2 KINGS HILL AVENUE

KINGS HILL BUSINESS PARK

17 KINGS HILL AVENUE

DAVID LLOYD GYM





Highlights

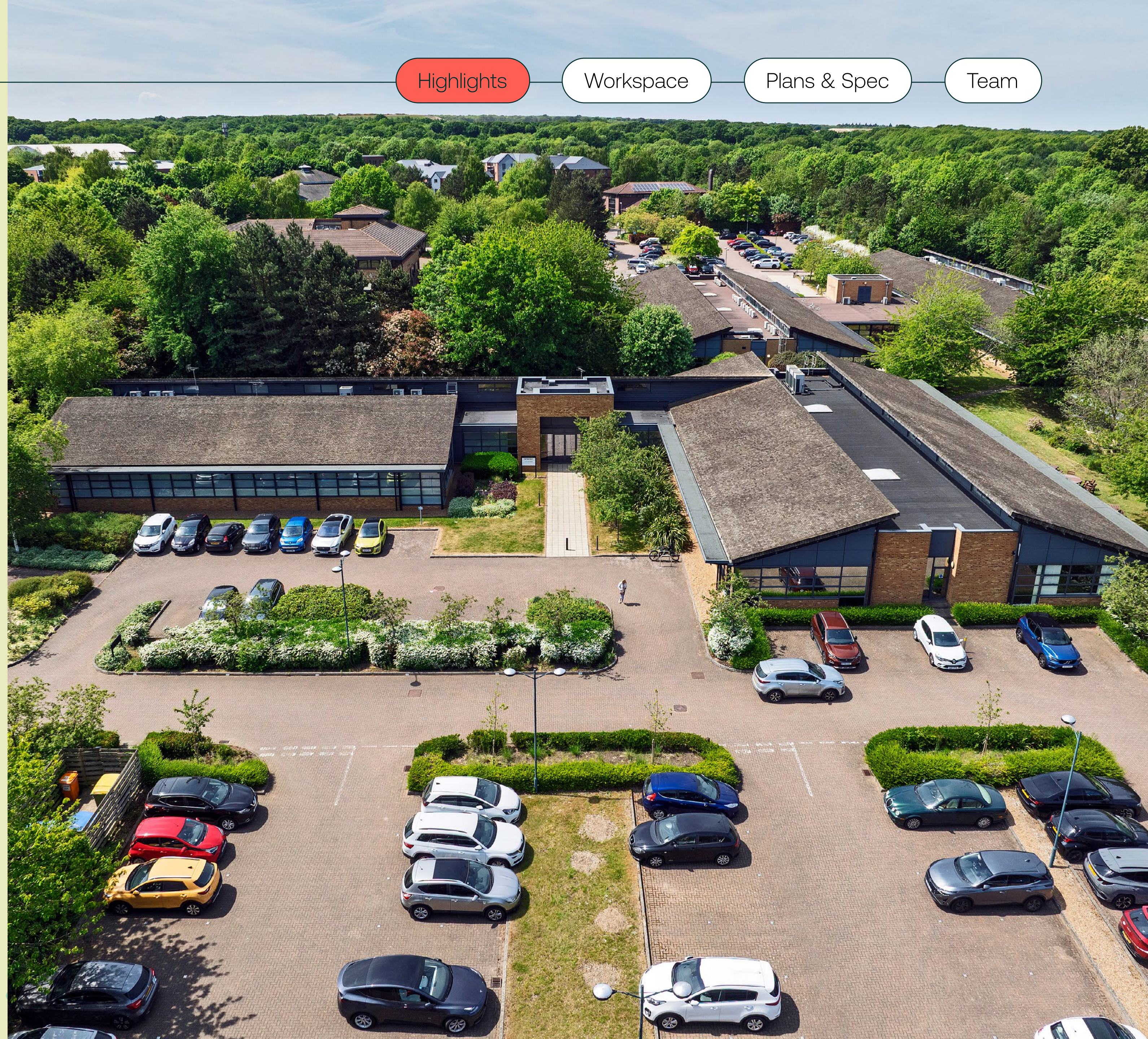
Workspace

Plans & Spec

Team

THE HIGHLIGHTS

- Targeted EPC A
- Contemporary refurbished office space with spacious pitch roof feature
- New all-electric air-conditioning
- On-site car parking ratio of 1:126 sq ft
- Available Q1 2026



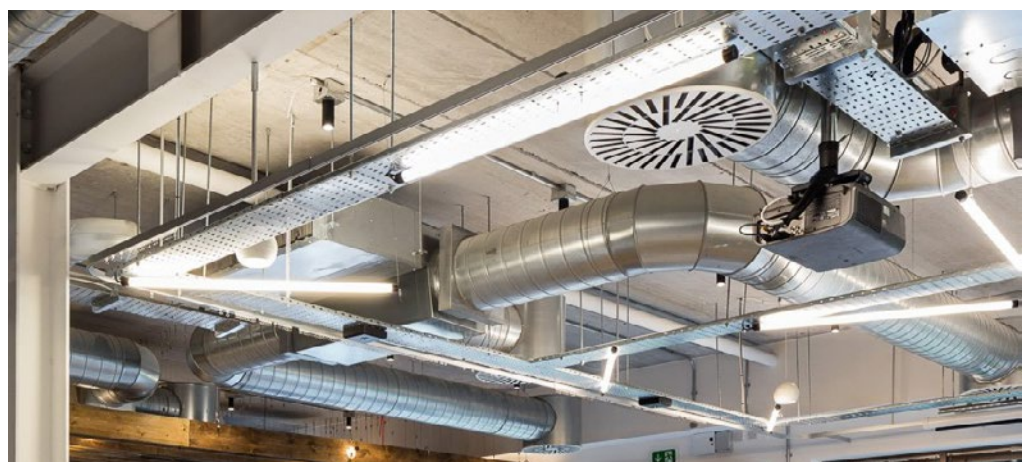


Highlights

Workspace

Plans & Spec

Team



A modern and sophisticated palette featuring soft whites, muted taupes, warm greys, and brushed metallics, carefully balanced to suit a professional, flexible workplace environment.

The tones are calm, understated, and adaptable, offering a neutral foundation that will appeal to a wide tenant base.



Computer generated images



Highlights

Workspace

Plans & Spec

Team

Take a look at VR from 35 Kings Hill Avenue



Computer generated image



Highlights

Workspace

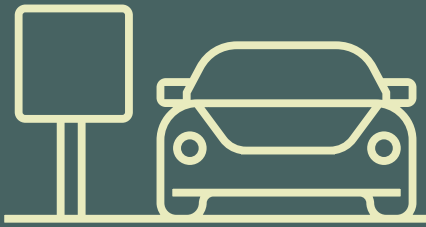
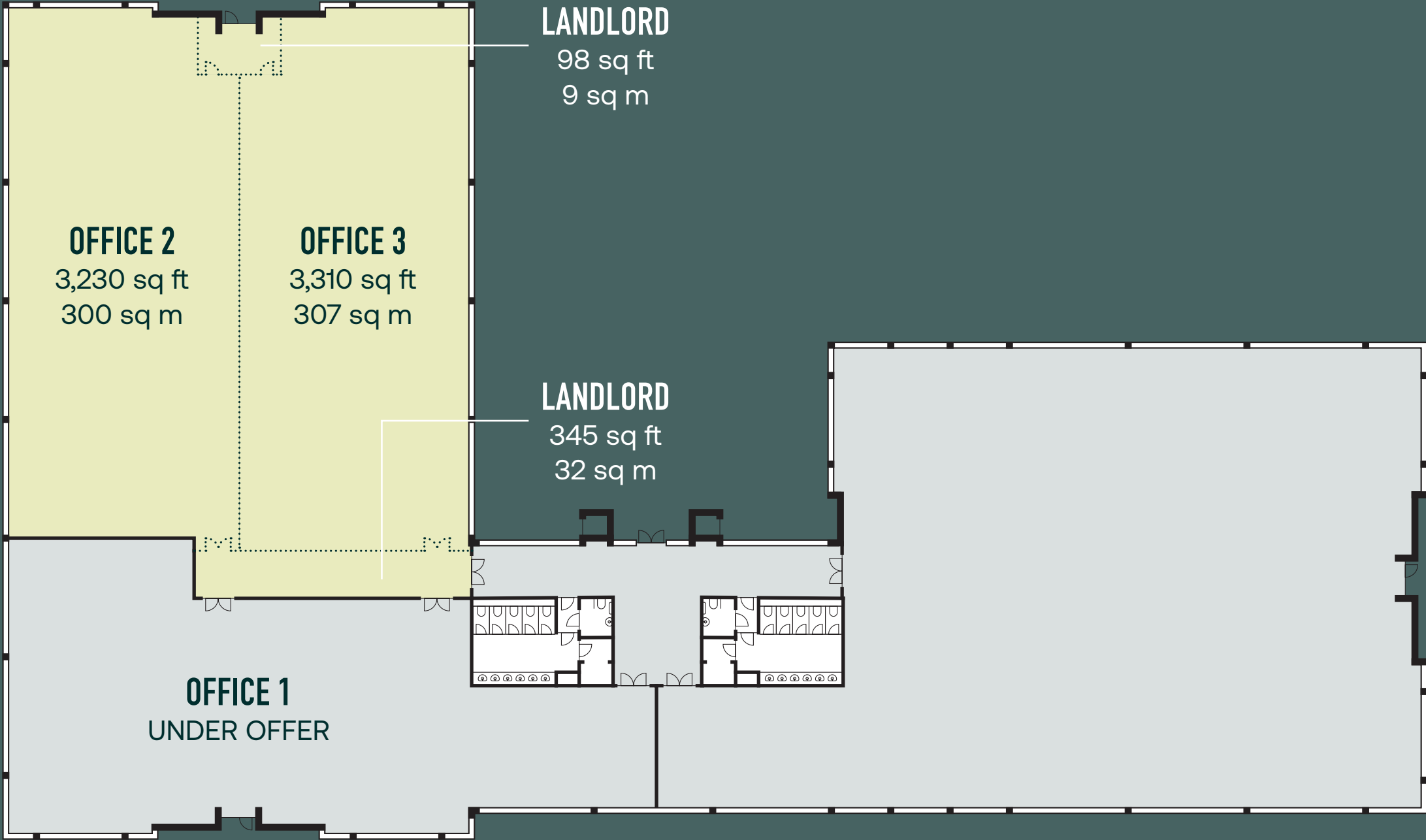
Plans & Spec

Team

FLOORPLAN & SPEC

3,230–6,983 SQ FT

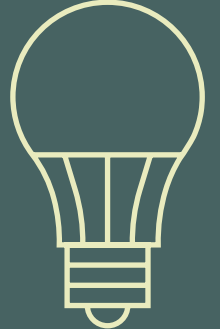
POTENTIAL SPLITS
 AVAILABLE
 LET



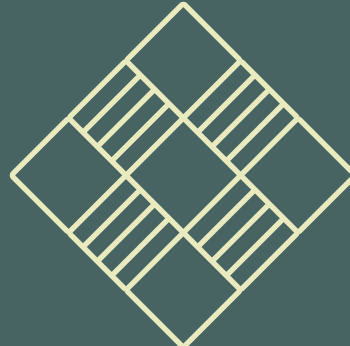
Car parking with EV charging
1:126 sq ft



Fast broadband options from multiple suppliers



LED lighting



Carpeted raised access floors



WC's



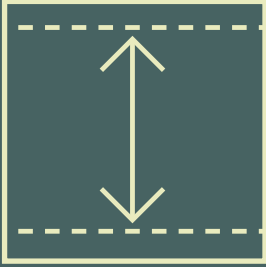
Targeted EPC 'A'



New 'CAT-A' refurbishment



New all-electric air-conditioning



Minimum floor-to-ceiling height of 2.737m



GET IN TOUCH WITH OUR TEAM



ANDY TUCKER

07721 260545
atucker@hanovergreen.co.uk



STEVE RICHMOND

07771 900682
stephen.richmond@ryan.com

- Highlights
- Workspace
- Plans & Spec
- Team



**35 Kings Hill Avenue
Kings Hill, Kent
ME19 4AR
///built.clays.bridge**

kings-hill-offices.com

These brief particulars have been prepared as agents for our clients and are intended as a convenient guide to supplement an inspection or survey. Their accuracy is not guaranteed. They contain statements of opinion and in some instances we have relied on information provided by others. You should verify the particulars on your visit to the property and the particulars do not obviate the need for a full survey and all the appropriate enquiries. Accordingly, there shall be no liability as a result of any error or omission in the particulars or any other information given.

April 2026. Reference 2511021. Design by **JAMES&JAMES** | jamesjames.design

KINGS HILL