

# Unit 13, Ashchurch Business Centre

Alexandra Way, Ashchurch, Tewkesbury, GL20 8NB

Leasehold  
Industrial/Warehouse Unit

7,493 Sq Ft (696.11 Sq M)



**To Let**



## Amenities



24/7 Access



Loading Door



Parking

## Unit 13, Ashchurch Business Centre

7,493 Sq Ft (696.22 Sq M)

### Description

An end of terrace industrial/warehouse unit of portal frame construction with part brick and part profile clad elevations beneath a double skinned roof incorporating translucent roof lights.

The property comprises an open plan warehouse with concrete floor, roller shutter door of 4.1m (w) x 4.9m (h) and a height of 5 to underside of the haunch. The property also benefits from offices to both the ground and first floor, WC and kitchenette facilities.

Externally the property benefits from a loading apron and ample parking directly in front of the unit.

The property is to be refurbished.

## Location

Unit 13 is located on Alexandra Way approximately 0.5 miles from J9 of the M5 motorway. Alexandra Way forms the principal spine road for Ashchurch Business Centre.

Tewkesbury town centre lies approximately 1.5 miles to the west. Gloucester and Cheltenham approximately 10 miles south, Worcester (13 miles) and Birmingham approximately (45 miles) are to the north and Bristol is approximately (45 miles) south.

Ashchurch Business Centre is located to the east of J9 of the M5 with traffic light controlled access on to the A46 trunk road.

## Accommodation

Description	Sq Ft	Sq M
Unit 13, Ashchurch Business Centre	7,493	696.11

### Locations

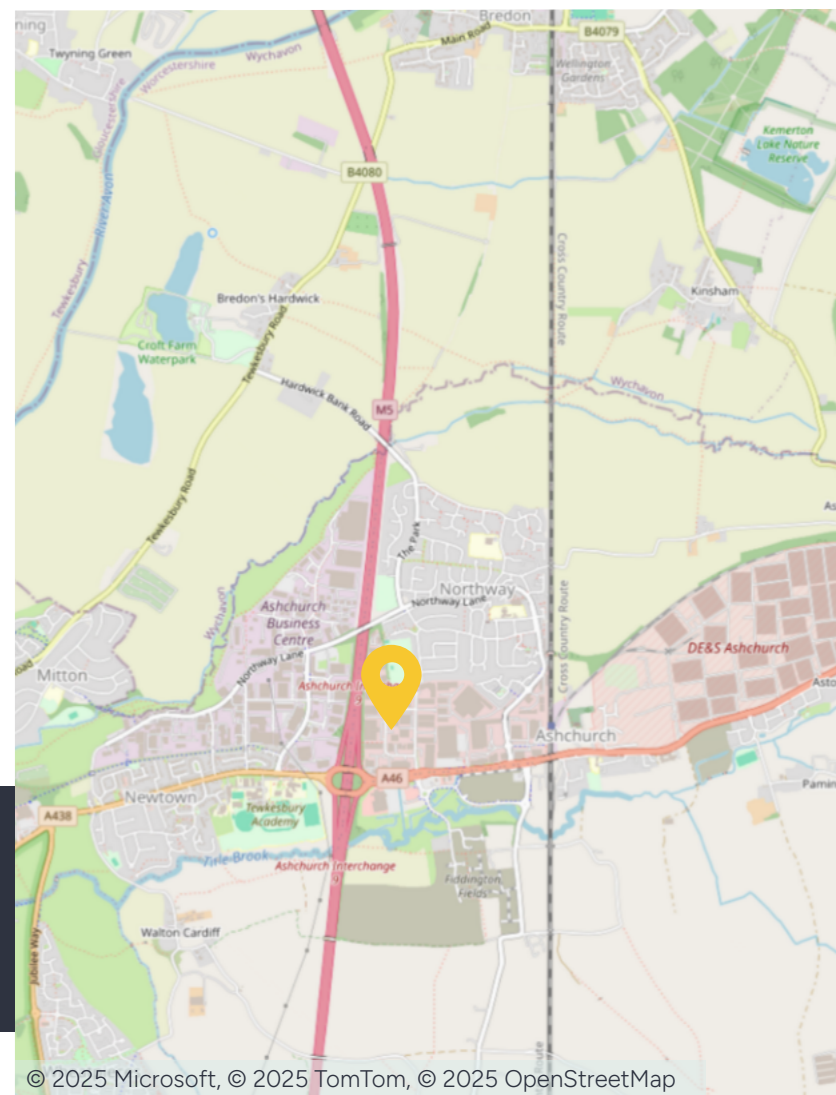
Cheltenham: 9.0 miles  
Gloucester: 12.2 miles  
Birmingham: 43.4 miles

### Nearest station

Ashchurch: 0.7 miles

### Nearest airport

Birmingham International: 45.4 miles



## Further information

### Guide Rent

On application.

### Tenure

The property is available on a new full repairing lease with terms to be negotiated.

### Business Rates

Rateable Value: £56,500  
2025/2026 rates payable 55.5p in the £.

Occupiers will be responsible for paying Business Rates direct to the local authority.

### Services

We are advised that all main services are connected to the premises.

We confirm that we have not tested any of the service installations and any occupier must satisfy themselves independently as to the state and condition of such items.

### EPC

The EPC rating is D-87.

### Legal Costs

Each party is to be responsible for their own legal costs.

### Service Charge

A service charge is payable in respect of the upkeep of the common parts. Figures to be confirmed.

### Fixtures & Fittings

Any fixtures and fittings not expressly mentioned within these particulars are excluded from the letting.

### Anti Money Laundering

The successful tenant will be required to submit information to comply with Anti Money Laundering Regulations.

### VAT

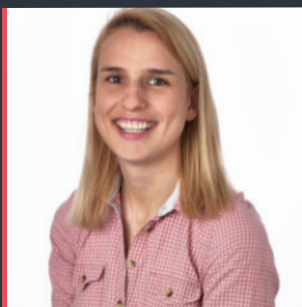
Unless otherwise stated, all prices and rents quoted are exclusive of Value Added Tax (VAT). Any intending tenant should satisfy themselves independently as to VAT in respect of this transaction.

### Viewings

By prior arrangement with the Fisher German or our joint agents Russell Property Consultants Ltd.



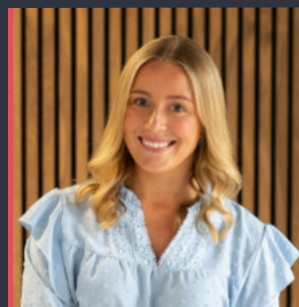
## Contact us



**Lauren Allcoat-Hatton**

01905 728 449

[lauren.allcoat-hatton@fishergerman.co.uk](mailto:lauren.allcoat-hatton@fishergerman.co.uk)



**Sophie Newton**

01905 728 444

[sophie.newton@fishergerman.co.uk](mailto:sophie.newton@fishergerman.co.uk)



Or our joint agents: Russell Property Consultants Ltd

**Josh Gunn**

07826 889 595

[josh@russellpc.co.uk](mailto:josh@russellpc.co.uk)

Please note: Fisher German LLP and its Joint Agents give notice that: 1. They have no authority to make or give any representation or warranty on any property whether on their own behalf or on behalf of their clients or otherwise. 2. They do not owe any duty of care to you and assume no responsibility for any statements, representations, warranties or otherwise made in the particulars and you should not rely on those in the particulars. 3. The particulars are produced in good faith are set out as a general guide only and do not constitute or form an offer or a contract or part thereof. 4. Any photographs, descriptions, plans, measurements, distances and any other details in the particulars are approximate estimates only taken as the property appeared at the time and should not be relied upon as factually accurate. 5. Fisher German assumes prospective purchasers/tenants have carried out inspections to satisfy themselves that the information in the particulars is correct.

Particulars dated July 2025. Photographs dated March 2025.



This brochure is fully recyclable