

VICTORIA HEALTH CENTRE OFFICES/ MEDICAL



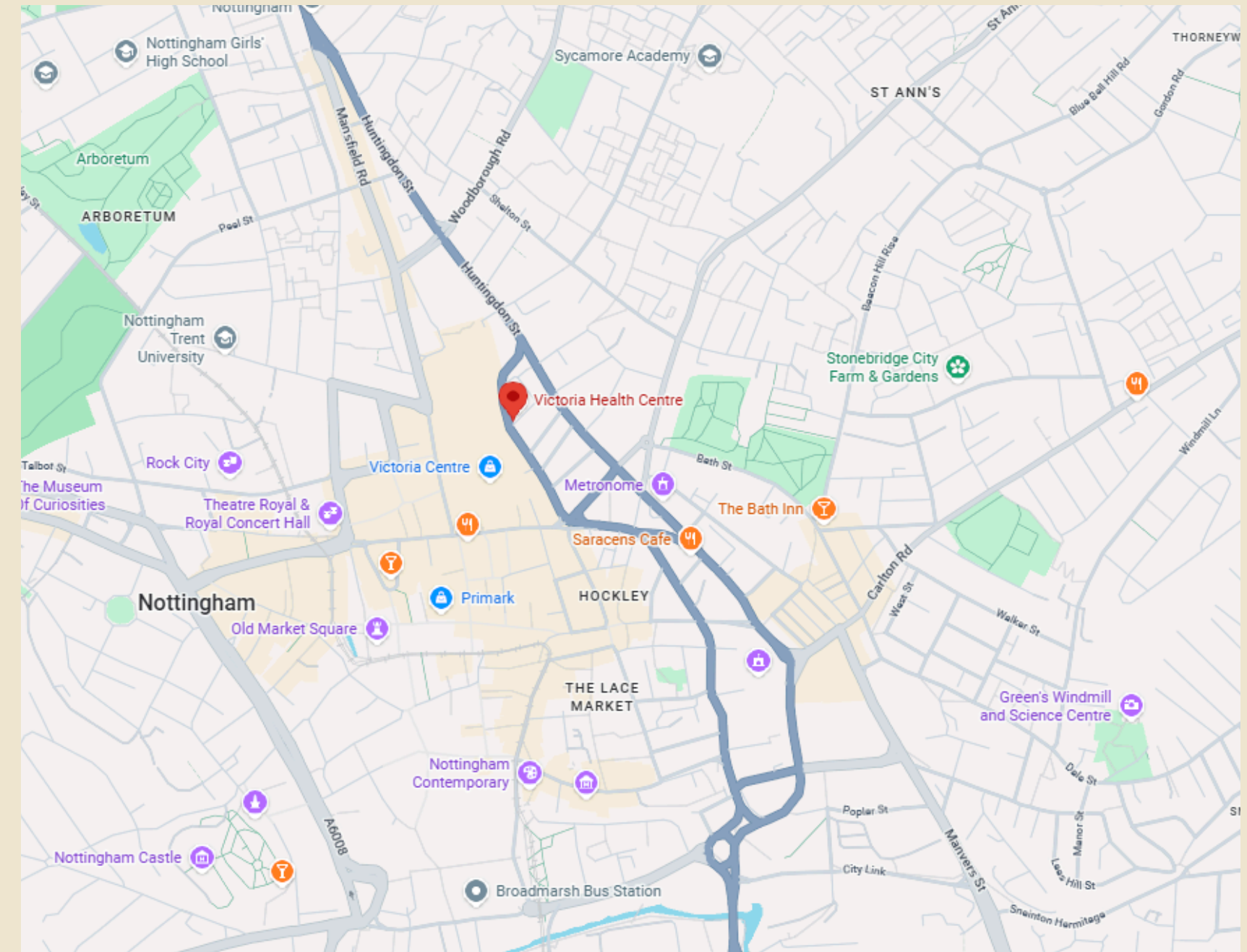
Victoria Health Centre, Glasshouse Street,
Nottingham, NG1 3LW

TO LET

YOUR PROPERTY PARTNER OF CHOICE

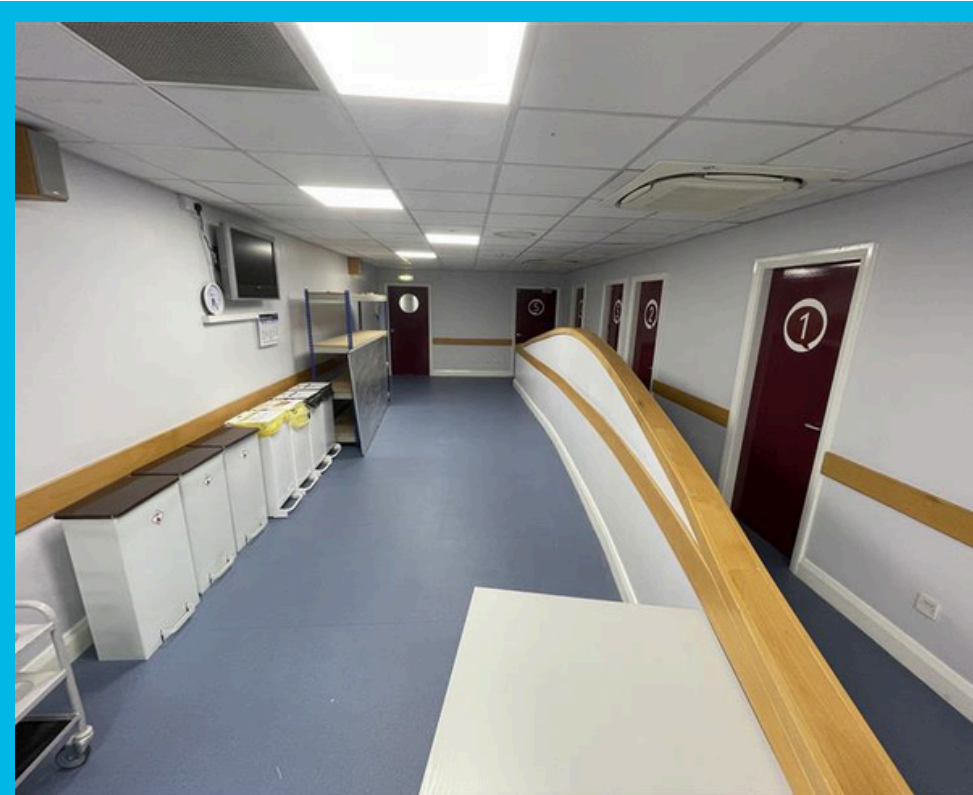
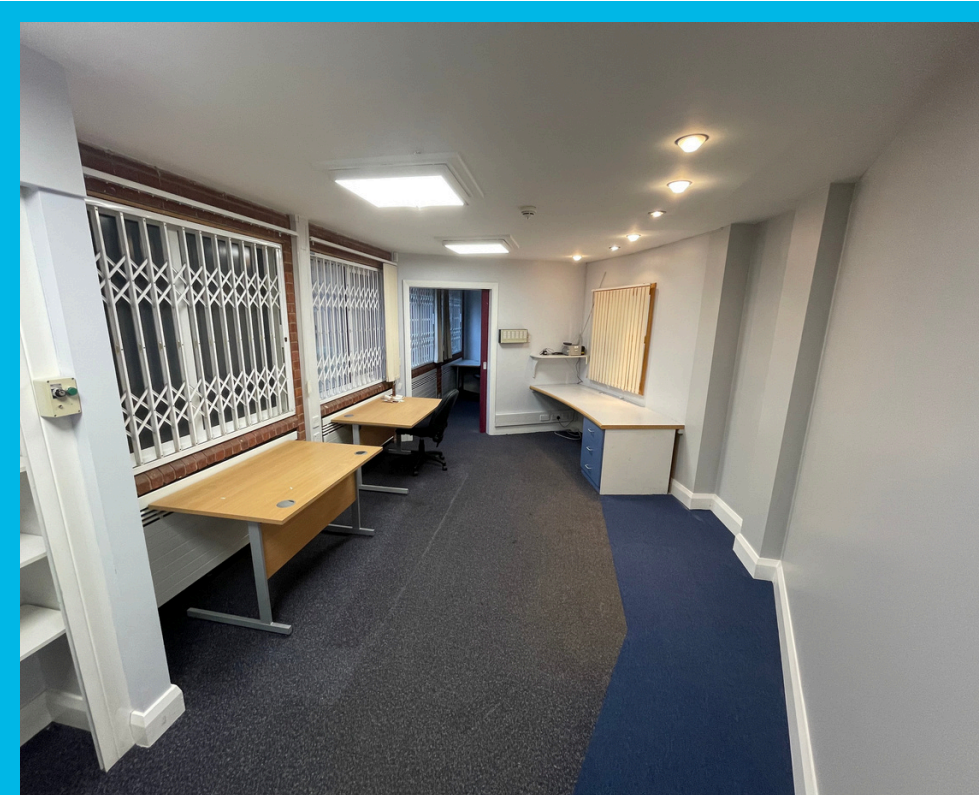
Ground Floor Medical / Office Accommodation available in a central Nottingham location

- Available Immediately
- Suitable for medical, clinical, office or professional uses
- Secure access with rear gated staff car parking
- Strong connectivity Via A60, A610 and A453 with links to the M1 motorway
- Located in a recognised medical and professional setting
- Ground floor office accommodation
- Excellent motorway access
- <https://w3w.co/supply.activism.cabin>



TO LET

Use Class (E)



PROPERTY OVERVIEW

DESCRIPTION

Ground floor office accommodation is available to let within Victoria Health Centre, offering office and clinical space within an established healthcare building. Internally, the accommodation provides a series of smaller consultancy or treatment rooms alongside staff office accommodation and a dedicated reception. The layout is well suited to a medical, therapy, counselling, or professional occupiers with flexibility for reconfiguration if required. The property benefits from access to a secure rear car park for staff use.

LOCATION

Victoria Health Centre is prominently located on Glasshouse Street in Nottingham city centre, within close proximity to a wide range of amenities. The property benefits from excellent transport connectivity, with Nottingham Railway Station within walking distance providing direct services to major cities and regional centres. The area is well served by Nottingham's tram and bus network, and there is easy access to the A60, A610, and A453, linking to the wider city and the M1 motorway

SUMMARY

Available Size	NRA 150.80 sq.m. NIA 132.83 sq.m.
Rent	POA
Business Rates	Upon Enquiry
Service Charge	Upon Enquiry Excluding Business Rates
Car Parking	Car Parking Available
EPC Rating	D

ACCOMMODATION

The accommodation comprises the following areas

Name	NRA (sq.m)	NIA (Sq.m)	Availability
Ground Floor	150.80	132.83	Available
Total	150.80	132.83	





VICTORIA HEALTH CENTRE OFFICES/ MEDICAL

Viewing & Further Information



Daniel Clinch
07947 990224
daniel.clinch@alignpropertypartners.co.uk



Julie Anderson
07968 799 734
julie.anderson@alignpropertypartners.co.uk

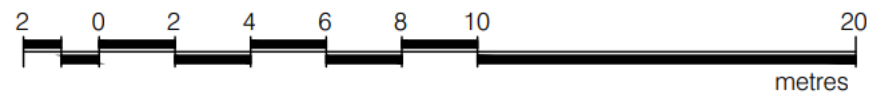
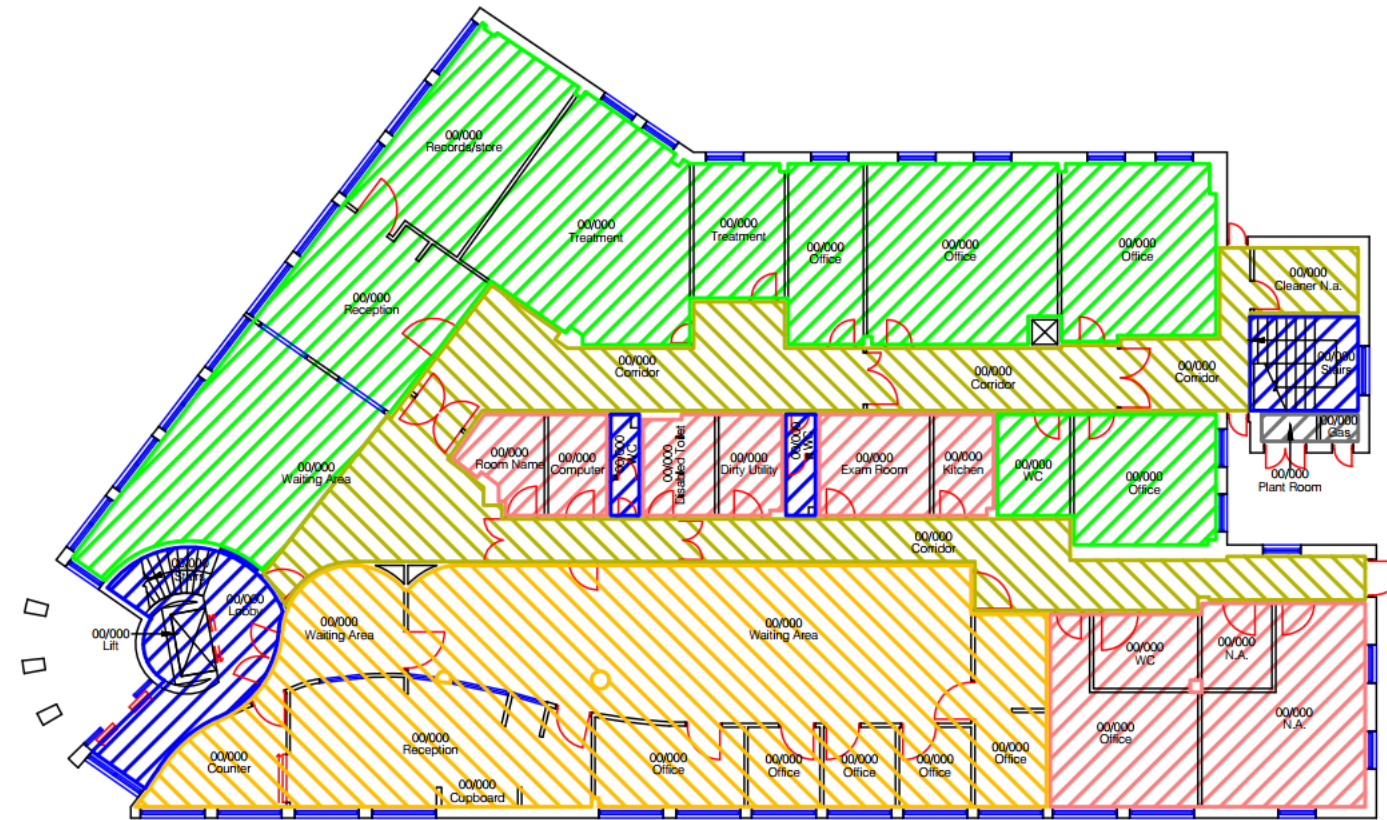
View Properties [Here](#)





Approximate Direction North

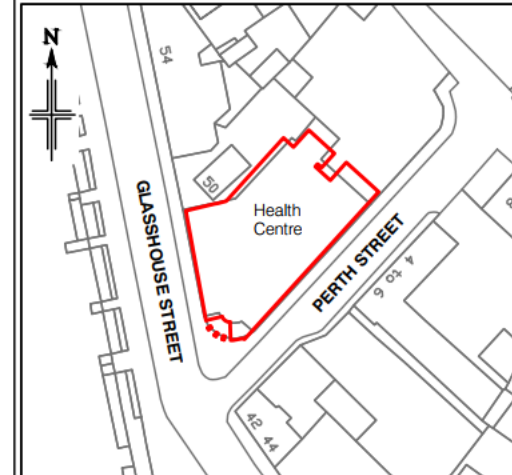
	01110	NIA	171.19 m ²
	NHSPS Vacant Liability	NIA	132.83 m ²
	NHSPS Sessional Space	NIA	74.45 m ²
	NHSPS Shared Area	NIA	96.14 m ²
	NHSPS Common Parts	GIA	28.51 m ²
	NHSPS Retained Area	GIA	1.82 m ²



Ground Floor*
 GEA 557.26 m²
 GIA 523.09 m²
 NIA 484.14 m²
 *Whole floor areas, not the sum of parts listed above

RECORD

This Drawing/ Specification is the property of NHS Property Services, and may not be reproduced or disclosed to a third party in any form without the written permission of NHS Property Services.
 ANY ROOM AREAS SHOWN ARE INDICATIVE ONLY.
 ALL MEASUREMENTS ARE TO BE VERIFIED ON SITE.



Location Plan

Scale 1:1250

Building Outline

Care should be taken when drawings are printed to avoid image distortion.

© Crown copyright and database rights 2024 OS AC0000810047.
 Information produced by HM Land Registry. The Polygons, (including the associated geometry, namely x, y co-ordinates) are subject to Crown copyright and database rights 2024 and are reproduced with the permission of Ordnance Survey

You are granted a non-exclusive, royalty free, revocable licence solely to view the Licensed Data for non-commercial purposes for the period during which NHS Property Services makes it available. You are not permitted to copy, sub-license, distribute, sell or otherwise make available the Licensed Data to third parties in any form. Third party rights to enforce the terms of this licence shall be reserved to Ordnance Survey.

Notes:

12/11/2024	AMENDED	R04
25/01/2022	AMENDED	R03
Date	Comments	Rev.



Property Services

Site Address

VICTORIA HEALTH CENTRE
 GLASSHOUSE STREET
 NOTTINGHAM
 NG1 3LU

Site	Orig.	Role	Level	Type	Rev.
10007724	GL	CAD	GF	FP	R04

Floor/Level GROUND FLOOR

Scale 1:200 @ A3

Date MARCH 2009