



Ayers & Cruiks
COMMERCIAL

Kingswood House, 58-64 Baxter Avenue, Southend-on-Sea,

SS2 6BG

To Let | 3,590 sq ft

Second floor office suites with air con, suspended ceiling with lights, double glazing and a kitchenette.

Kingswood House, 58-64 Baxter Avenue, Southend-on-Sea, SS2 6BG

Summary

- Rent: £44,875 per annum
- Business rates: Interested parties are advised to confirm the rating liability with Southend Council.
- VAT: To be confirmed
- Legal fees: Incoming tenant is liable for both parties legal costs
- EPC: D (85)
- Lease: New Lease

Contact & Viewings

Neil Burroughs
01702 608035
neil@ayerscruiks.co.uk

Cameron Cruiks
01702 608045
cameron@ayerscruiks.co.uk

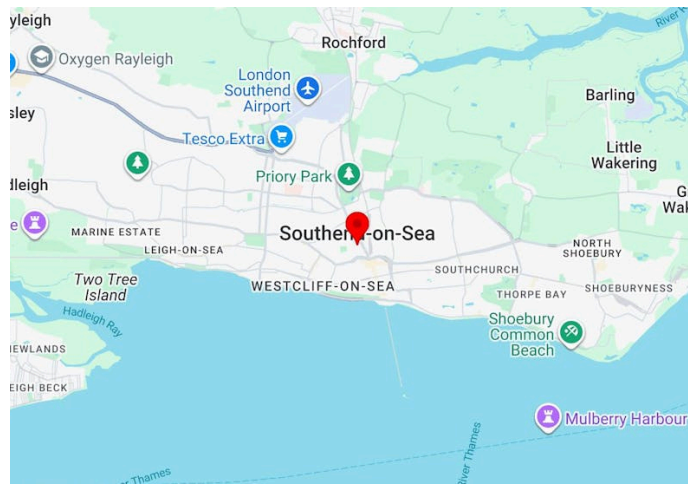
Darrell Clarke
01702 608039
darrell@ayerscruiks.co.uk

Bradley Hair
01702 608057
bradley@ayerscruiks.co.uk

Offices

86-88 Baxter Avenue,
Southend-On-Sea,
Essex,
SS2 6HZ
Tel: 01702 343060

Burgundy Court
64/66 Springfield Road,
Chelmsford,
Essex,
CM2 6JY
Tel: 01245 202555



Key Points

- Located in Office District
- Close to all local amenities
- Close to mainline train station
- High spec office suite
- New lease available

Description

The office suite is on the first floor of a prestigious building, featuring air conditioning, a suspended ceiling with lights, double glazing, and a kitchenette. Each floor has WC facilities, access to two passenger lifts, and allocated parking.

Location

The office complex is located on Baxter Avenue, parallel to Victoria Avenue, the town's main office area.



It is close to Southend Victoria and Southend Central train stations, which have direct routes to London (Liverpool Street and Fenchurch Street). The office is also easily accessible by bus routes and near the A13 and A127 roads.

Accommodation

Floor/Unit	Description	sq ft	sq m	Availability
Suite	First Floor Rear Suite	3,590	333.52	Available

Viewings

Strictly by prior appointment via landlords appointed agents Ayers & Cruiks

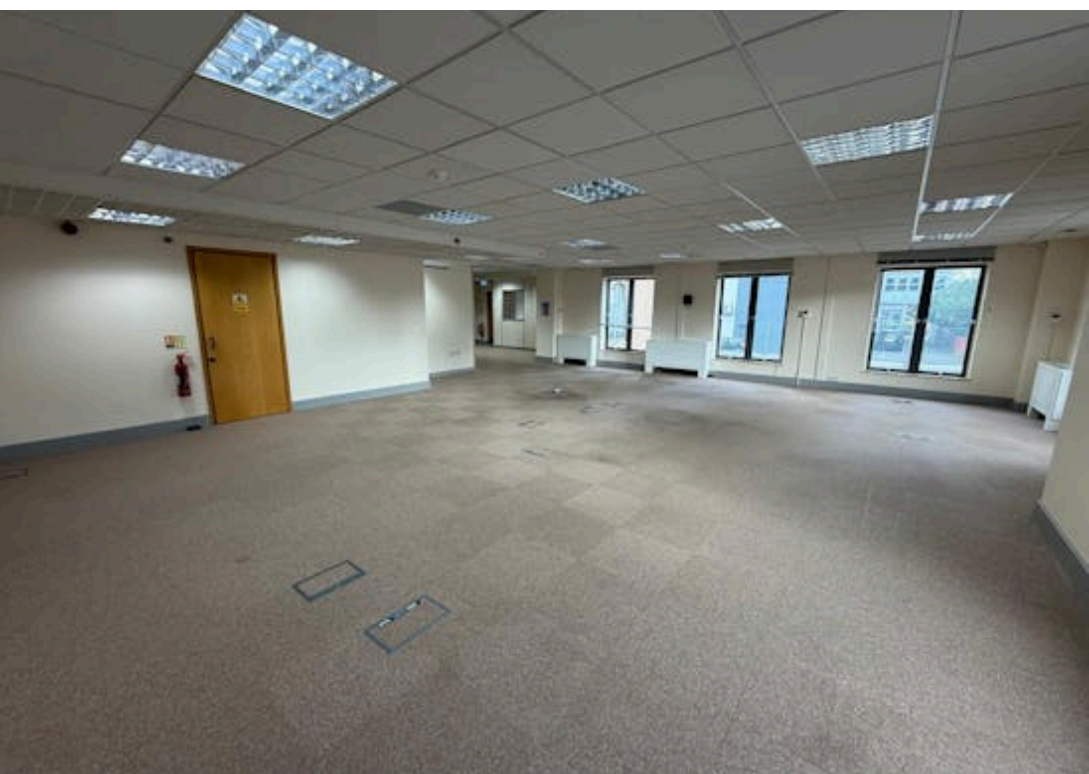
Terms

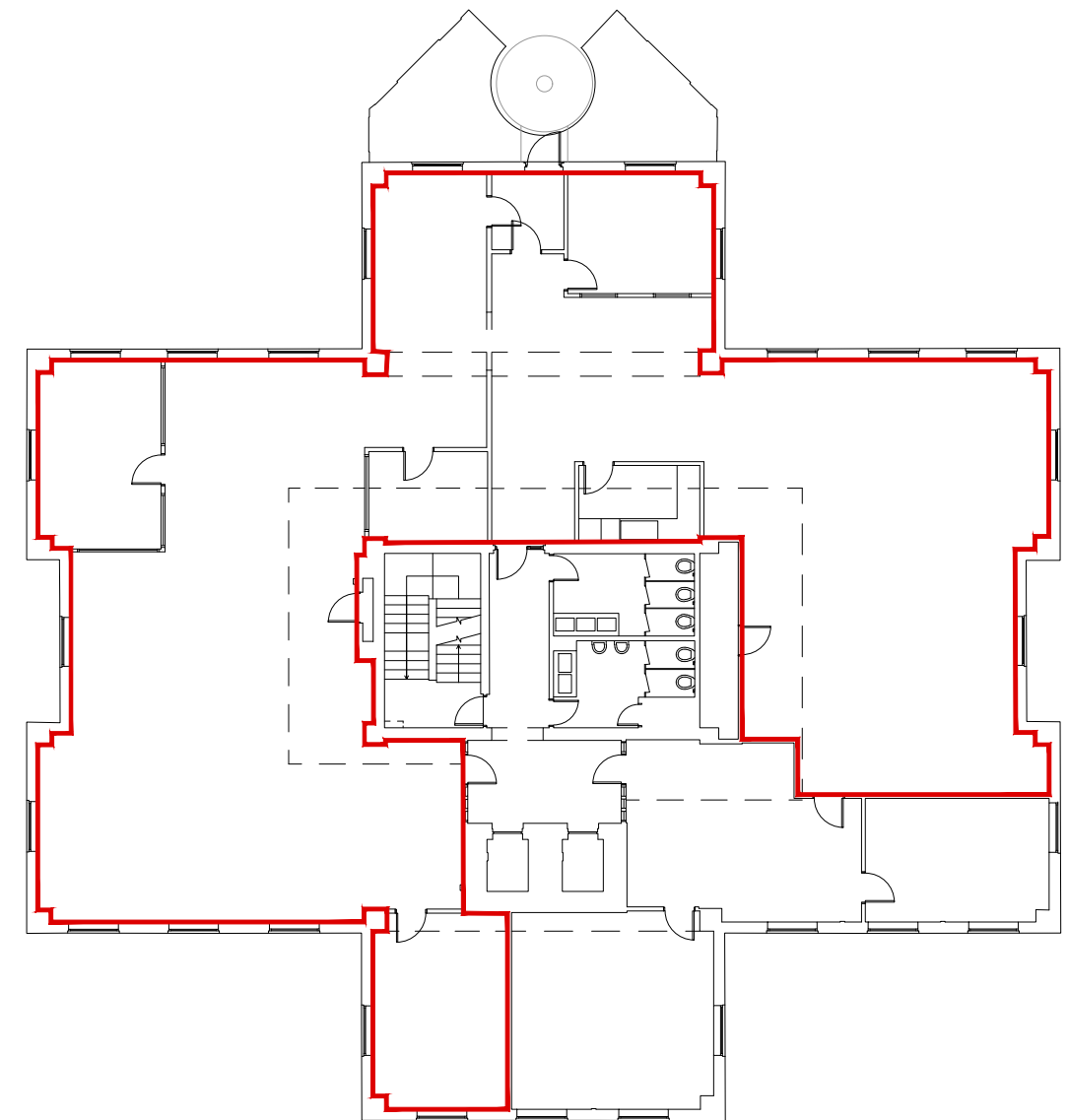
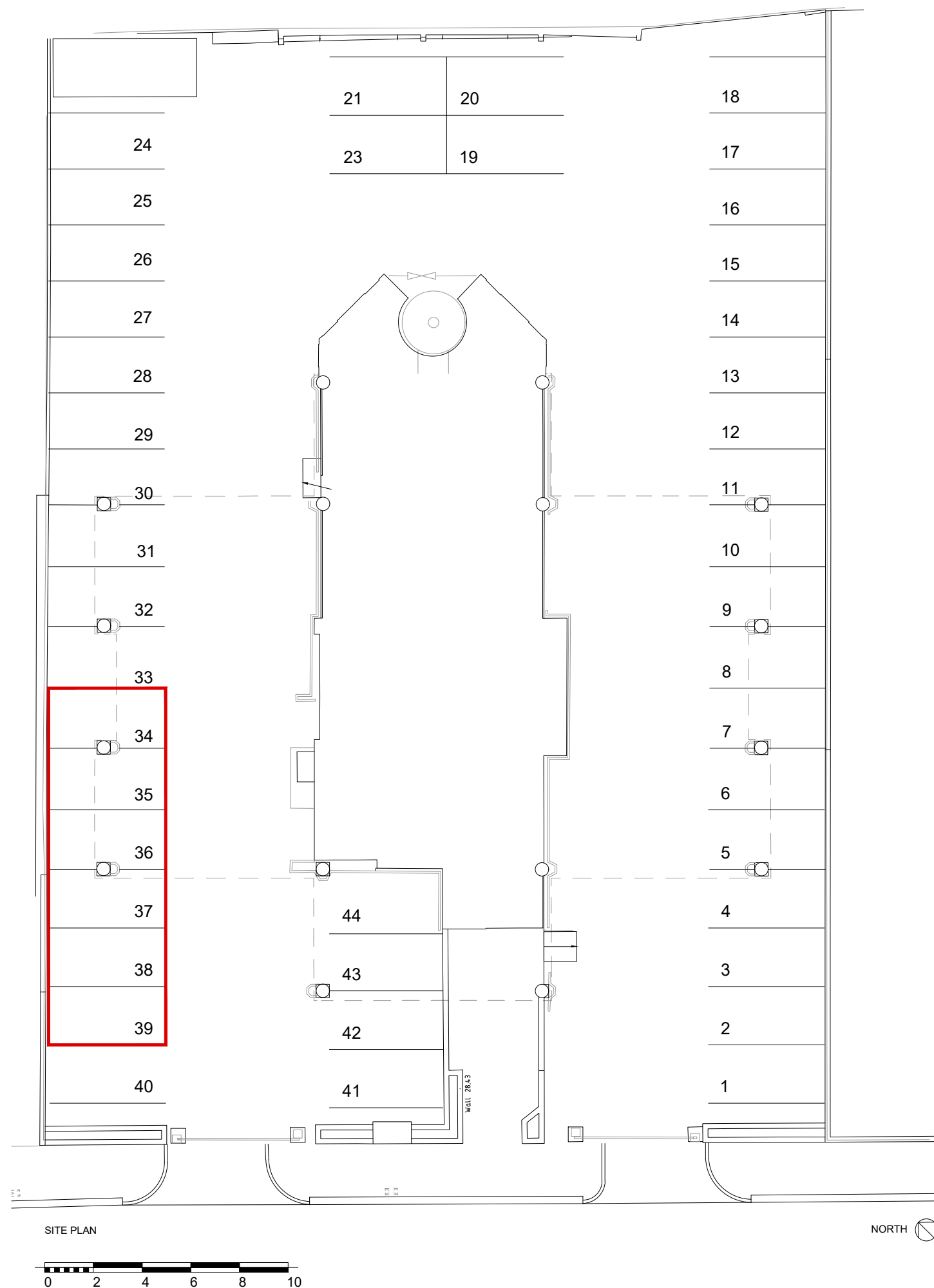
The premises are available to let upon a new full repairing and insuring lease for a term to be agreed.

Rent

£44,875 Per Annum Exclusive







Kingswood House
Baxter Avenue
Southend-on-Sea
SS2 6BG

1:200 @A3