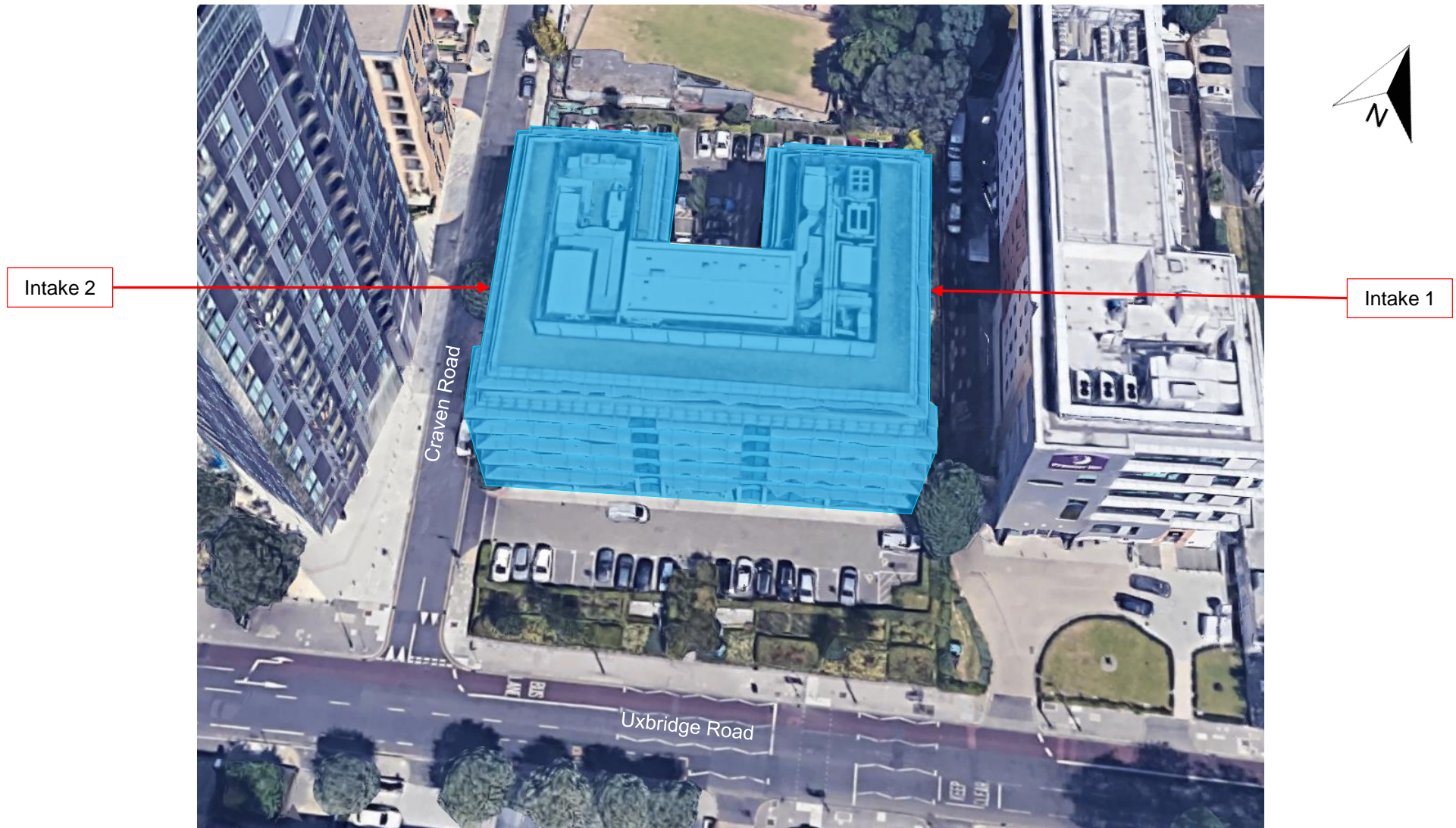
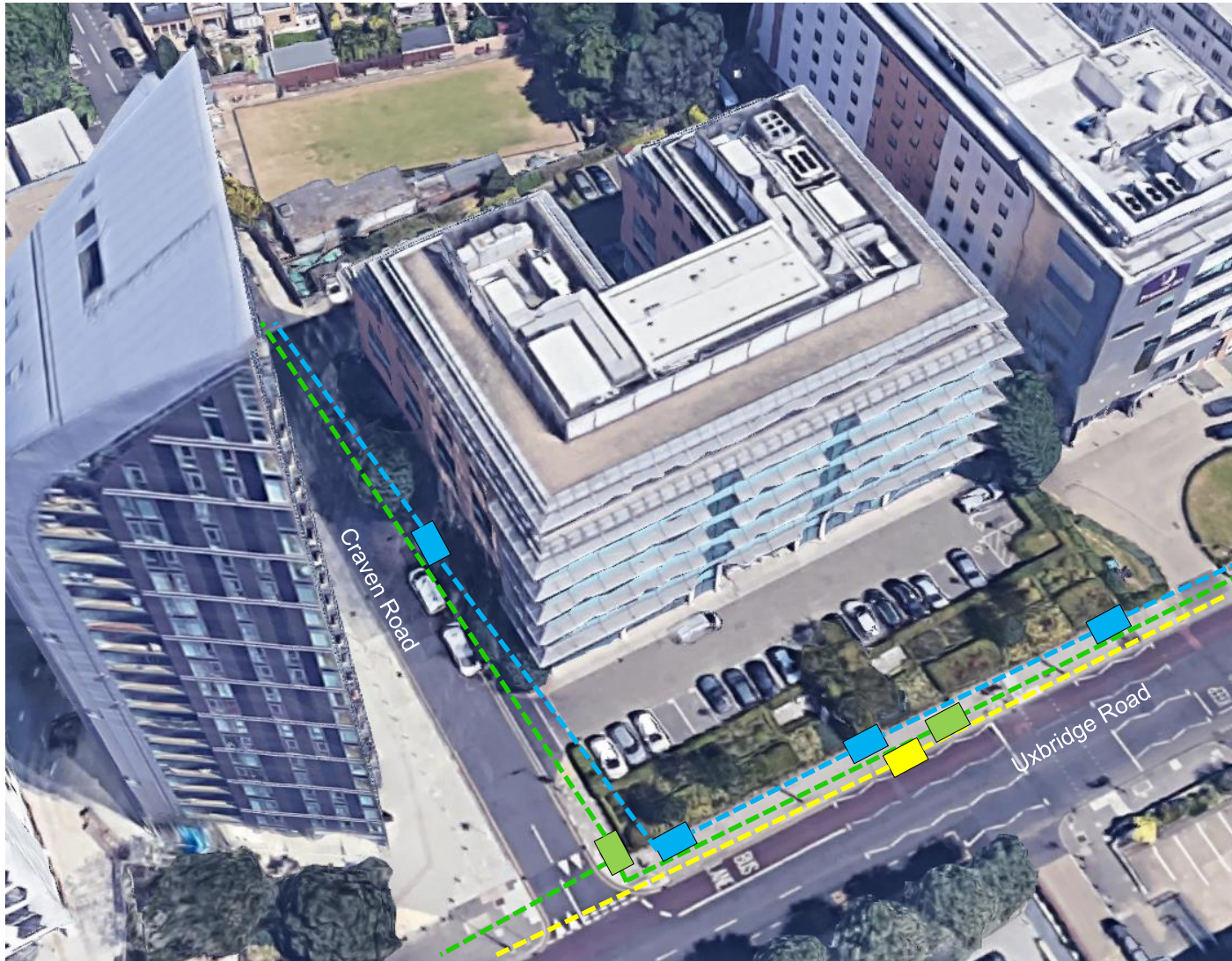


Picture Summary:

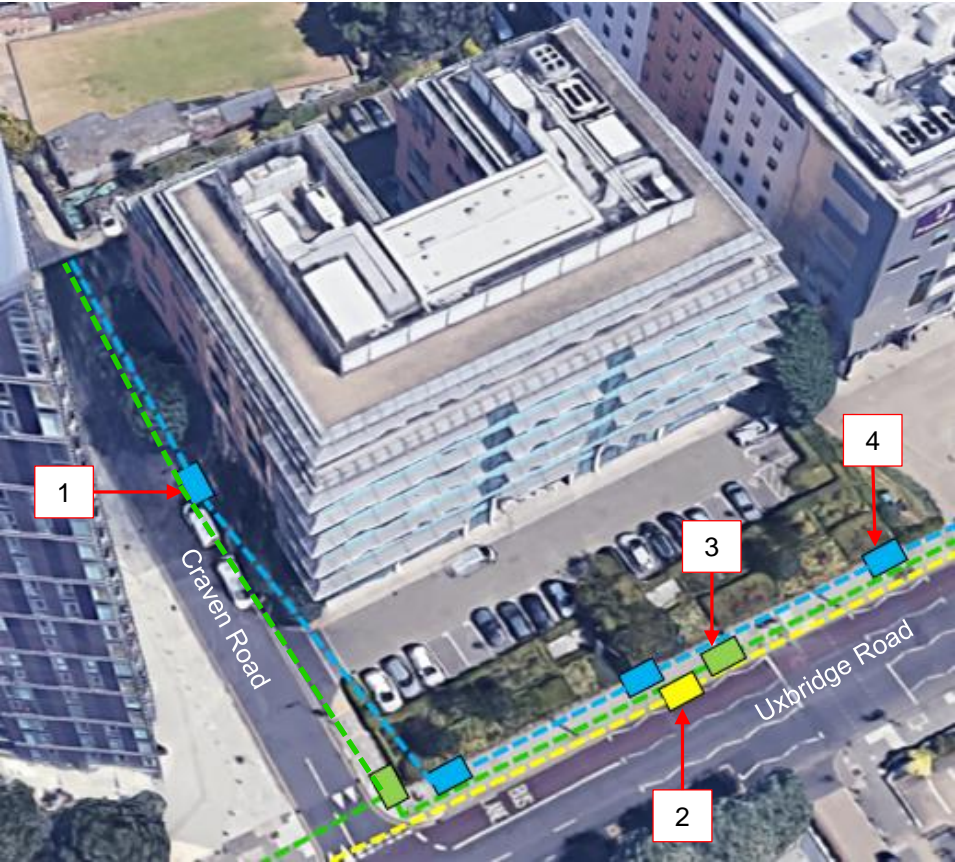
Ealing Gateway
26-30 Uxbridge Road
London, W5 2AU







- Indicative Virgin duct route -----
- Indicative BT Openreach duct route -----
- Indicative Vodafone (Cable & Wireless) duct route -----



- Virgin chambers ■
- BT Openreach chambers ■
- Vodafone (Cable & Wireless) chambers ■



BT Openreach chamber



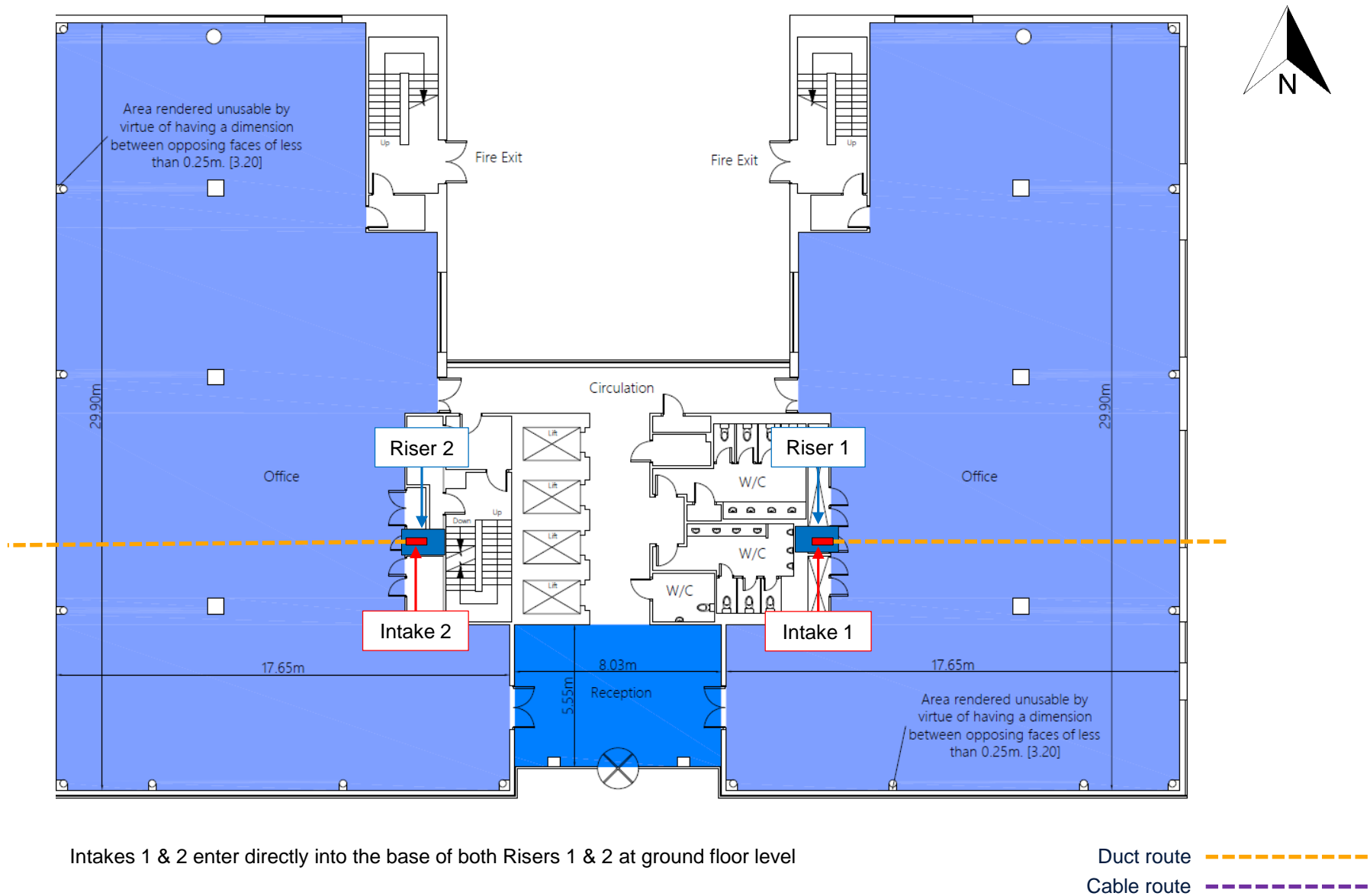
Vodafone (Cable & Wireless) chamber



Virgin chamber



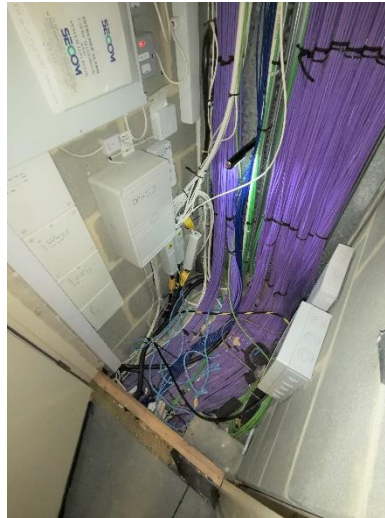
BT Openreach chamber



Intakes 1 & 2 enter directly into the base of both Risers 1 & 2 at ground floor level



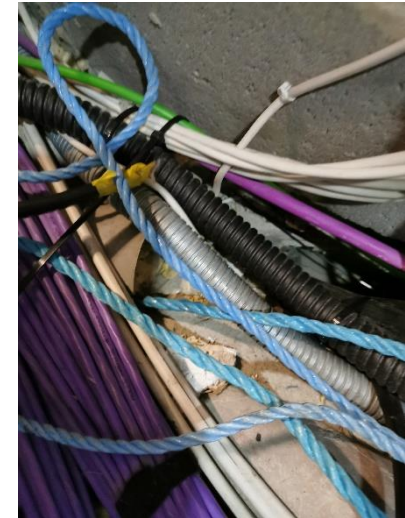
Secure location



Looking into Intake 1



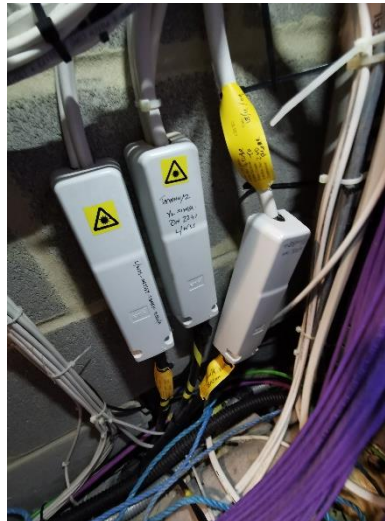
Spare 100mm duct



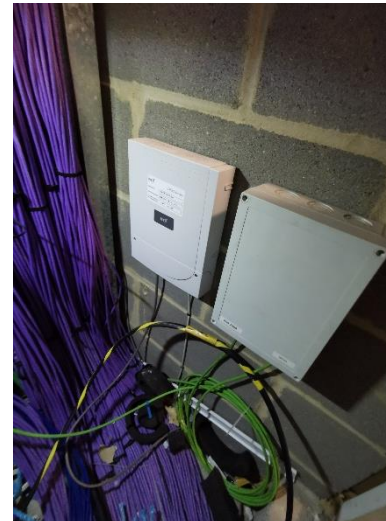
Cables conceal ducting



BT Openreach copper equipment



BT Openreach fibre equipment



Virgin fibre equipment (right)

The intake ducts enter into the base of Riser 1 located within a tenant's data centre. The cupboard is heavily congested with cables and ducts have been concealed. It is believed that a total of six 100mm ducts could enter at this location but it was not possible to confirm this during the survey



Secure location



Looking into Intake 2



Intake 2 ducts

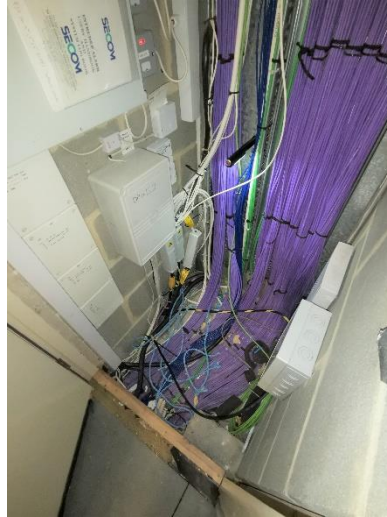


Intake 2 ducts

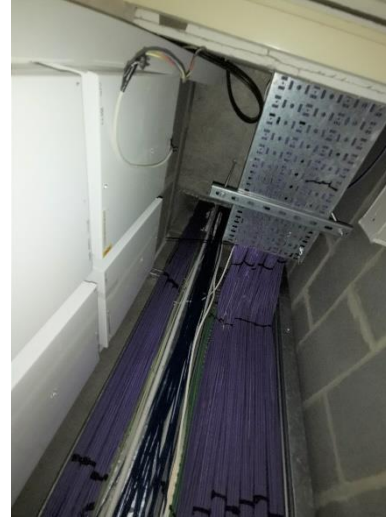
The ducts at Intake 2 enter into the base of Riser 2. The intake is currently not used and offers 100% spare capacity for the future installation of communications cabling



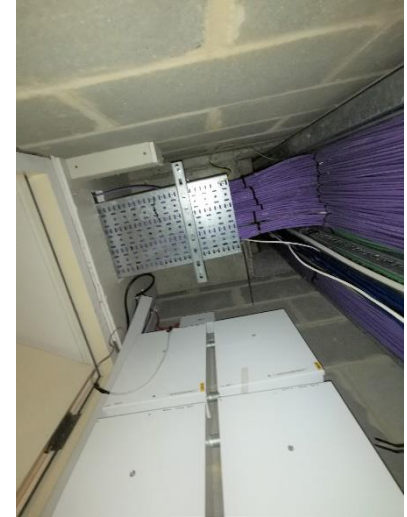
Secure location



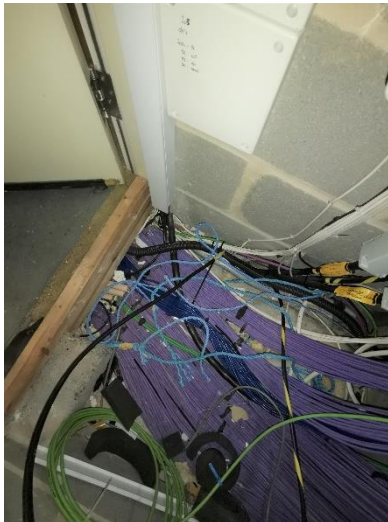
Looking down



Looking up



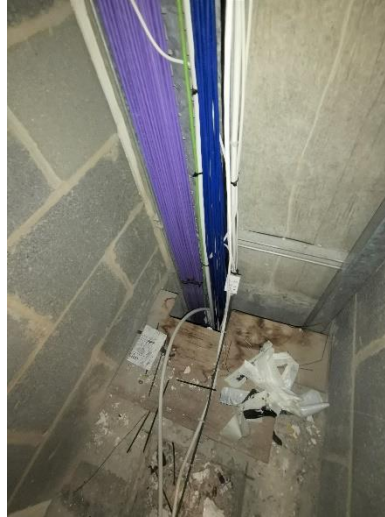
Access to the suspended ceiling



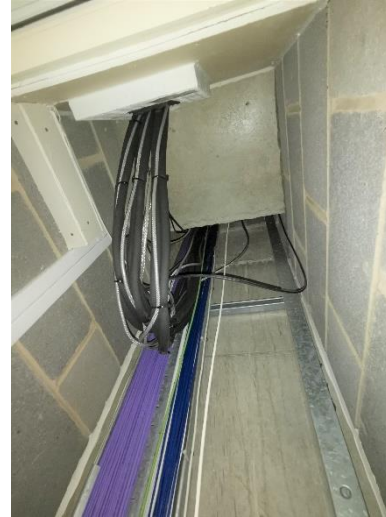
Access to the raised floor



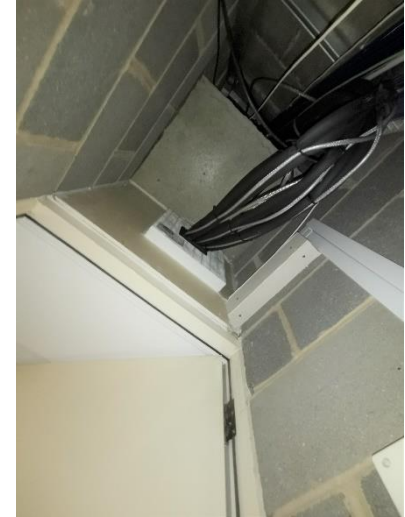
Secure location



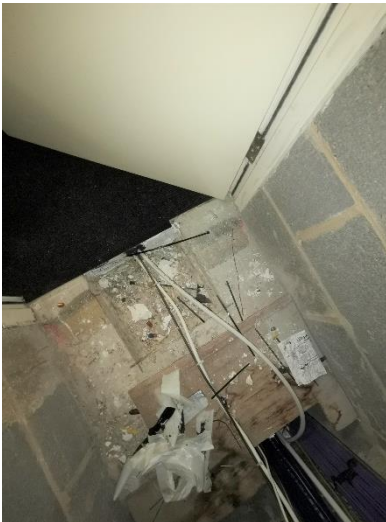
Looking down



Looking up



Access to the suspended ceiling



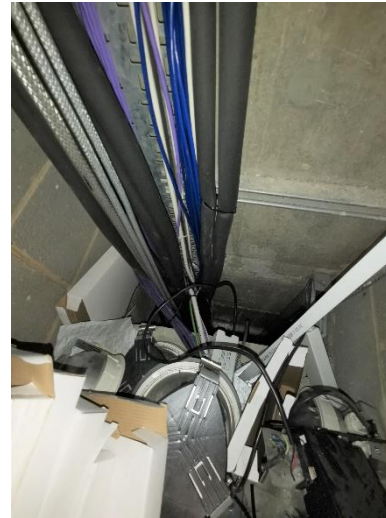
Access to the raised floor



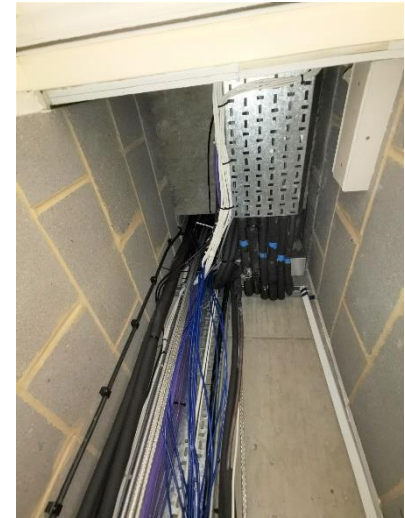
Secure location



View into the riser cupboard



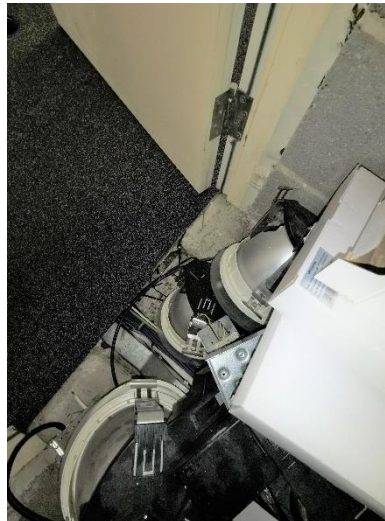
Looking down



Looking up



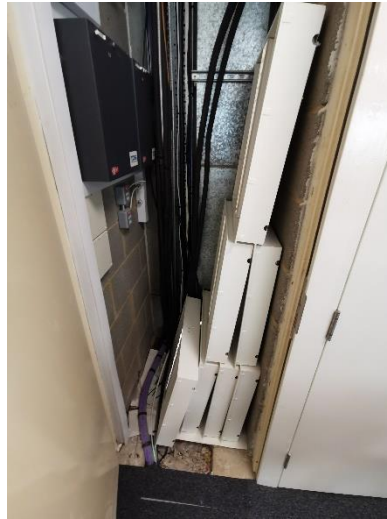
Access to the suspended ceiling



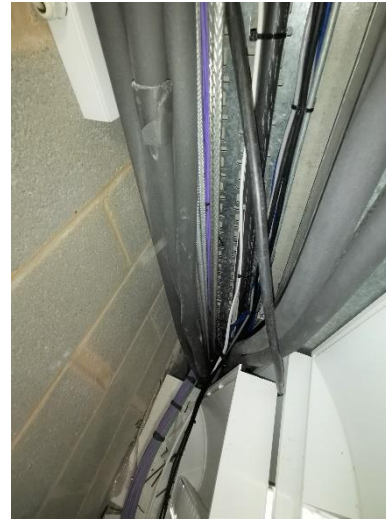
Access to the raised floor



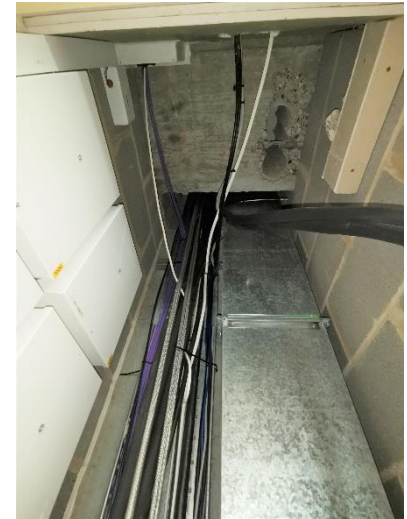
Secure location



View into the riser cupboard



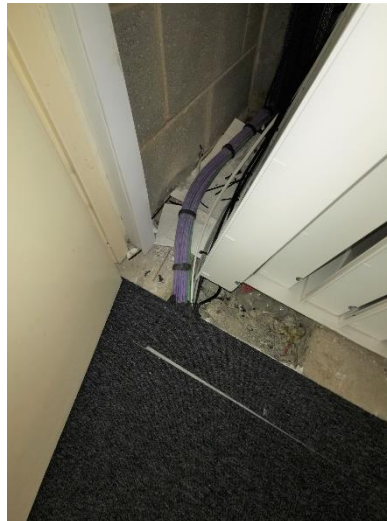
Looking down



Looking up



Access to the suspended ceiling



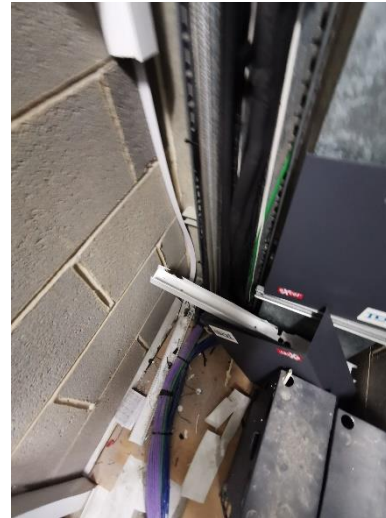
Access to the raised floor



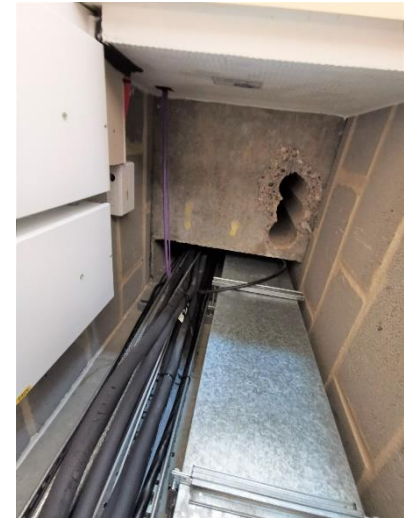
Secure location



View into the riser cupboard



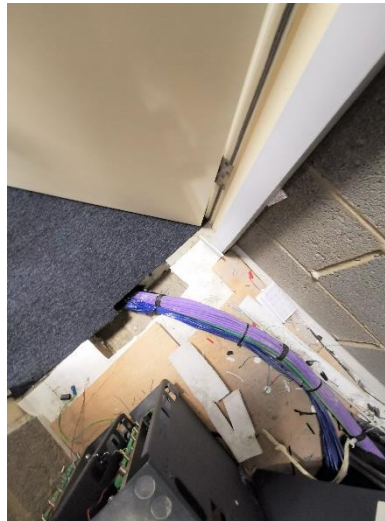
Looking down



Looking up



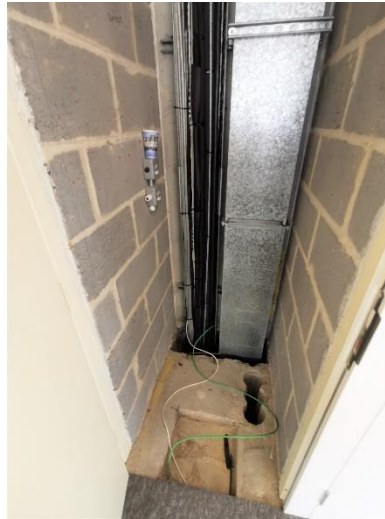
Access to the suspended ceiling



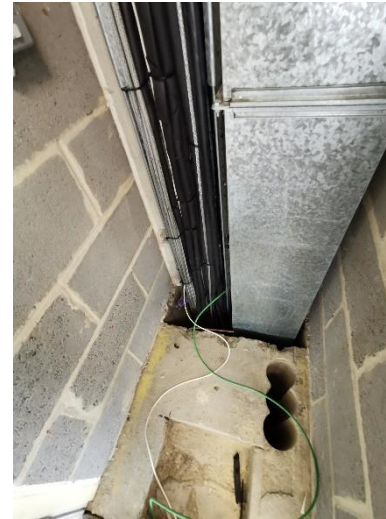
Access to the raised floor



Secure location



View into the riser cupboard



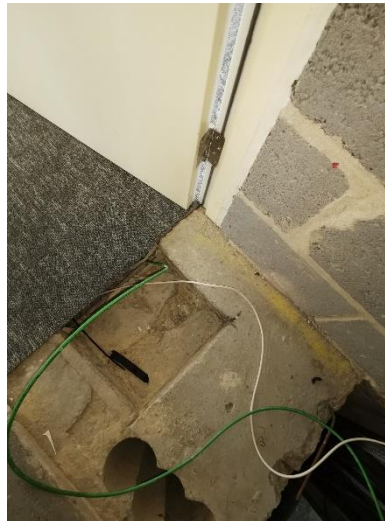
Looking down



Looking up



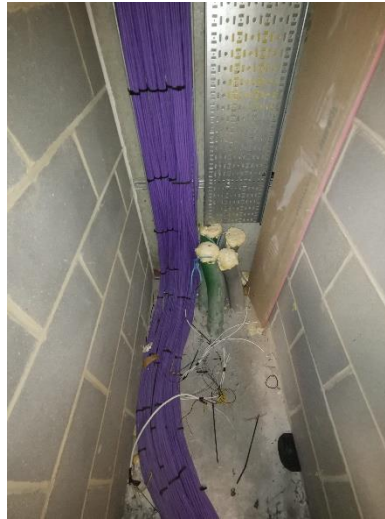
Access to the suspended ceiling



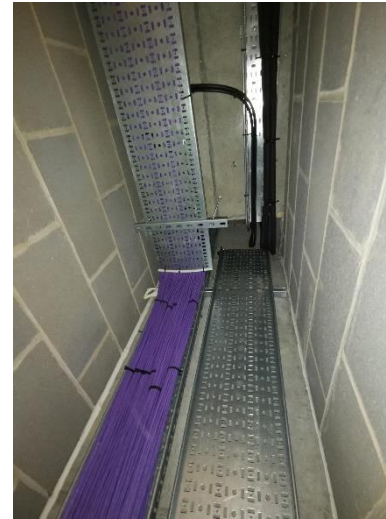
Access to the raised floor



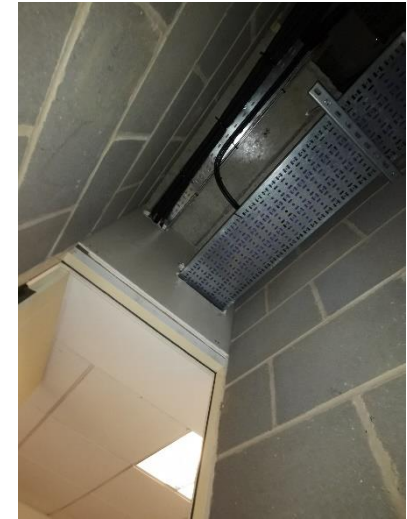
Secure location



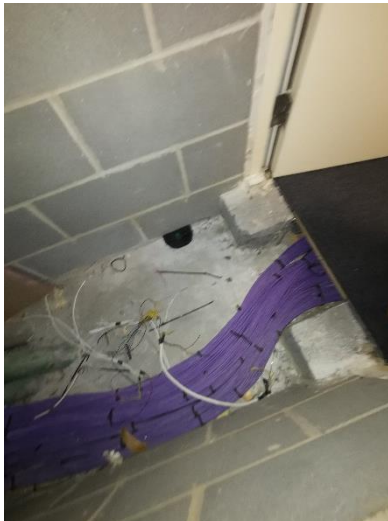
Looking down



Looking up



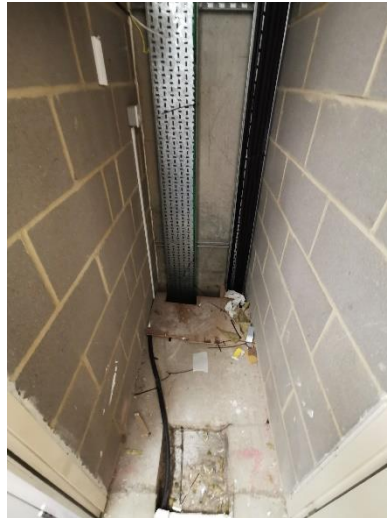
Access to the suspended ceiling



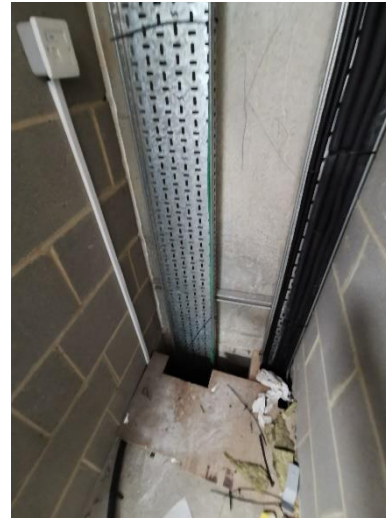
Access to the raised floor



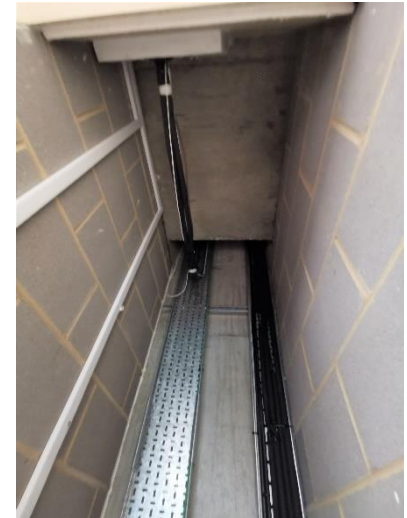
Secure location



View into the riser cupboard



Looking down



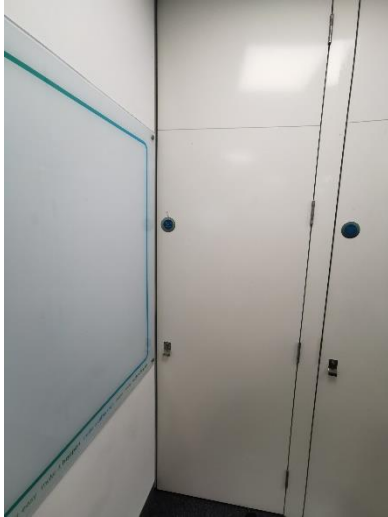
Looking up



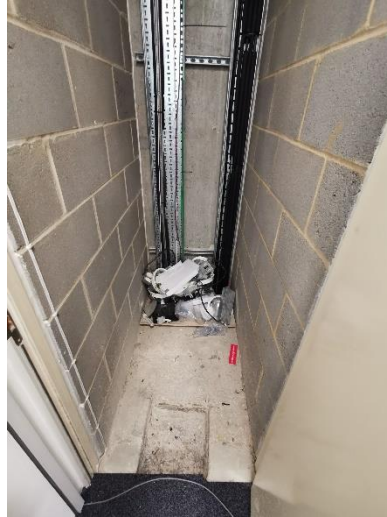
Access to the suspended ceiling



Access to the raised floor



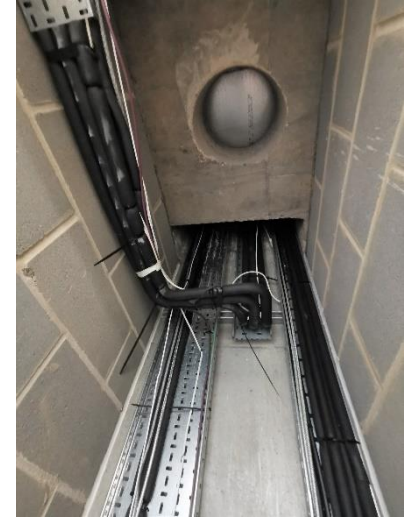
Secure location



View into the riser cupboard



Looking down



Looking up



Access to the suspended ceiling



Access to the raised floor



Secure location



View into the riser cupboard



Looking down



Looking up



Access to the suspended ceiling



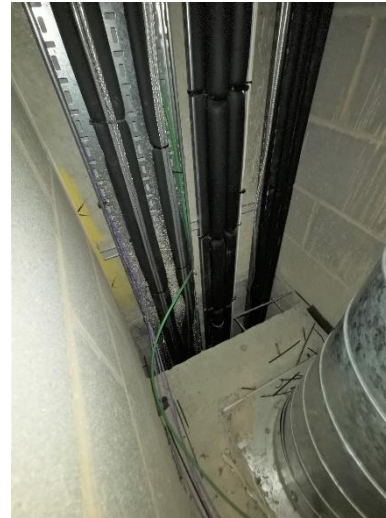
Access to the raised floor



Secure location



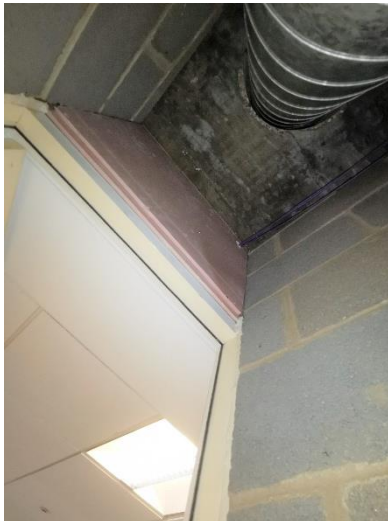
View into the riser cupboard



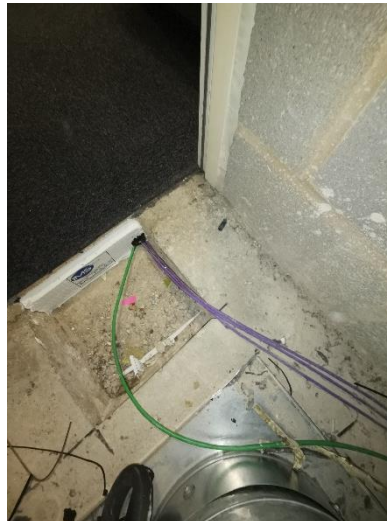
Looking down



Looking up



Access to the suspended ceiling



Access to the raised floor



Secure location



View into the riser cupboard



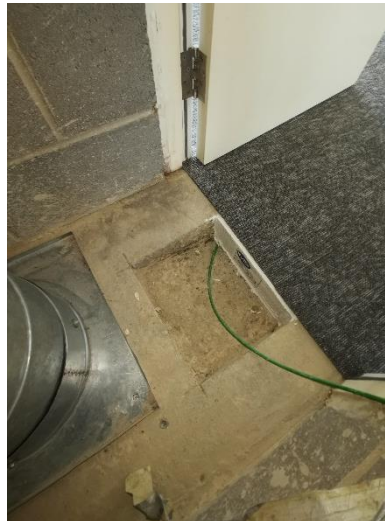
Looking down



Looking up



Access to the suspended ceiling



Access to the raised floor



Available rooftop space for future communication equipment installations



Un-badged satellite dish and aerals

The main rooftop is enclosed. Communications equipment is terminated above plant equipment at high level