

17CC

LABS

17 COLUMBUS COURTYARD

E14 4DA



MOVE-IN READY,
INNOVATION
DOESN'T WAIT

256,000 SQ FT OF WATERFRONT LABORATORY AND OFFICE SPACE

17CC LABS provides an outstanding opportunity for ambitious and innovative businesses to be part of London's fastest growing science cluster in Canary Wharf.

With highly specified fully fitted laboratory suites from 1,500 sq ft to larger shell and core laboratory and office space.

Available from H2 2026.





WHERE INNOVATION THRIVES

17CC LABS is future-focused, connecting people, places and ideas. Designed to facilitate and promote collaboration with multiple communal spaces, the building provides an inspiring innovation ecosystem, supporting scientific development and fostering growth.

The building ensures all daily needs are met, with a specific focus on science and research requirements.



DESIGNED FOR SCIENCE

High specification
CL2 labs



256,000 SQ FT OF LAB SPACE

With single floorplates up to
24,000 sq ft designed around
a central core



FLEXIBLE WORKSPACE

Delivering a variety of size
and specifications from shell
and core to fitted laboratory
accommodation



CREATED FOR COLLABORATION

High quality breakout spaces
for informal working, 6 bookable
meeting rooms and an event
area for knowledge sharing



CONNECTED TO EVERYWHERE

Excellent transport links
across the capital
and beyond



ON-SITE CAFÉ

A relaxing setting
for collaboration



URBAN HUB

Located in the centre of the
Canary Wharf science cluster,
London's most forward
thinking neighbourhood



EXTENSIVE LOCAL AMENITIES

Canary Wharf is a hive of
activity, providing a wealth
of local bars, restaurants
and shops

Collaboration is at the core of 17CC LABS, with social, breakout, and event spaces curated to facilitate and promote knowledge sharing.



Delivering adaptable laboratory spaces, in either fully fitted or shell and core condition, 17CC LABS appeals to early and late stage companies alike.



WELCOME TO LONDON'S NEWEST INNOVATION HUB



BASE BUILD SPECIFICATION



CL2 base design
to 60:40 lab to
office split



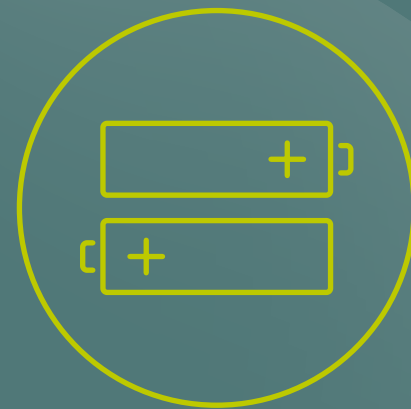
Response Factor
<2 in lab areas



Floor-loading
4+1kN/m²



6 Bookable
meeting rooms



Dual power
supply N+N



Slab to slab
height of 4.1m
to 4.65m



Dedicated
waste storage



1 Dedicated
goods lift



Resilient fibre
connection



Generous breakout
and amenity spaces
including on-site café



4.5MVA of
power from
2 substations

FULLY FITTED RESEARCH AND DEVELOPMENT SPACE

The ground and first floors of 17CC LABS will be fully fitted CL2 labs and write-up space, starting from 1,500 sq ft. This turnkey space will be ideal for small science and research focused companies looking for immediate occupation.

The upper floors will offer CAT A or shell and core laboratory space, ideal for larger companies who want to custom design their lab space.



Labs designed to minimum 6 air changes per hour



Vulcathene drainage with dedicated drainage points



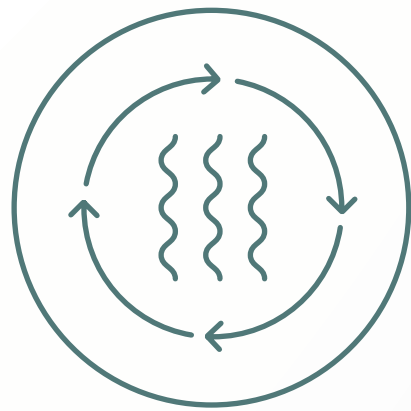
Provision of piped lab gases



Shared equipment room



Fully fitted / write-up space



Provision for recirculating fume cupboards



Benching and shelving



Chemical resistant vinyl flooring



Eye wash station

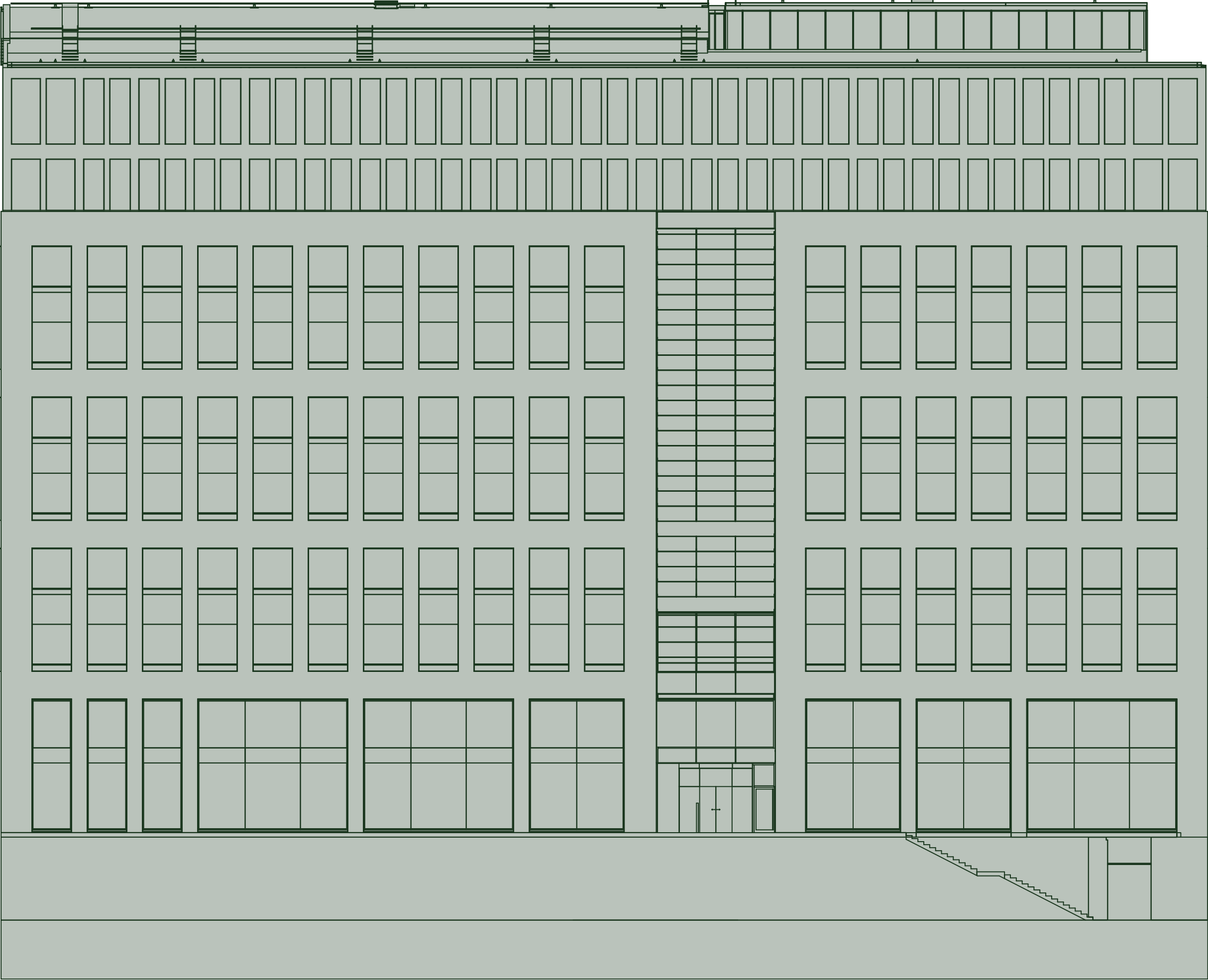


Lab sink and hand wash



SCHEDULE OF AREAS

LEVEL	SQ FT	SQ M	
09	18,505	1,719	Shell and core
08	23,893	2,219	Shell and core
07	23,896	2,220	Shell and core
06	23,893	2,219	Shell and core
05	23,893	2,219	Shell and core
04	23,893	2,219	CAT A
03	23,893	2,219	CAT A
02	23,818	2,212	CAT A
01	23,380	2,172	Fully fitted
G	22,272	2,069	Fully fitted
LG	15,696	1,458	
B	8,931	829	
TOTAL	255,963	23,774	



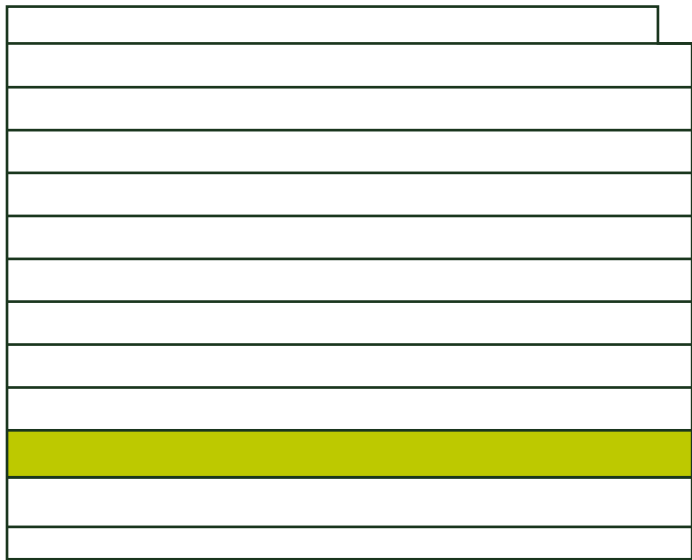
FLOOR

G

APPROX GIA

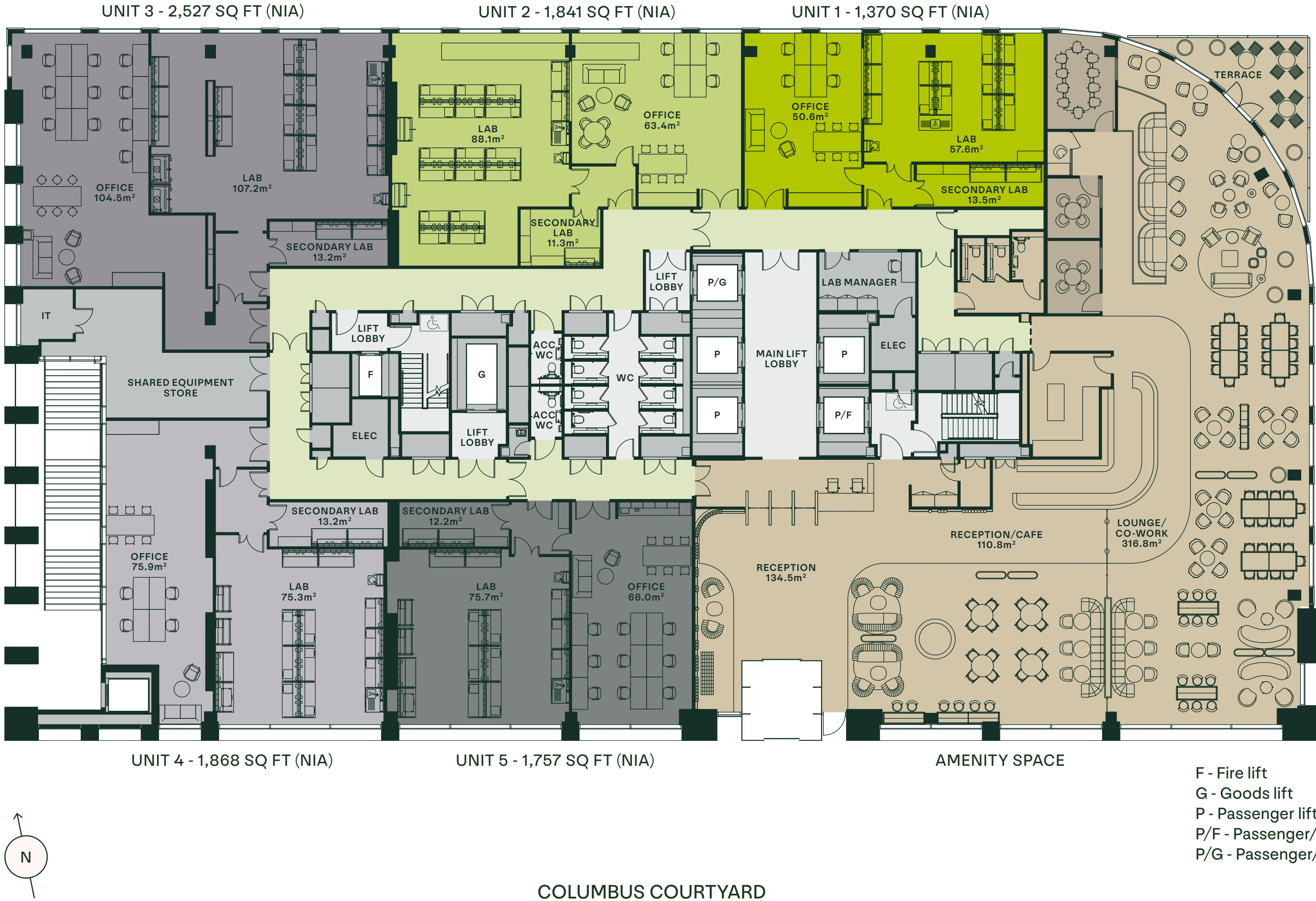
22,272 sq ft

SITE ELEVATION



- SECURITY BARRIER
- CORRIDOR
- MEETING ROOMS
- CIRCULATION
- CORE

Floor plans are indicative for a typical user only and are not representative of the finished product



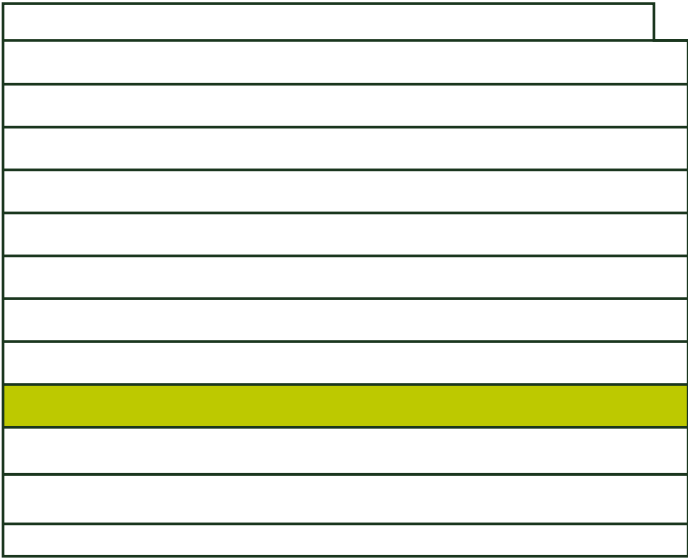
FLOOR

01

APPROX GIA

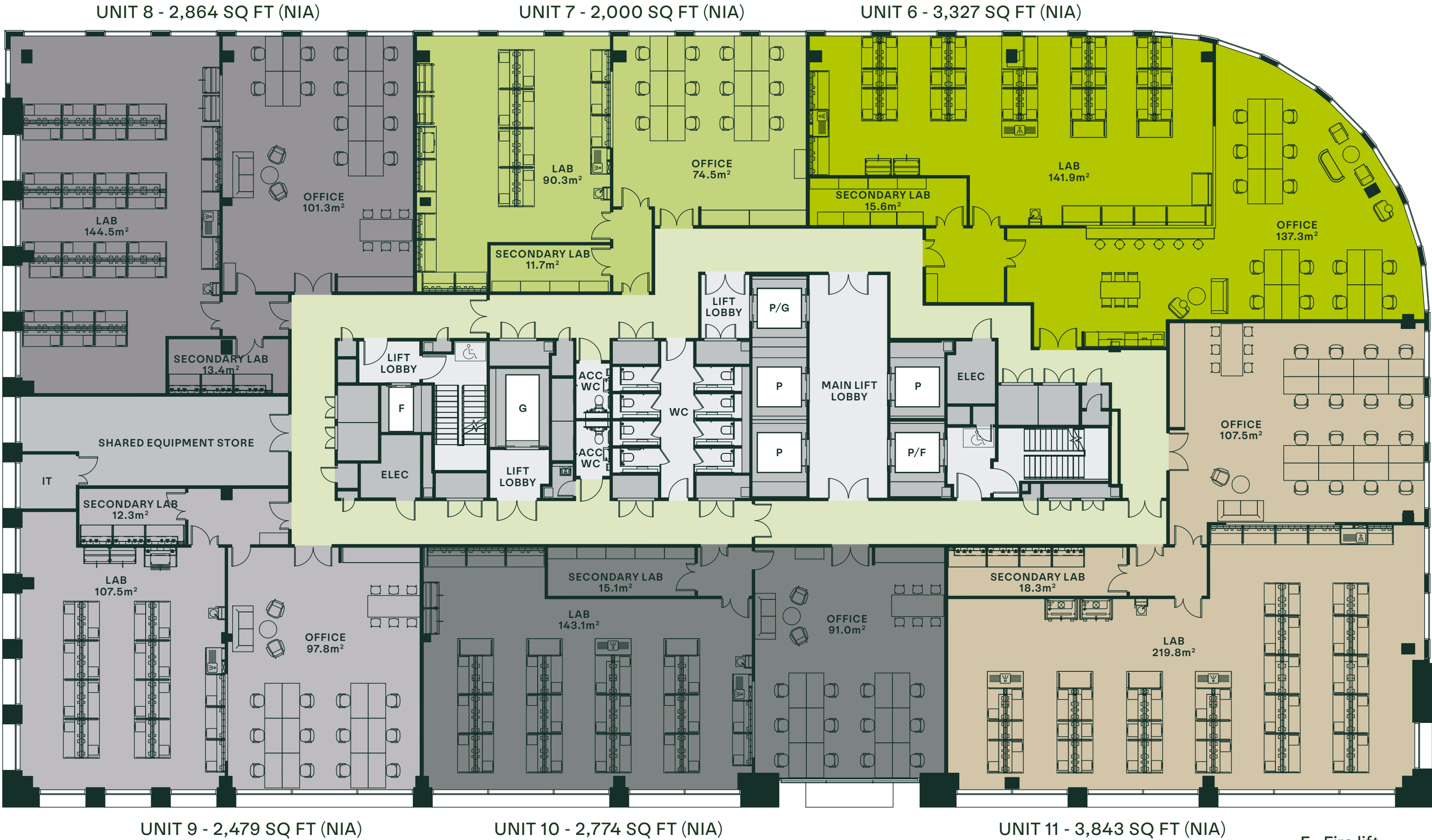
23,380 sq ft

SITE ELEVATION



- CORRIDOR
- CIRCULATION
- CORE

Floor plans are indicative for a typical user only and are not representative of the finished product



COLUMBUS COURTYARD

- F - Fire lift
- G - Goods lift
- P - Passenger lift
- P/F - Passenger/Fire lift
- P/G - Passenger/Goods lift

FLOOR

02
TEST FIT

APPROX GIA

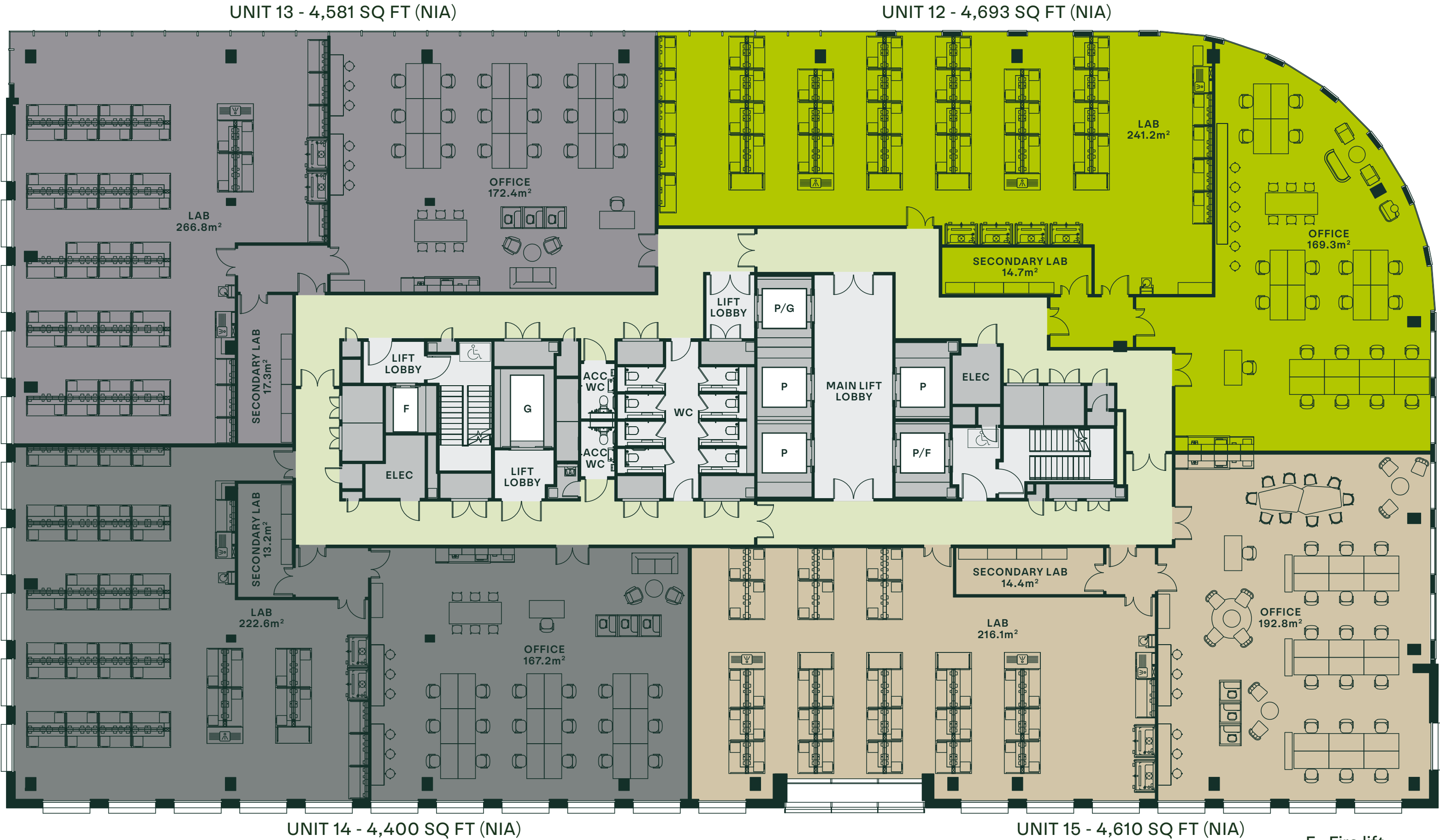
23,818 sq ft

SITE ELEVATION



- CORRIDOR
- CIRCULATION
- CORE

Floor plans are indicative for a typical user only and are not representative of the finished product



- F - Fire lift
- G - Goods lift
- P - Passenger lift
- P/F - Passenger/Fire lift
- P/G - Passenger/Goods lift

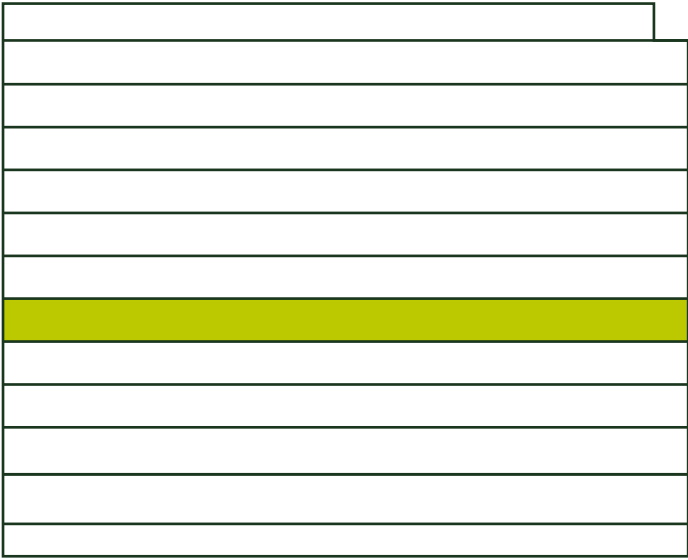
FLOOR

03

APPROX GIA

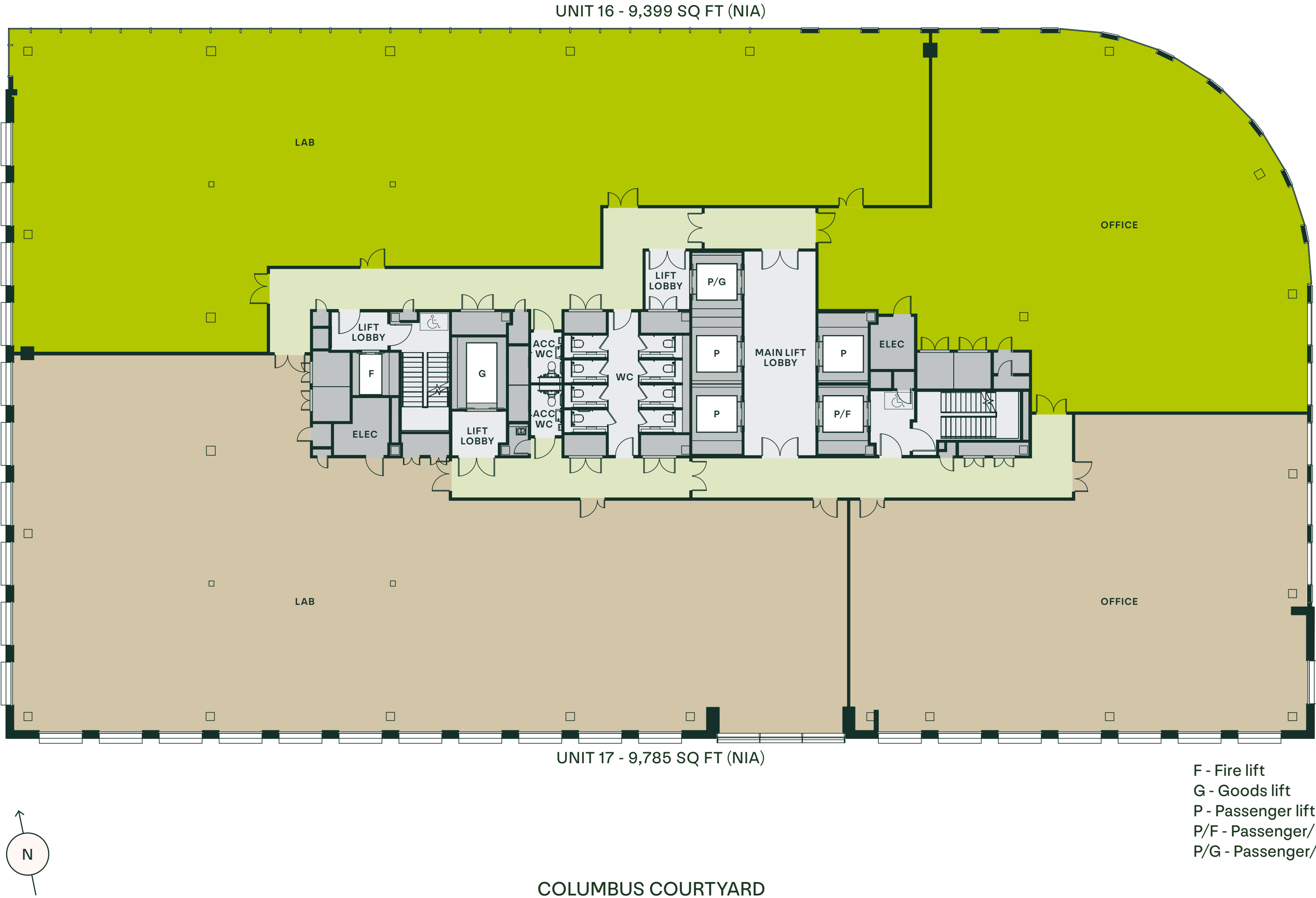
23,893 sq ft

SITE ELEVATION



- LABORATORY SPACE
- CIRCULATION
- CORE

Floor plans are indicative for a typical user only and are not representative of the finished product



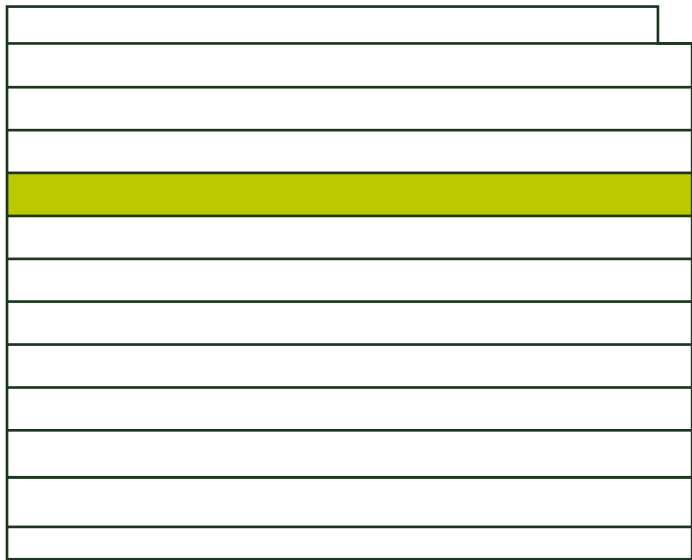
FLOOR

06

APPROX GIA

23,893 sq ft

SITE ELEVATION



- LABORATORY SPACE
- CIRCULATION
- CORE

Floor plans are indicative for a typical user only and are not representative of the finished product



- F - Fire lift
- G - Goods lift
- P - Passenger lift
- P/F - Passenger/Fire lift
- P/G - Passenger/Goods lift

COLUMBUS COURTYARD

FLOOR PLAN

FLOOR

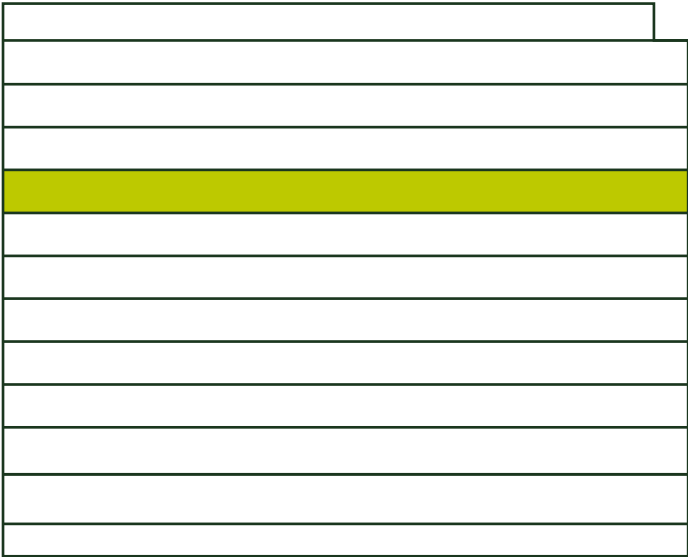
06

TEST FIT

APPROX GIA

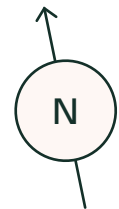
23,893 sq ft

SITE ELEVATION



- SUGGESTED TEST FIT
- CORRIDOR
- CIRCULATION
- CORE

Floor plans are indicative for a typical user only and are not representative of the finished product



COLUMBUS COURTYARD

- F - Fire lift
- G - Goods lift
- P - Passenger lift
- P/F - Passenger/Fire lift
- P/G - Passenger/Goods lift

TEST FIT

FLOOR

09

APPROX GIA

18,505 sq ft

SITE ELEVATION

[illegible]

- LABORATORY SPACE
- CIRCULATION
- CORE

Floor plans are indicative for a typical user only and are not representative of the finished product



COLUMBUS COURTYARD

THE BUILDING

FLOOR

LG

APPROX GIA

15,696 sq ft

SITE ELEVATION



- SECURITY BARRIER
- LANDLORD AREAS
- CHANGING ROOMS
- MEETING ROOMS
- SECURE CIRCULATION
- CORE



EXISTING RAMP DOWN TO BASEMENT LEVEL

COLUMBUS COURTYARD

- F - Fire lift
- G - Goods lift
- P - Passenger lift
- P/F - Passenger/Fire lift
- P/G - Passenger/Goods lift
- PL - Platform lift

Floor plans are indicative for a typical user only and are not representative of the finished product

FLOOR

B

APPROX GIA

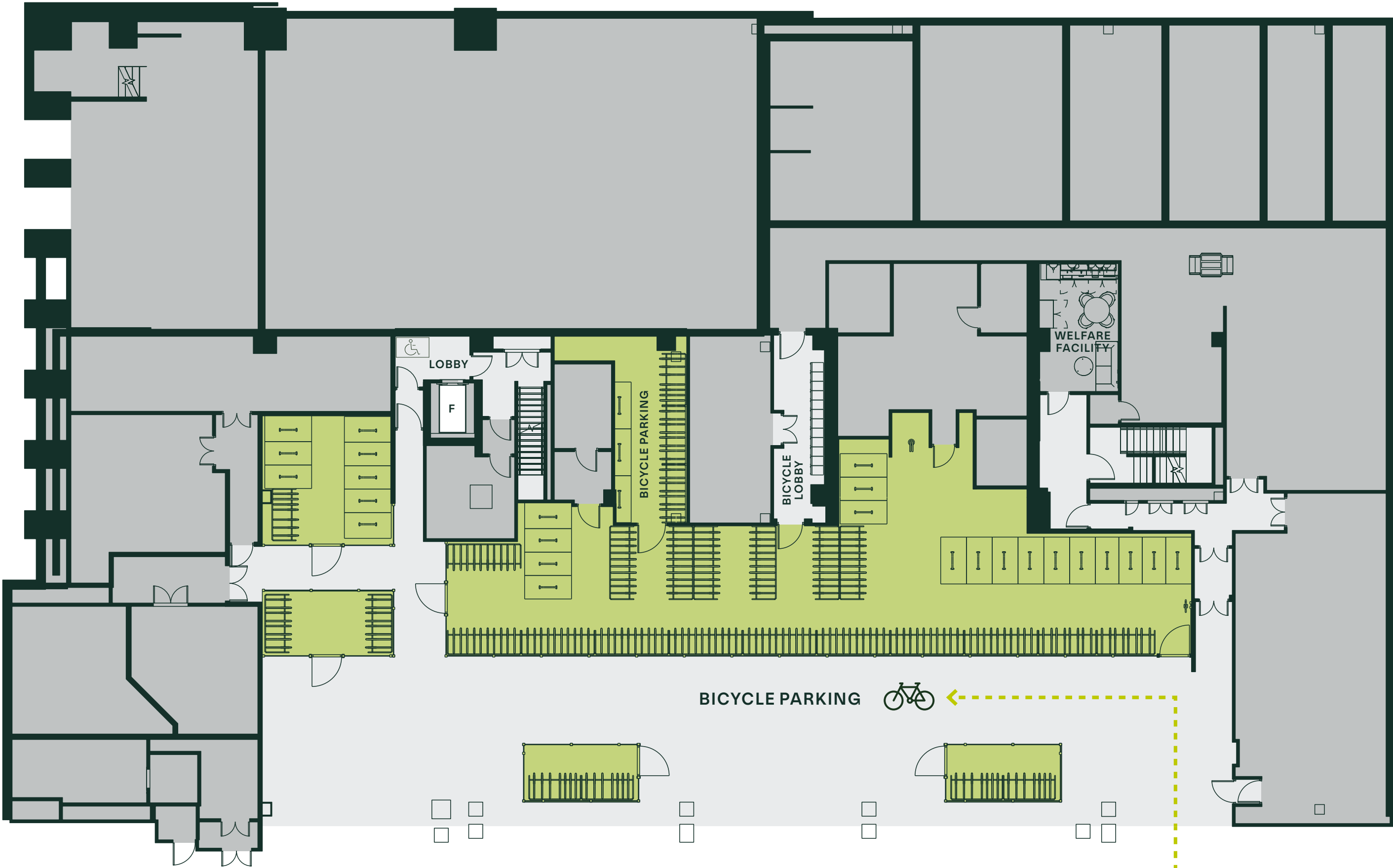
8,931 sq ft

SITE ELEVATION



- BICYCLE PARKING
- CIRCULATION
- CORE

Floor plans are indicative for a typical user only and are not representative of the finished product



F - Fire lift

COLUMBUS COURTYARD

EUROPE'S LEADING CITY FOR VC INVESTMENT



LONDON'S PRIMARY SCIENTIFIC DESTINATION

London is Europe's leading city for venture capital investment into the pharmaceutical and life science sectors.

The East London Life Sciences Super Cluster offers world-class facilities and associated infrastructure. The Super Cluster is home to leading institutions, including Barts Life Sciences – a partnership between Barts Health NHS Trust and Queen Mary University of London formed to accelerate healthcare innovation.

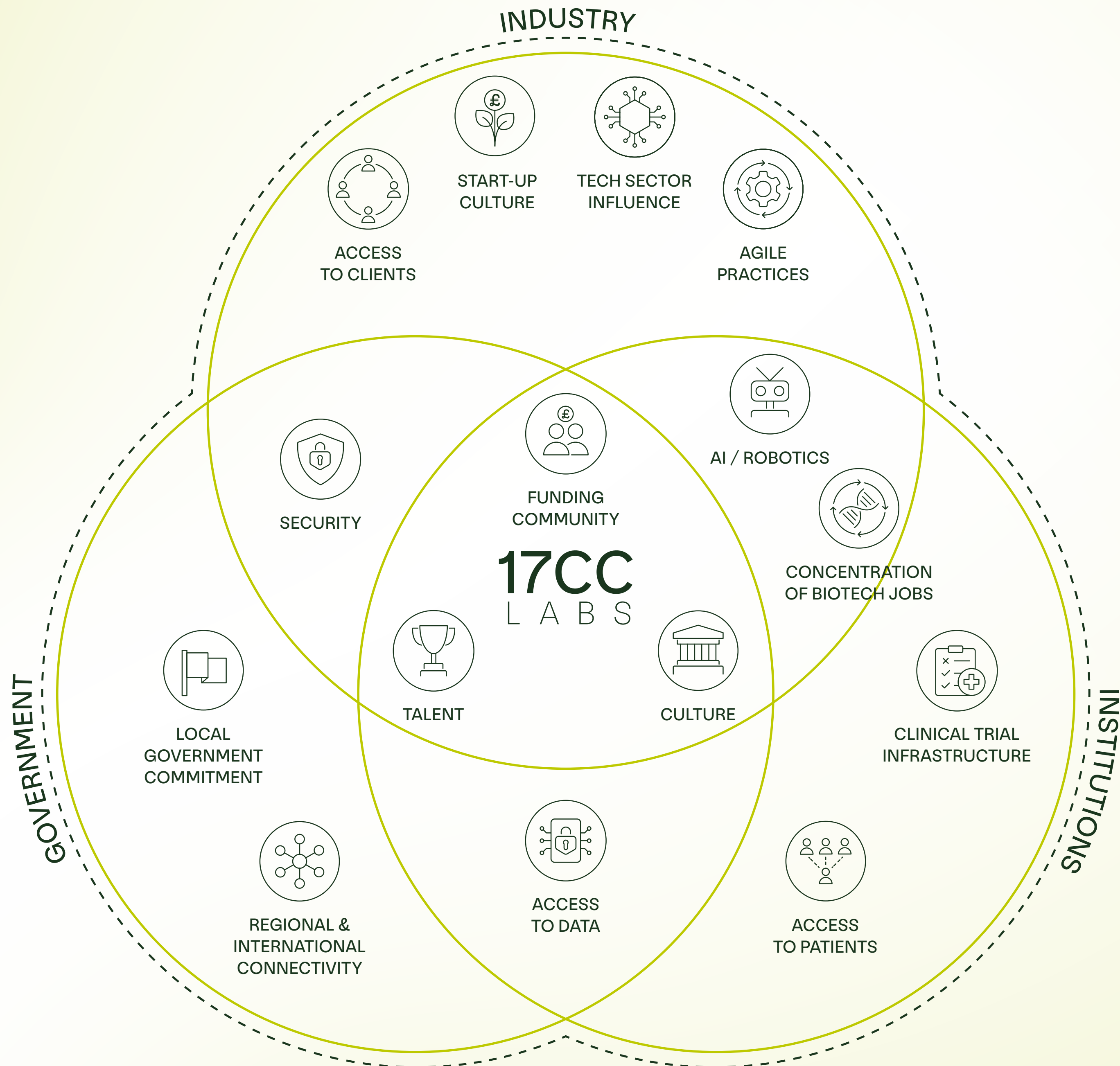
Strengthened by leading global science, technology, and pharmaceutical companies, the Super Cluster unites industry, the NHS, and academia to form one of the UK's largest life science hubs.

\$1.2 bn

HEALTH AND LIFE SCIENCES
SECTOR VENTURE CAPITAL
FUNDING DEPLOYED IN 2024

>560

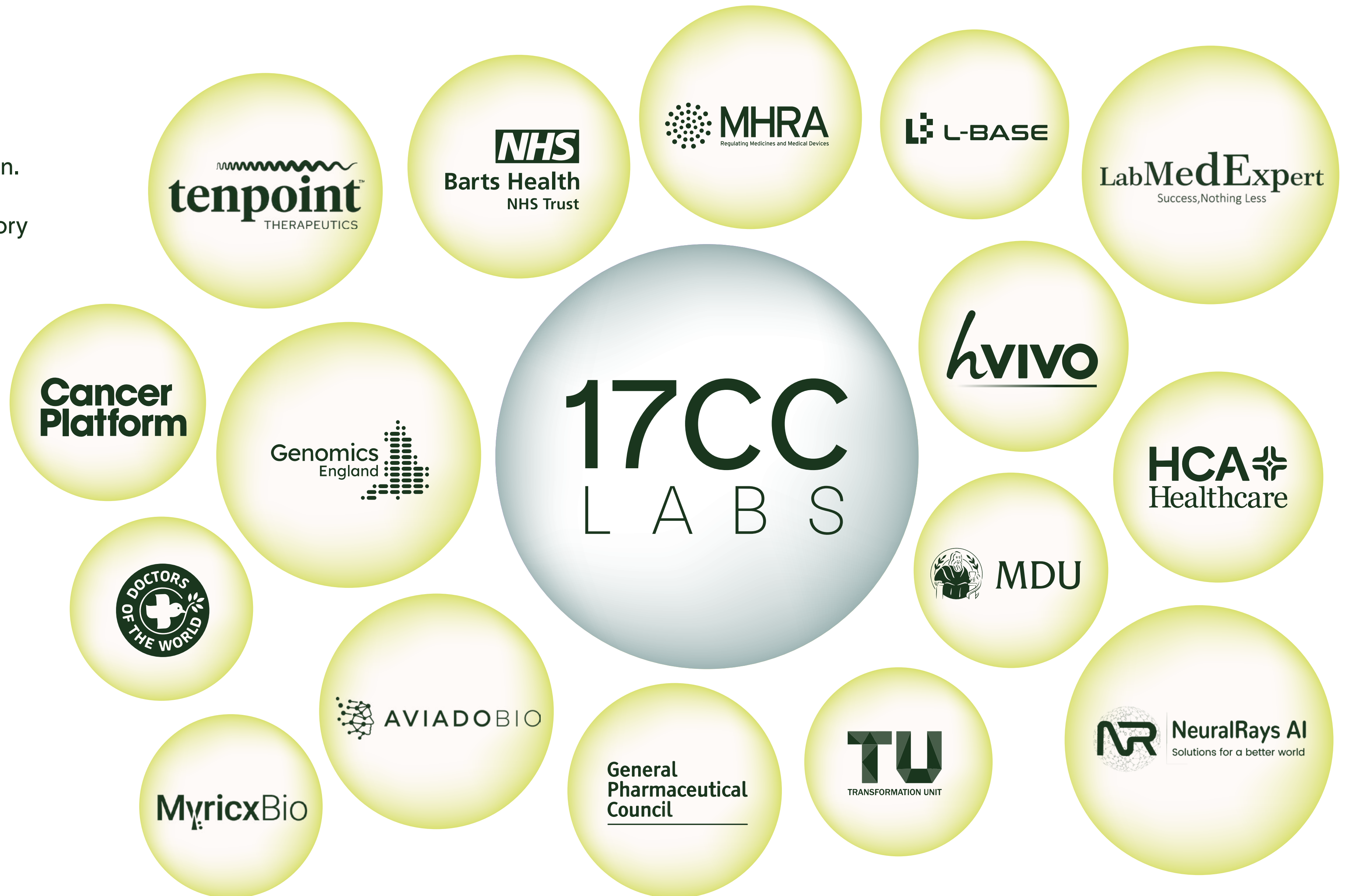
VENTURE CAPITAL INVESTORS
WITH LIFE SCIENCE EXPERIENCE
HEADQUARTERED IN LONDON



IN GOOD COMPANY

Canary Wharf is one of the fastest growing innovation districts for life sciences in London. Already home to Genomics England, the Medicines and Healthcare products Regulatory Agency, NHS Transformation, UK Health Security Agency, Barts Health NHS Trust and the General Pharmaceutical Council.

17CC LABS puts you at the heart of the Canary Wharf science cluster. Join a community of like-minded biotech, genomics and digital health pioneers, where ambitious businesses grow.



ONE STEP AHEAD

A number of incredible companies are already based in Canary Wharf. Several in particular have set their future here, taking advantage of the excellent transport links, best-in-class infrastructure, and access to talent, collaboration and academia.



Following the merger of the world renowned Barts NHS Health Trust and Queen Mary's University, their decision to base their headquarters at the heart of Canary Wharf placed them at the centre of an ecosystem hosting other healthcare and financial organisations as well as world class research facilities. The move furthers the organisation's ambition to transform the future of healthcare on a global scale.



hVIVO's move to Canary Wharf in 2023 to focus on urology and clinical trials expanded their connectivity to global pharma clients. Their recently opened facility, encompassing CL2/CL3 laboratories and overnight trial accommodation, required a robust and flexible infrastructure which Canary Wharf provides.

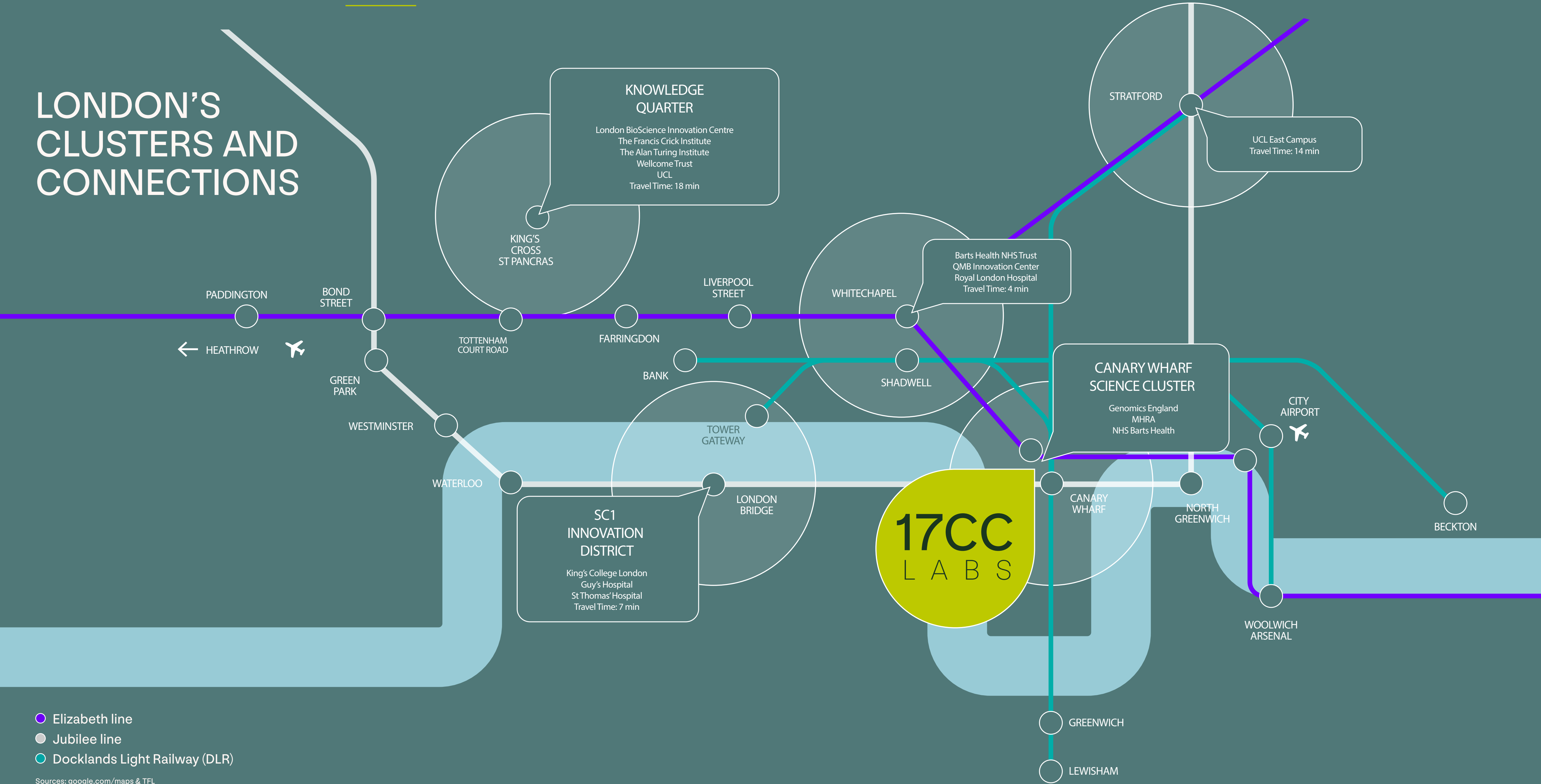


After spinning out from King's College and UK Dementia Research in 2019, AviadoBio has grown through numerous funding rounds to pioneer gene therapy research. The move to Canary Wharf was driven by a desire for improved proximity to research organisations such as Genomics England and for a location with greater access to talent.

HYPER-CONNECTED,
PERFECTLY POSITIONED

LOCATION

LONDON'S CLUSTERS AND CONNECTIONS



- Elizabeth line
- Jubilee line
- Docklands Light Railway (DLR)

Sources: google.com/maps & TFL

LOCATION

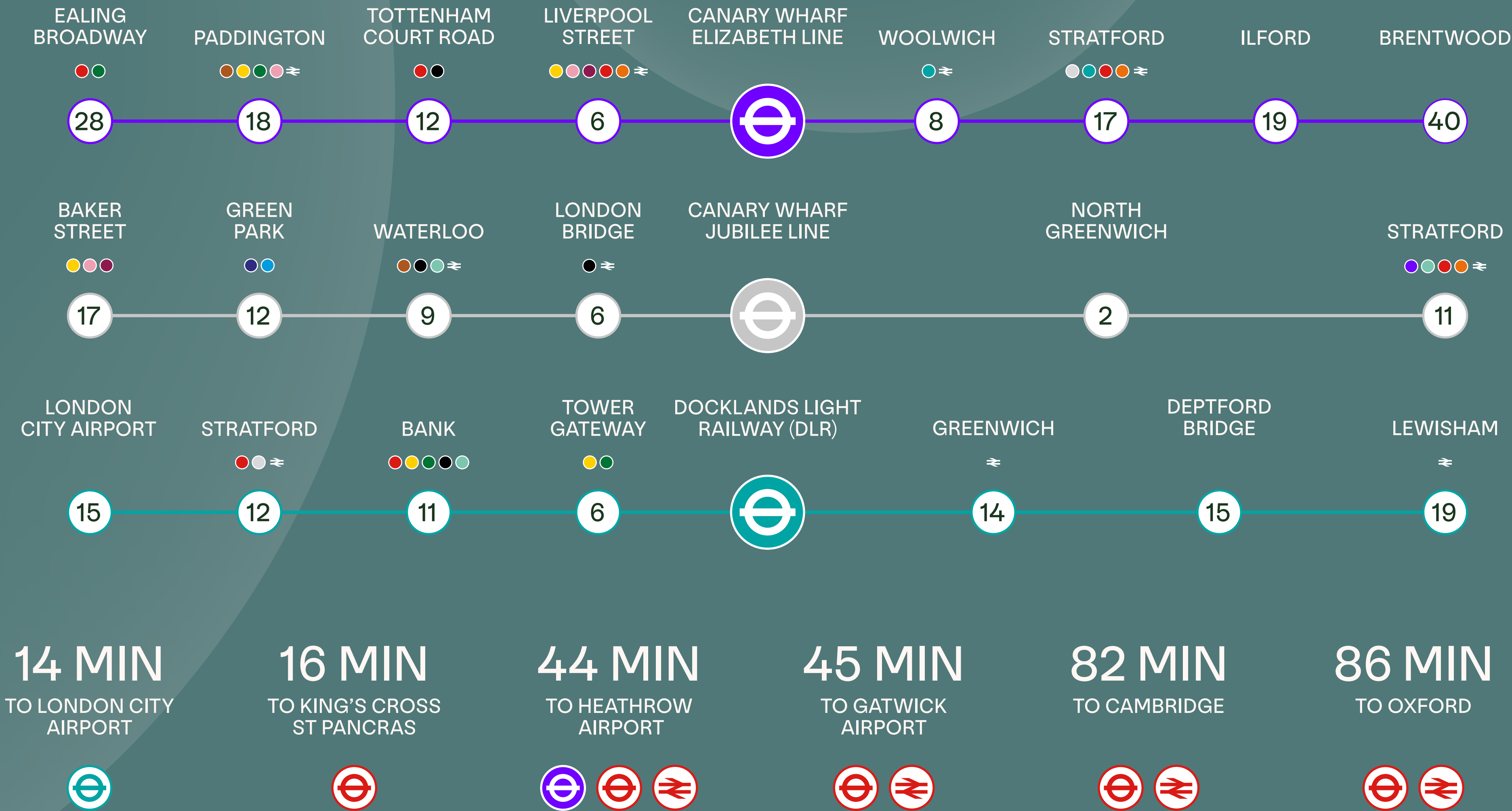
ALL WITHIN EASY REACH

The prime location of 17CC LABS allows for easy commutes and fast access across London, the Golden Triangle and internationally.

All travel times shown are in minutes.

TRANSPORT LINES:

- Bakerloo line
- Central line
- Circle line
- District line
- Docklands Light Railway (DLR)
- Elizabeth line
- Hammersmith & City line
- Jubilee line
- Metropolitan line
- Northern line
- Piccadilly line
- Victoria line
- Waterloo & City line
- London Overground
- National Rail



LOCATION

EVERYDAY AMPLIFIED

Located in the centre of Canary Wharf, 17CC LABS is in a superb waterfront position, right on the docks. The vibrant neighbourhood, provides everything needed for day to day living, from convenience retail to a wide range of bars and restaurants, all on your doorstep.

940,000 sq ft
OF RETAIL SPACE

300+
SHOPS, CAFÉS, BARS, RESTAURANTS,
SERVICES, AND AMENITIES

350,000 sq ft
OF INDEPENDENT RETAILERS
COMING TO WOOD WHARF SOON



WORK LIFE BALANCE

Canary Wharf provides a hive of activity for everyone to enjoy.

Experience an eclectic mix of places to eat, from casual street food and everyday convenience food to some of London's finest restaurants.

Looking for a spot of culture? Open-air theatre, concerts and movie nights provide entertainment throughout the year. Alternatively, take inspiration from public art collections whilst exploring the beautifully landscaped traffic-free zones. For other fun activities, visit the indoor leisure venues, literally next door.

A variety of gyms and spas are also available close by, for energising or winding down body and mind, or simply take a wander around the pedestrianised waterfront. And soon, enjoy the new 50m natural water lido at Eden Dock, due to open Summer 2026, with saunas and a clubhouse.

With this wealth of local facilities, Canary Wharf offers an outstanding urban lifestyle, not just a place to work.

16.5 acres

OF LANDSCAPED PARKS, GARDENS AND SQUARES

70,000

SEASONAL PLANTS PLANTED ANNUALLY



PLACES TO GO, PEOPLE TO MEET

Bars, restaurants and shops right on
your doorstep.



TARGETING ENVIRONMENTAL PROSPERITY

The redesign of 17CC LABS has put sustainability at its core, retaining as much of the existing structure as possible, minimising construction waste and ensuring all new features are well-considered.



TARGETING EPC A

Promoting energy efficiency, and reduced operational costs to occupiers



WIRED SCORE PLATINUM

Providing resilient and best in class digital connectivity



BREEAM CERTIFICATION

BREEAM Excellent rating is targeted



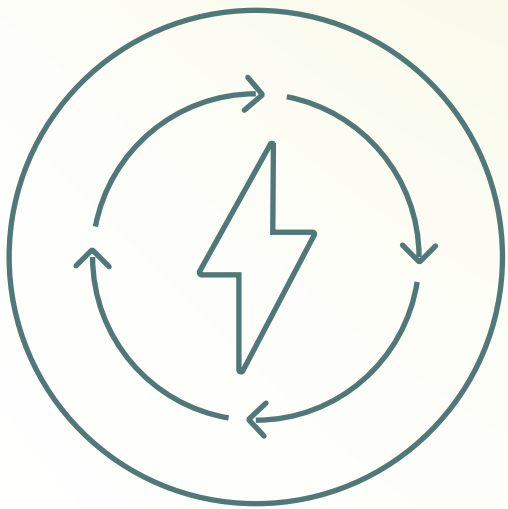
ALL ELECTRIC BUILDING

Scheme utilises energy efficient low and zero carbon technologies



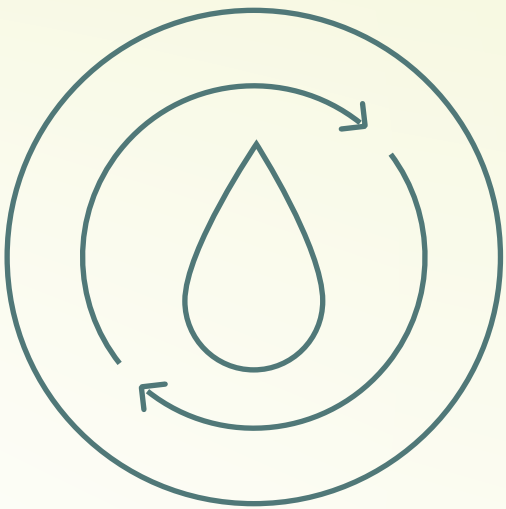
LOW EMBODIED CARBON IN CONSTRUCTION

The scheme is adopting Circular Economy principles for the reuse and recycling of materials



SUSTAINABLE ELECTRICITY PROCUREMENT

Affordable and sustainable electricity supply, helping achieve net zero carbon in operation



WATER SAVING MEASURES

Achieving a 55% improvement in water consumption



SUSTAINABLE TRANSPORT

330 dedicated cycle spaces and premium changing facilities

FOR MORE INFORMATION PLEASE CONTACT



TOM MELLOWS
E. tmellows@savills.com
T. +44 (0) 7870 555 955

MATT BARKER
E. matt.barker@savills.com
T. +44 (0) 7702 544 040

DTRE

MATT SMITH
E. matt.smith@dtre.com
T. +44 (0) 7810 191 570

FLORENCE WESTON
E. florence.weston@dtre.com
T. +44 (0) 7761 280 978

DEVELOPED BY

