

126 ALBERT ST

NW1

ONE  
TWO  
SIX

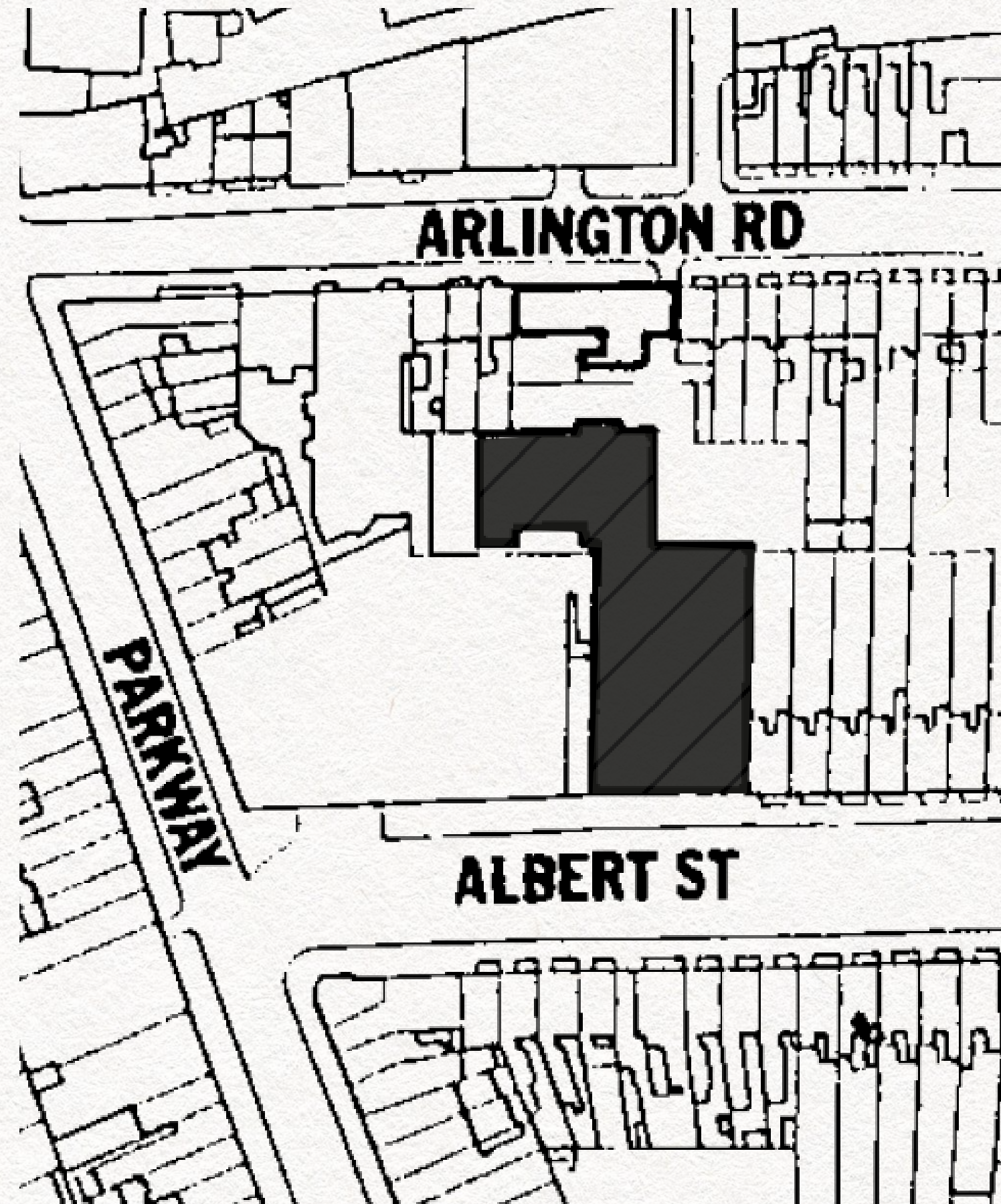
CAMDEN

19,000FT<sup>2</sup>

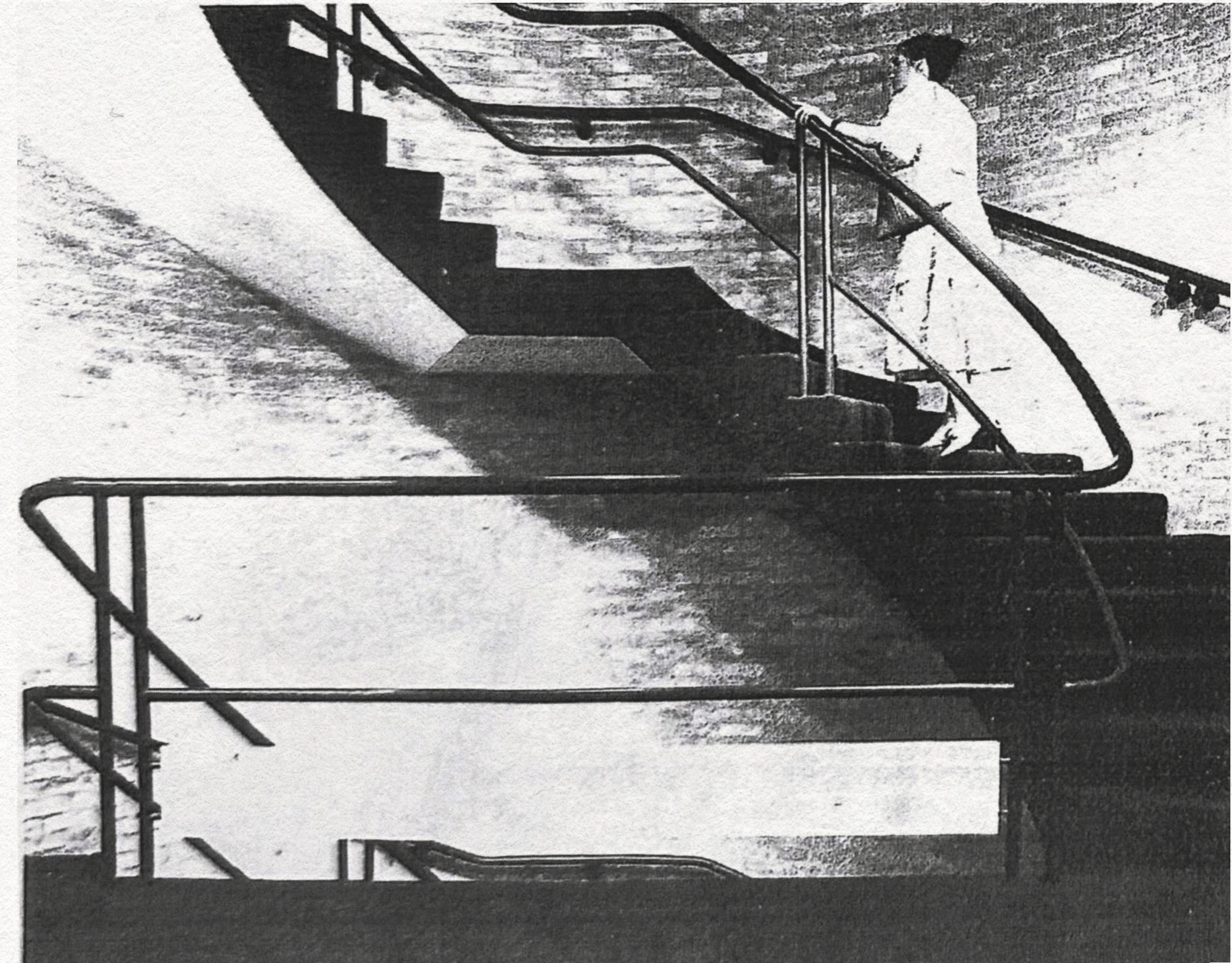
# History

Completed in the 1970s by Sheppard Robson for The King's Fund, 126 Albert Street began life as a centre for innovation in health and social care, officially opened by Princess Alexandra. The building later became the headquarters and conference hub for a global education organisation, continuing its legacy as a place for learning, collaboration, and community.

Today, after decades of institutional use, the property has been sensitively reimagined as a contemporary workplace. The refurbishment preserves its distinctive brickwork, sculptural staircases and characteristic structure, while introducing modern services, sustainable upgrades, and high-quality finishes.



Architectural Review August 1978



**The King's Fund** > **SHEPPARD ROBSON**



126 Albert Street, NW1



126 Albert Street, NW1

> HISTORY

FEATURES

AVAILABILITY

FLOOR PLANS

LOCATION

## SUSTAINABILITY

Fully electric building

EPC A

Reduced carbon through restoration of existing building

## WELLBEING

Large landscaped rear garden offering peace and tranquillity in the heart of Camden

2nd-floor terrace with planting and panoramic views of the London skyline

Openable windows on multiple floors

30 cycle spaces and end of trip facilities including showers, lockers, changing areas

3 showers available across the building

## CONNECTIVITY

Main entrance from Albert Street and secondary entrance from Arlington Road

4 minute-walk to Camden Town station

Two passenger lifts serving all floors

## ARCHITECTURE

Original brickwork and unique architectural features retained.

Over 3m raised floor to slab height on every floor

Large reception area with two lounge and breakout areas

Unique double-height skylights from Lower Ground to First Floor

## PERFORMANCE

Fibre enabled with two independent connections capable of 100GB+ speeds

High-efficiency VRF system

Designed according to British Council of Offices (BCO) best practice standards





126 Albert Street, NW1

HISTORY

> FEATURES

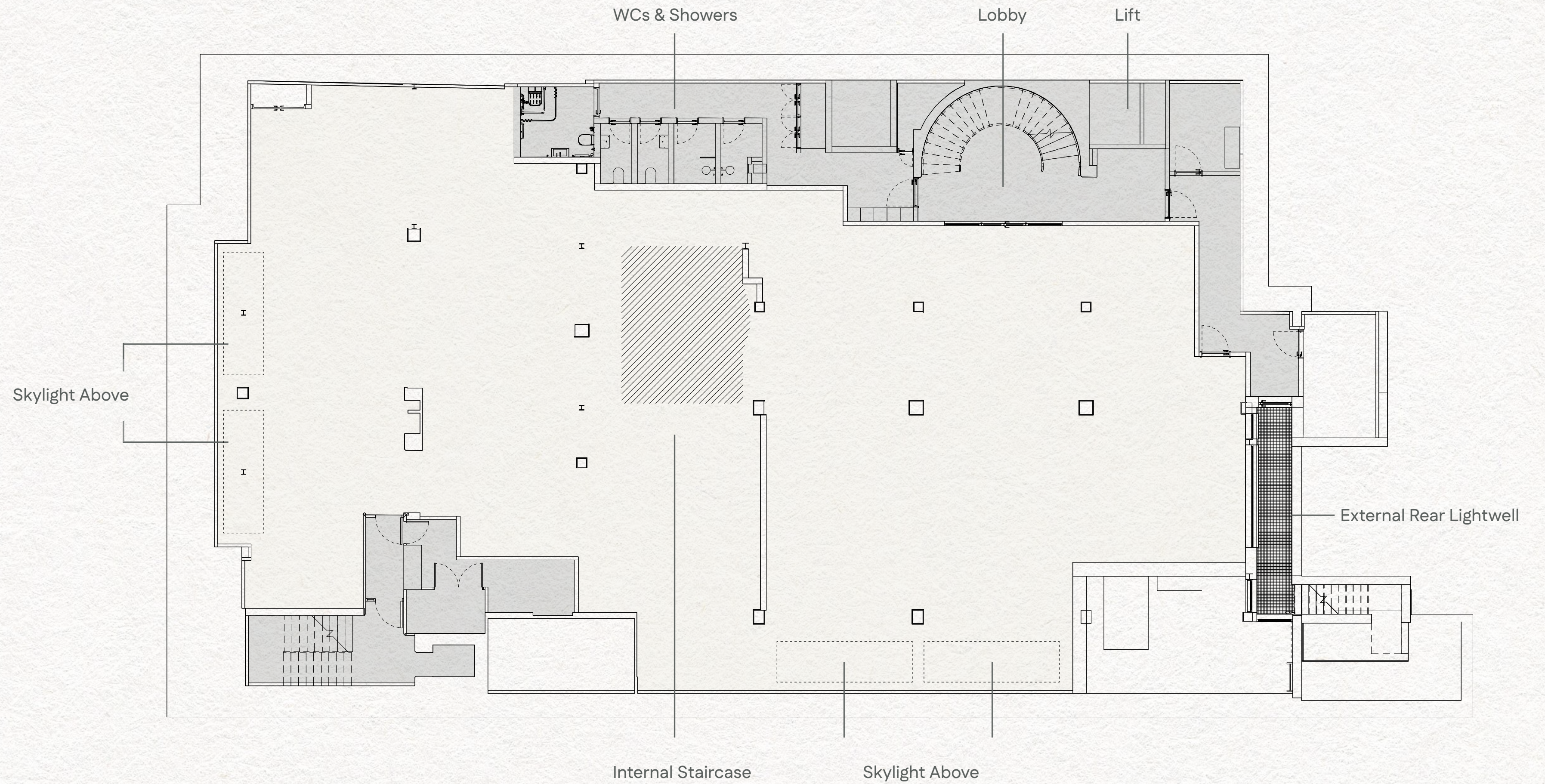
AVAILABILITY

FLOOR	SQ FT (INDOOR)		SQ FT (OUTDOOR)
Third Floor	726		
Second Floor	1,077	Private Terrace	642
First Floor	5,834		
Ground Floor	5,855	Garden	3,638
Lower Ground Floor	5,513		
	Total NIA: 19,005	Total Outdoor Area:	4,280



Third Floor  
 Second Floor  
 First Floor  
 Ground Floor  
 Lower Ground Floor

Net Internal Area  
 5,513 sq ft



Third Floor  
 Second Floor  
 First Floor  
 Ground Floor  
 Lower Ground Floor

Desks	36
Hot Desking	40
Meeting Rooms	3
Booths	2
Soft Seating	6
Teapoint	1

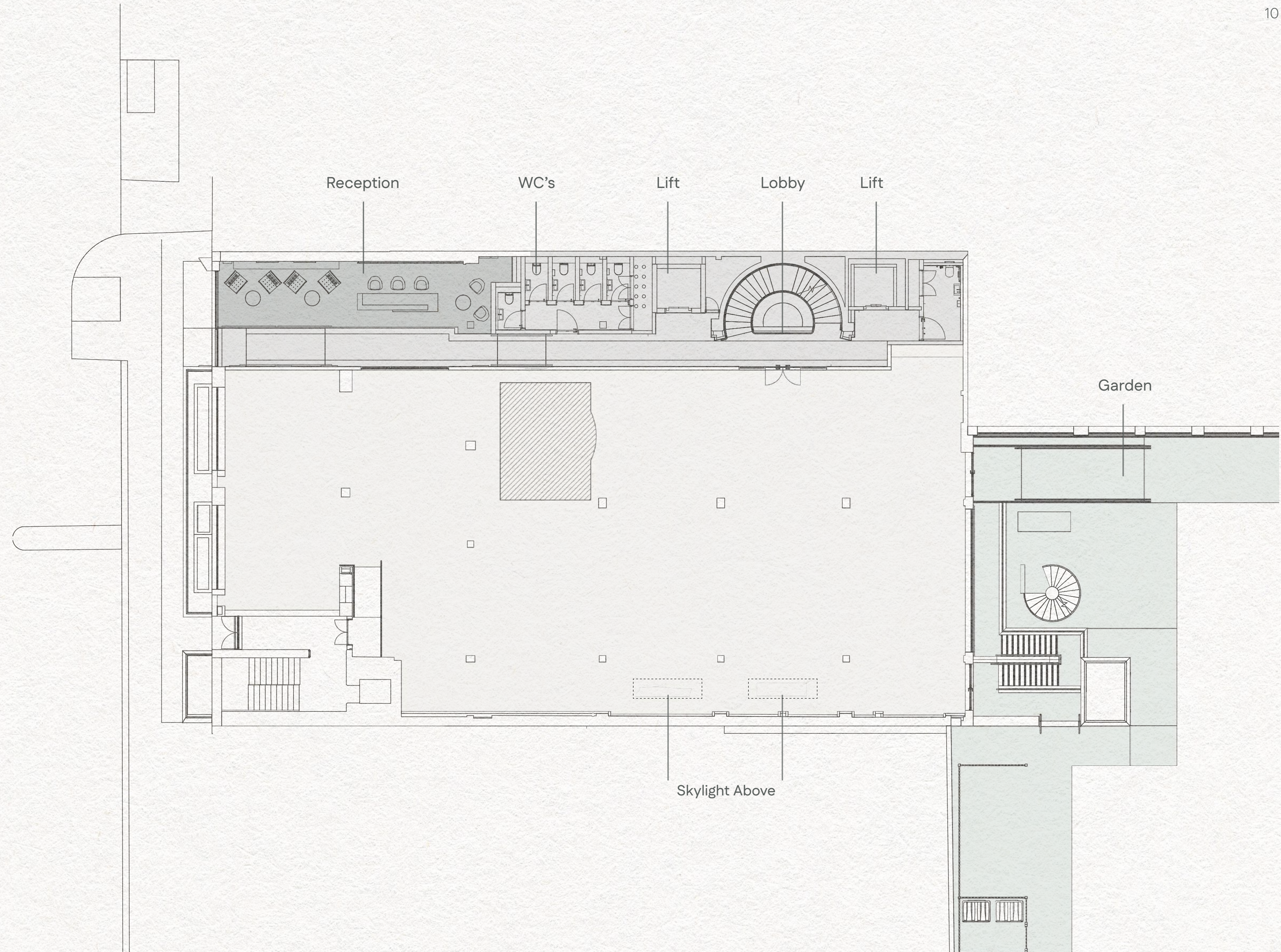


Third Floor  
Second Floor  
First Floor  
Ground Floor  
Lower Ground Floor



Third Floor  
 Second Floor  
 First Floor  
**Ground Floor**  
 Lower Ground Floor

Net Internal Area  
 5,855 sq ft



Third Floor  
 Second Floor  
 First Floor  
 Ground Floor  
 Lower Ground Floor

Desks	42
Hot Desking	16
Meeting Rooms	3
Soft Seating	8
Teapoint	1
Reception	1
Waiting Area	2



B3  
 L2  
 TE  
 GF  
 LGF

Northlight studio  
 Regency labs  
 Code collective  
 Framework  
 Northlight studio

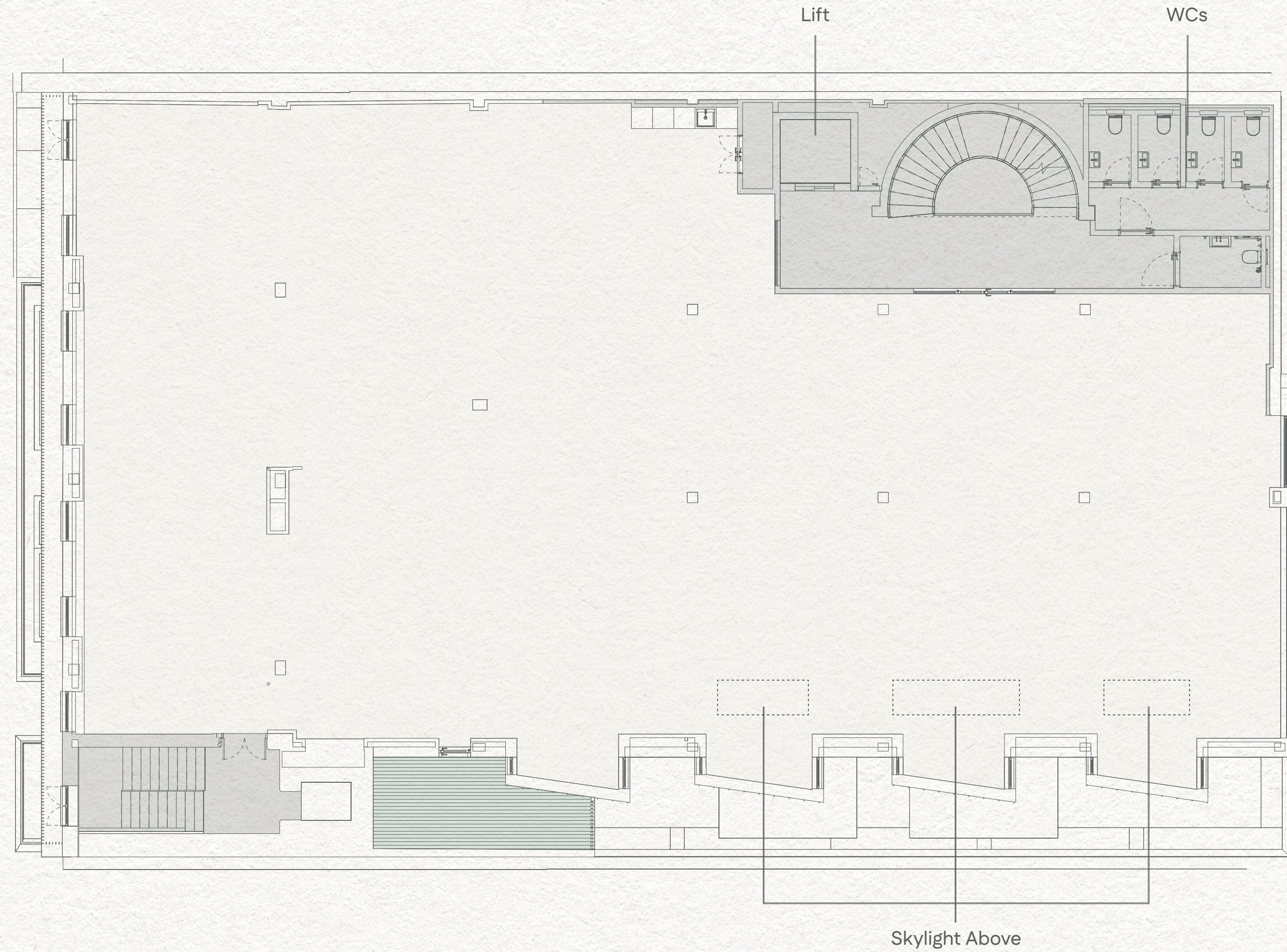


Third Floor  
Second Floor  
First Floor  
Ground Floor  
Lower Ground



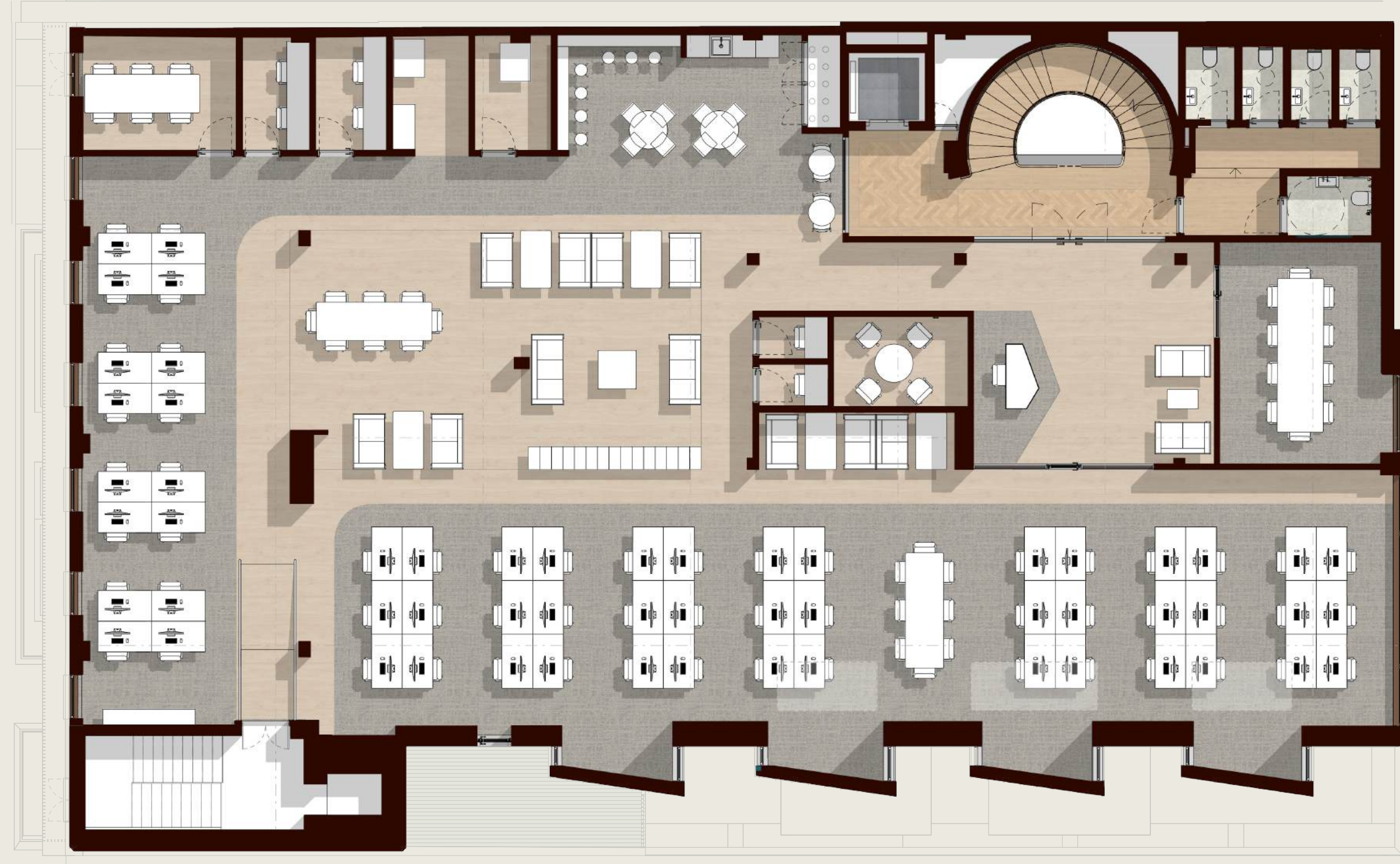
Third Floor  
Second Floor  
**First Floor**  
Ground Floor  
Lower Ground Floor

Net Internal Area  
5,834 sq ft



Third Floor  
 Second Floor  
 First Floor  
 Ground Floor  
 Lower Ground Floor

Desks	58
Hot Desking	16
Meeting Rooms	3
Booths	5
Print Area	1
Soft Seating	7
Teapoint	1
Reception	1

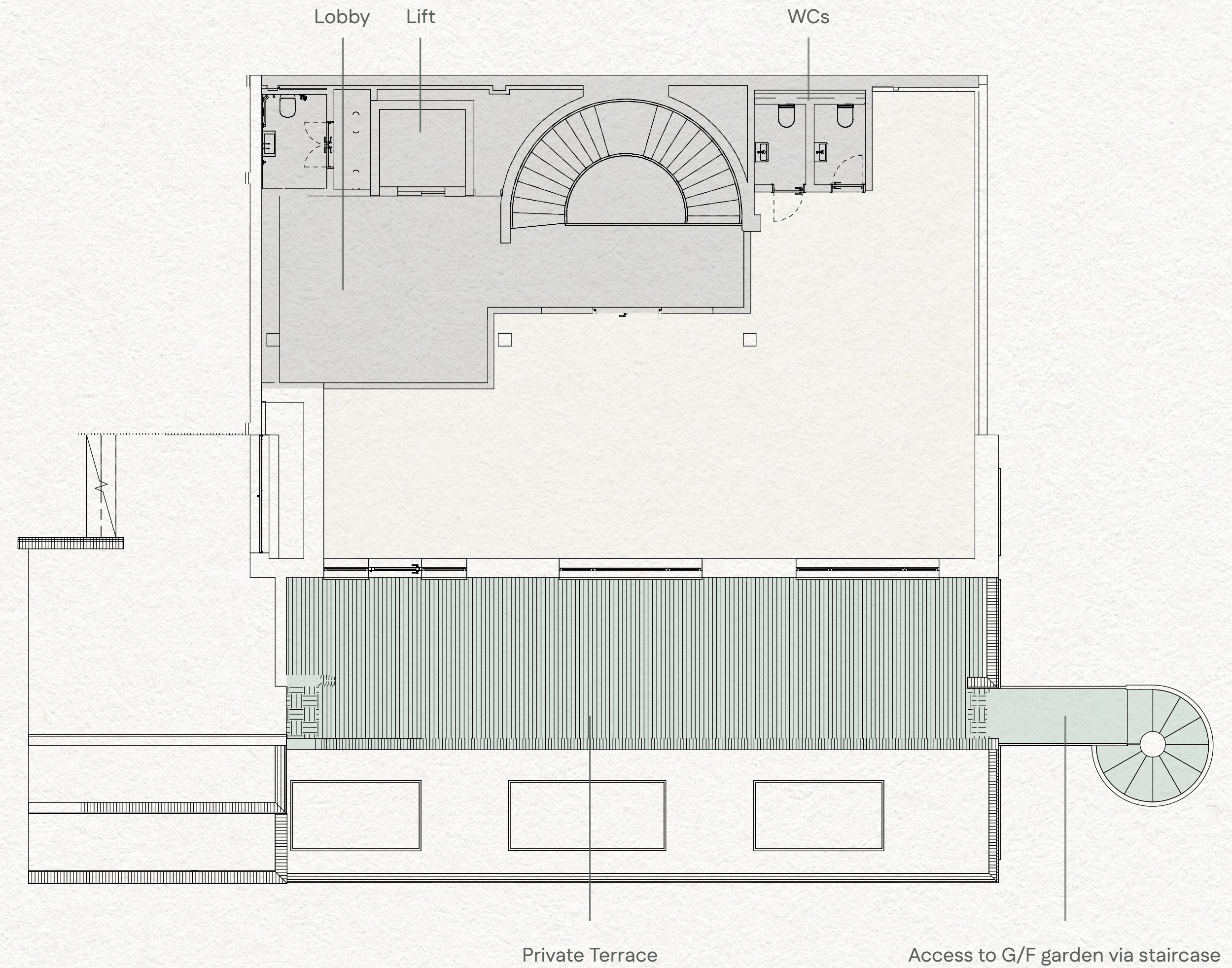


Third Floor  
Second Floor  
First Floor  
Ground Floor  
Lower Ground Floor



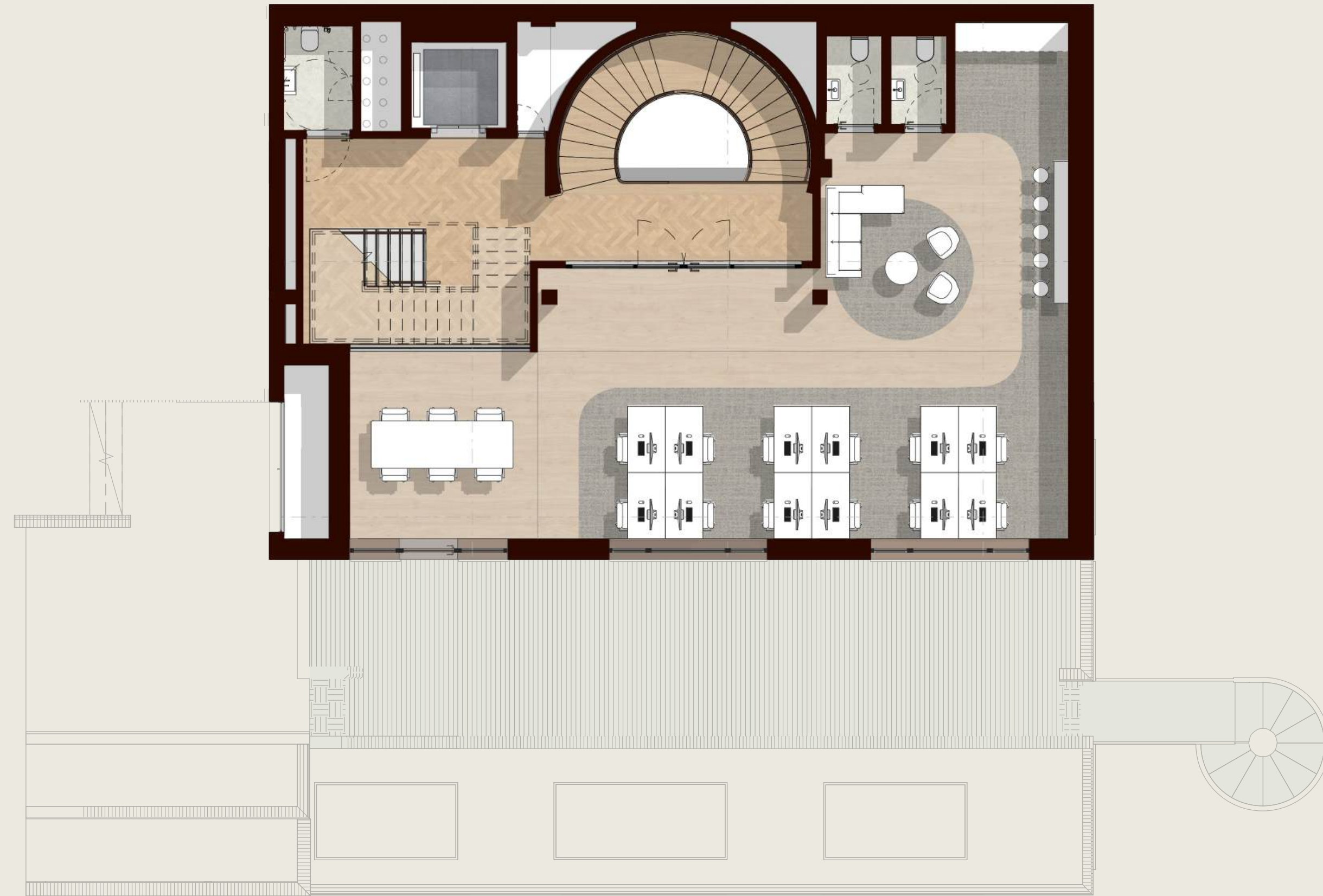
- Third Floor
- Second Floor
- First Floor
- Ground Floor
- Lower Ground Floor

Net Internal Area  
1,077 sq ft



Third Floor  
Second Floor  
First Floor  
Ground Floor  
Lower Ground Floor

Desks	12
Hot Desking	6
Soft Seating	1
Teapoint	1



Third Floor  
Second Floor  
First Floor  
Ground Floor  
Lower Ground Floor



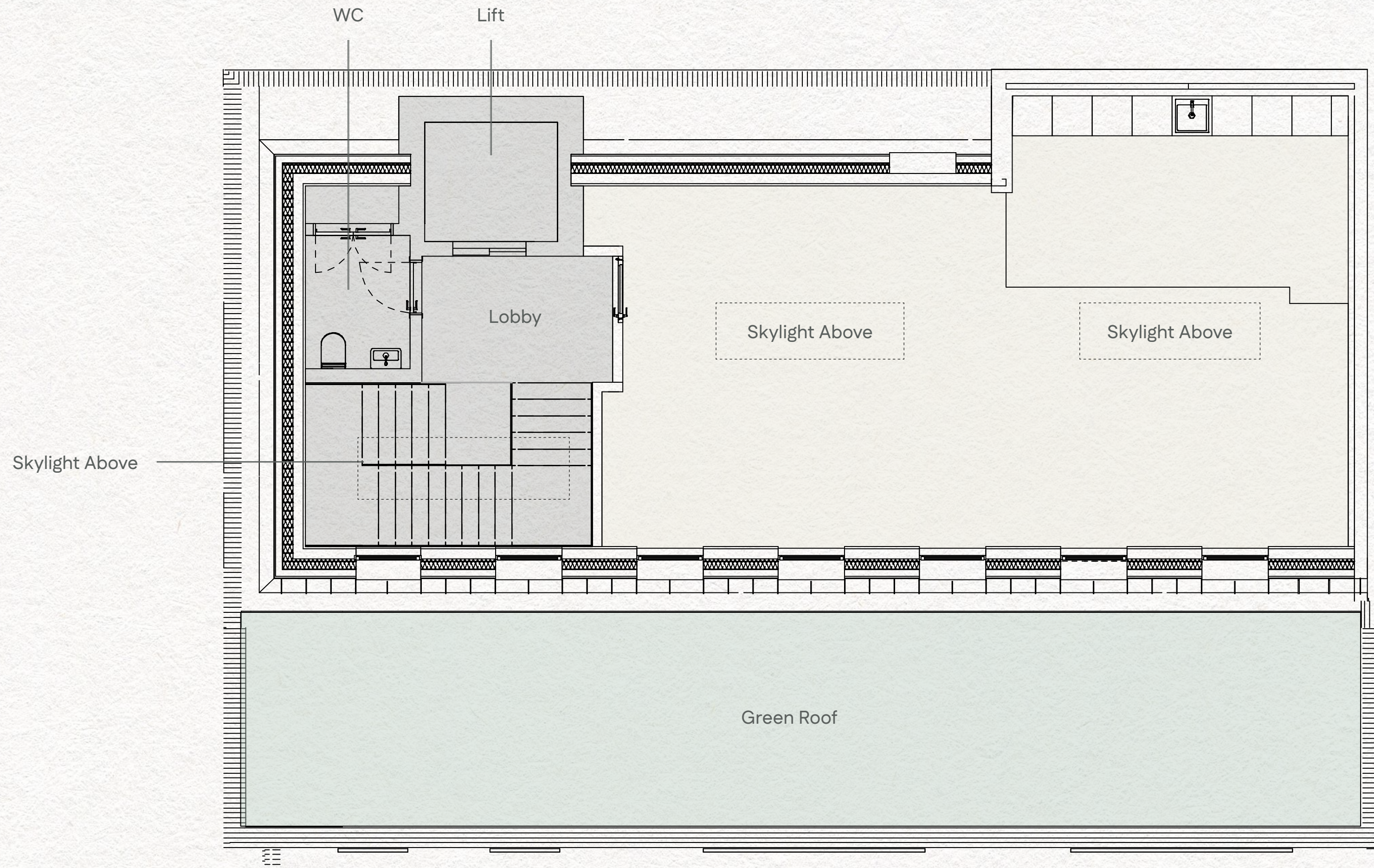
Third Floor  
 Second Floor  
 First Floor  
 Ground Floor  
 Lower Ground Floor



126 Albert Street, NW1

- Third Floor
- Second Floor
- First Floor
- Ground Floor
- Lower Ground Floor

Net Internal Area  
726 sq ft



- Third Floor
- Second Floor
- First Floor
- Ground Floor
- Lower Ground Floor

Meeting Room	1
Soft Seating	1
Teapoint	1



Third Floor

Second Floor

First Floor

Ground Floor

Lower Ground Floor



126 Albert Street, NW1

[HISTORY](#)

[FEATURES](#)

[AVAILABILITY](#)

[> FLOOR PLANS](#)

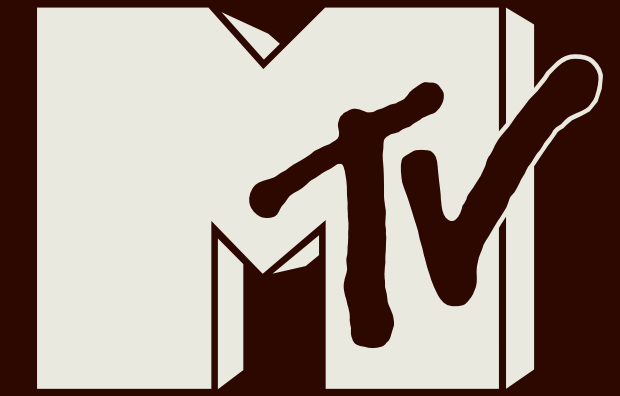
[LOCATION](#)

Located in the heart of Camden, 126 Albert Street sits within one of London's most energetic and culturally rich neighbourhoods. The street has long attracted leading artists, writers and musicians, fostering a creative heritage that continues to shape the area's character.

From renowned painters who worked on the street to musicians who wrote era-defining songs nearby, Albert Street has been home to generations of influential figures. Cultural institutions have also taken root here, contributing to a diverse and vibrant community.

Today, Camden offers employees an exceptional mix of cafés, markets, green spaces and independent retail, all within easy reach of multiple transport links. This blend of heritage, culture and connectivity makes 126 Albert Street an inspiring place to work and attract talent.







126 Albert Street, NW1

[HISTORY](#)

[FEATURES](#)

[AVAILABILITY](#)

[FLOOR PLANS](#)

[> LOCATION](#)



JAZZ CAFE



CAFE KOKO



126 Albert Street, NW1

[HISTORY](#)

[FEATURES](#)

[AVAILABILITY](#)

[FLOOR PLANS](#)

[> LOCATION](#)



126 Albert Street, NW1

[HISTORY](#)

[FEATURES](#)

[AVAILABILITY](#)

[FLOOR PLANS](#)

[> LOCATION](#)



COFFEE JAR



CAMDEN MARKET





Restaurants & Bars

- 1 BLUES KITCHEN
- 2 CAMDEN HEAD
- 3 PIZZA PILGRIMS
- 4 JAZZ CAFE
- 5 EARL OF CAMDEN
- 6 DOLSOT
- 7 DAPHNE
- 8 SUSHI SERENADE
- 9 ANDY'S GREEK TAVERNA
- 10 LUMI
- 11 LA PATAGONIA
- 12 KOKO
- 13 JAMON JAMON
- 14 LOST SOULS PIZZA
- 15 BOXPARK
- 16 CAMDEN MARKET
- 17 WHOLE FOODS MARKET




Cafes

- 1 CAMDEN BAKERY
- 2 GAILS
- 3 BARMAN COFFEE
- 4 COFFEE JAR

Fitness

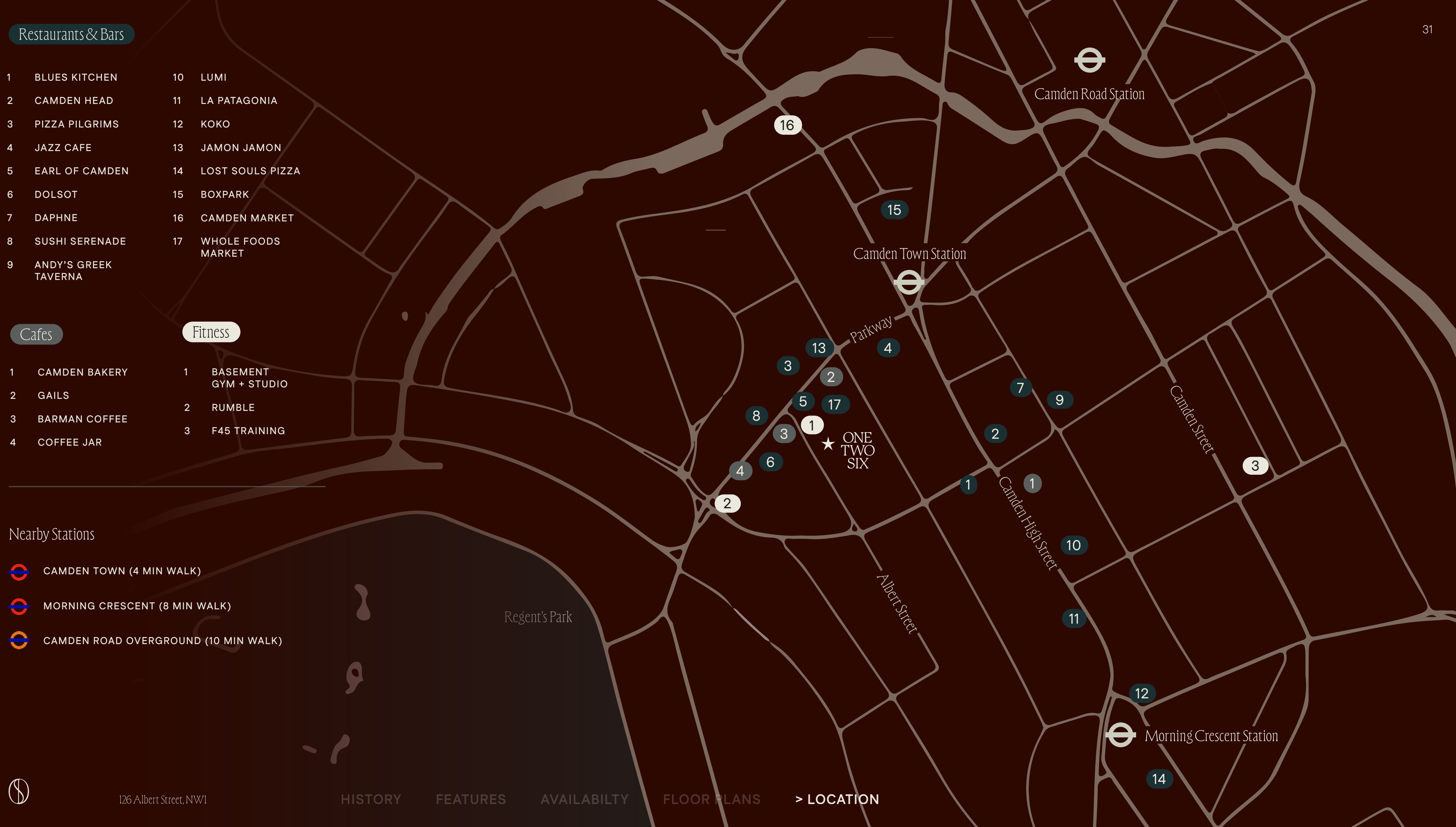
- 1 BASEMENT GYM + STUDIO
- 2 RUMBLE
- 3 F45 TRAINING

Nearby Stations

-  CAMDEN TOWN (4 MIN WALK)
-  MORNING CRESCENT (8 MIN WALK)
-  CAMDEN ROAD OVERGROUND (10 MIN WALK)



126 Albert Street, NW1



# Via Overground

# Via Underground

## MILDMAY LINE

- Stratford (27 min)
- Highbury & Islington (5 min)
- Camden Road

126 Albert Street

## NORTHERN LINE

- Waterloo (12 min)
- Tottenham Court Road (7 min)
- Euston (3 min)
- Camden Town

126 Albert Street

## NORTHERN LINE

- London Bridge (16 min)
- Bank (13 min)
- Moorgate\* (7 min)
- King's Cross (3 min)
- Camden Town

126 Albert Street

All major airports are within approximately one hour of OneTwoSix:

**Stansted Airport (70 min)**  
via Victoria, Northern Line and National Rail

**Heathrow Airport (62 min)**  
via Elizabeth and Northern Line

**Gatwick Airport (65 min)**  
via Victoria, Northern line and National Rail

All times displayed are relative to the closest Camden station

\*5-minute walk from Liverpool Street Station



126 Albert Street, NW1

[HISTORY](#)

[FEATURES](#)

[AVAILABILITY](#)

[FLOOR PLANS](#)

[> LOCATION](#)



ONE  
TWO  
SIX

## Compton

**ELLIOTT STERN**

es@compton.london  
+44 (0) 7834 918 700

**SARAH HILL**

sh@compton.london  
+44 (0) 7936 338 774

## KONTOR

**PAUL GOLD**

paul@kontor.com  
+44 (0) 7779 100 875

**SAM DAVIS**

sam.davis@kontor.com  
+44 (0) 7403 226 453

[WWW.ONETWOSIX.CO.UK](http://WWW.ONETWOSIX.CO.UK)