

STAGE

13a Macclesfield Street,
Chinatown, London, W1D 5BS

413 sq ft / 38.37 sq m

Newly refurbished and fully fitted
workspace available in September 2025

CORNER ASPECT

EXCELLENT NATURAL LIGHT

NEW COMFORT COOLING SYSTEM



stage-re.co.uk

STAGE

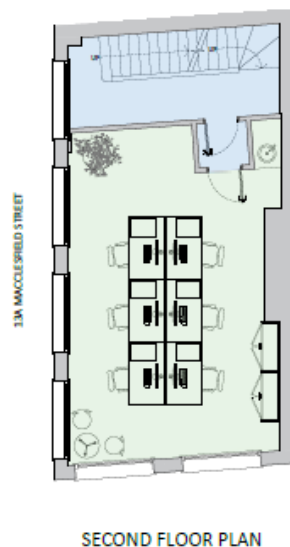


(Indicative photos of the 3rd floor)

Amenities

- x6 workstations
- Kitchenette
- Timber floors
- Comfort cooling
- LED lighting
- Common parts WCs
- EPC B

Floor Plan

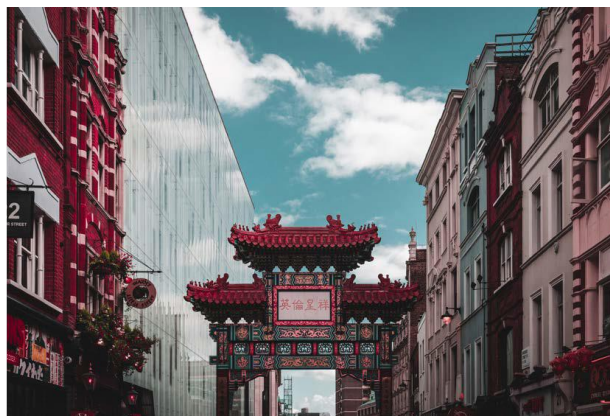


Indicative only. Not to scale.



Floor Areas

Floor	sq ft	sq m	Workstations
2 nd	413	38.37	6
Total	434	40.31	6



Location & Connectivity



[Google Maps](#)



[What Three Words](#)



Leicester Square

3 mins



Piccadilly Circus

4 mins



Tottenham Court Road

7 mins

Outgoings

Rent: Upon Application

Business Rates: £8,982 per annum

Service Charge: £5,847 per annum

Term

A new flexible lease is available for a term of 24 months plus direct from the landlord

Simon Lee: 07769 745449
simon@stage-re.co.uk

@stagere

James Guyer: 07885 770728
james@stage-re.co.uk

@stagerelondon

@stage_re_spotlight