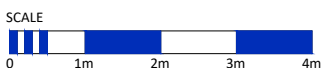
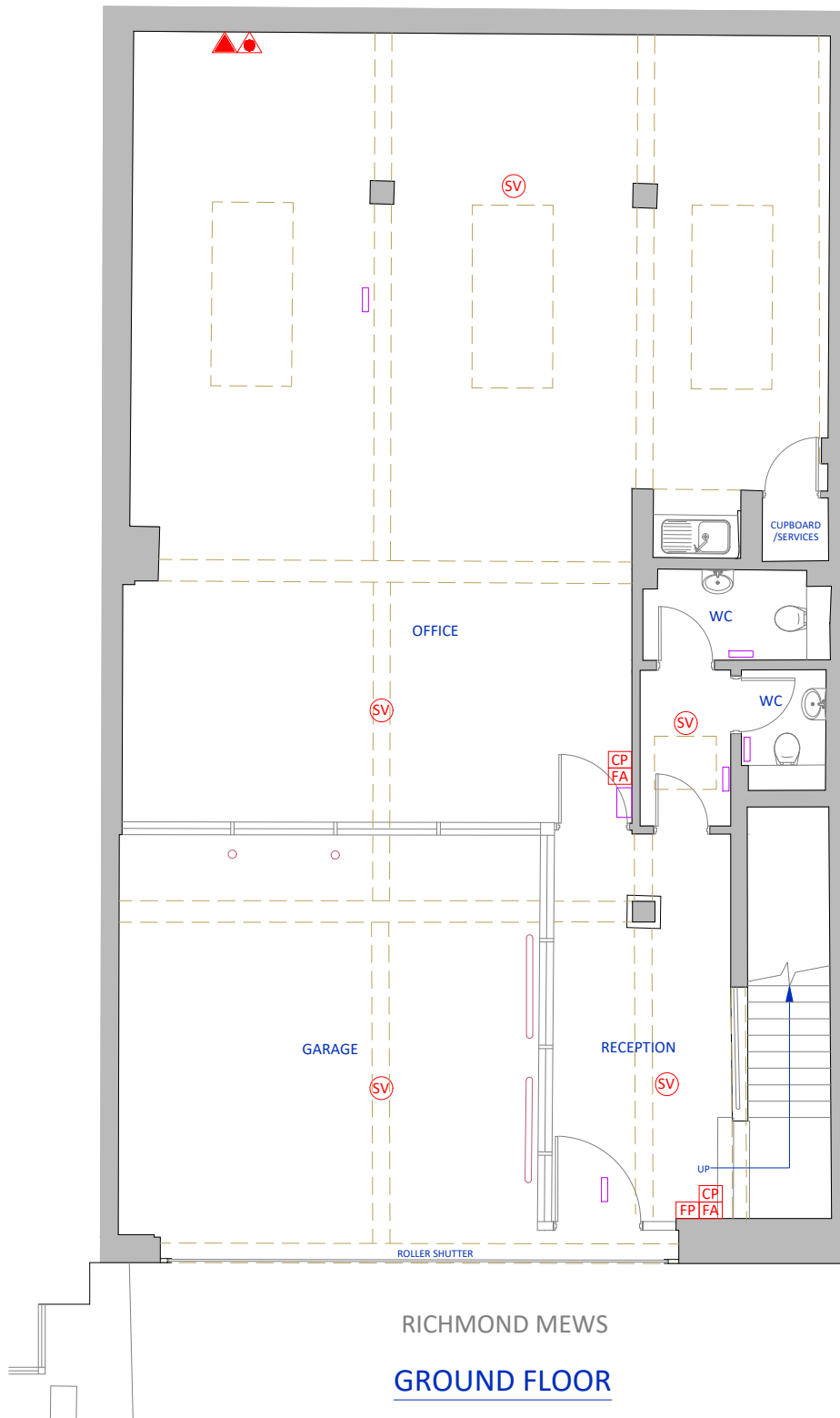



PLEASE NOTE - A4 PLANS TO BE PRINTED "AS IN DOCUMENT" NOT ENLARGED OR SHRUNK TO FIT PAGE

## KEY

- EMERGENCY LIGHT - STRIP BATTEN
- CP FIRE ALARM CALL POINT
- FP FIRE ALARM PANEL
- FA FIRE ACTION PLAN
- SS SMOKE DETECTOR AND SOUNDER
- SV COMBINED SMOKE DETECTOR, SOUNDER AND VISUAL INDICATOR
- ▲ FIRE EXTINGUISHER - CARBON DIOXIDE
- FIRE EXTINGUISHER - FOAM
- ➔ EMERGENCY EXIT SIGN

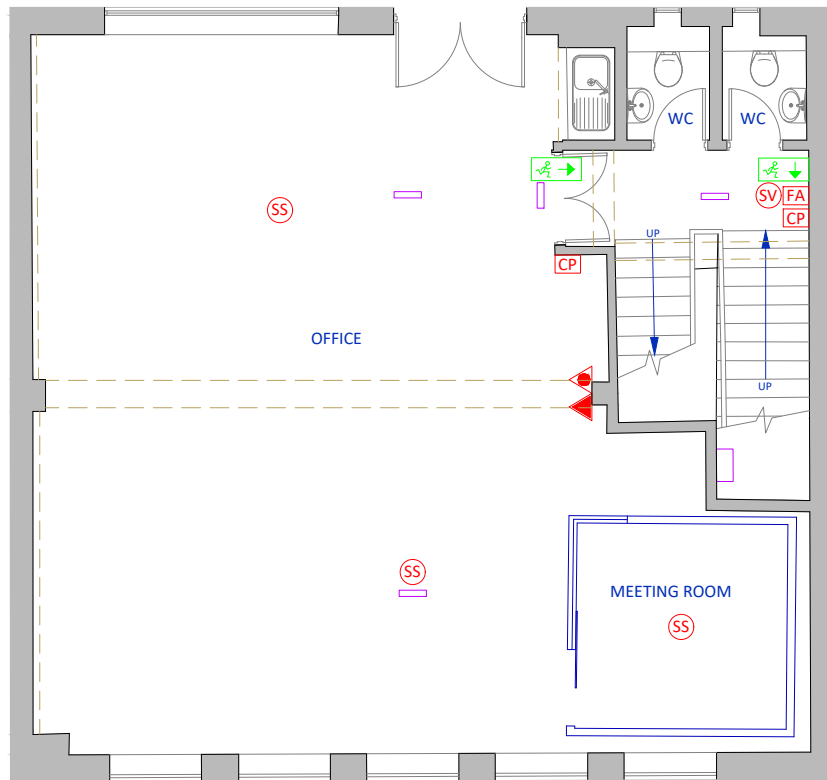


client	address 1 RICHMOND MEWS LONDON W1D 3DA	location GROUND FLOOR FIRE AND EMERGENCY LIGHTING PLAN	date 22.04.2024	scale 1:100	sheet A4	 <b>Office Test</b> THE COMPLETE SOLUTION
			dwg no. PL15368-01	revision A	drawn SB	checked AA

PLEASE NOTE - A4 PLANS TO BE PRINTED "AS IN DOCUMENT" NOT ENLARGED OR SHRUNK TO FIT PAGE

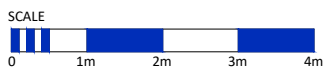
KEY


- EMERGENCY LIGHT - STRIP BATTEN
- CP FIRE ALARM CALL POINT
- FP FIRE ALARM PANEL
- FA FIRE ACTION PLAN
- SS SMOKE DETECTOR AND SOUNDER
- SV COMBINED SMOKE DETECTOR, SOUNDER AND VISUAL INDICATOR
- FIRE EXTINGUISHER - CARBON DIOXIDE
- FIRE EXTINGUISHER - FOAM
- EMERGENCY EXIT SIGN



RICHMOND MEWS  
FIRST FLOOR


PLAN LONDON LTD © COPYRIGHT PROTECTED 2024.




client	address 1 RICHMOND MEWS LONDON W1D 3DA	location FIRST FLOOR FIRE AND EMERGENCY LIGHTING PLAN	date 22.04.2024	scale 1:100	sheet A4	 <b>Office Test</b> THE COMPLETE SOLUTION
			dwg no. PL15368-02	revision A	drawn SB	checked AA

PLEASE NOTE - A4 PLANS TO BE PRINTED "AS IN DOCUMENT" NOT ENLARGED OR SHRUNK TO FIT PAGE


KEY




EMERGENCY LIGHT - STRIP BATTEN




FIRE ALARM CALL POINT




FIRE ALARM PANEL



FIRE ACTION PLAN




SMOKE DETECTOR AND SOUNDER




COMBINED SMOKE DETECTOR, SOUNDER AND VISUAL INDICATOR



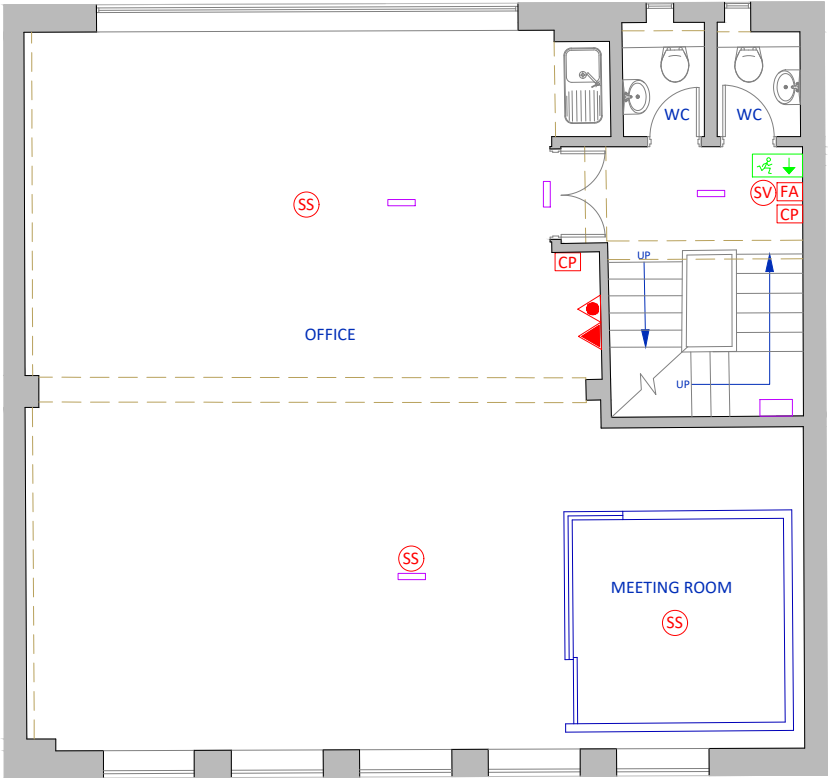
FIRE EXTINGUISHER - CARBON DIOXIDE



FIRE EXTINGUISHER - FOAM

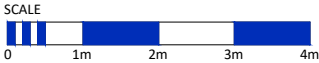



EMERGENCY EXIT SIGN



RICHMOND MEWS  
SECOND FLOOR


PLAN LONDON LTD © COPYRIGHT PROTECTED 2024.




client	address 1 RICHMOND MEWS LONDON W1D 3DA	location SECOND FLOOR FIRE AND EMERGENCY LIGHTING PLAN	date 22.04.2024	scale 1:100	sheet A4	 Office Test THE COMPLETE SOLUTION
			dwg no. PL15368-03	revision A	drawn SB	checked AA

PLEASE NOTE - A4 PLANS TO BE PRINTED "AS IN DOCUMENT" NOT ENLARGED OR SHRUNK TO FIT PAGE


KEY




EMERGENCY LIGHT - STRIP BATTEN




FIRE ALARM CALL POINT




FIRE ALARM PANEL




FIRE ACTION PLAN




SMOKE DETECTOR AND SOUNDER




COMBINED SMOKE DETECTOR, SOUNDER AND VISUAL INDICATOR



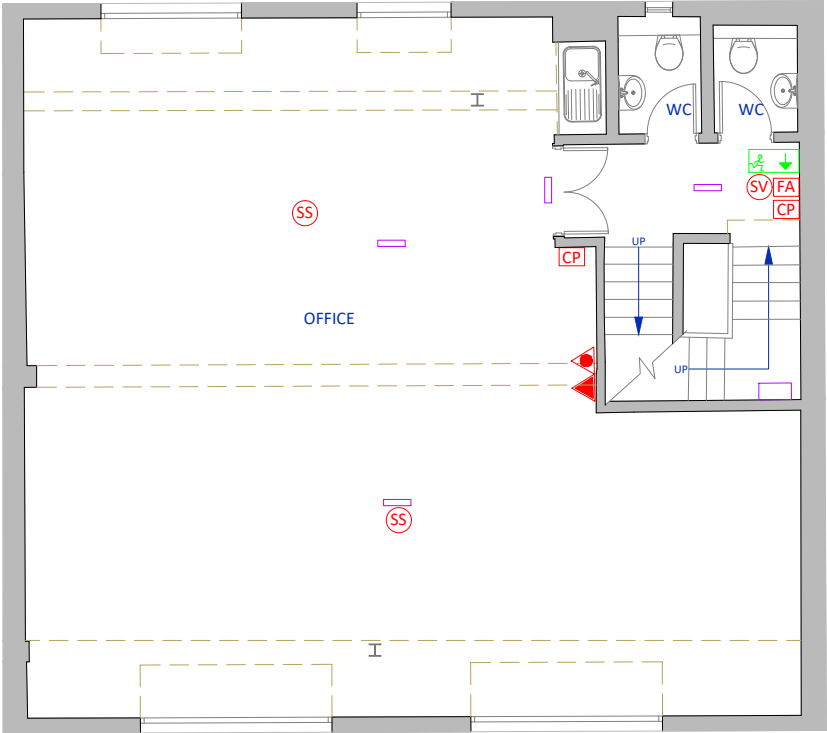
FIRE EXTINGUISHER - CARBON DIOXIDE



FIRE EXTINGUISHER - FOAM

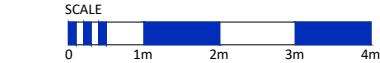



EMERGENCY EXIT SIGN



RICHMOND MEWS  
THIRD FLOOR

PLAN LONDON LTD © COPYRIGHT PROTECTED 2024.



client	address 1 RICHMOND MEWS LONDON W1D 3DA	location THIRD FLOOR FIRE AND EMERGENCY LIGHTING PLAN	date 22.04.2024	scale 1:100	sheet A4	 <b>Office Test</b> THE COMPLETE SOLUTION
			dwg no. PL15368-04	revision A	drawn SB	checked AA