

KH



FROM 3,230 SQ FT  
UP TO 6,983 SQ FT.

35 KINGS HILL AVENUE

KENT ME16





Highlights

Workspace

Plans & Spec

Team

KINGS HILL SPORTS PARK

KINGS HILL GOLF CLUB

KINGS HILL LINEAR PARK

30 TOWER VIEW

LIBERTY SQUARE



35 KINGS HILL AVENUE

10 KINGS HILL AVENUE

2 KINGS HILL AVENUE

17 KINGS HILL AVENUE

KINGS HILL BUSINESS PARK

DAVID LLOYD GYM





## THE HIGHLIGHTS

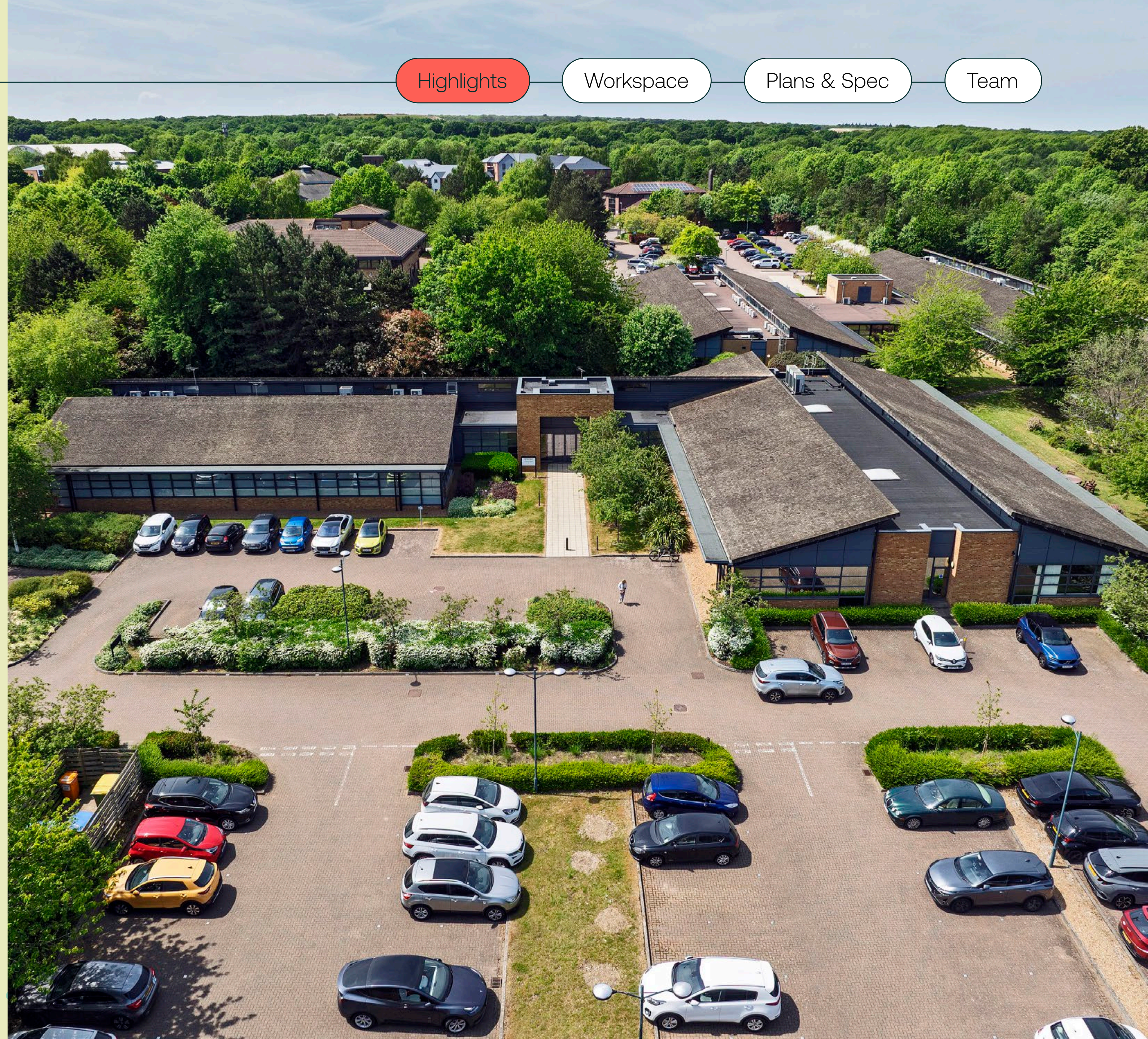
- Targeted EPC A
- Contemporary refurbished office space with spacious pitch roof feature
- New all-electric air-conditioning
- On-site car parking ratio of 1:126 sq ft
- Available Q1 2026

Highlights

Workspace

Plans & Spec

Team





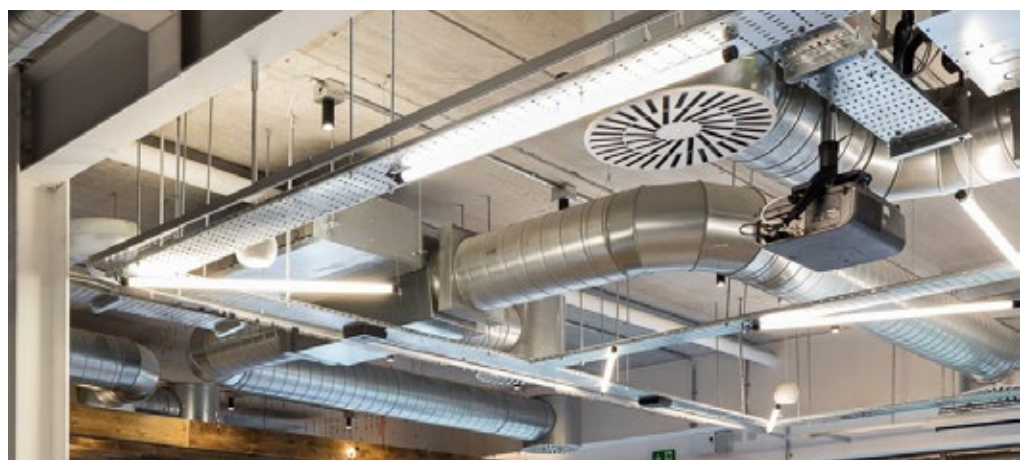


Highlights

Workspace

Plans & Spec

Team



A modern and sophisticated palette featuring soft whites, muted taupes, warm greys, and brushed metallics, carefully balanced to suit a professional, flexible workplace environment.

The tones are calm, understated, and adaptable, offering a neutral foundation that will appeal to a wide tenant base.



Computer generated images





Highlights

Workspace

Plans & Spec

Team

Take a look at VR from 35 Kings Hill Avenue



Computer generated image



Highlights

Workspace

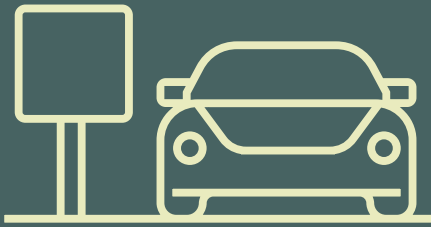
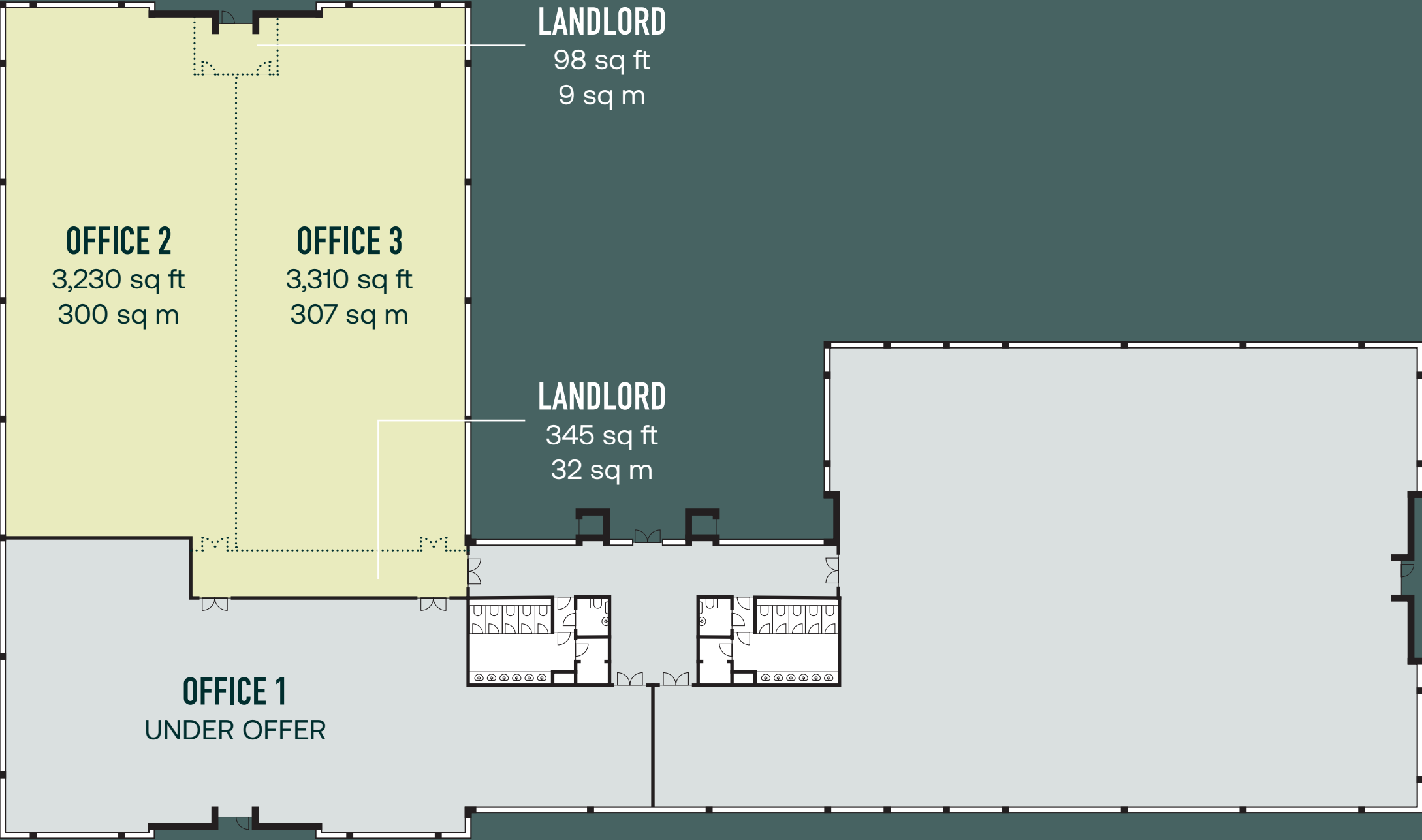
Plans & Spec

Team

FLOORPLAN & SPEC

3,230—6,983 SQ FT

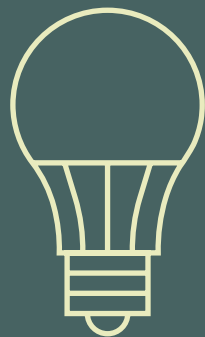
POTENTIAL SPLITS .....  
AVAILABLE  
LET



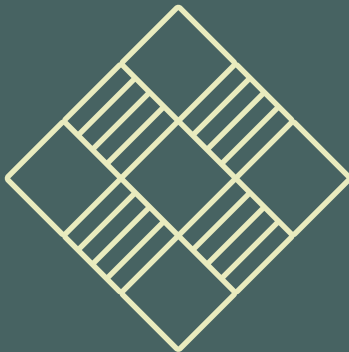
Car parking with EV charging  
1:126 sq ft



Fast broadband options from multiple suppliers



LED lighting



Carpeted raised access floors



WC's



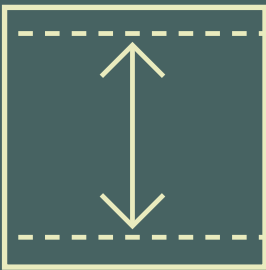
Targeted EPC 'A'



New 'CAT-A' refurbishment



New all-electric air-conditioning



Minimum floor-to-ceiling height of 2.737m



GET IN TOUCH  
WITH OUR TEAM



ANDY TUCKER  
07721 260545  
atucker@hanovergreen.co.uk



STEVE RICHMOND  
07771 900682  
stephen.richmond@ryan.com

- Highlights
- Workspace
- Plans & Spec
- Team



35 Kings Hill Avenue  
Kings Hill, Kent  
ME19 4AR  
///built.clays.bridge

kings-hill-offices.com

These brief particulars have been prepared as agents for our clients and are intended as a convenient guide to supplement an inspection or survey. Their accuracy is not guaranteed. They contain statements of opinion and in some instances we have relied on information provided by others. You should verify the particulars on your visit to the property and the particulars do not obviate the need for a full survey and all the appropriate enquiries. Accordingly, there shall be no liability as a result of any error or omission in the particulars or any other information given.

January 2026. Reference 2511021. Design by JAMES&JAMES | jamesjames.design

KINGS HILL