

# 10 PORTMAN STREET

LONDON W1

TO LET

GOOD QUALITY 2ND FLOOR OFFICE  
SPACE IN THE HEART OF MARYLEBONE

SECOND FLOOR  
523 SQ. FT.

RIB

ROBERT IRVING BURNS

10 PORTMAN STREET



## DESCRIPTION

The available accommodation comprises the second floor of this attractive period corner building. The space is arranged as two interconnecting rooms and has been recently redecorated to a high standard, offering a bright and presentable working environment.

The floor benefits from excellent levels of natural light, complemented by well-maintained and bright common parts. Amenities include shared WC facilities, Cat 5 data cabling, and comfort cooling throughout.

The landlord also occupies the building, ensuring a well-managed and professional environment.



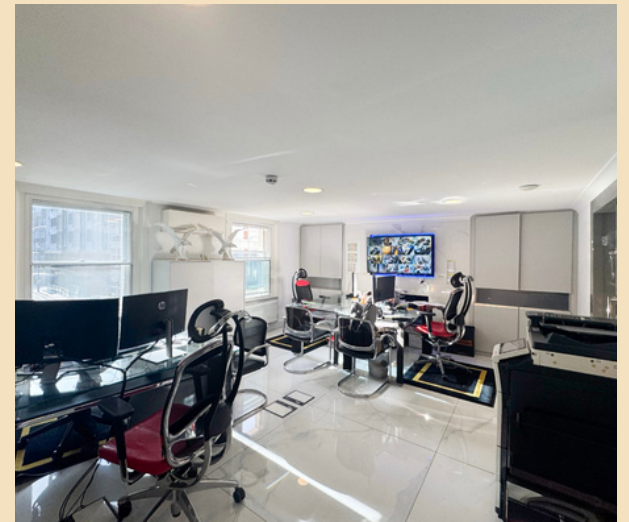
## AMENITIES

- EXCELLENT NATURAL LIGHT
- CAT 5 DATA CABLING
- SHARED WC FACILITIES
- TWO INTERCONNECTING ROOMS
- COMFORT COOLING THROUGHOUT
- PROFESSIONALLY MANAGED BUILDING
- RECENTLY REDECORATED TO A HIGH STANDARD

## Finances

TOTAL SIZE (SQ.FT.)	523
QUOTING RENT (P.A.)	£40,000
ESTIMATED RATES PAYABLE (P.A.)	£14,580
SERVICE CHARGE	TBC
<b>ESTIMATED OCCUPANCY COST (P.A.)</b>	<b>£54,580</b>







## LOCATION & SITUATION

# LOCATED IN MARBLE ARCH

Portman Street is perfectly situated on the periphery of the sophisticated Mayfair and amidst the charm of Marylebone. This prime West End location places you moments from Oxford Street, Bond Street, and Marble Arch, surrounded by London's finest hotels, private members' clubs, and luxury retailers.

With Bond Street Station within easy reach, the Elizabeth Line, Jubilee Line and Central Line provide great access across London.



## RESTAURANTS

1. 28-50 By Night
2. The Ivy
3. Cavita
4. Delamina
5. Fishworks
6. Granger & Co.
7. Kima
8. Le Relais de Venise
9. Le Vieux Comptoir
10. Lina Stores
11. OP SO
12. Ottolenghi
13. St. John
14. Taka
15. Trishna
16. Mercato Mayfair
17. Flat Iron

## BARS & CAFÉS

18. EL&N
19. Blank Street
20. WatchHouse
21. The Coach Makers Arms
22. The Three Tuns
23. The Marylebone
24. Hagen
25. Half Million Café
26. The Monocle Café
27. The Parlour
28. Claridge's Bar
29. Scales Cocktail Bar

## CONNECTIVITY

MARBLE ARCH	3 mins
BOND STREET	6 mins
BAKER STREET	9 mins
OXFORD CIRCUS	11 mins



---

## FURTHER INFORMATION

### LEASE

A new effective Full Repairing and Insuring lease contracted outside the Landlord and Tenant Act 1954 is available direct from the landlord for a term to be agreed.

### POSSESSION

Upon completion of legal formalities.

### LEGAL COSTS

Each party is to be responsible for their own legal costs.

### EPC

42 B

### VAT

TBC

### FLOOR PLANS

TBC

## CONTACT US

**Jim Clarke**

020 7927 0631

Jim@rib.co.uk

**Matthew Mullan**

0207 927 0622

Matthewm@rib.co.uk

**Tom D'Arcy**

020 7927 0648

Thomas@rib.co.uk

**Henry Bacon**

020 7927 0646

Henry@rib.co.uk

**RIB**

ROBERT IRVING BURNS

---

Misrepresentation Act 1967.

These particulars are intended only to give a fair description of the property and do not form the basis of a contract or any part thereof. These descriptions and all other information are believed to be correct but their accuracy is in no way guaranteed. April 2026