



DANTZIC

NOMA | MANCHESTER



DANTZIC

NOMA | MANCHESTER



NOMA



4,790 SQ FT – 42,782 SQ FT
GREAT CREATIVE OFFICE SPACE
IN ONE OF NOMA'S HISTORIC
WAREHOUSE BUILDINGS





LOCATION



- Angel Meadow Park
- Angel Gardens
- One Angel Square
- The Northern Quarter
- Manchester Piccadilly Station
- Shudehill Transport Interchange
- Sadler's Yard
- 
- The Printworks
- Manchester Victoria Station
- National Football Museum
- Manchester Arndale
- Exchange Square
- The Corn Exchange
- Manchester Town Hall
- Manchester Cathedral
- Manchester Arena
- Royal Exchange Theatre
- Manchester Central
- Beetham Tower
- Spinningfields

Manchester is the largest and fastest growing regional capital in the UK, with 80 members of the FTSE 100 already based here.

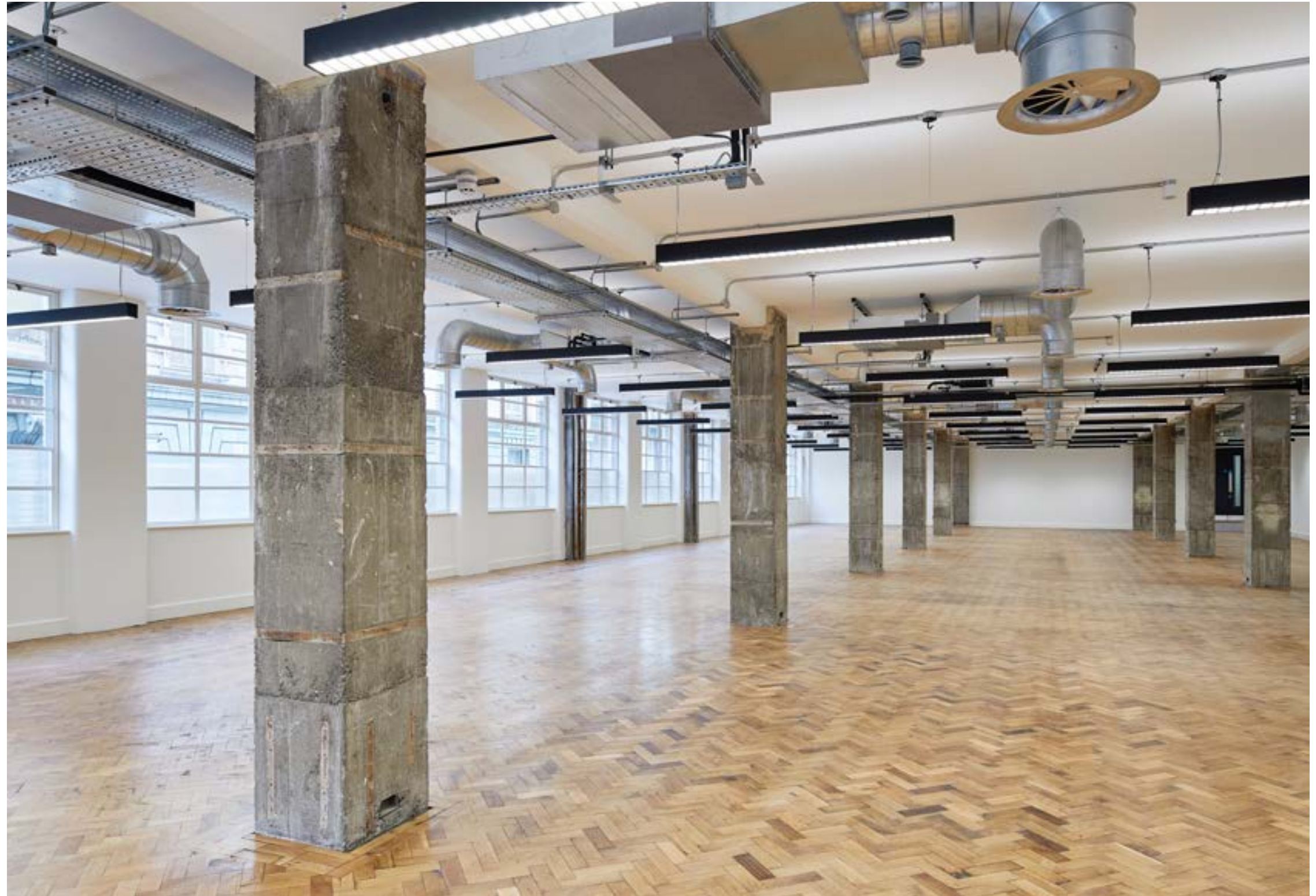
The 20-acre (8.08 hectare) NOMA scheme is situated between the city centre's largest park (Angel Meadow), the main shopping and leisure destinations (the Manchester Arndale Centre and the Northern Quarter) and two major transport hubs (Manchester Victoria Station and the Shudehill Transport Interchange).



Adjoining Federation, Dantzig is a fine example of art deco design and comprises six upper floors of unique workspace with real character.

For businesses with the ambition to try something different, Dantzig provides an environment that invigorates the mind and challenges the conventional.





SPECIFICATION

- Open plan blank canvas work space
- New reception design
- Original parquet flooring
- Exposed soffit and original ceiling detailing
- LCD feature pendant lighting
- Two new passenger lifts
- New w/c and shower facilities

- Natural ventilation through new openable double-glazed windows
- VRF heating and cooling
- Cycle storage facilities
- EPC C rating
- Set to achieve BREEAM 'Very Good'
- Wirescore 'Platinum' connectivity rating





Indicative CGI: Typical floor

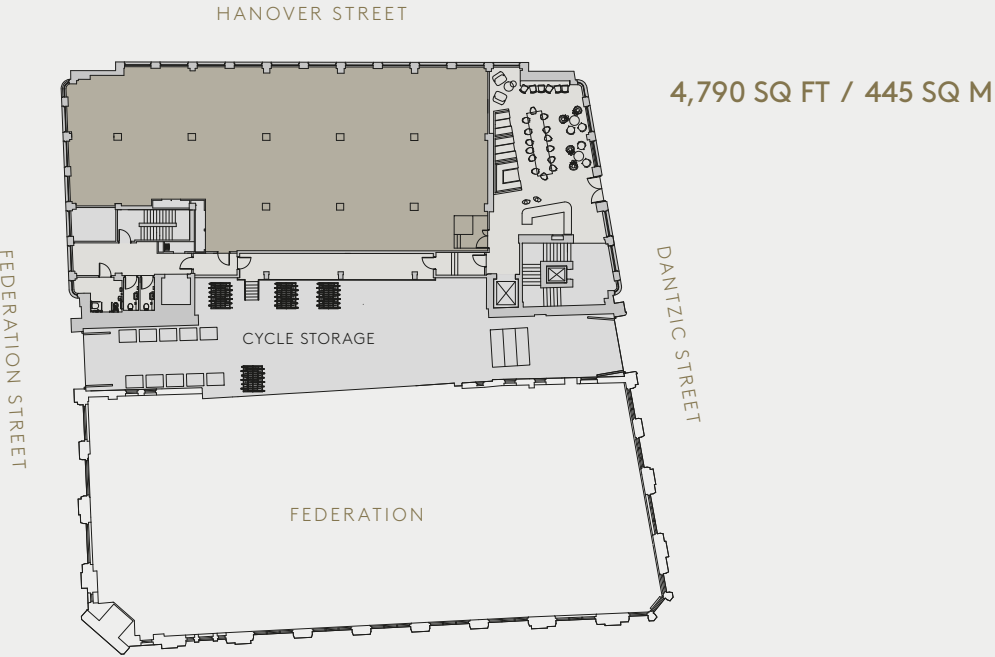


SCHEDULE OF AREAS

OFFICES	NIA (SQ FT)	NIA (SQ M)
Sixth floor	5,594	520
Fifth floor	6,006	558
Fourth floor	6,598	613
Third floor	6,598	613
Second floor	6,598	613
First floor	6,598	613
Ground floor	4,790	445
Total offices	42,782	3,975

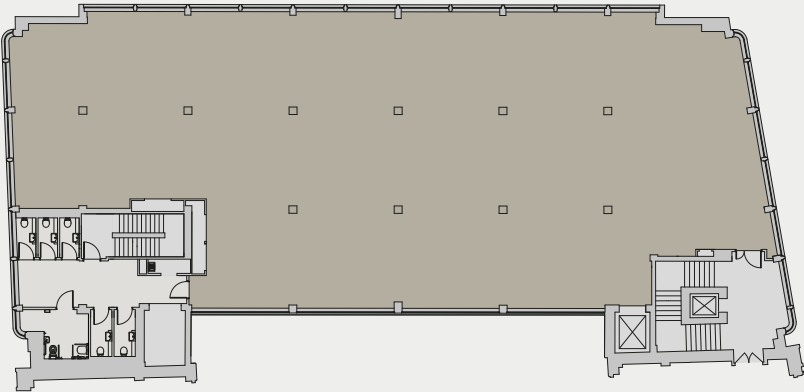
FLOOR PLANS

GROUND



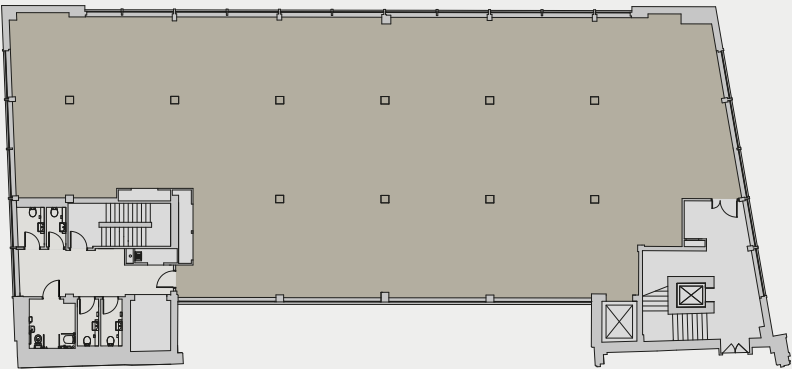
TYPICAL UPPER
(THIRD)

6,598 SQ FT / 613 SQ M



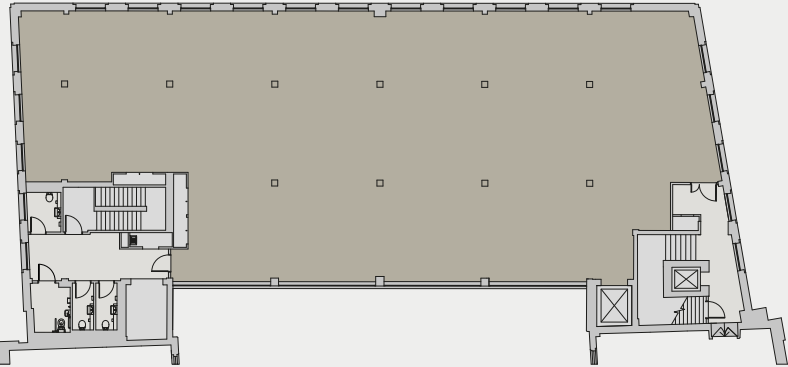
FIFTH FLOOR

6,006 SQ FT / 558 SQ M



SIXTH FLOOR

5,594 SQ FT / 520 SQ M





CONNECTIVITY

Located between two of Manchester’s main transport hubs – Manchester Victoria Station and Shudehill Transport Interchange – Dantzic is within three minutes walk of train, Metrolink and bus connections that serve the city, the North West and beyond.

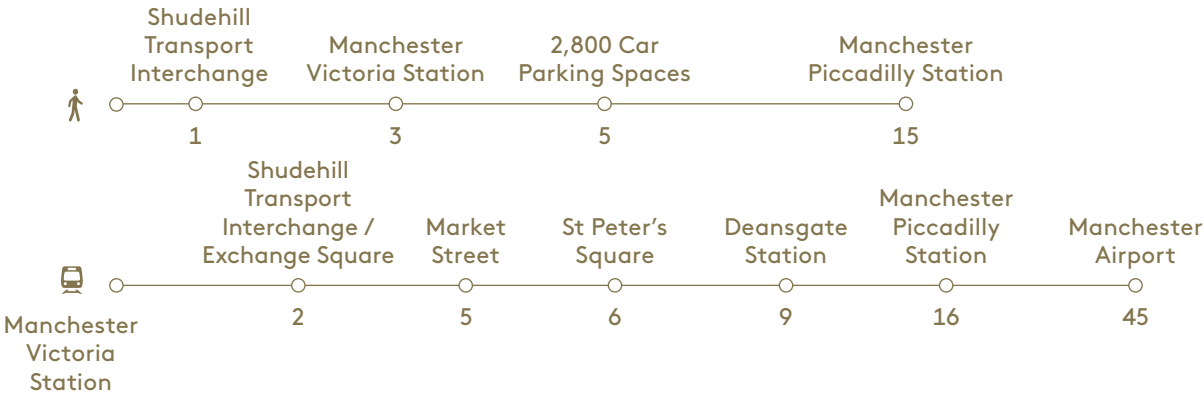
Manchester Piccadilly, just a 15 minute walk away, is two hours from London by train, with three trains per hour. The inner city ring road is adjacent to NOMA, offering easy car access.

The neighbourhood is also well served by multi-storey and surface car parks with more than 2,800 parking spaces five minutes away.

With a state-of-the-art fibre optic network built into NOMA’s infrastructure, the neighbourhood and the building offer future-proof carrier diverse connectivity services to tenants.



WALK / TRAM TIMES (MINS)



DRIVE / TRAIN TIMES (MINS)



- KEY
- Metrolink & stops
 - Ordsall Chord
 - Parking



(01)

AMENITIES

Dantzie is adjacent to Manchester’s leisure and retail core.

The city’s food and drink scene is hugely diverse, with something for every occasion and budget. It ranges from the mass market bars and restaurants at The Printworks through to destination locations such as Deansgate, King Street and the Northern Quarter — renowned for its independent eateries and bars.

New Cathedral Street boasts a selection of high-end retail names including Selfridges and Harvey Nichols, with Exchange Square offering a focal point for seasonal markets and city events. The Manchester Arndale, home to over 200 stores, is the UK’s largest inner city shopping centre, attracting 42 million visitors annually.

Also on Dantzie’s doorstep is Sadler’s Yard, a popular meeting place for weekday lunches and after work get-togethers, with its own curated events programme and The Pilcrow Pub. New for 2019 at NOMA is The Old Bank Residency, a collaborative project inhabiting a fantastic historic building that is bringing together creatives and the community for a host of special happenings.



(02)

- (01)

The Pilcrow Pub, Sadler’s Yard

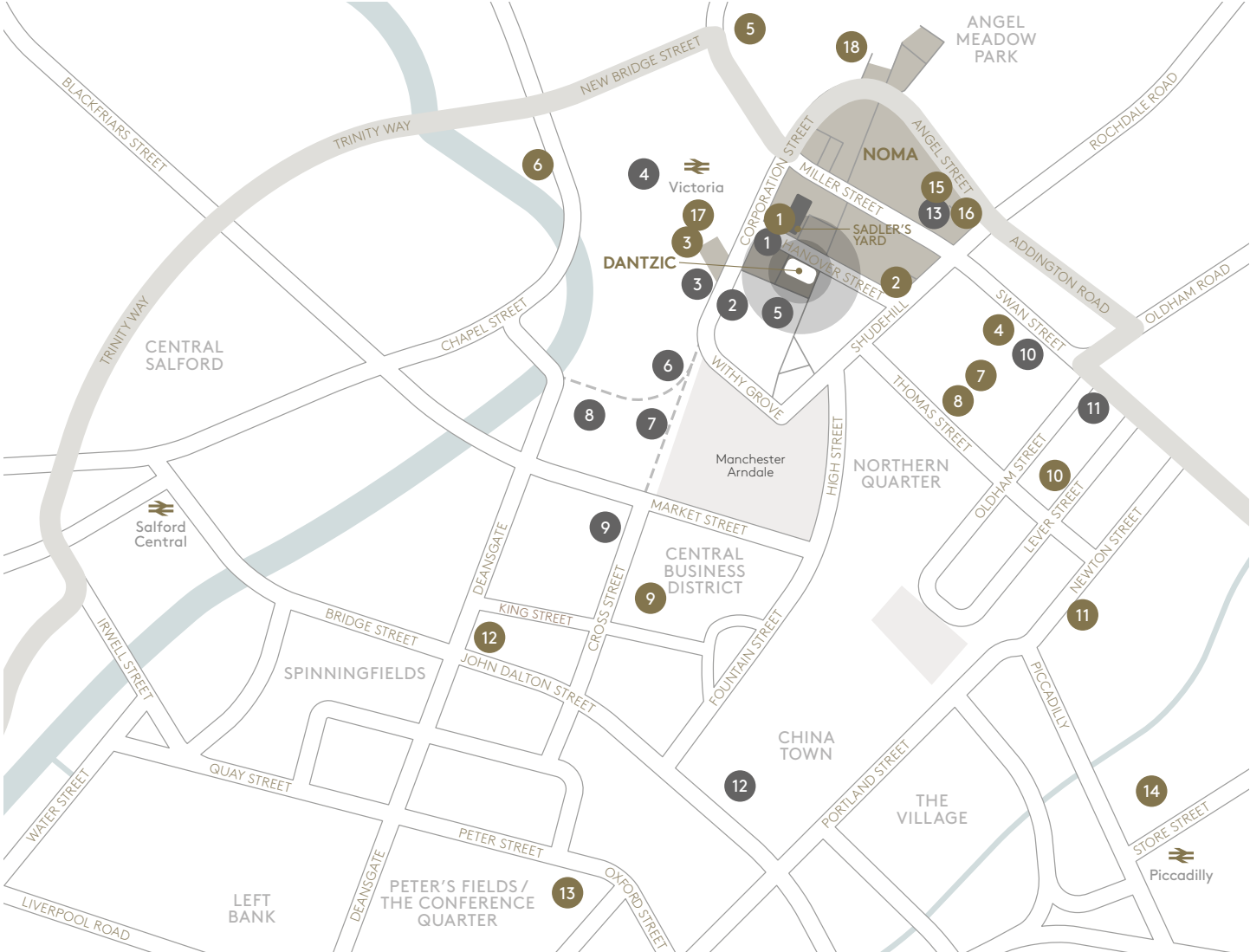
From modern and seasonal craft ale, to loose leaf teas and locally sourced coffee.

Hanover Street, M60 0AB
- (02)

Teacup Kitchen

Award winning café and restaurant at the heart of Manchester’s Northern Quarter.

53–55 Thomas Street, M4 1NA



CULTURE, ENTERTAINMENT & LEISURE

- 1

The Old Bank Residency

1 min
- 2

Nuffield Gym

3 mins
- 3

National Football Museum

3 mins
- 4

Manchester Arena

3 mins
- 5

The Printworks

3 mins
- 6

The Corn Exchange

4 mins
- 7

Selfridges

5 mins
- 8

Harvey Nichols

6 mins
- 9

Royal Exchange Theatre

7 mins
- 10

Band on the Wall

7 mins
- 11

The Frog & Bucket

8 mins
- 12

Manchester Art Gallery

13 mins
- 13

Hero

2 mins

EATING & DRINKING

- 1

The Pilcrow Pub

1 min

Modern craft ales and loose leaf teas
- 2

The Pasta Factory

2 mins

A real Italian experience
- 3

Mamucium Restaurant & Bar

2 mins

Serving high-end locally-sourced food
- 4

The Mackie Mayor Food and Beer Hall

3 mins

With communal eating
- 5

RBG Bar & Grill

5 mins

Premiere restaurant within the Park Inn by Radisson
- 6

Umezushi

6 mins

Authentic Japanese cuisine
- 7

Common

6 mins

US diner-style classics and bakery
- 8

Teacup Kitchen

6 mins

Award-winning restaurant and tearoom
- 9

MashTun

9 mins

Specialist craft beer and live music bar
- 10

Pie & Ale

10 mins

Handmade pies, cask ales & fine spirits
- 11

Cottonopolis

11 mins

Asian fusion bar / restaurant
- 12

La Bandera

11 mins

Classic Spanish cuisine
- 13

The French

15 mins

Modern British food by chef Adam Reid
- 14

The Place

15 mins

Sleek, modern bistro
- 15

The Co-op

1 min

Convenience shop
- 16

Pot Kettle Black

2 mins

Coffee and eatery
- 17

M&S

2 mins

Simply Food
- 18

Pop-up Bike Shop

4 mins

Coffee and bike repair

- (01) **Mowgli**
Authentic Indian street food in the city.
The Corn Exchange, M4 3TR
- (02) **Cane & Grain**
A hidden hideaway in Manchester's Northern Quarter — serving up ribs, rum, bourbon and beer — spread across three themed floors.
49–51 Thomas St, M4 1NA
- (03) **Banyan Bar & Kitchen**
A stylish and genuine bar serving beautiful food and drink all day long.
The Corn Exchange, M4 3TR



(01)



(02)



(03)

THE NOMA STORY —
ALREADY HOME TO...

AMAZON WEB SERVICES

First HQ outside of London. 600 Technology Research and Development jobs created. WeWork creating inspiring office space in Hanover for growing technology businesses.

CO-OP DIGITAL

The innovation lab and community co-working space driving new products, services and culture as part of The Co-op brand and Manchester’s digital economy. Home to 56 businesses and innovators with a community focused ethos.

THE CO-OP

HQ of the UK’s largest community food retailer and a BREEAM Outstanding office building.

SCAN-STICK

Locally grown visual signage and branding solutions for the creative industry.

SPARKLESTREET

Exciting events and entertainment company driving Manchester’s reputation as a city at the forefront of cultural creativity.



CURATING A NEIGHBOURHOOD, THE NOMA STORY






20
ACRES

Made up of new homes, offices, hotels, retail and leisure space around vibrant urban spaces and public realm



4M
SQ FT



The best connected city centre location in Manchester



Access to 1GBps wi-fi speeds

6,000

6,000 people currently work in NOMA



Site of the world's first steam-powered mill, home to The Co-op for more than 160 years, next to the city centre's only green park — Angel Meadow



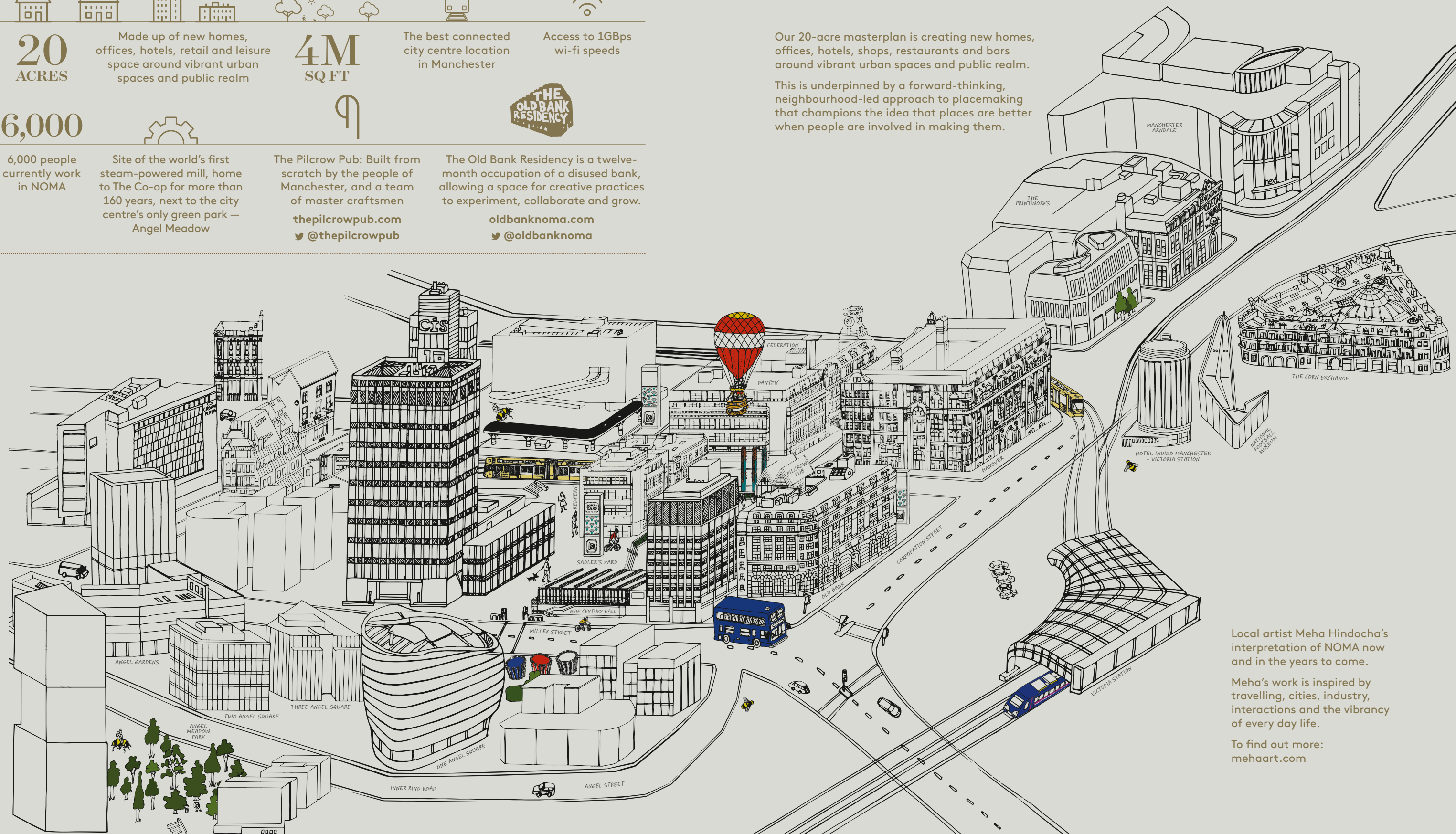
The Pilcrow Pub: Built from scratch by the people of Manchester, and a team of master craftsmen
thepilcrowpub.com
[@thepilcrowpub](https://twitter.com/thepilcrowpub)



The Old Bank Residency is a twelve-month occupation of a disused bank, allowing a space for creative practices to experiment, collaborate and grow.
oldbanknoma.com
[@oldbanknoma](https://twitter.com/oldbanknoma)

Our 20-acre masterplan is creating new homes, offices, hotels, shops, restaurants and bars around vibrant urban spaces and public realm.

This is underpinned by a forward-thinking, neighbourhood-led approach to placemaking that champions the idea that places are better when people are involved in making them.



Local artist Meha Hindocha's interpretation of NOMA now and in the years to come.

Meha's work is inspired by travelling, cities, industry, interactions and the vibrancy of every day life.

To find out more:
mehaart.com



A Development by



Address

Dantzic
Dantzic Street
NOMA
Manchester M60 0AF

CONTACT



0161 831 3300
www.colliers.com/uk

Peter Gallagher
peter.gallagher@colliers.com
D +44 (0)161 831 3361
M +44 (0)7812 971560



James Devany
james.devany@eu.jll.com
D +44 (0)161 238 6233
M +44 (0)7525 582901



NOMA

NOMA Digital Blueprint
is available on iPad.



#WeLoveMCR

Misrepresentation Act: Colliers and Jones Lang LaSalle and for themselves and for the vendor/lessor as agents for the vendor/lessor give notice that:
1. The information in these particulars is intended as a general outline only for the guidance of intending purchasers/lessees and neither Colliers, Jones Lang LaSalle nor the vendor/lessor on whose behalf these particulars are provided accept any responsibility for any inaccuracies the particulars may contain. Any intending purchaser/lessee should not rely upon them as statements or representations of fact but should satisfy themselves by inspection or otherwise as to their correctness. All floor areas and other measurements are approximate. 2. These particulars do not form, or form any part of, any offer or contract. 3. Neither Colliers, Jones Lang LaSalle nor any of their employees has any authority, either orally or in writing, to make or give any representations or warranties in relation to the property. 4. Unless otherwise stated, all prices and rents are quoted exclusive of VAT. October 2019.

The Code of Practice on Commercial Leases in England and Wales recommends you seek professional advice before agreeing a business tenancy. The Code is available through the website: www.commercialleasecodeew.co.uk

siren | +44 (0)20 7478 8300 | sirendesign.co.uk | S011717



[NOMA-MANCHESTER.COM/DANTZIC](https://noma-manchester.com/dantzic)