

# WESTLAND PLACE OLD STREET

N1 7NP

Number of Desks  
up to 30

Price  
£16,500

# BASE

ANY OFFICE, MANAGED.



**BASE**





## THE BUILDING

Step into history with this 200-year old fire station turned office space. Embrace the character of exposed brick walls and original wooden floors that seamlessly blend the past with modern functionality. This unique conversion offers a distinctive work environment, marrying original charm with contemporary style.

## AVAILABILITY

FLOOR	STATUS	SIZE	£ SQ FT	RENT
1st	Available	1,700 SqFt	116	£16,500

## AMENITIES



Air Conditioning



Call Booths



Private Kitchen



Customisable



Plug & Play



Meeting Room



Excellent Natural Light



Great Transport Links



Shower Facilities

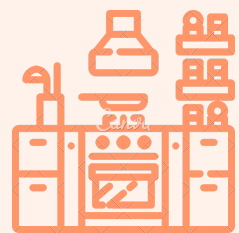
## WHAT'S INCLUDED?

We deliver a comprehensive managed solution saving you time, money, and energy. Our goal is to make your office an inspiring environment where your team can effortlessly come together to achieve great things.



### SIMPLE PAYMENT TERMS

An all inclusive monthly fee making the overheads easy to manage & forecast. Rent, business rates, utilities, service charge, all baked into one. It's that simple!



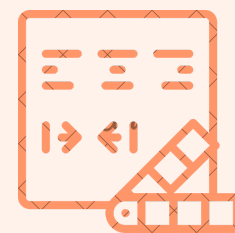
### FULLY EQUIPPED KITCHENS

Our commitment includes fully equipped kitchens so you and your team can cook up a storm in the office.



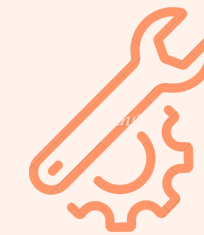
### TECH ENABLED SPACES

Securely managed Wifi with resilient infrastructure and easy to use meeting room facilities.



### CUSTOMISATION

We recognise the significance of individual drivers, values, and ambitions in the realm of office spaces so we delve into your requirements to offer a tailored solution that suits.



### MAINTENANCE

Up-keep, cleaning and general maintenance on an ongoing basis to make sure the space remains fresh & functional.



### 24/7 CUSTOMER SUPPORT

Throughout the tenancy, our 24/7 customer support team is always on hand to ensure the workspace runs as smoothly as it did from day one.

# THE SPACE

BASE



# THE SPACE

BASE



# THE SPACE

BASE

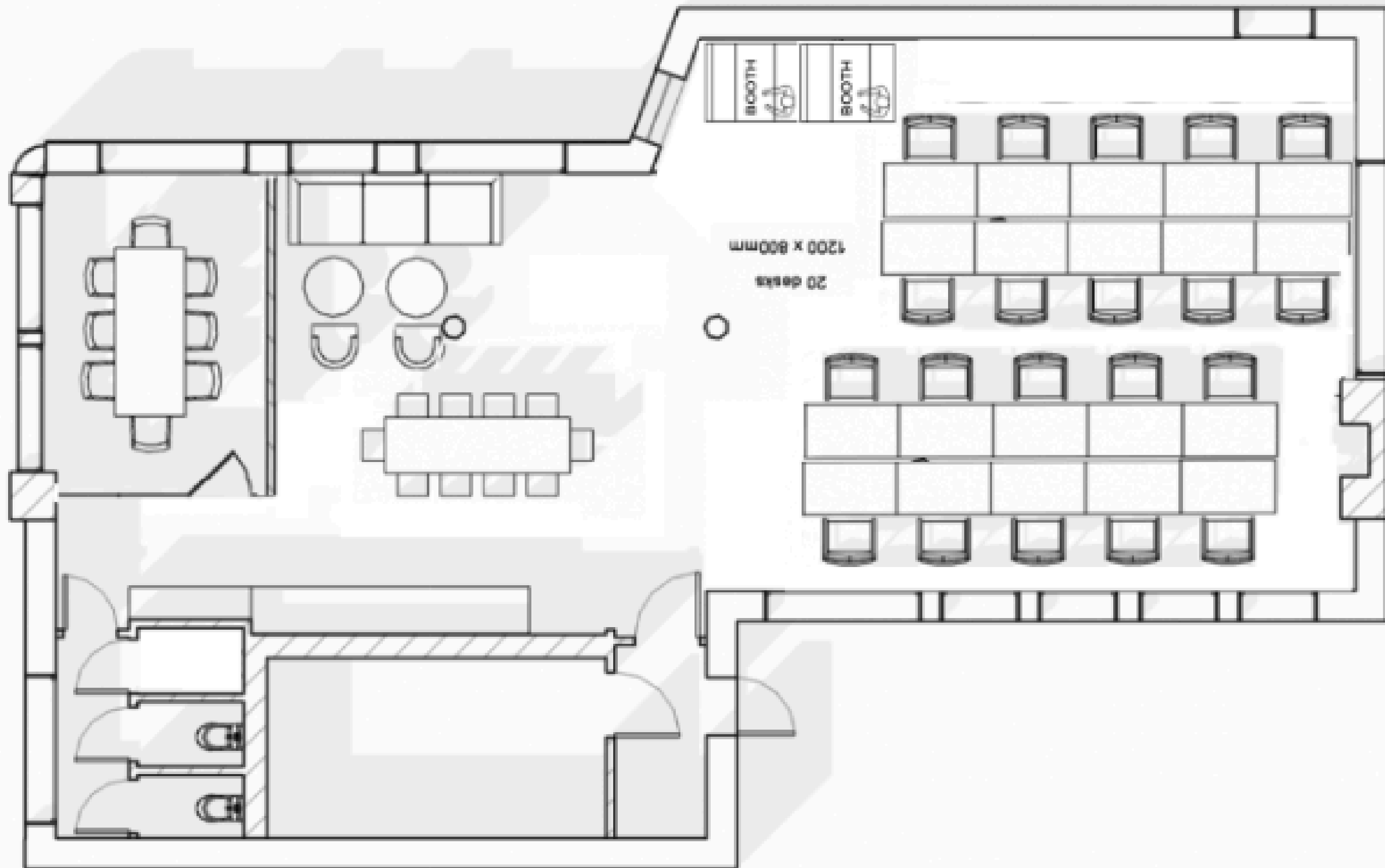


THE SPACE

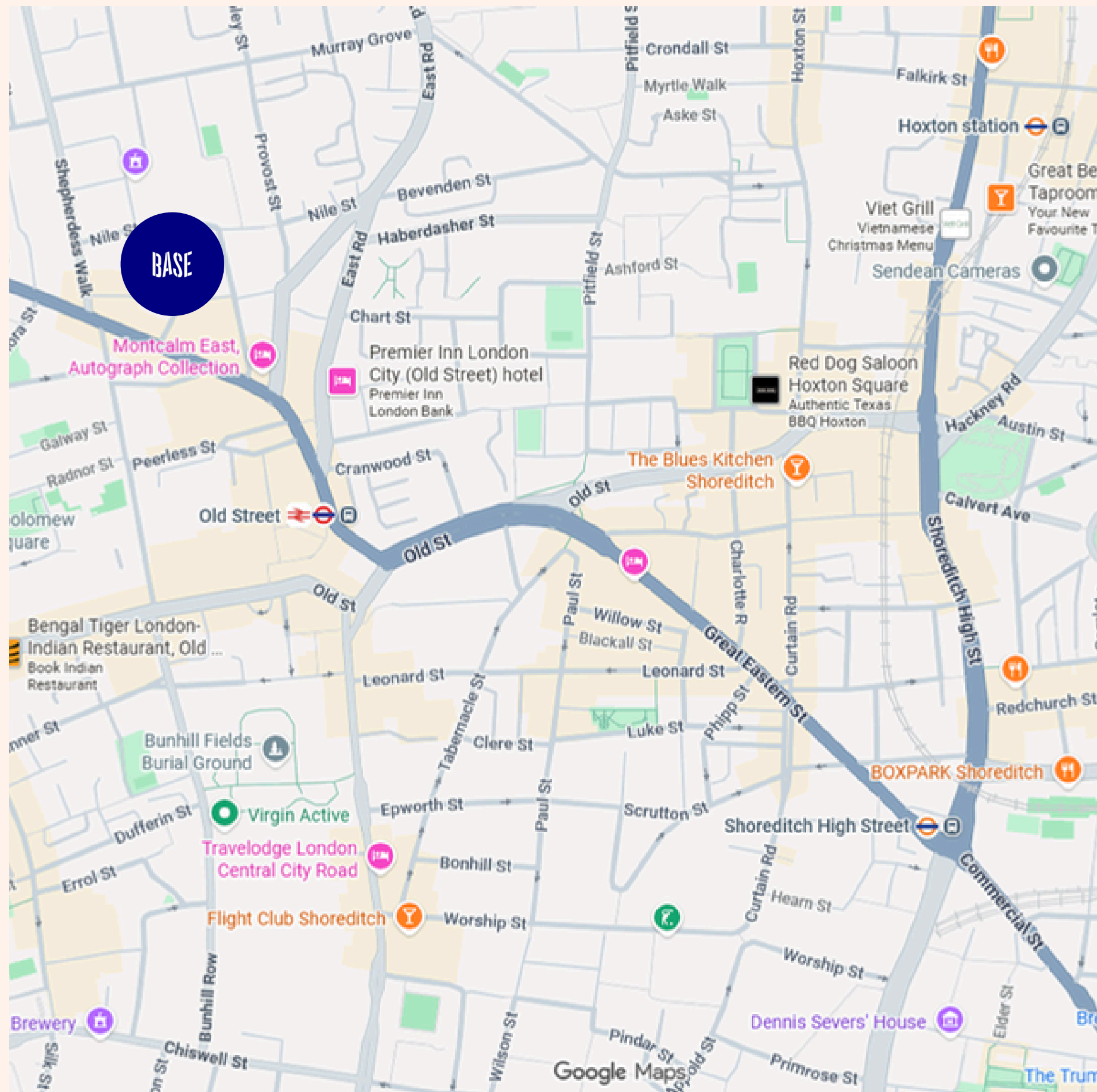
BASE



# THE SPACE



# LOCATION



# TRANSPORT

Discover the vibrant charm of Old Street and Shoreditch's bars and restaurants, where eclectic flavours and trendy atmospheres converge. Immerse yourself in a dynamic culinary scene, ranging from avant-garde cocktail bars to cozy eateries, offering a delightful fusion of global cuisines.

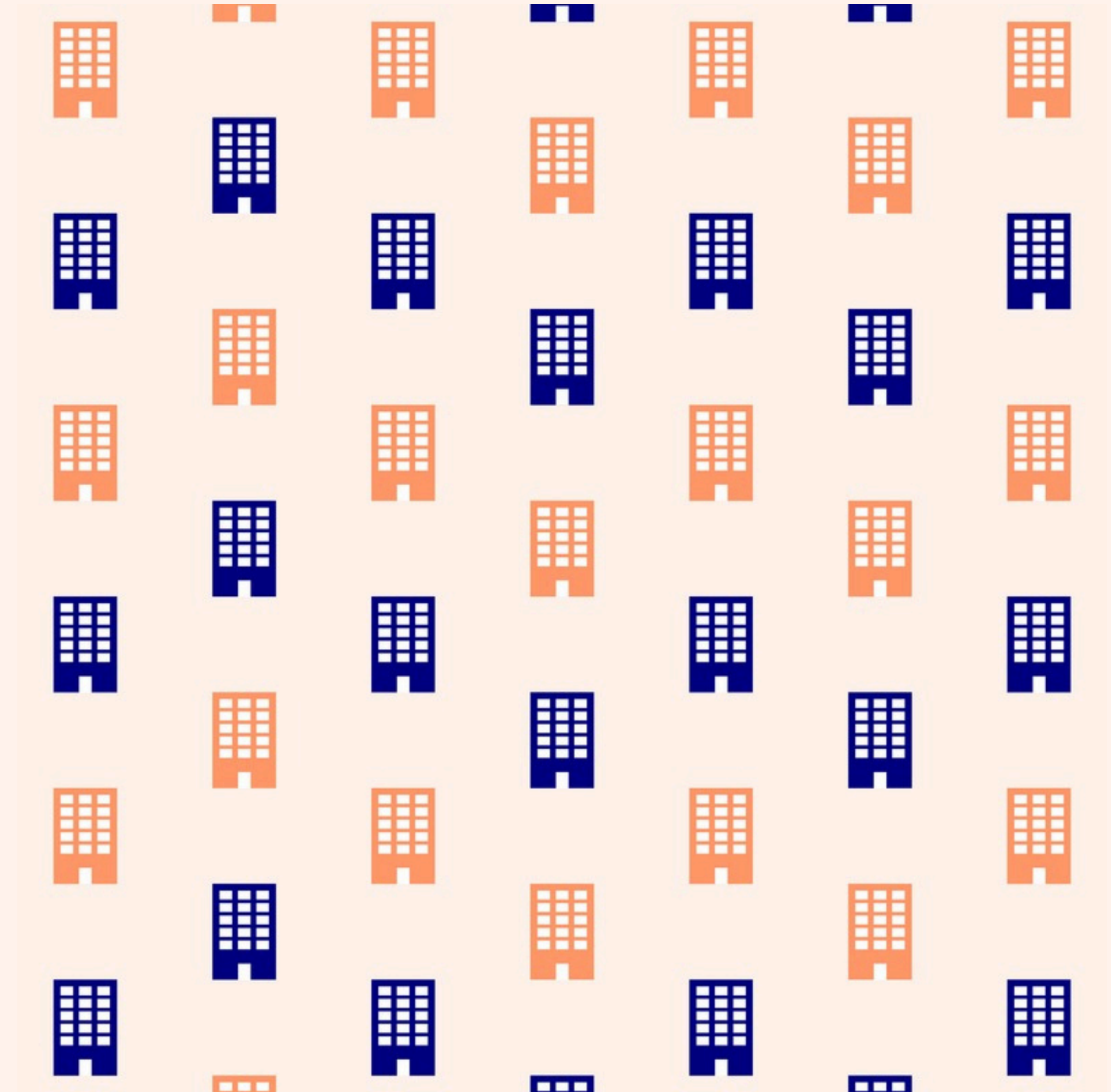
- **Shoreditch High Street:** 9 minutes
- **Liverpool Street:** 13 minutes
- **Old Street:** 2 minutes

## ABOUT US

Base was founded in 2015 by two tech entrepreneurs who struggled to find a stress-free, high-end, and flexible office space. Frustrated with inadequate options, they decided to create their own solution focused on what truly matters in a workspace.

Today, Base has expanded across London, providing stylish, hassle-free offices for like-minded businesses. We simplify the process with a flat fee, handling all the details so you don't have to.

Our offices are fully equipped from day one, complete with essentials like milk and beer in the fridge. Just sit down and get to work. We also collaborate with talented interior designers to ensure each office has a stunning vibe.



For viewings or further information:

Michael Dean  
+44 (0) 7944 912 815  
michael@baseoffices.london  
www.baseoffices.london

**BASE**

ANY OFFICE, MANAGED.