

Building A2

From 267 sq ft available to let



Located close to the main entrance of Cody Technology Park, Building A2 offers a range of office, R&D, and laboratory spaces from 267 sq ft. A2 is well suited to organisations requiring flexible space, with the option to tailor layouts to meet specific operational needs.

A comprehensive refurbishment of the reception / business lounge, and office accommodation is to complete in Q2 2026. Several ground floor units feature dedicated external access, making them particularly suitable for R&D and laboratory use. All units benefit from shared amenities, including kitchens, breakout areas, and shower facilities.



SPECIFICATION

- New suspended ceiling with LED lighting
- Typical slab to slab 3.20m
- New air conditioning
- Raised access to floor with 210mm void
- Dry laboratory units on first floor
- EPC B
- Car parking ratio of 1:330 sq ft

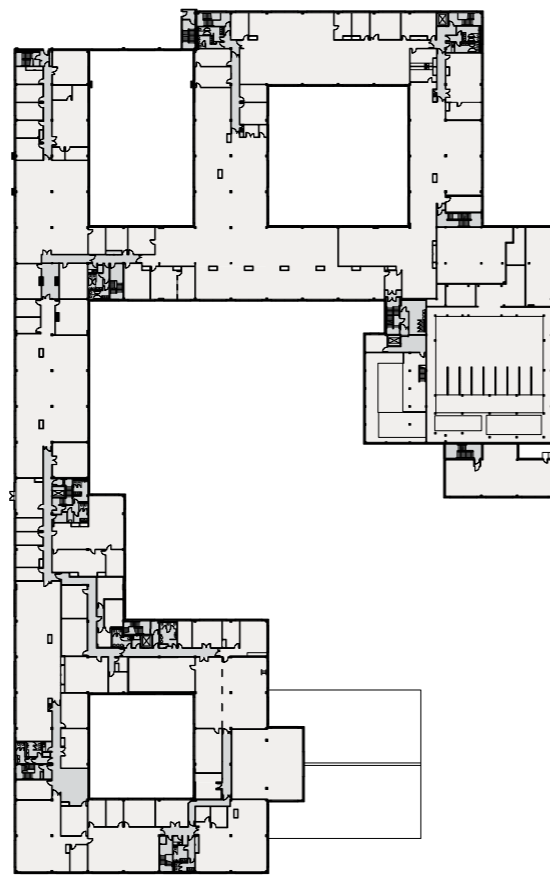
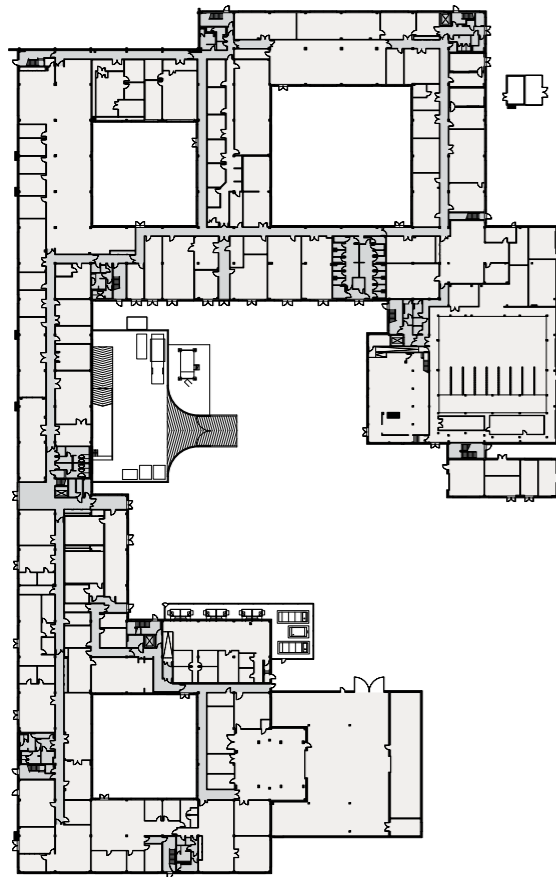
AVAILABILITY

FLOOR	UNIT	SQ FT	TYPE
First	1001A	432	Lab, storage
First	1001B	810	Lab
First	1001K	1,224	Office
First	1001H	1,643	Office
First	1064	2,063	Office
First	1070 - 1073	2,140	Office
Ground	G001 - G002	1,900	Lab, storage, R&D
Ground	G030	267	Office
Ground	G031	533	Office
Ground	G032 - G033	515	Lab
Ground	G036	311	Lab
Ground	G037	299	Lab
Ground	G041	611	Lab
Ground	G054	560	Lab
Ground	G056 - G057	1,756	Office
Ground	G123	715	Office



● GROUND FLOOR

● FIRST FLOOR



AMENITIES

- Shower facilities
- Passenger and goods lift
- 24/7 security and guarded entrance
- 24hr gym with classes
- 100 seat lecture theatre
- Conferencing facilities for up to 200 people
- 200 seat restaurant
- 100 seat café and informal meeting area
- Eelmoor Marsh – 66 hectare SSSI accessible by tenants

LOCATION

Cody Technology Park in Farnborough is well situated for convenient access by road, rail, and air. Located near Junction 4A of the M3, it offers direct routes to London and nearby towns such as Guildford, Woking, and Basingstoke.

The park is served by Farnborough mainline railway station, with a subsidised bus connecting it to the site, making London Waterloo reachable in under an hour.

Farnborough Airport is just five minutes away and provides private jet services, while Heathrow and Gatwick airports are both within easy driving distance.

By road



FARNBOROUGH	6 MINUTES
BASINGSTOKE	20 MINUTES
GUILDFORD	24 MINUTES
WOKING	30 MINUTES
READING	40 MINUTES
LONDON	55 MINUTES

By rail

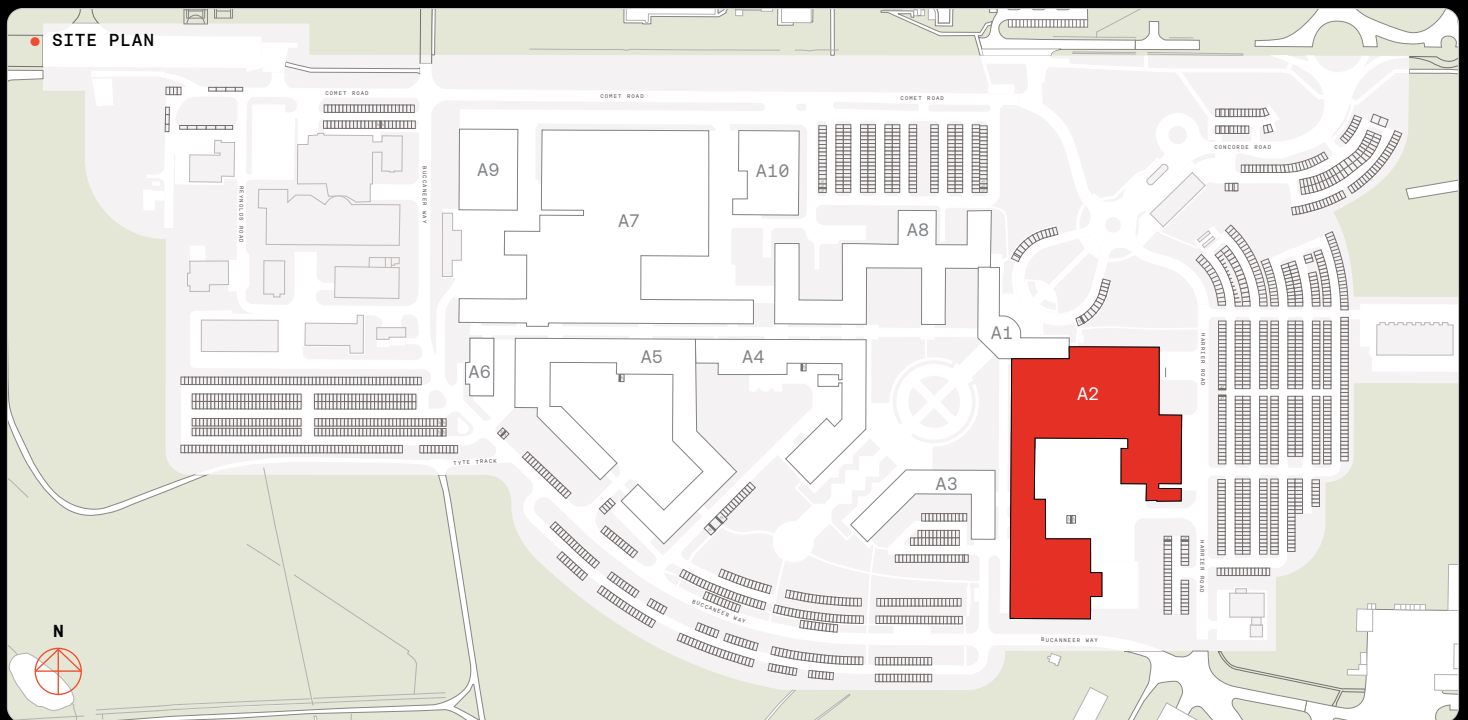


WOKING	9 MINUTES
GUILDFORD	17 MINUTES
BASINGSTOKE	17 MINUTES
READING	27 MINUTES
LONDON WATERLOO	35 MINUTES

By air



FARNBOROUGH AIRPORT	5 MINUTES
HEATHROW AIRPORT	30 MINUTES
GATWICK AIRPORT	55 MINUTES



CONTACT

DISCLAIMER: Hollis Hockley and Curchods & Co for themselves and for the landlords of this property whose agents they are, give notice that the particulars are set out as a general outline only for the guidance of intending purchasers and do not constitute part of an offer or contract. All descriptions, dimensions, references to condition and necessary permissions for use and occupation and their details are given in good faith and are believed to be correct, but any intending purchasers should not rely on them as statements or representations of fact, but must satisfy themselves by inspection or otherwise as to the correctness of them. Unless otherwise stated, all prices, rents and other charges are quoted exclusive of value added tax (VAT). April 2026. Reference: 2604001. jamesjames.design