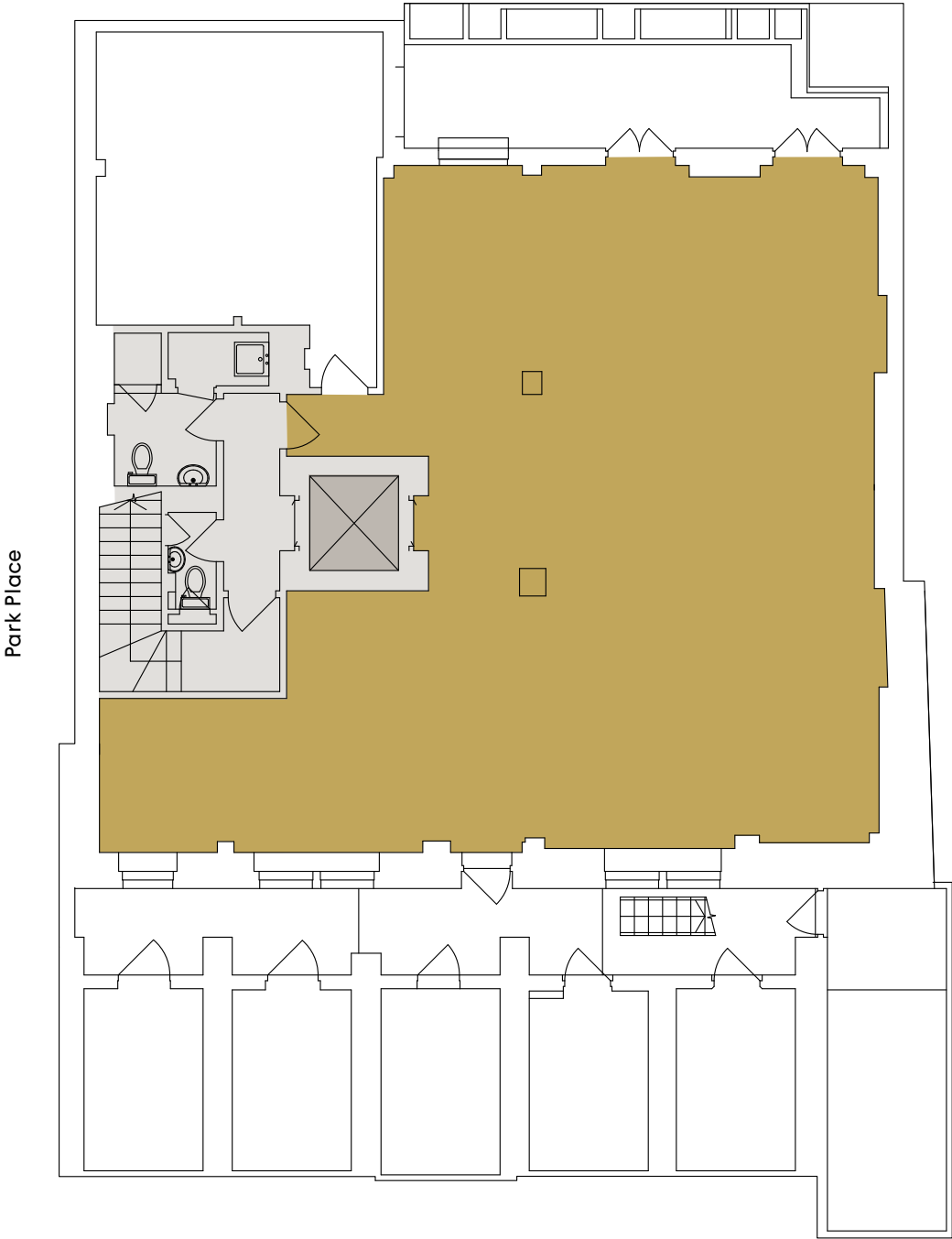


10-11 PARK PLACE

St James's / SW1

Lower Ground Floor Plan - 1,136 Sq Ft (105.8 Sq M)



■ Office ■ Lift ■ Core

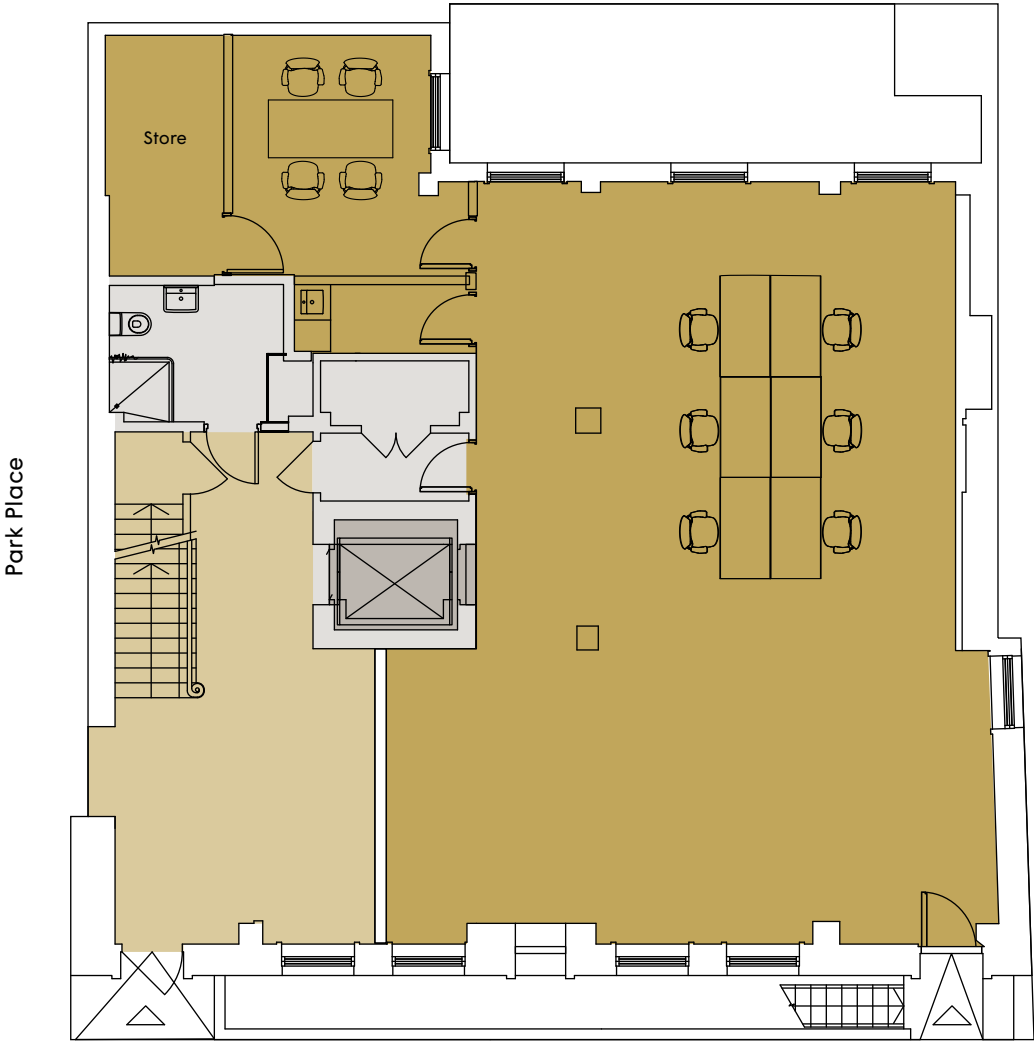
Plans are for indicative purposes only, not to scale.



10-11 PARK PLACE

St James's / SW1

Ground Floor Plan - 1,337 Sq Ft (124.2 Sq M)



■ Office ■ Reception ■ Lift ■ Core

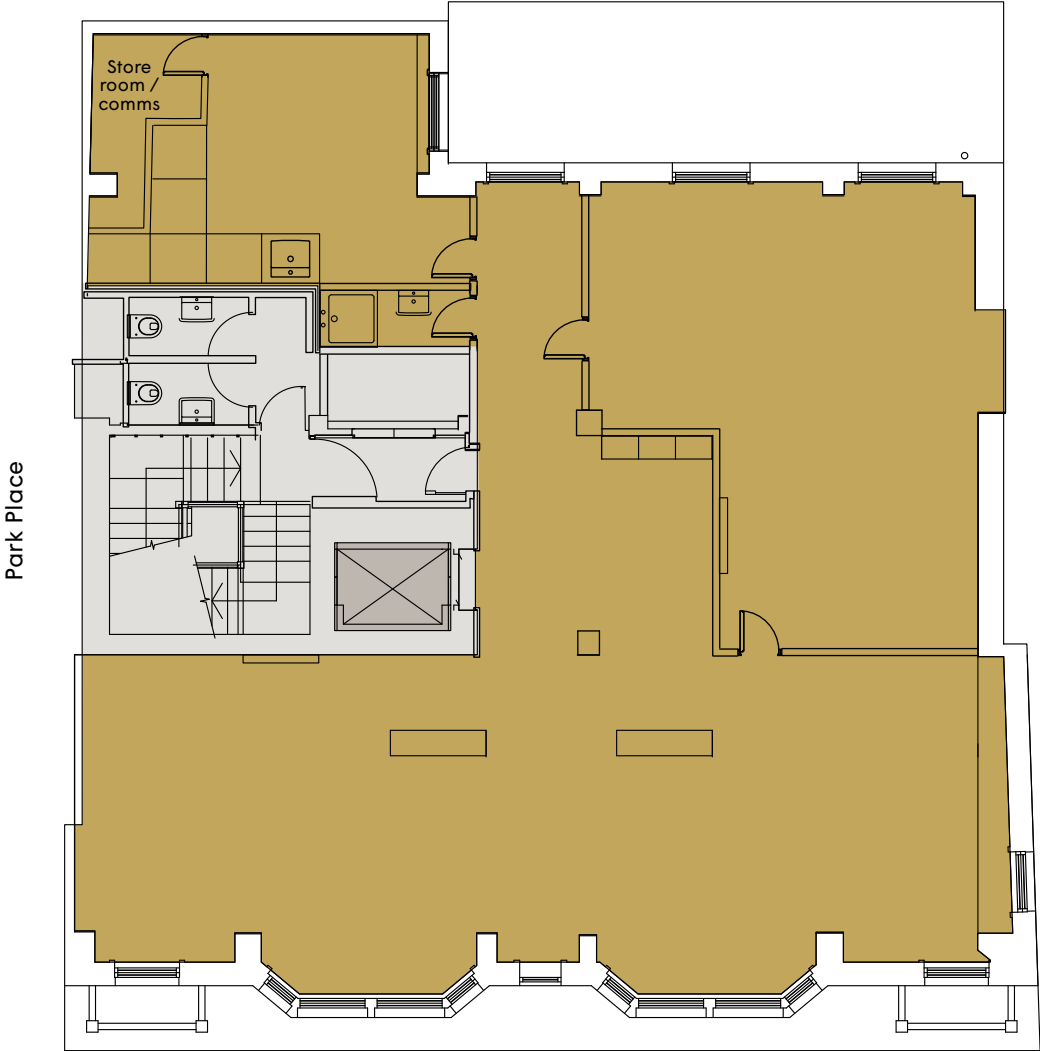
Plans are for indicative purposes only, not to scale.



10-11 PARK PLACE

St James's / SW1

First Floor Plan - 1,679 Sq Ft (156.3 Sq M)



■ Office ■ Lift ■ Core

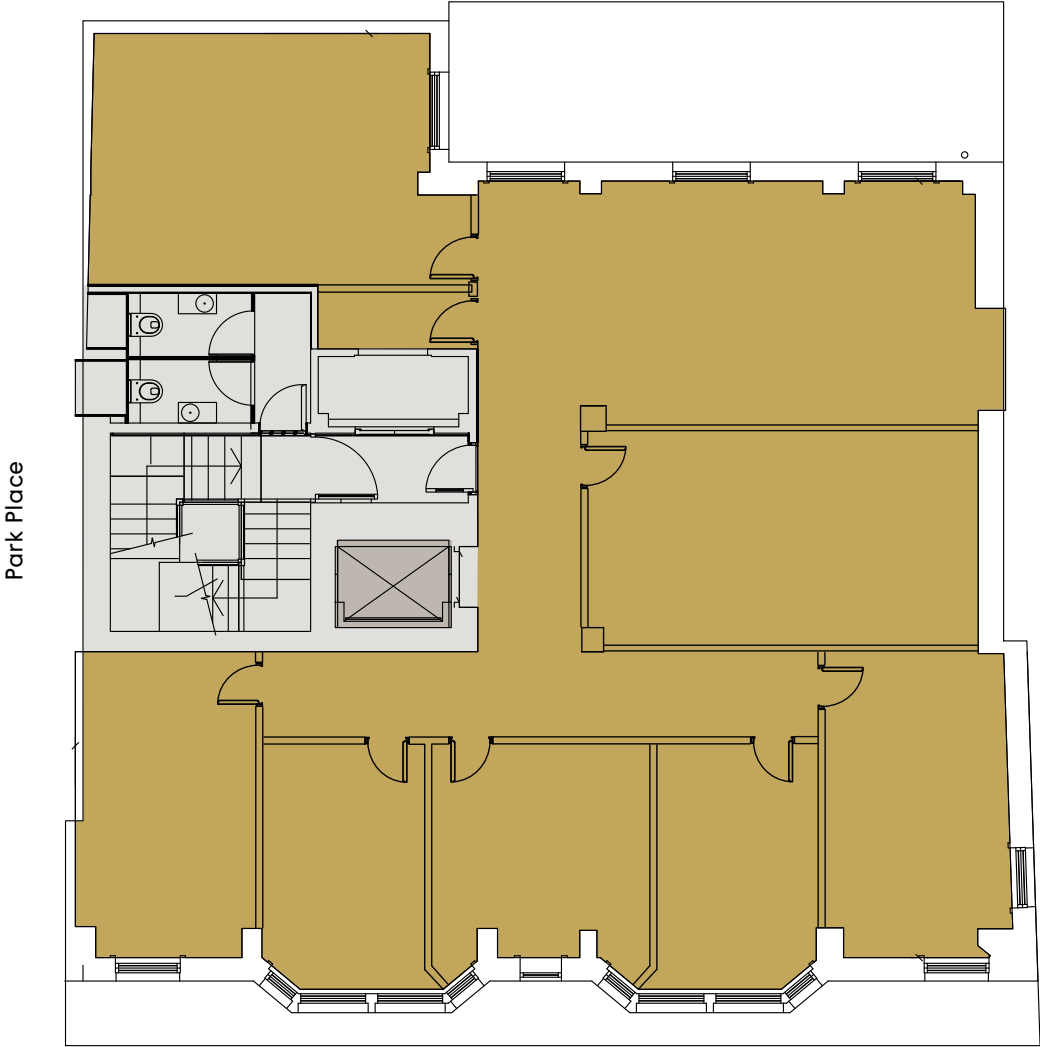
Plans are for indicative purposes only, not to scale.



10-11 PARK PLACE

St James's / SW1

Second Floor Plan - 1,679 Sq Ft (156.3 Sq M)



Office Lift Core

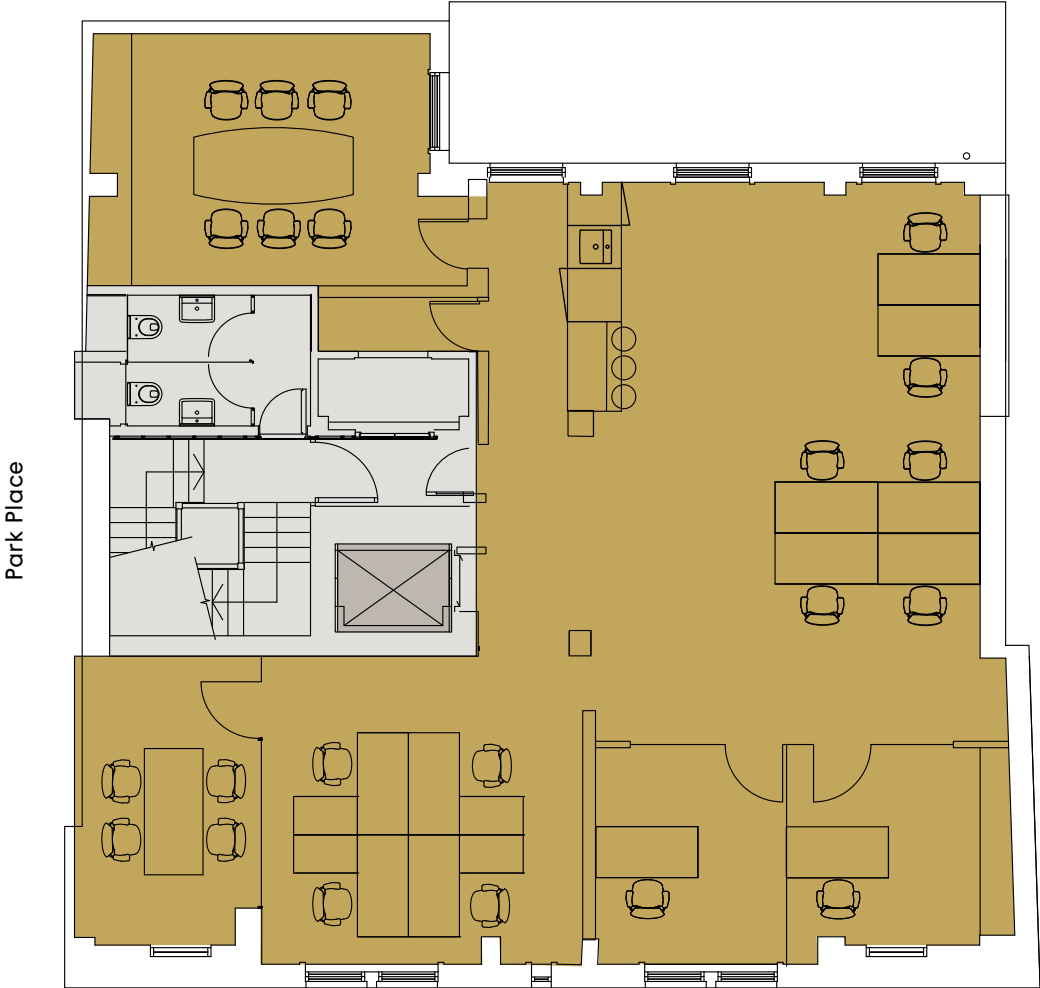
Plans are for indicative purposes only, not to scale.



10-11 PARK PLACE

St James's / SW1

Third Floor Plan - 1,611 Sq Ft (150 Sq M)



■ Office ■ Lift ■ Core

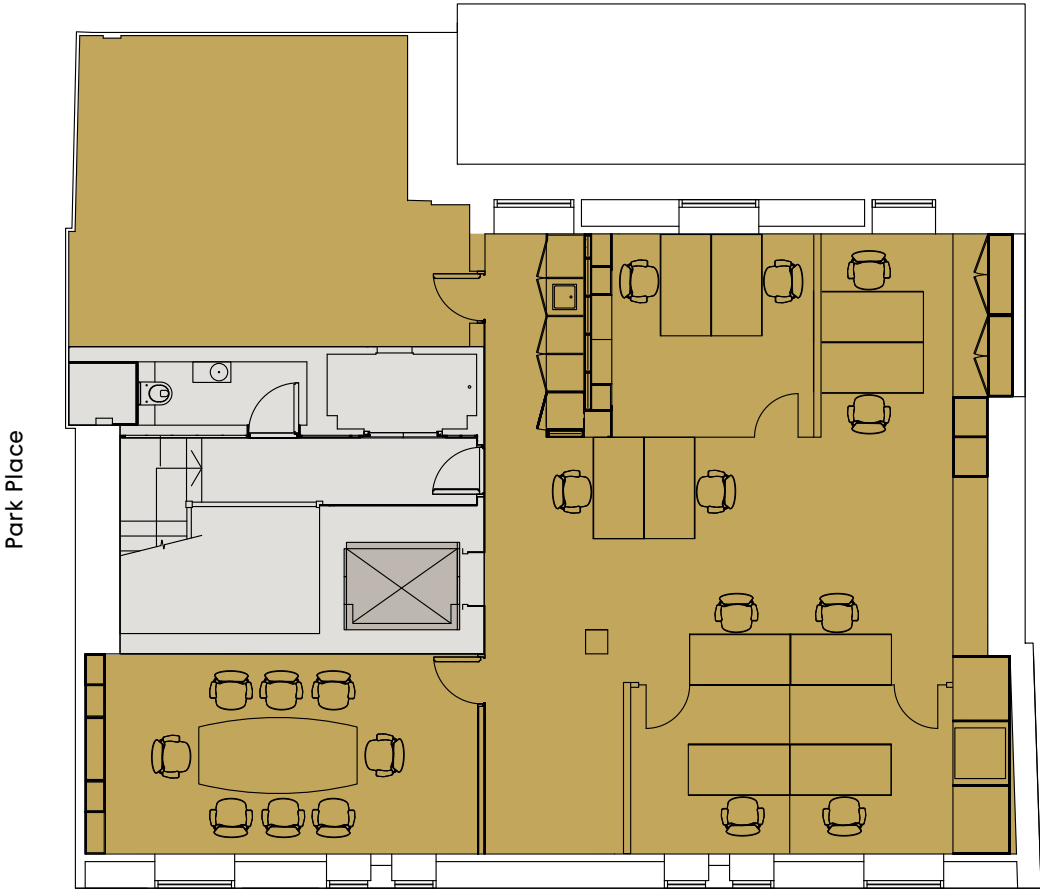
Plans are for indicative purposes only, not to scale.



10-11 PARK PLACE

St James's / SW1

Fourth Floor Plan - 1,037 Sq Ft (96.6 Sq M)



■ Office ■ Lift ■ Core

Plans are for indicative purposes only, not to scale.

