

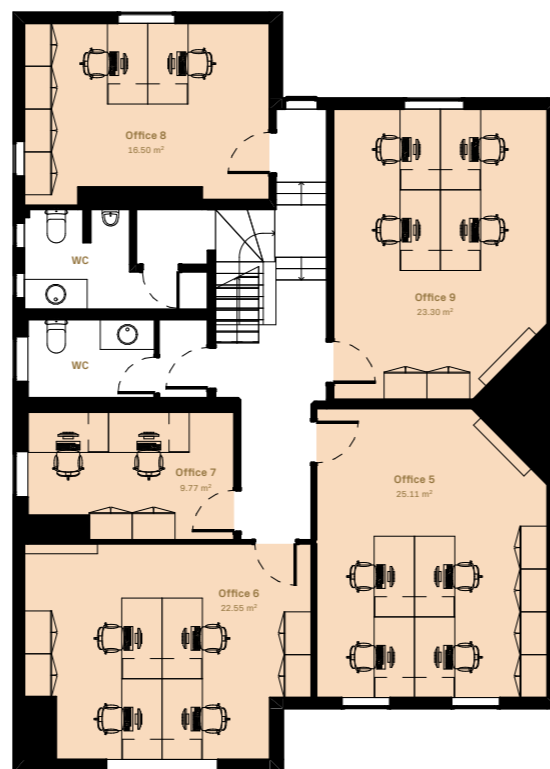
General Notes:

- All drawings are design intent only.
- It is the contractor's responsibility to confirm site dimensions and compatibility of specifications.
- Any issues or discrepancies are to be reported to Sculpt.
- This drawings remains the property and copyright of Sculpt Design Ltd, it must not be copied in part or in whole without prior consent.
- Do not scale from drawing, if in doubt ask.
- All OS maps and site plans © Crown Copyright and database rights 2025 OS 100047474.

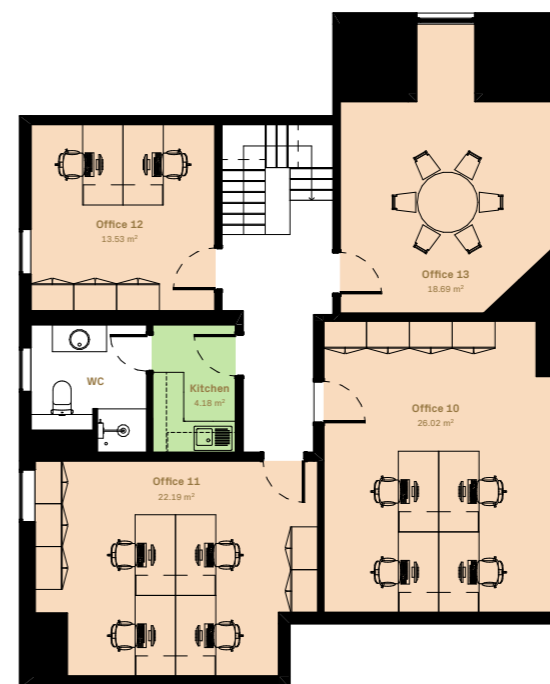
Floor	Room	m2	Sqft
Ground Floor			
	Kitchen	7.53	81.10
	Office 1	25.22	271.50
	Office 3	23.41	251.95
	Office 4	11.95	128.67
	Reception Lobby	21.94	236.13
		90.05 m²	969.35
First Floor			
	Office 5	25.11	270.30
	Office 6	22.55	242.70
	Office 7	9.77	105.13
	Office 8	16.50	177.59
	Office 9	23.30	250.83
		97.23 m²	1046.55
Second Floor			
	Kitchen	4.18	45.04
	Office 10	26.02	280.09
	Office 11	22.19	238.80
	Office 12	13.53	145.60
	Office 13	18.69	201.15
		84.61 m²	910.68
		271.89 m²	2926.58



Ground Floor
1:150



First Floor
1:150



Second Floor
1:150

Rev	Status	Date
01	For Information	08/09/2025

Client: Calthorpe Estates
 Project Title: 9 Greenfield Crescent
 Project Number: 25234
 Site Address: Birmingham, B15 3AU
 Issue Date: 08/09/2025
 Listed Building: None
 Conservation Area: Edgbaston Conservation Area

Proposed Plans

Status:
For Information
 Drawing Number: 201 Revision: 01 Drawing Size: A3

Sculpt

129 Zellig, Custard Factory, Birmingham B9 4AT
 hello@sculpt.design | sculpt.design | 0121 663 1313