



# Unit O, Griffin Industrial Park

Brunel Road, Totton, Hampshire SO40 3SH

**TO LET**

1,269.48 sq m (13,665 sq ft)



**HELLIER  
LANGSTON**

[www.hlp.co.uk](http://www.hlp.co.uk)

02382 022111 [southampton@hlp.co.uk](mailto:southampton@hlp.co.uk)

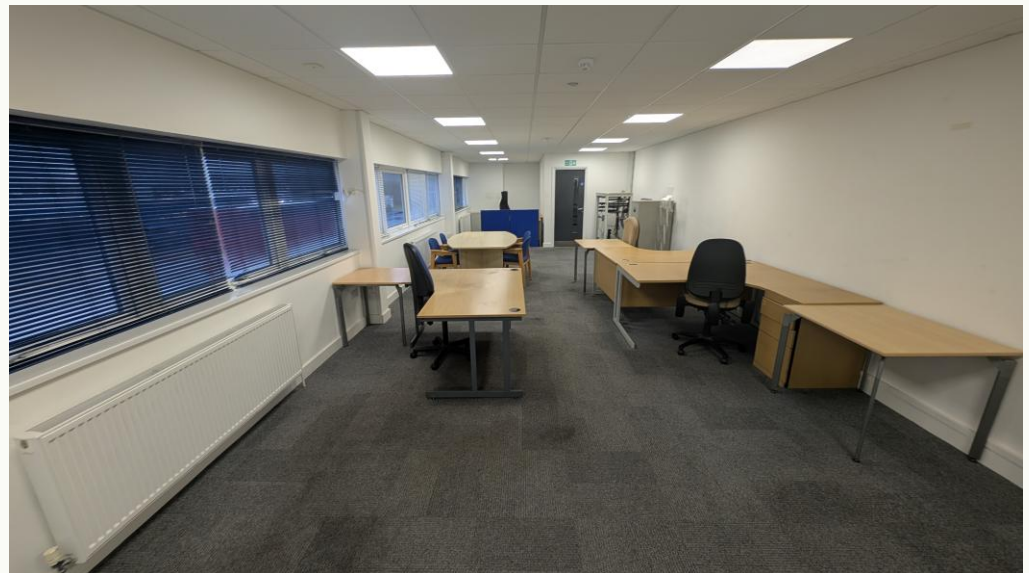
# Mid Terrace Industrial/ Warehouse Unit

## Description

Griffin Industrial Park is situated in a prominent position fronting onto Brunel Road on the established Calmore Industrial Estate. Brunel Road is the main route running through the estate. It is a modern estate comprising 16 industrial/warehouse units on a site of approximately 3.30 hectares (8.16 acres). The 16 units are in 3 terrace blocks with 2 communal estate roads running in between accessed from either Brunel Road or Stephenson Road.

Unit O comprises a mid terrace industrial / warehouse unit. The unit is constructed on a steel portal frame with part brick, part profile metal sheet elevations under an insulated profile metal sheet roof with intermittent roof lights.

Personnel access is from the front car park leading to ground floor reception with access to the 1st floor offices and ground floor amenities including toilets, a kitchen and separate office. The 1st floor offices are open plan. The warehouse area is clear span with a single electric up and over loading door on the front elevation.





# Mid Terrace Industrial/ Warehouse Unit

## Specification

### Warehouse

- 6.64m to eaves
- 5.62m to haunch
- 7.15m to ridge
- 7.78m to underside of roof
- Electric up and over doors (3.93m (w) by 4.88m (h))
- High bay warehouse lights
- Insulated profile metal sheet roof with daylight panels
- 3 phase 100 amp 69 KVA electrical supply
- Mains gas connection
- Mains water and drainage
- Ground floor Male, Female and disabled WC's

### Office

- Open plan 1st floor office
- Carpet
- Perimeter trunking
- Gas central heating
- Suspended ceilings with LED lighting
- Reception area
- Ground floor kitchen
- Ground floor office

### External

- Forecourt concrete loading and parking







# Mid Terrace Industrial/ Warehouse Unit

## Accommodation

The accommodation has been measured in accordance with the RICS Code of Measuring practice (6th Edition) to GIA as follows:

	Sq m	Sq ft
Warehouse area	1,200.27	12,920
1st floor office and ancillary areas	69.21	745
<b>Total</b>	<b>1,269.48</b>	<b>13,665</b>

## Business Rates

The premises are currently jointly assessed with Unit P.

Unit O & P – Rateable Value until 31st March 2023 £178,000 from 1st April 2026 £191,000.

## EPC

C-61

## Terms

The premises are available by way of a new Full Repairing and Insuring lease on terms to be agreed.

## Rent

On application

## VAT

Unless otherwise stated terms are strictly exclusive of Value Added Tax and interested parties must satisfy themselves.

## AML

In order to comply with Anti-Money Laundering Regulations 2017 (as amended) and the Proceeds of Crime Act 2002, Hellier Langston are required to identify all prospective purchasers and tenants.

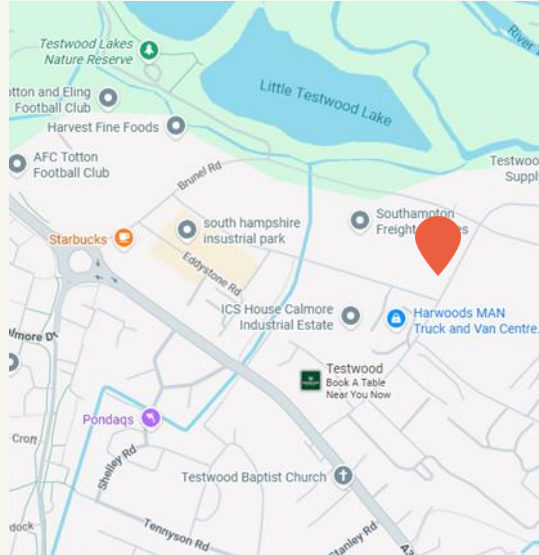
## Code for Leasing Business Premises

In England and Wales the Code for Leasing Business Premises, 1st edition, strongly recommends that any party entering into a business tenancy or lease agreement takes professional advice from a surveyor or solicitor. A copy of the Code (1st edition, February 2020) can be found on the RICS website.

## Location

Griffin Industrial Park is part of the larger Calmore Industrial Estate. The estate is situated at the corner of Stephenson Road and can also be accessed from Brunel Road, the main arterial route through the Estate.

Calmore Industrial Estate is accessed via the A36 Salisbury Road which links to junction 2 of the M27 to the North and Totton Town Centre and Redbridge Road to the South.



# HELLIER LANGSTON

[www.hlp.co.uk](http://www.hlp.co.uk)

02382 022111 [southampton@hlp.co.uk](mailto:southampton@hlp.co.uk)

Disclaimer: Hellier Langston Limited gives notice that these particulars are set out as a general outline only for the guidance of intending Purchasers or Lessees and do not constitute any part of an offer or contract. Details are given without any responsibility and any intending Purchasers, Lessees or Third Party should not rely on them as statements or representations of fact but must satisfy themselves by inspection or otherwise as to the correctness of each of them. No person employed or engaged by Hellier Langston Limited has any authority to make any representation or warranty whatsoever in relation to this property.



## Contact us

Direct your viewing requests and enquiries to:



**Matthew Poppett**

07971 824525  
[matt@hlp.co.uk](mailto:matt@hlp.co.uk)



**Jason Webb**

07989 959064  
[jason@hlp.co.uk](mailto:jason@hlp.co.uk)



Strictly by appointment with sole agents Hellier Langston