

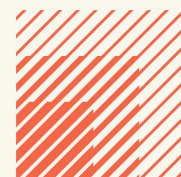


## Winchester Hill Business Park

Winchester Hill, Romsey, Hampshire  
SO51 7UT

**FOR SALE / TO LET**

1,528 sq.ft - 2,896 sq.ft



**HELLIER  
LANGSTON**

[www.hlp.co.uk](http://www.hlp.co.uk)

01329 220111 [fareham@hlp.co.uk](mailto:fareham@hlp.co.uk)

# Description

The 5 available new build units are located in a prime position just outside the centre of Romsey close to local amenities.

Accessed via the A3090, the units sit in close proximity to Romsey train station as well as providing excellent motorway access. Junction 3 of the M27 is just 7 minutes away and Junction 12 of the M3 is just a 12 minute drive.

Winchester Hill Business Park is a newly designed and built light industrial development offering various sized units with flexible use ground floor industrial space as well as first floor office accommodation to suit a wide variety of business uses.

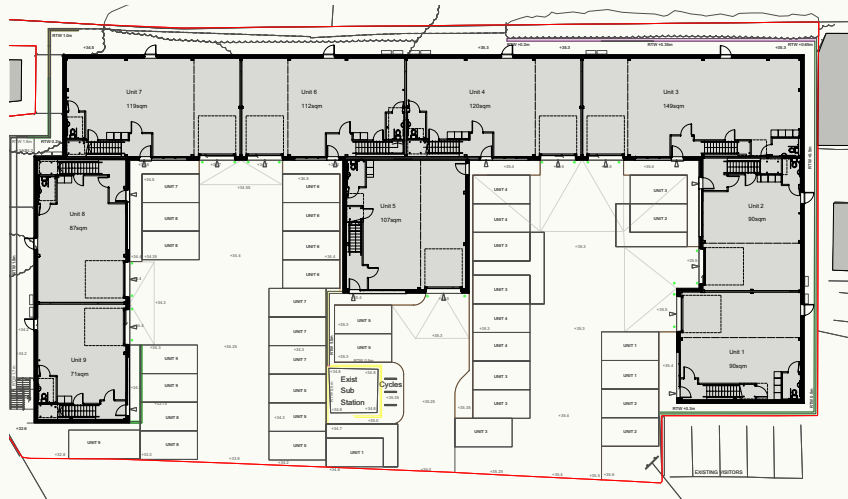
Each unit has been fitted with useful brew up areas and WC's over 2 floors, carpets and neutral décor throughout. There is gloss grey kitchen units, concrete effect worktop, stainless steel 1 bowl sink & tap in brew up areas, grey oak foil doors with dual finish ironmongery to first floor office, skirting trunking to first floor & white electric face plates and white sanitary wear with chrome brassware and splashbacks, air-conditioning with panel heaters to WCs, fire alarm, suspended ceilings to ground floor, exposed to first floor and carpet tiles to first floor office with vinyl to WCs.



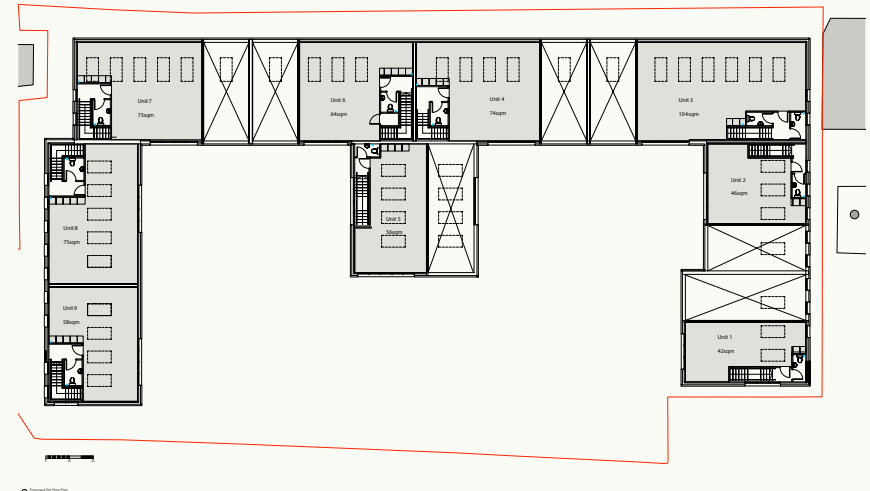
## Summary

- Allocated parking
- LED lighting throughout inc. High Bay
- EPC A ratings
- Power floated insulated concrete floor
- Solar PV panels
- Ground floor industrial
- First floor offices
- Powered roller door
- BT Openreach Fibre broadband line to each unit 3 phase power
- Air-conditioning to both floors

# Floor plans



Ground Floor



First Floor

## Parking Plan



“The development provides an excellent opportunity for prospective owner occupiers wishing to own their own asset, as well as those looking to lease with terms available which will help towards relocation or expansion costs.

The construction of the estate, which provides high grade industrial and office accommodation close to an affluent town centre and to major motorway junctions, has helped to fill the void created by a lack of development in the area for many years. Due to updated building regulations, this ensures excellent environmental credentials with A rated EPCs, in part due to the inclusion of roof mounted solar PV panels.”



### Patrick Mattison

Office, Industrial, Investment  
& Development Agency

07926 581 464

patrick@hlp.co.uk



# Financial Information

## Accommodation, Prices & Rents

The accommodation has been measured in accordance with the RICS Code of Measuring Practice (6th Edition) to GIA as follows (taken from Architects layout plans):

| Floor  | GF    | FF    | TOTAL GIA | Price    | Rent pax  | EPC |
|--------|-------|-------|-----------|----------|---|-----|
| Unit 1 | 969   | 560   | 1,528     | £382,250 | Year 1 - £15,290<br>Year 2 - £19,112.50<br>Year 3 - £22,935 | A   |
| Unit 3 | 1,604 | 1,292 | 2,896     | £725,000 | Year 1 - £29,000<br>Year 2 - £36,250<br>Year 3 - £43,500    | A   |
| Unit 5 | 1,152 | 721   | 1,873     | £468,300 | Year 1 - £18,733<br>Year 2 - £23,416<br>Year 3 - £28,100    | A   |
| Unit 6 | 1,206 | 872   | 2,077     | £520,000 | Year 1 - 21,000<br>Year 2 - £26,250<br>Year 3 - £31,500     | A   |
| Unit 7 | 1,281 | 958   | 2,239     | £560,000 | Year 1 - £22,400<br>Year 2 - £28,000<br>Year 3 - £33,600    | A   |

Prices & rents are exclusive of VAT at the prevailing rate. Rents are exclusive of rates & all other outgoings.

## Tenure

The premises are available freehold, or leasehold by way of new Full Repairing & Insuring lease for a term to be agreed.

## Planning

Detailed planning permission has been granted for the units based upon Class E(c) (i, ii, iii) (financial and professional services), Class E(e) (Provision of medical or health services), Class E(g) (i, ii or iii) (offices, research and development or light industrial) or Class B8 (storage and distribution) of the Schedule to the Town and Country Planning (Use Classes) Order 1987 (as amended).

## Rateable Value

The units are assessed individually by the VOA as Workshop & Premises with the following ratings:-

Unit 1 = £23,500                      Unit 3 = £45,250

Unit 5 = £29,000                      Unit 6 = £32,250

Unit 7 = £34,750

Source: [www.tax.service.gov.uk/business-rates-find/search](http://www.tax.service.gov.uk/business-rates-find/search)

## Estate Charge

An Estate Charge is levied with amount being payable £0.34 per sq.ft per annum subject to annual revision.

## VAT

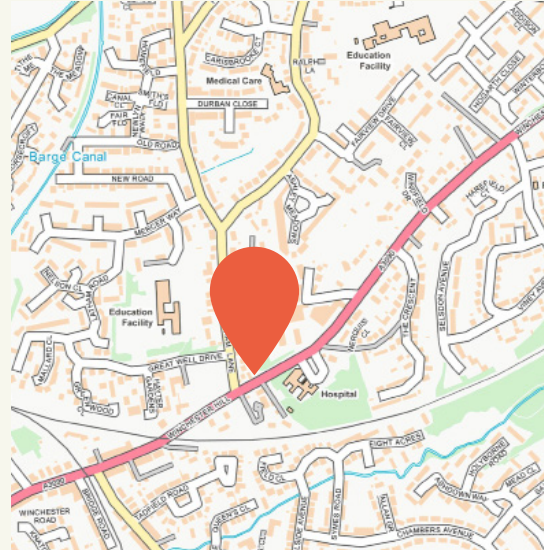
Unless otherwise stated terms are strictly exclusive of Value Added Tax and interested parties must satisfy themselves. The units are elected for VAT.

## Location

Located on the north side of Winchester Hill within the town of Romsey. The site is adjacent Snows Peugeot Garage, The Co-operative food store and Texaco filling station.

The site has excellent road communications with M27 Junction 3 within 5.9 miles and M3 Junction 10 & 12 within 8 miles.

Romsey town centre and train station are 0.9 miles to the west.



# HELLIER LANGSTON

[www.hlp.co.uk](http://www.hlp.co.uk)

01329 220 111    [fareham@hlp.co.uk](mailto:fareham@hlp.co.uk)

Disclaimer: Hellier Langston Limited gives notice that these particulars are set out as a general outline only for the guidance of intending Purchasers or Lessees and do not constitute any part of an offer or contract. Details are given without any responsibility and any intending Purchasers, Lessees or Third Party should not rely on them as statements or representations of fact but must satisfy themselves by inspection or otherwise as to the correctness of each of them. No person employed or engaged by Hellier Langston Limited has any authority to make any representation or warranty whatsoever in relation to this property.

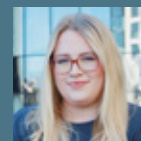


## Contact us

Direct your viewing request and enquiries to:-



**Patrick Mattison**  
07926 581464  
[patrick@hlp.co.uk](mailto:patrick@hlp.co.uk)



**Tierney Brain**  
07562 980266  
[tierney@hlp.co.uk](mailto:tierney@hlp.co.uk)



Strictly by appointment with sole agents Hellier Langston.