

**INDUSTRIAL UNIT IN PRIME LOCATION**



**UNIT 2, HALES INDUSTRIAL PARK, ROWLEY'S GREEN LN, COVENTRY, CV6 6AT**

To Rent: £9,750 per annum

975 sq ft (90.58 sq m)

## Description

---

Hales Industrial Park is a well-established industrial estate. Unit 2 is 975 sqft with partitions; these partitions have created an office, toilet and kitchen area totaling 349 sqft. The unit benefits from a floor to ceiling shutter door which opens onto a yard. Gates and bars on the window and door give Unit 2 added security.

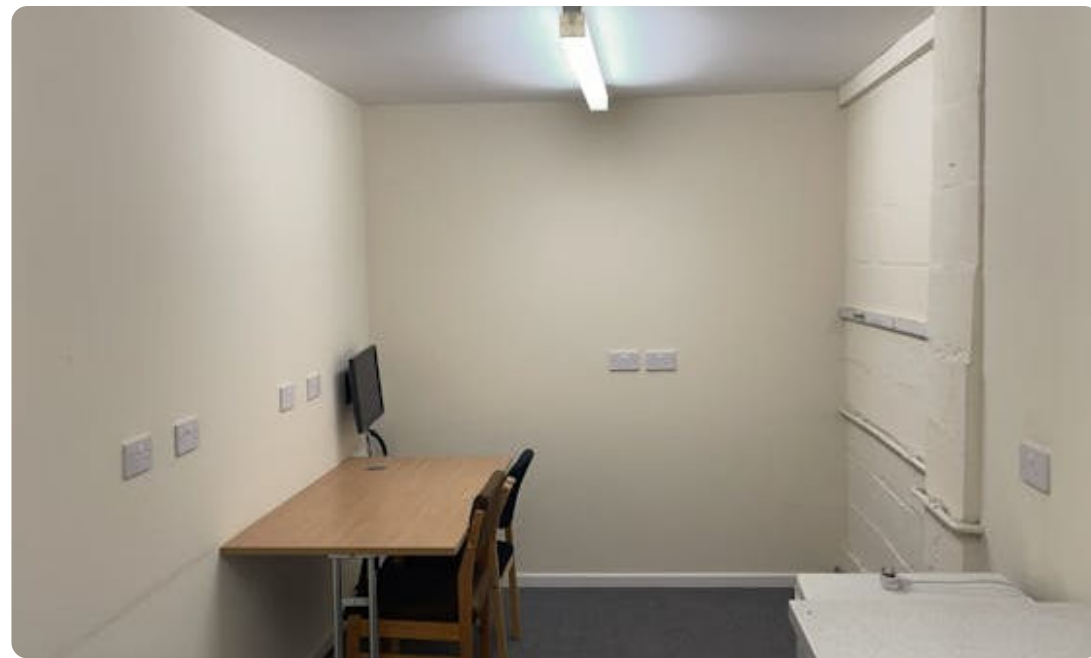
There is a cafe on the estate.

Parking is available outside the unit.

## Summary

---

- 5 minute's away from the M6
- Kitchenette
- Toilet facilities
- Office space
- Parking available
- Secure unit



**UNIT 2, HALES INDUSTRIAL PARK, ROWLEY'S GREEN LN, COVENTRY, CV6 6AT**

To Rent: £9,750 per annum

975 sq ft (90.58 sq m)

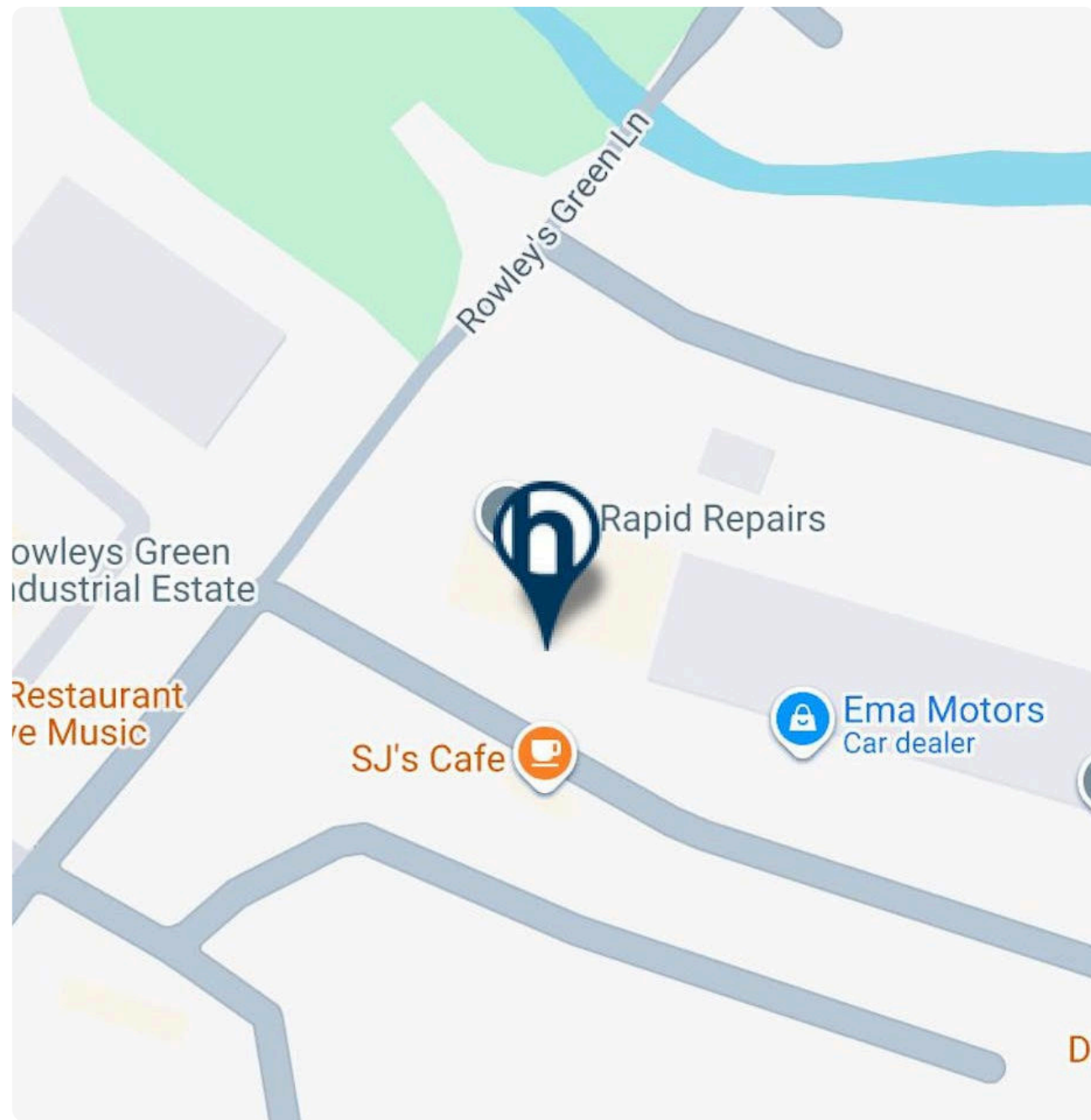
## Location

---

Hales Industrial Park is situated near to Coventry Arena, just off of the A444. With only a 5-minute drive to the M6 it has great access to main roads.

Unit 2 is only a 15 minute drive from Coventry City centre.

The closest train station is Coventry Arena and is only a 10 minute walk from the unit.



**UNIT 2, HALES INDUSTRIAL PARK, ROWLEY'S GREEN LN, COVENTRY, CV6 6AT**

To Rent: £9,750 per annum

975 sq ft (90.58 sq m)

## Coventry

Coventry is a city in central England. It's known for the medieval Coventry Cathedral, which was left in ruins after a WWII bombing. A 20th-century replacement, with abstract stained glass, stands beside it. The collection at the Herbert Art Gallery & Museum includes paintings of local heroine Lady Godiva. A statue of her, naked on horseback, is nearby. The 14th-century St. Mary's Guildhall has a vaulted crypt.

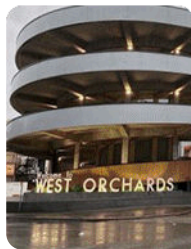
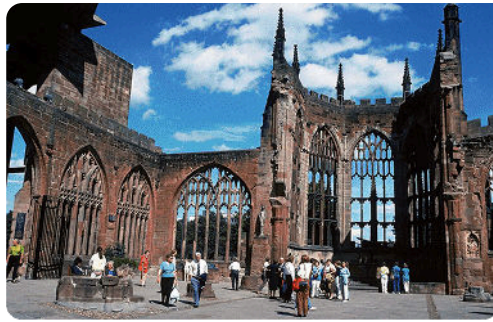
Population: 345,324 (2021)

Metro population: 651,600

Area: 98.54 km<sup>2</sup>

Coventry is the ninth largest city in England and the twelfth largest in the United Kingdom, with a population of 360,700 as of the mid-year population estimates, making it the second largest Local Authority in the West Midlands.

Coventry is a lively, multicultural city with a rich history embracing the old and new. Nowhere is this more evident than in the Cathedral Quarter where the modern architecture and ancient ruins of the two cathedrals dominate cobbled streets with bustling cafes, pubs and restaurants.



**GALLERY**



**UNIT 2, HALES INDUSTRIAL PARK, ROWLEY'S GREEN LN, COVENTRY, CV6 6AT**

To Rent: £9,750 per annum      975 sq ft (90.58 sq m)

## ACCOMMODATION

---

NAME	SQ FT	SQ M	RENT	AVAILABILITY
Unit	975	90.58	£10 /sq ft	Available
<b>Total</b>	<b>975</b>	<b>90.58</b>		

## TERMS

---

New lease - Leasehold

## RENT

---

£9,750 per annum

## ANTI MONEY LAUNDERING

---

To comply with our legal responsibilities for AntiMoney Laundering, it is necessary to check all parties involved in this transaction. It is the responsibility for parties on both sides to provide information necessary to complete these checks before the deal is completed.

## VIEWINGS

Strictly by appointment with the agent  
Bromwich Hardy.

## CONTACT



**Rob Lord**  
07385 663 147  
rob.lord@bromwichhardy.com

## Award winning commercial property advice from the team you can trust

- Commercial Agency Advice
- Sales
- Lettings
- Development Advisory
- Complete Property Management Services
- Professional Services
- Lease Renewals
- Rent Reviews
- Valuation Advice

Read our latest Barometer

