



 ChinehamPark

Rosewood

Newly refurbished ground floor offices

6,474 sq ft To Let

Your new office

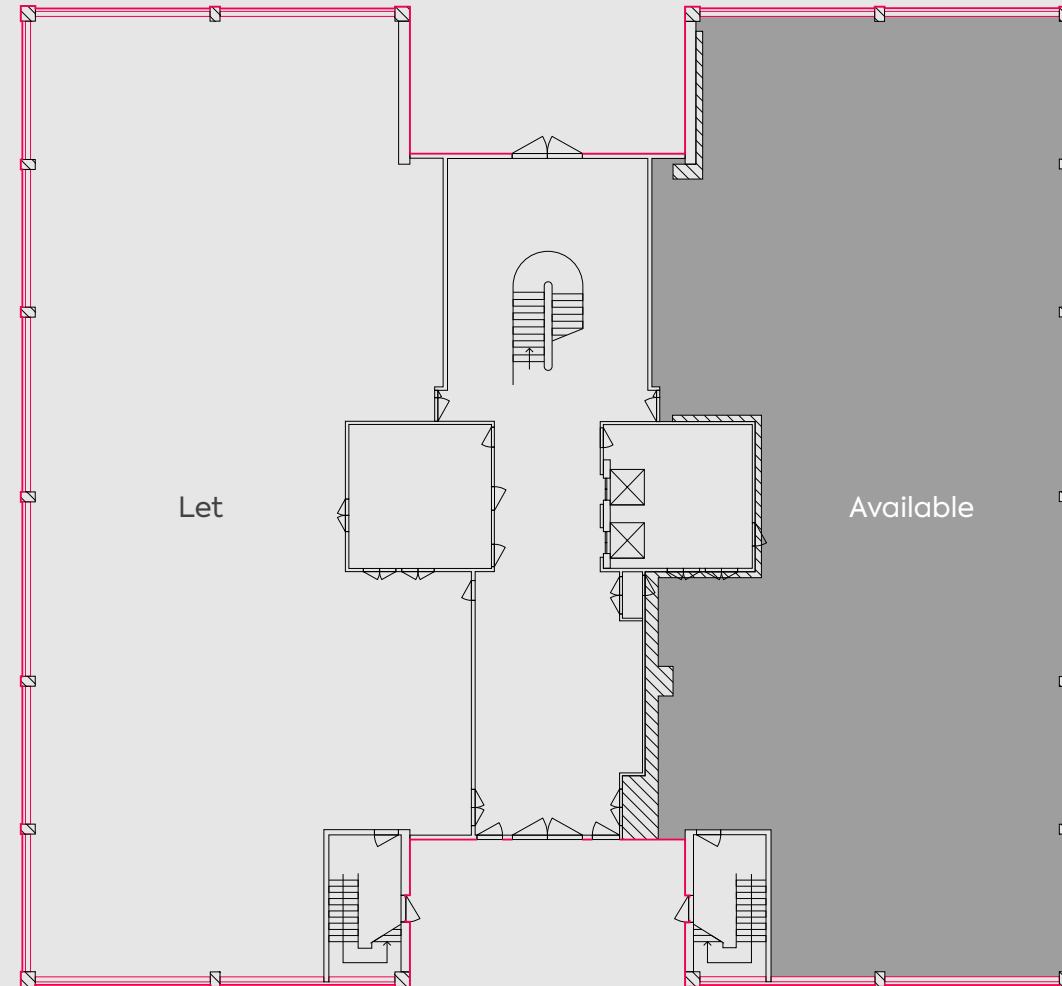
Newly refurbished accommodation at Rosewood is located at the heart of Chineham Park. It is a two minute walk from The Exchange, co-working space and cafe.

Net Internal Area	SQ FT	SQ M	Car parking
Ground floor	6,474	601	35 spaces

*Net internal area / *Plans not to scale. Indicative Only



Indicative floorplan



It's time for a better working environment



New air conditioning system



Occupancy design 1:10 sqm NIA



New metal tile suspended ceiling



New LED lighting



Roof top solar PV



2 passenger lifts



Excellent parking ratio of 1:185 sq ft (35 spaces)



Comfortable breakout & informal meeting space



Fitwel accredited park



Concierge reception



EV charging points



Target EPC: C



Your Community

Features on the park include:

- ⚡ EV charging points at Spindlewood
- 🏠 Bio-diversity areas
- 📶 Wifi across The Green and in The Exchange

Other amenities nearby include:



Trainline connecting Basingstoke to London Waterloo in 1hr

Easy road connections to A339, A33, M3 & M4

Amenity field with outdoor seating

Regular street food, social and fitness events

Gather & Gather cafe with The Exchange co-working space

Jogging/walking route start point



Amenity field

Bright Horizon nursery

Future Gather & Gather restaurant

Chineham hair & beauty salon

Fitness First gym

Free shuttle bus into Basingstoke town centre and train station every 15 minutes

Parklands: walking routes and bio-diversity areas

Enhanced wellbeing for your people

Chineham Park is part of the largest area certified for health and wellbeing excellence globally, through the Fitwel rating scheme. Fitwel is the most widely used people-focused certification for health and wellbeing excellence in the built environment, and is recognised worldwide for its assessment of holistic health measures.

Chineham Park offers an attractive environment thanks to its diverse mix of on-site amenities and facilities, coupled with open, green spaces, excellent pedestrian connectivity, fitness areas and healthy food options, to help your employees achieve a better work/life balance.



Onsite fitness classes



Community events



Chineham Park
running club



Fitness First



Bright Horizons
nursery



Beautician and
hairdressers



24hr on-site
security



Courtesy buses
and taxis



Excellent landscaping
across 95 acres, including
900 mature trees



The Exchange &
co-working space



Gather & Gather
café



Street food
events

The Exchange

The Exchange is a concept from Frasers Property that provides an agile and welcoming workspace for dynamic companies and their people who want to connect in an inspiring, technology rich environment.

The Exchange is operated by Gather + Gather, offering breakfast, lunch and all day food and drink options including hot paninis, soups, sandwiches, breakfast baps, sweet and savoury snacks and great coffee.



Agile working
space



Meeting
rooms



Flexible
working



Artisan
coffee



Sustainability at Chineham Park

Chineham Park is proud to be targeting net zero carbon by 2030 for managed areas, aligned with certification scheme Science Based Targets, to limit warming to 1.5°C. The park will achieve this through energy efficiency measures, procurement of 100% renewable electricity, and rooftop solar PV installations. Enhancing biodiversity across the park, minimising waste to landfill, and promoting cycling and active travel are more ways Chineham Park is helping our occupiers be more sustainable.

Chineham Park aims to generate social value in the local community. The park fundraises for local charity, Sebastian's Action Trust, and supports an apprenticeship employment programme.



100%
renewable
energy in
common areas



Sustainability
improvement
plans in place



Rooftop solar
PV roll out



EV charging
points



Bird boxes &
insect hotels



Bicycle lanes



Air quality
monitoring



ISO 14001
Environmental
Management
system



Green flag
award



90% of
waste
recycled



On track to
achieve net
zero carbon
by 2030



2* Fitwel
accreditation
for Health &
Wellbeing



Your Community

Chineham Park is one of the region's most desirable business addresses. A delightful 90 acre parkland setting that's a breath of fresh air for the people who work there. Customer convenience and wellbeing is at the heart of the comprehensive amenity offer and events schedule. The park is equally accessible by car or bike, with superb public transport links too, including an exclusive free bus service connecting people directly to the nearby Basingstoke train station.



Get in touch

If you're interested in joining a business community in high quality office space, amongst an abundance of amenities and events, please contact one of the team today:

CBRE

Matt Willcock
+44 (0)7920 117 257
matt.willcock@cbre.com

Dom Clarke
+44 (0)7766 721 036
dom.clarke@cbre.com

James Brounger
+44 (0)7860 618 231
james.brounger@cbre.com

HOLLIS HOCKLEY

Rhodri Shaw
+44 (0)7768 448 211
rhodri.shaw@hollishockley.co.uk

Jeremy Metcalfe
+44 (0)7587 039 562
jeremy.metcalfe@hollishockley.co.uk

Alice Hilliard
+44 (0)7557 280 885
alice.hilliard@hollishockley.co.uk

Elizabeth Gray
+44 (0)7712 815 268
elizabeth.gray@hollishockley.co.uk



Frasers Property's commitment is to deliver enriching and memorable experiences for our customers and stakeholders across the integrated portfolio and services we provide. We have businesses in Singapore, Australia, Europe, China and Southeast Asia, and a hospitality footprint spanning over 80 cities.

Contact:

Chris Stevens
chris.stevens@frasersproperty.com

Kipp Harden
kipp.harden@frasersproperty.com

[chinehampark.co.uk](https://www.chinehampark.co.uk)

Misrepresentation Act 1967: At the time of printing the contents of this brochure were believed to be correct but cannot be guaranteed and are expressly excluded from any contract. February 2023.

