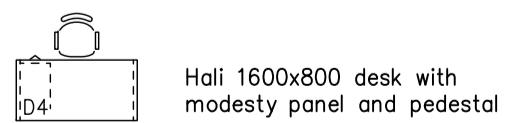
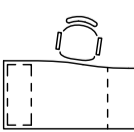




**FURNITURE KEY**



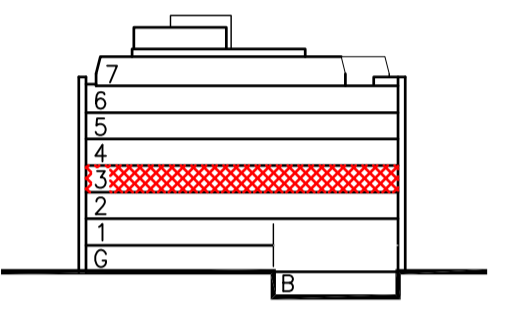
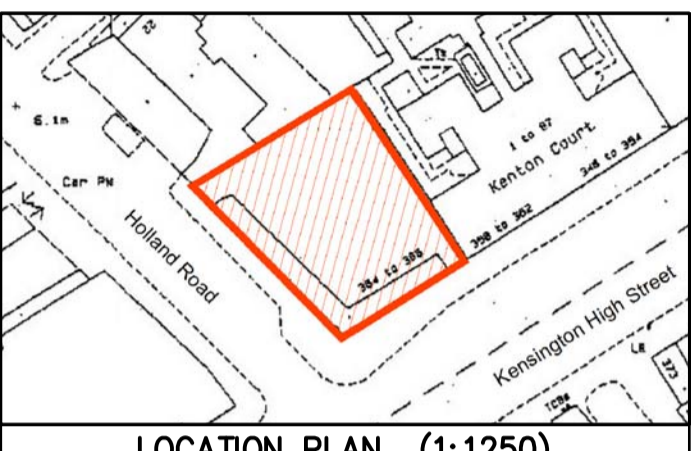
Hall 1600x800 desk with modesty panel and pedestal




Ahrend 1800x900/800 desk with grey top, fence panel and pedestal

**Copyright**  
 This drawing is the copyright of McFarlane Latter Limited, Chartered Architects and reproduction by any means is not permitted without our prior written consent.  
 © McFarlane Latter Limited  
 3 Clifford Street, London W1S 2LF, UK

- Notes**
1. No responsibility will be accepted for the presentation or accuracy of information reproduced from electronic data exchange.
  2. The electrical installation is to comply with the latest edition of the IEE regulations and current amendments.
  3. The drainage installation is to be completed to the satisfaction of the Local Authority.
  4. Do not scale this drawing. Figured dimensions to be checked on site.



 Red cloud indicates latest revisions

Revisions

No.	Description	Date

CURRENT PLAN: 24/07/14

UNIVERSAL MUSIC GROUP  
 364 KENSINGTON HIGH STREET  
 LONDON W14 8NS

3rd FLOOR PLAN  
 FURNITURE & PERSONNEL

File Name	\\UNIVERSAL MUSIC\KHS 2014\KH14-31.DWG		
Drawn	DT	Scale	⊙ A1 1:100
Date	24/07/14	Dwg No.	KH14.36

**McFARLANE LATTER**  
 ARCHITECTS  
 3 Clifford Street, London W1S 2LF  
 Tel: 020 7287 5565 Fax: 020 7287 5257  
 www.mcfarlanelatter.co.uk