

# ONE BABMAES

ST JAMES'S, LONDON SW1



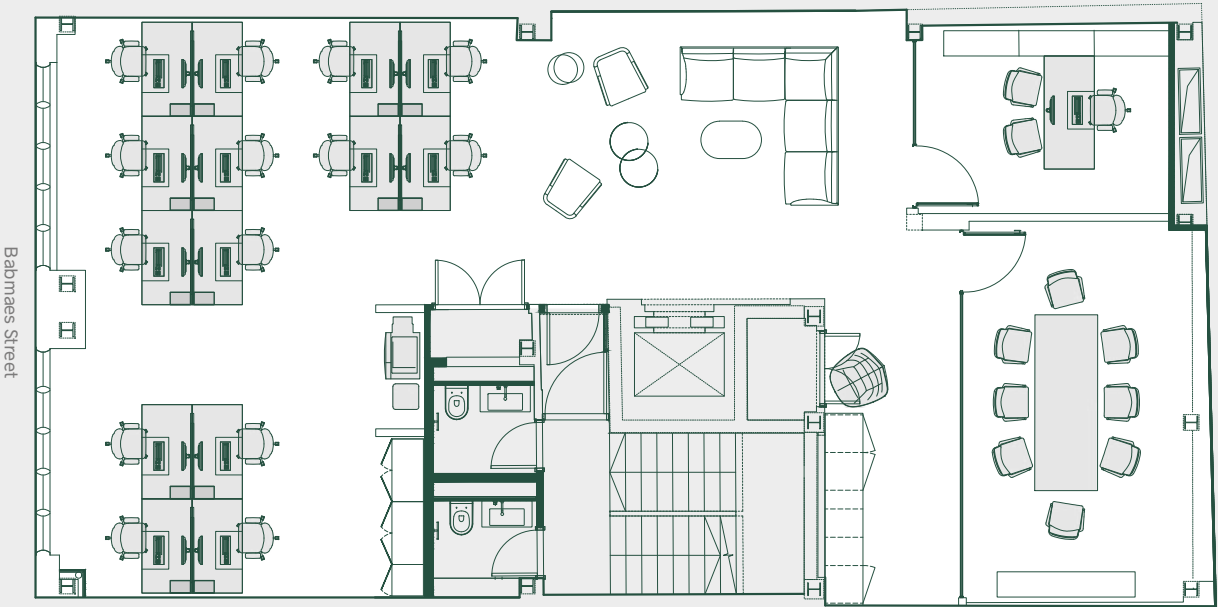
# In the heart of historic St James's, One Babmaes has been comprehensively redeveloped to deliver a best-in-class workspace.

Occupiers of One Babmaes can look forward to modern, spacious floorplates, thoughtfully composed with all the exceptional features and finishes you would expect from a boutique St James's office building. The upper floors have an abundance of natural light, excellent floor-to-ceiling heights and access to a stunning communal roof terrace.





# Floor plan



Typical Floor Space Plan - not to scale

# Availability

AREA	SQ FT	SQ M
Fourth	-	LET
Third	-	LET
Second	1,447	134
First	-	LET
Ground	1,121	104
Lower Ground	-	LET
<b>TOTAL</b>	<b>2,568</b>	<b>238</b>
Roof Terrace	397	37

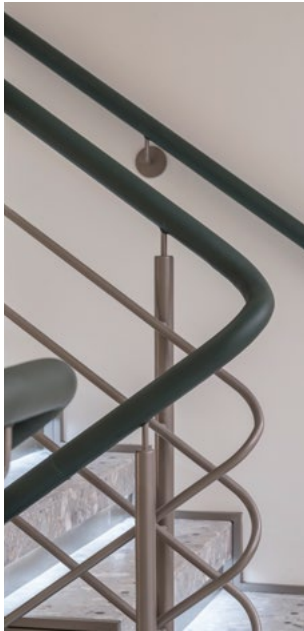
Total floor areas based on single occupancy.  
Approximate NIA's taken from the Plowman Craven Survey.



- Comprehensively redeveloped boutique office building
- Building host
- Automatic passenger lift
- VRF cooling system
- LED lighting throughout
- Full fibre connectivity
- Fully fitted and furnished first floor
- South west facing roof terrace
- Cycle parking and EV charging facility
- Shower facilities with lockers
- EPC - B



**Top Left:**  
Building Exterior  
**Bottom Left:**  
Fitted First Floor Office



**Top Left:**  
Staircase Detail

**Top Right:**  
First Floor Office

**Centre Left:**  
Fourth Floor Office

**Centre Right:**  
Leather Handle Detail

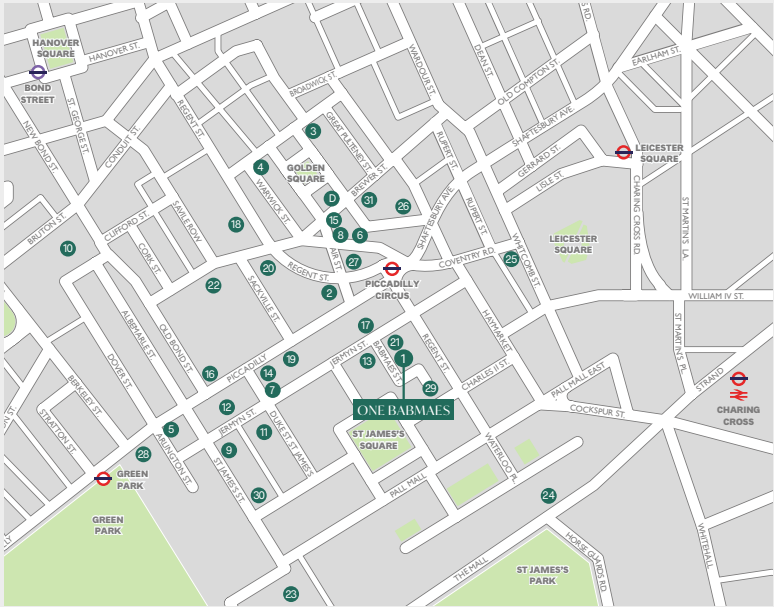
**Bottom Left:**  
Passenger Lift

**Bottom Right:**  
Shower Facilities



# St James's on your doorstep

Babmaes Street has a quiet neighbourhood vibe, yet enjoys a wealth of high-end amenities right on the doorstep. Renowned Jermyn Street is a few steps away, while lively Soho is just a few minutes' walk. Excellent connections include Piccadilly Circus underground (a three-minute walk), and nearby Green Park and Charing Cross.



## LOCATION

### Office

- 1 One Babmaes

### Food & Drink

- 2 Hawksmoor
- 3 Bob Bob Ricard
- 4 Nopi
- 5 The Wolseley
- 6 Brasserie Zédel
- 7 45 Jermyn St
- 8 Whole Foods
- 9 Café Murano
- 10 Hakkasan
- 11 Maison François
- 12 Franco's

### Retail & Leisure

- 13 Church's Shoes
- 14 Fortnum & Mason
- 15 Rapha Cycle Club
- 16 Burlington Arcade
- 17 Sunspel
- 18 Penhaligon's
- 19 Hatchards
- 20 Jo Malone
- 21 Emmett London

### Places of Interest

- 22 Royal Academy of Arts
- 23 St James's Palace
- 24 The ICA
- 25 Prince of Wales Theatre

### Hotels

- 26 Ham Yard Hotel
- 27 Café Royal
- 28 The Ritz

### Fitness Clubs

- 29 CrossFit SW1
- 30 Equinox
- 31 Third Space

## TRANSPORT

### Piccadilly Circus

3 min walk

- Bakerloo
- Piccadilly

### Green Park

5 min walk

- Jubilee
- Piccadilly
- Victoria

### Charing Cross

8 min walk

- Bakerloo
- Northern
- National Rail

### Bond Street

13 min walk

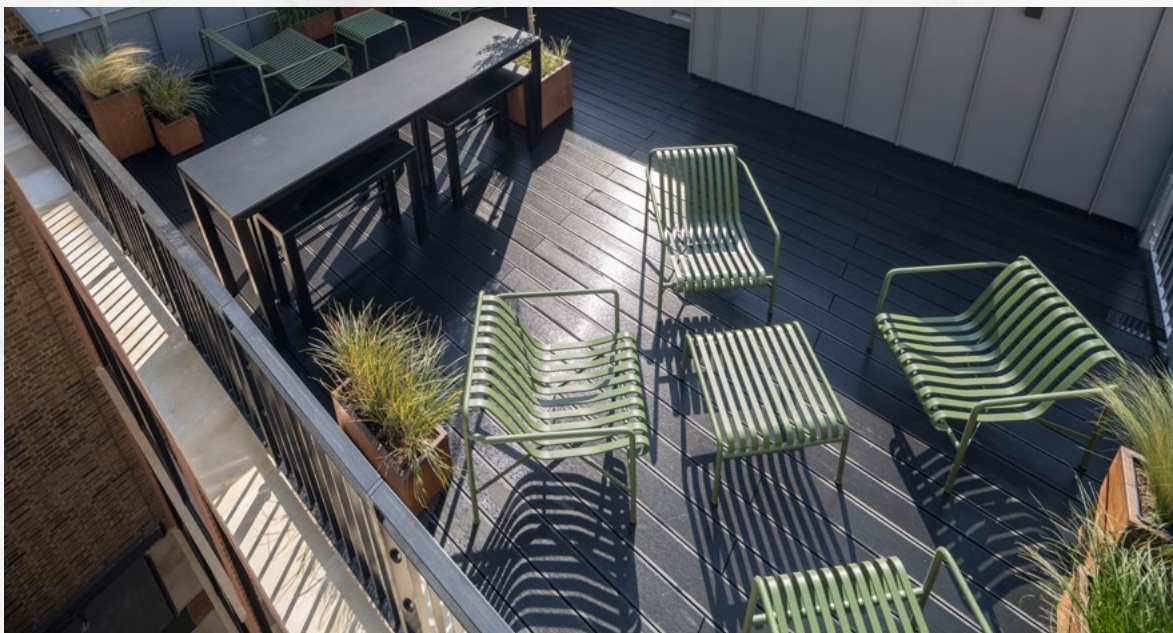
- Central
- Jubilee
- Elizabeth

### Waterloo

18 min walk

- Bakerloo
- Jubilee
- Northern
- Waterloo & City
- National Rail





# ONE BABMAES

## **CUSHMAN & WAKEFIELD**

Hector Macneal  
hector.macneal@cushwake.com  
07885 201 163

Joel Randall  
joel.randall@cushwake.com  
07525 897 012

## **HEDGE**

Ben Orchard-Smith  
ben.orchard-smith@hedge-re.co  
07557 988 115

Paul Gold  
paul.gold@hedge-re.co  
07779 100 875

## **ONEBABMAES.COM**

Hedge RE and Cushman & Wakefield, on behalf and for the lessors of this property whose agents they are, give notice that: The particulars are set out as a general outline only for guidance of intending lessees and do not constitute, nor constitute part of, an offer or contract. April 2022.  
Designed by cormackadvertising.com