

AREA PLAN

MEADWAY COURT

Clovelly Way, STEVENAGE, SG1

First Floor

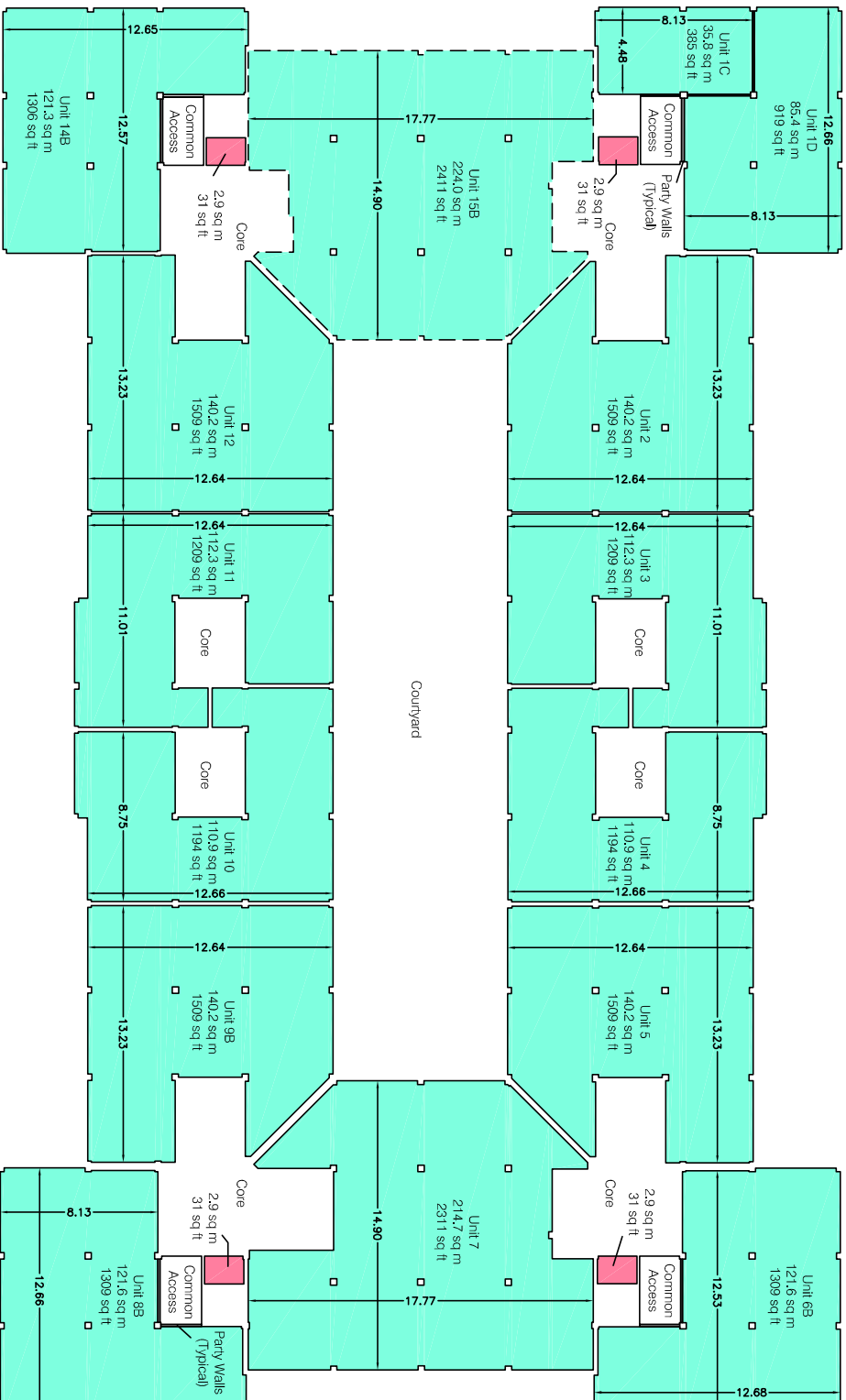
Net Internal Area

OFFICE	1931.6 sq m	20792 sq ft
ANCILLARY	11.6 sq m	124 sq ft

TOTAL NIA: 1943.2 sq m 20916 sq ft

The following has been EXCLUDED from the TOTAL NIA:

Common Access	29.9 sq m	322 sq ft
Party Walls	3.0 sq m	32 sq ft



Condition of Site:
Occupied
 Vacant
 Heavy Fit-Out
 Shell & Core
 Under Construction
 Cat A Fit-Out

Notes:
 This drawing complies with the 6th edition of the RICS code and indicates the extent of the areas quoted, produced to an accuracy commensurate with standard presentation scales. It is held in a scaled original CAD format.
 Dashed line denotes assumed wall line. Wall line inaccessible at the time of survey.

Revisions:
 A - Original Issue (April 2015)

Dwg No. 33118-58-A1

Issue A

April 2015

Scaled for presentation purposes

Plowman Craven

Regulated by RICS



+44(0)1582 765566



www.plowmancraven.co.uk