

Park Court

Park Cross Street,
Leeds, LS1 2QH

ONE
PARK COURT

Sleek, stylish and effortlessly smart, Park Court's boutique vibes make it the perfect choice for businesses of all sizes.

Tucked away in Leeds' business district – just a short stroll from the station and right next to leafy Park Square. Its thoughtful touches and stylish design details make a great first impression on you and your guests.

Early bird or night owl? With a private office, you can head on over to Park Court any time, 24 hours a day,

seven days a week. Work your way in climate-controlled comfort, with super-speedy Wi-Fi and all the essentials taken care of. When you're off the clock, step out to Park Square or nip to one of the local lunch spots, cafés or city-centre shops.



Included in your building



24/7 access,
all year round



I.T
infrastructure



Climate
control



Low-flow
fixtures



Recycling
zones



Hot
showers



Kitchen
facilities



Energy-efficient
LED lighting



Regular
maintenance



Bike storage
for cyclists



Natural
light



Electronic
door entry



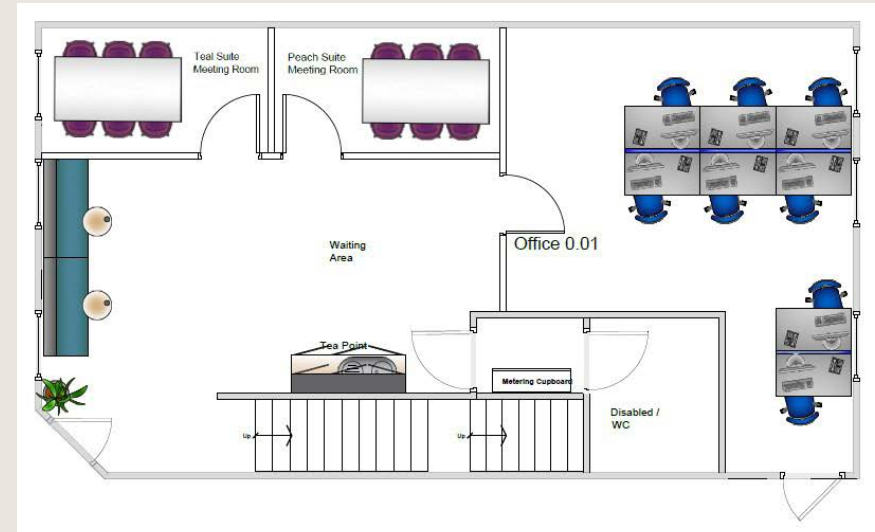
Building highlights

- + Eco building materials
- + Two dedicated meeting rooms
- + Motion sensors
- + Super-central location
- + Close to Park Square
- + Right by local bus links
- + 4 minutes from Leeds station
- + On-road parking
- + Step-free access
- + Accessible facilities*

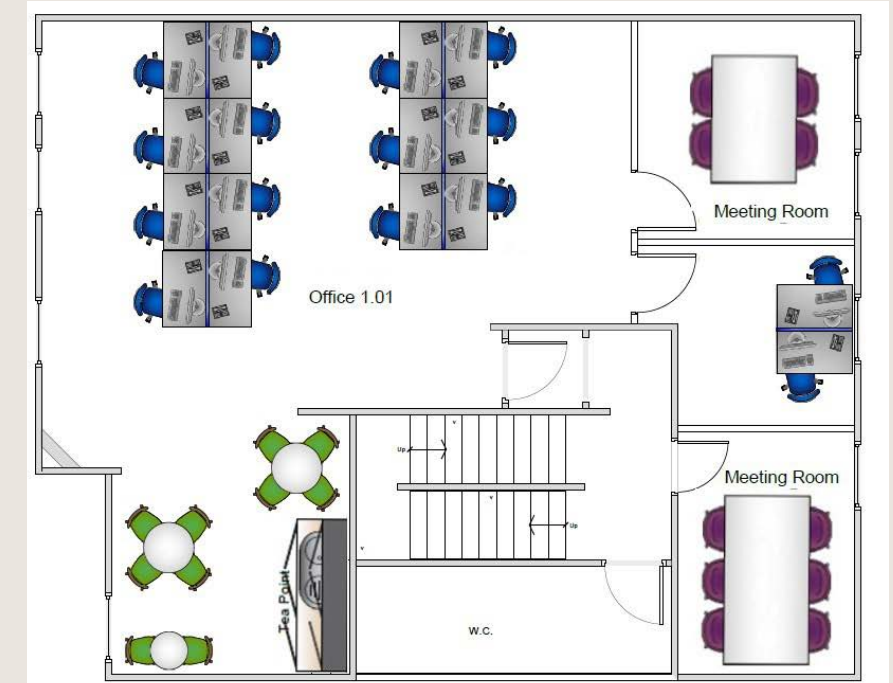
Single occupier

As your long-term property partner, we'll adapt to your changing needs and work with you to find the best solution for your business.

Park Court spans across 3,900sqft (including GF meeting rooms) and can be let floor by floor, or to one standalone occupier.



Ground Floor

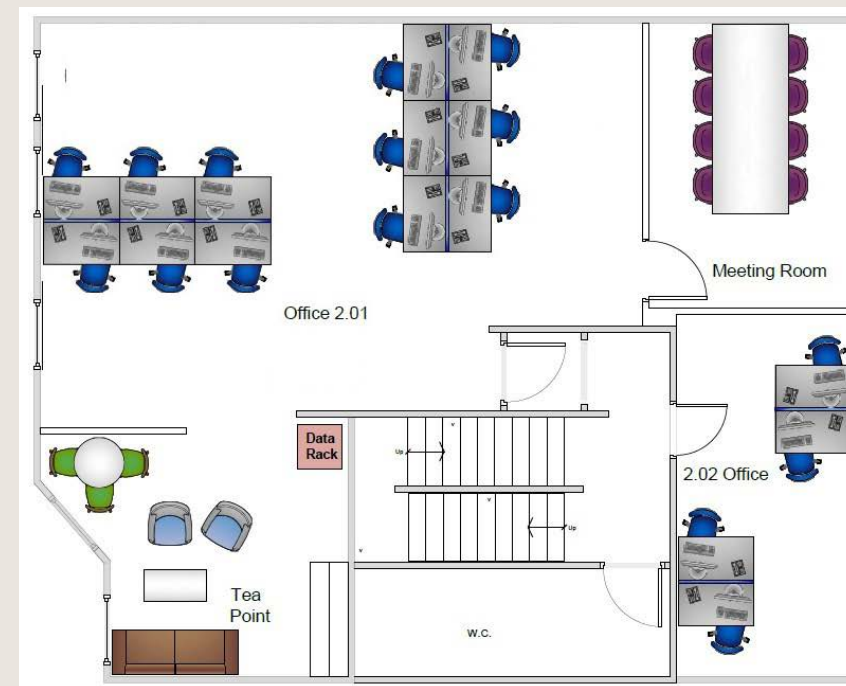


First Floor

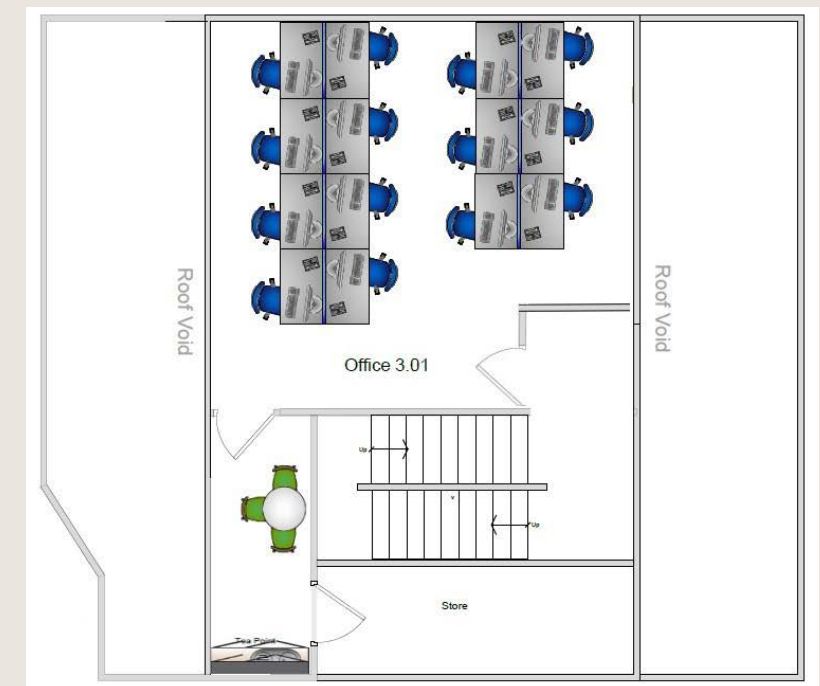
To let

Presitigious self-contained office building from £26.50 per sq ft

- + Circa 3,900sqft
- + 4 Storey
- + On-site Parking
- + Cycle Storage
- + Comfort Cooling
- + Flexible Layouts
- + Quiet Central Location



Second Floor



Third Floor

Meeting rooms



Teal Suite
Up to 4 people

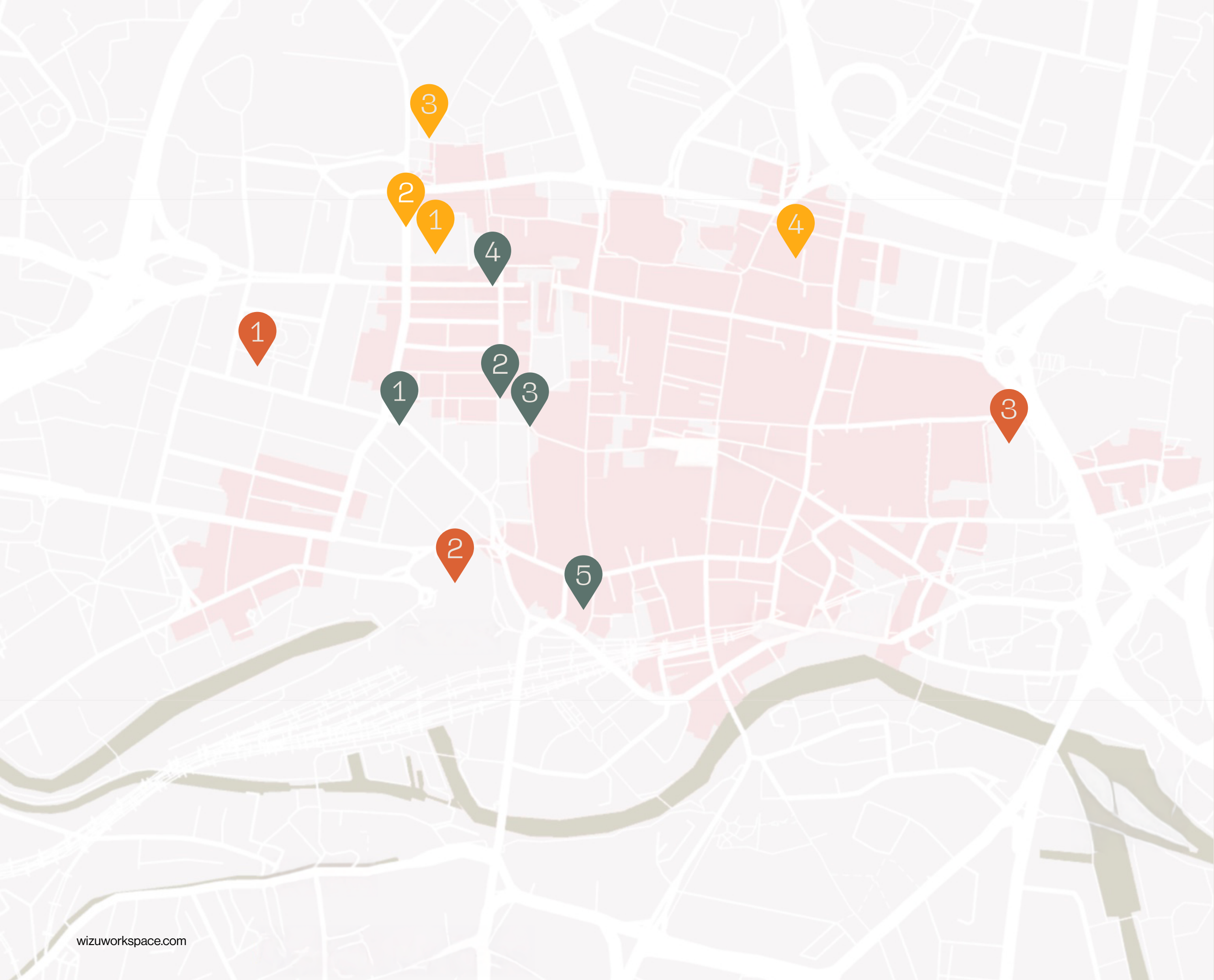
- + Casual, comfy seating
- + Big plasma screen TV
- + HDMI cable
- + Fully accessible



Peach Suite
Up to 6 people

- + Sleek design
- + Big plasma screen TV
- + Video conferencing
- + Fully accessible





Local gems

Food and drink

- | | |
|-----------------------|------------|
| 1 BOX Leeds | 2 minutes |
| 2 La Bottega Milanese | 4 minutes |
| 3 Moose Coffee | 5 minutes |
| 4 Electric Shuffle | 5 minutes |
| 5 Laynes | 10 minutes |

Hotspots

- | | |
|-------------------------|------------|
| 1 Leeds Art Gallery | 4 minutes |
| 2 Leeds Central Library | 4 minutes |
| 3 Millennium Square | 6 minutes |
| 4 Opera North | 10 minutes |

Transport links

- | | |
|-----------------------|------------|
| 1 Local parking | 2 minutes |
| 2 Leeds train station | 4 minutes |
| 3 Leeds bus station | 14 minutes |

Ready to get started?

Get in touch today



07565 622133



harry.finney@fljltd.co.uk



Harry Finney



07701 276767



bethan.linehan@fljltd.co.uk



Bethan Linehan

