



**A place to work smart
and be more productive.**

REGUS – LEAMINGTON SPA

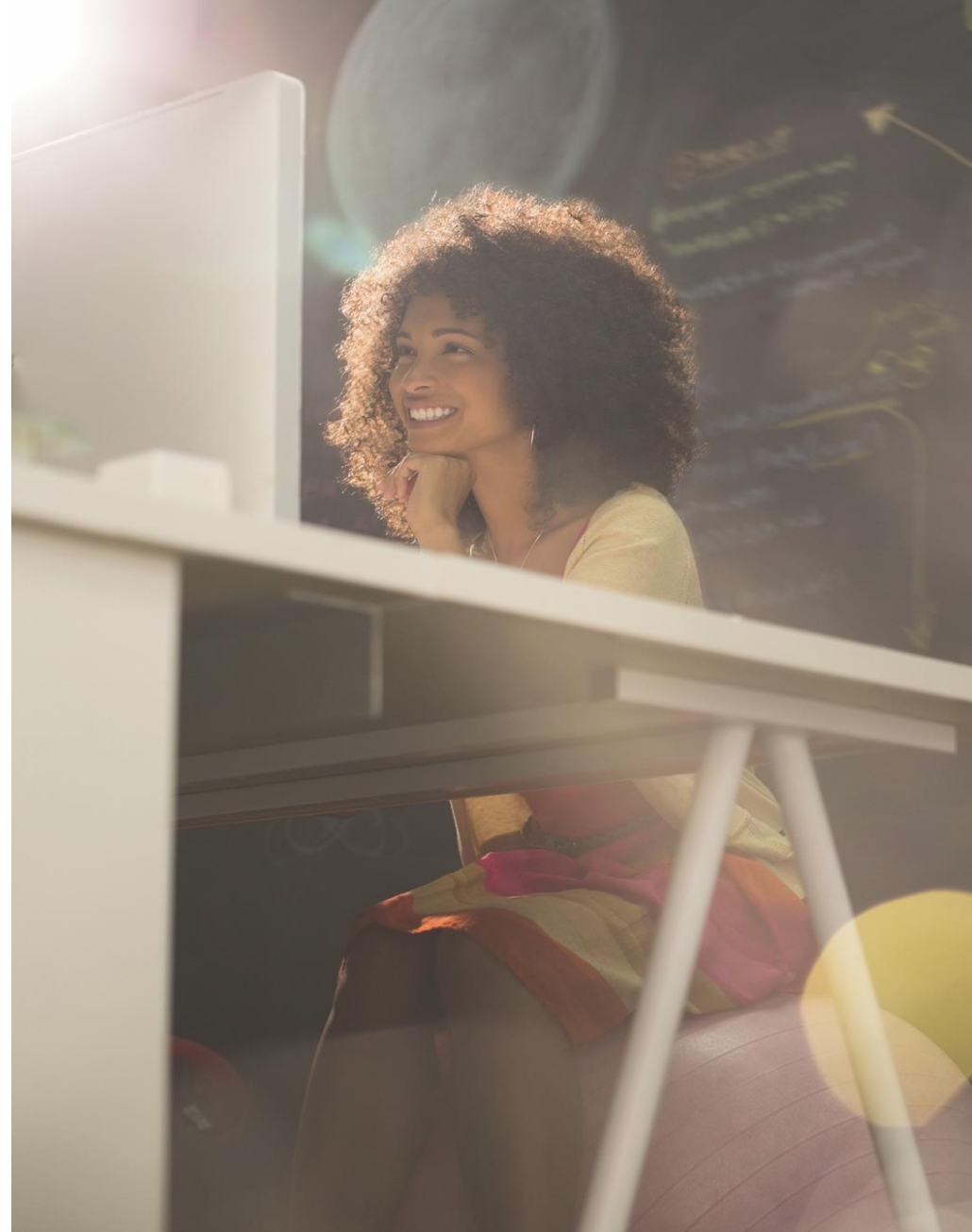
Regus[™] Work
your way

Places to work for everyone worldwide.

As the leading global workspace provider, Regus provides an infrastructure of workspace in every city in the world.

With offices, co-working and meeting spaces, you can operate anywhere without set-up costs or capital investment. A way to stay productive while reducing your costs.

With Regus, join a global community of 2.5 million like-minded professionals and work wherever you need to.



Workspace that makes sense.

Operate anywhere

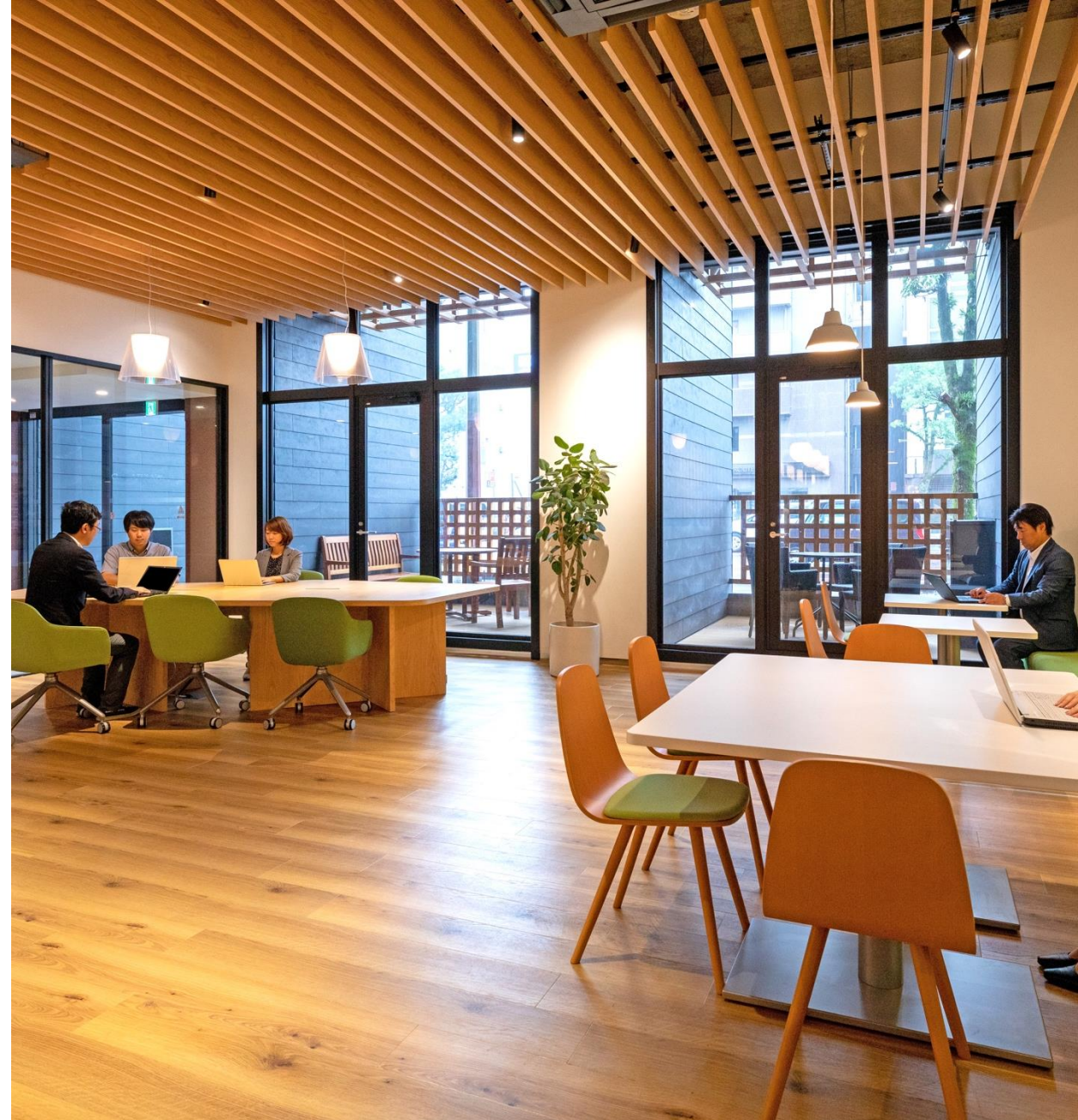
- Create a business presence in practically every city in the world
- An expanding network of workspaces
- Locations in cities, airports, service stations, public buildings and railways

Immediate cost benefits

- Only pay for the space you need
- Flexible terms, from an hour to many years
- No set-up costs or capital investment

Fully outsourced

- Ready-to-use workspace worldwide
- One contract, simple reporting, and global customer service
- Amenities including business-grade internet and telephony, receptionist, kitchen and more



Workspace that makes sense.

Enhance productivity

- Find and book space with the Regus app
- Professional and inspiring work environments
- Access to 60 million Wi-Fi hotspots and thousands of business lounges

Instant global community

- A global community of 2.5 million like-minded professionals
- Promote your business via our community marketplace
- Monthly networking and knowledge-sharing events



Productive workspace wherever you need it.

With Regus, get consistent workspace and customer service throughout the network.

In more than 3,400 locations, you will find everything you need to enhance productivity – not just offices, co-working, meeting rooms and virtual offices, but also essential amenities and useful support services.

It is the widest choice of locations, enabling you to go wherever business takes you quickly and easily.



Regus – Leamington Spa Nicholls House

This brand new refurbished office space over three floors, based on the popular Tachbrook Park. Whether you need a private desk, a larger space for your team, or you're looking for a meeting room, Regus Leamington caters for all your needs.

- Prime office location
- Brand new offices
- Flexible lease terms
- Various office size available
- 24/7 access
- Onsite car parking
- Strong transport links
- Energy efficient building with Solar panels and bicycle parking



Photos



Floor Plan

Ground Floor

- Reception
- Lounge area
- Private booth
- Island kitchenette with seating
- Quiet-Coworking area
- Meeting rooms
- Various office sizes and layouts, flexible contracts



Floor Plan

First Floor Plan

- Kitchenette
- Various office sizes and layouts
- Open plan office space
- Event space



Floor Plan

Second Floor Plan

- Kitchenette
- Various office sizes and layouts
- Open plan office space
- Event space



For more information please contact:

Regus Leamington Spa
Nicholls House
Homer Cl
Royal Leamington Spa
Warwick, CV34 6TT

Aman
Community Sales Manager
07852588795
Amandeep.mattu@regus.com