



# *1 Great Titchfield Street*

Self-contained  
building to let

The  
Langham  
Estate



# Discover a hidden gem tucked away in *the heart of* *Fitzrovia*

The building is located on the west side of Great Titchfield Street, close to its junction with Market Place, in the heart of vibrant Fitzrovia.

The property is moments away from the international retail thoroughfare of Oxford Street & Regent Street and a short walk away from Regent's Park. The area has excellent transport links including 8 underground tube lines spread across 8 stations, as well as the Elizabeth Line.



1,425 sq ft  
Self-Contained Building  
at the very centre of  
Fitzrovia





# *The Building*



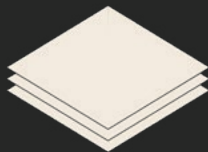
Specification



Self-contained building



Retail Unit on Ground Floor and Basement



Open Plan Offices on 1<sup>st</sup> to 3<sup>rd</sup> Floors



Prime location



Full window frontage



Excellent transport links



Excellent natural light



The Building

1 Great Titchfield Street









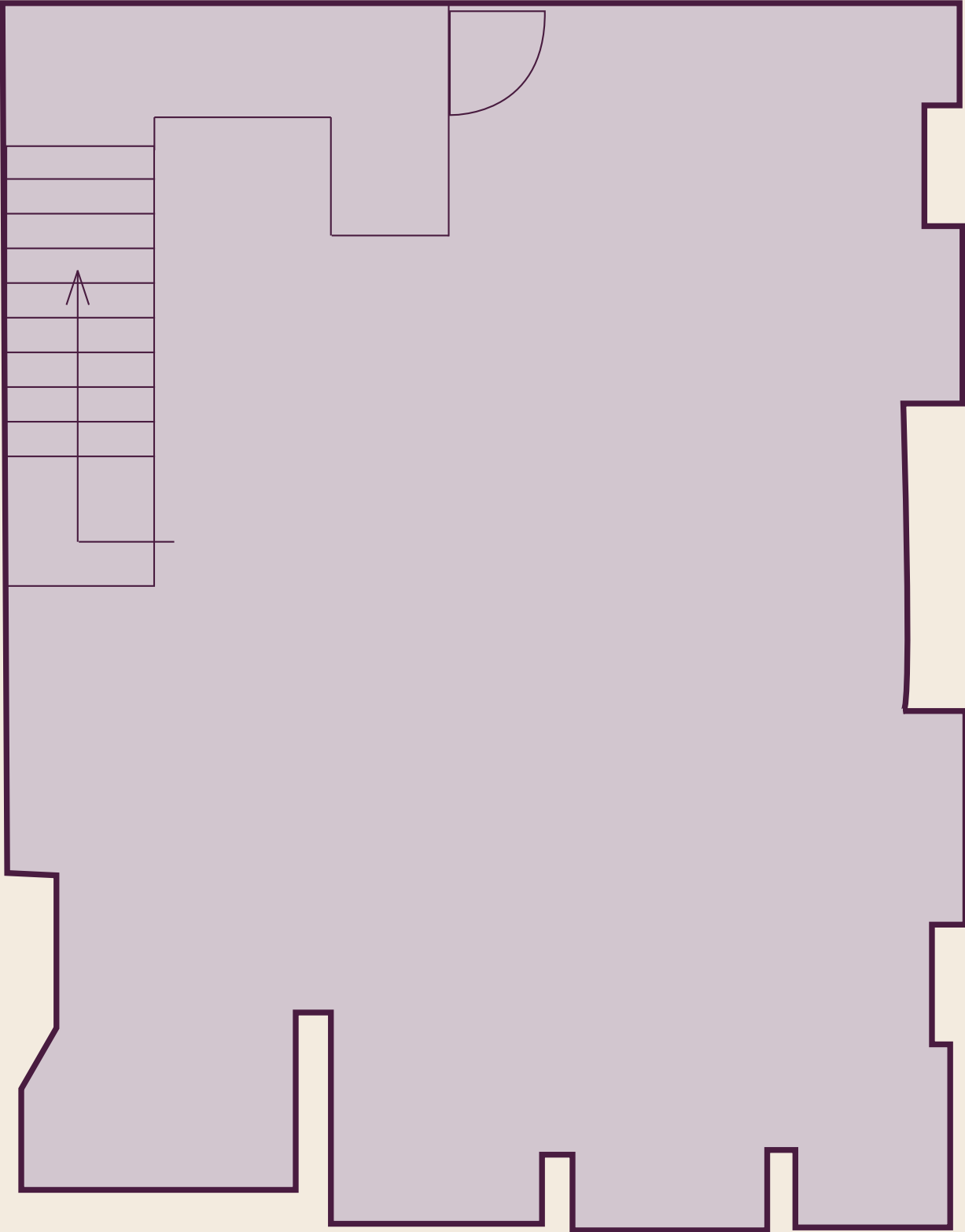
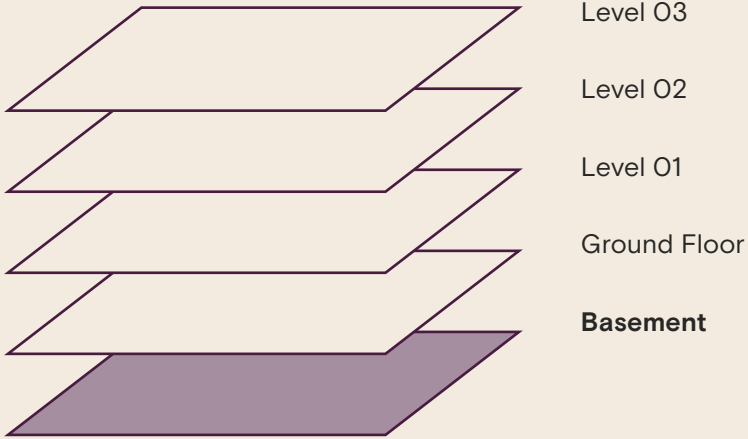






Basement

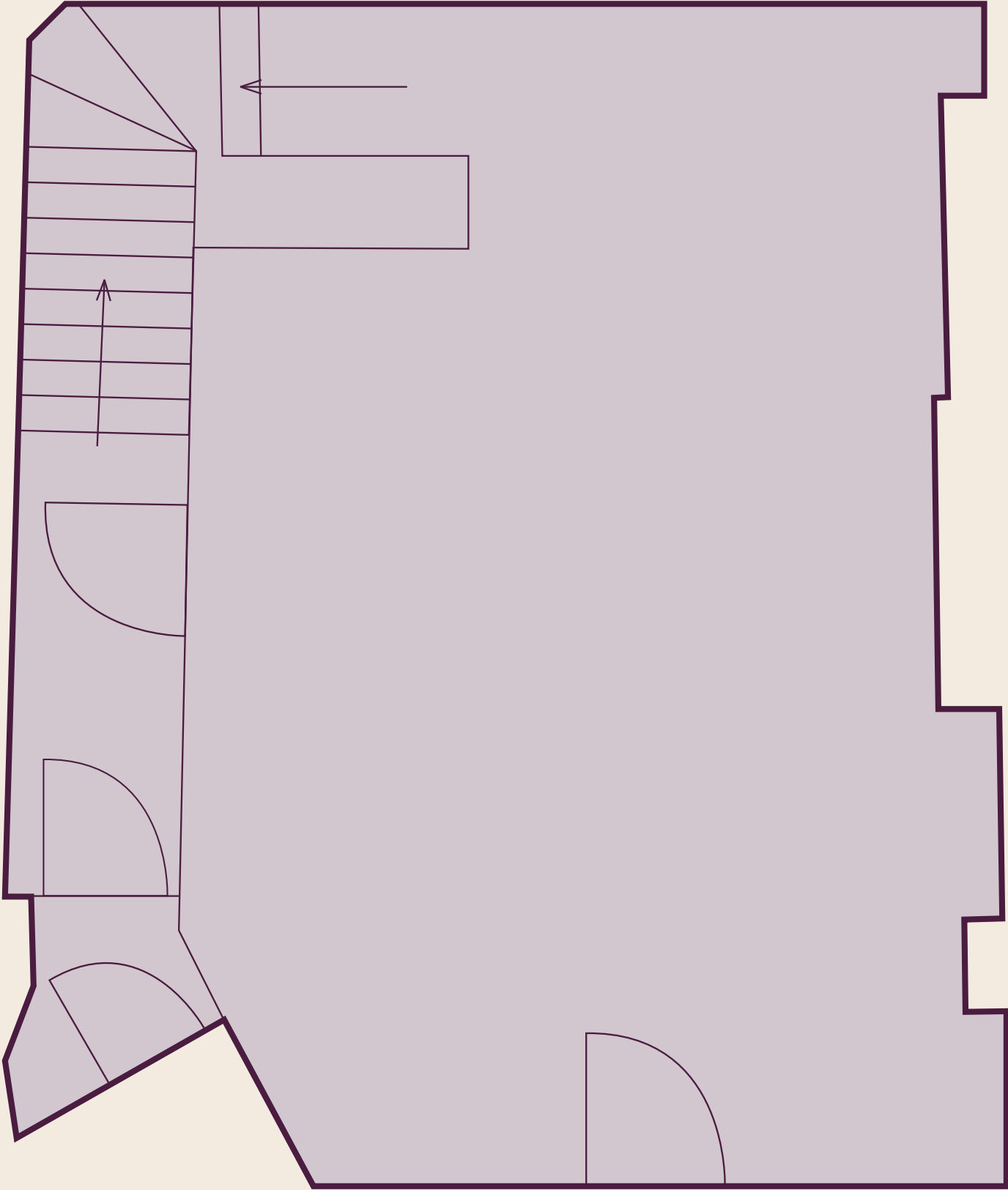
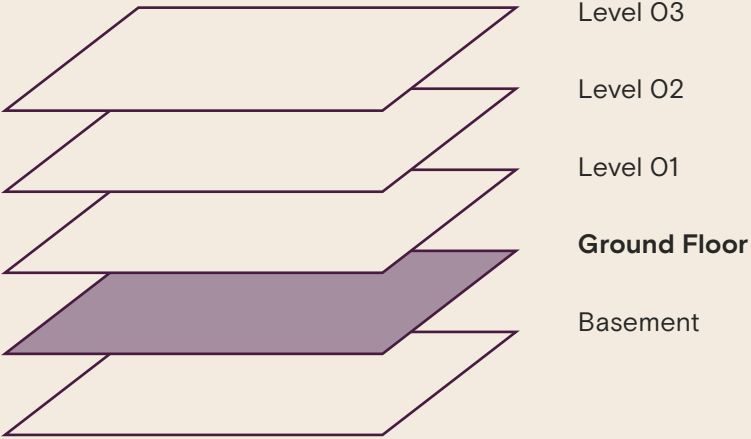
Shop / Snack Bar      380 sq.ft.      35.30 sq.m.





Ground Floor

Shop / Snack Bar      325 sq.ft.      30.19 sq.m.



1 Great Titchfield Street

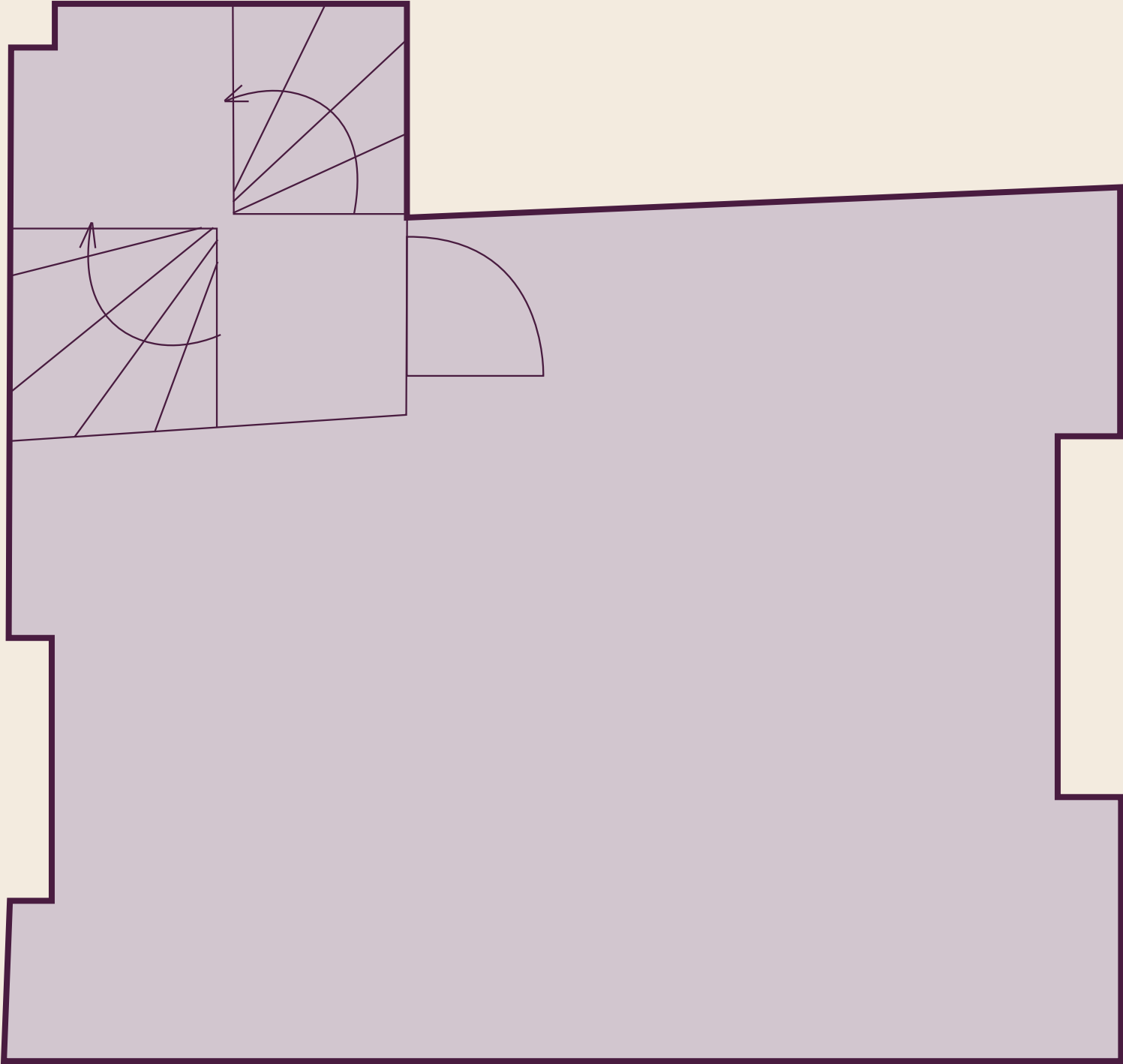
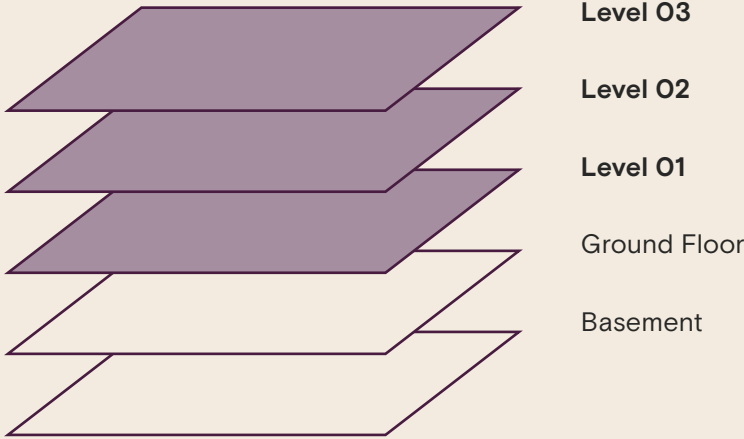
*The Building*



First, Second & Third Floor

Office 240 sq.ft. 22.96 sq.m.

- Open Plan Offices Arranged over Three Floors



1 Great Titchfield Street

The Building



# *The Location*

1 Great Titfield Street





Covent Garden

15 Mins



Tottenham  
Court Rd

7 Mins

Charing Cross

15 Mins

1 Great  
Titchfield  
Street

Soho

7 Mins

Oxford St

3 Mins



Oxford Circus

4 Mins

Cavendish Sq

8 Mins



Bond St

11 Mins

Goodge St

10 Mins

1 Great Titchfield Street



Discover your perfect location

Food & Drinks

- The Oxford Market
- Rhum Tavern
- The Social
- Chinawhite
- The Cocktail Club
- The Great Thai
- 28-50 Wine Workshop
- Chishuru
- Honest Burgers
- Yalla Yalla
- Wahaca
- Vapiano
- Burger & Lobster
- The Salad Project
- Pahli Hill
- K-POP
- Tenmaru
- Kiss The Hippo
- Carmel
- Ole & Steen
- GT Corner
- Kaffeine

Beauty & Wellbeing

- FS8
- F45
- Rowbots
- Shadi Salon

- Piedi-de-Poule
- Reviv
- Beauty Club London
- CliniCity
- the a.b.c. smile
- Cavendish Clinic
- Yuki Clinic
- Wumman
- Beautify LDN

Culture & Lifestyle

- Ab-Anbar Gallery
- Gillian Jason Gallery
- Des Bains
- Pi Artworks
- Apollo Galleries
- Arlettie
- Minotti London
- Dune London
- Margaret Howell
- Timberland
- Dr. Martens
- Reiss
- Sports Direct
- Hawes & Curtis
- KEF



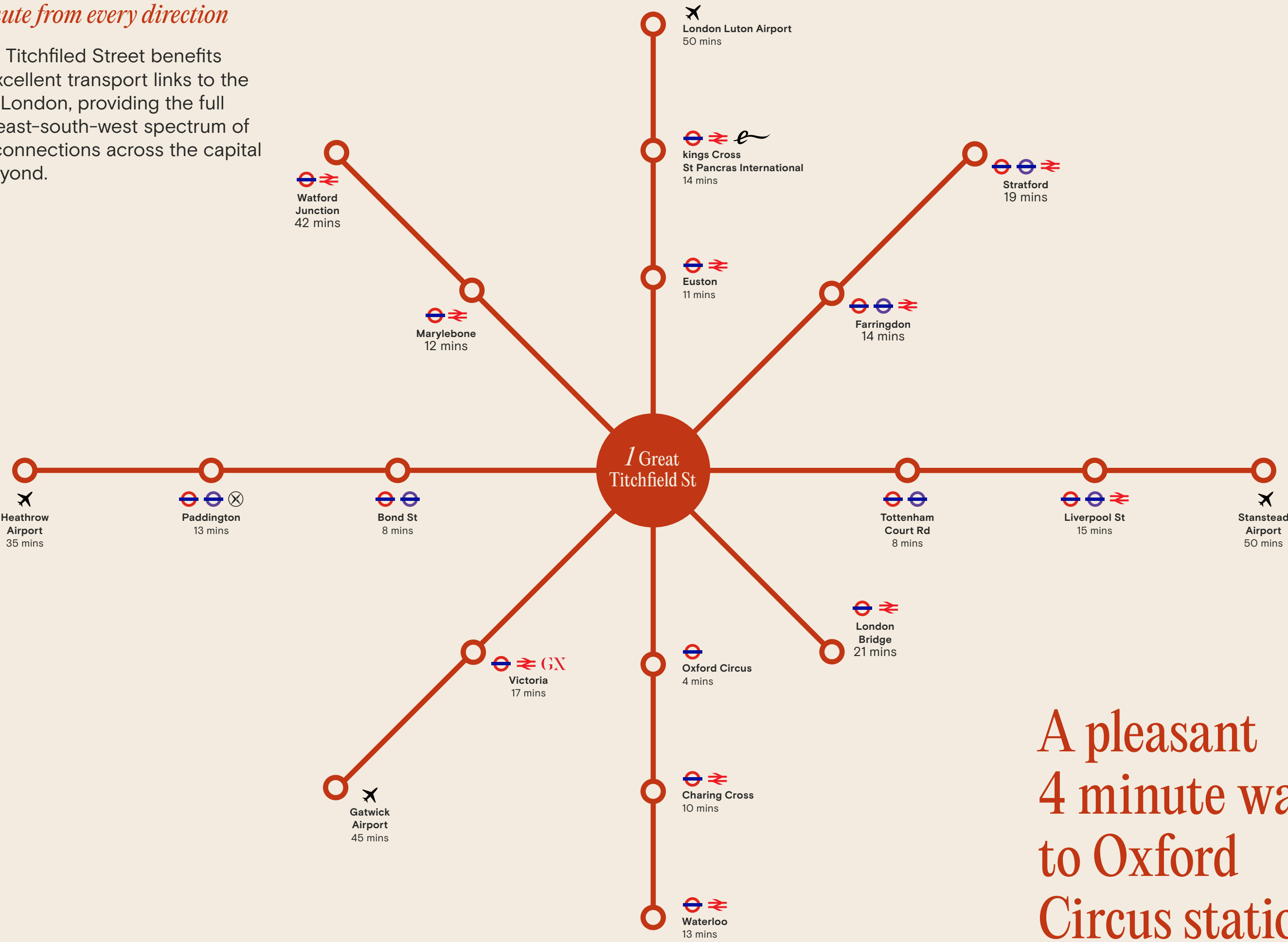
1 Great Titchfield Street

The Location



Commute from every direction

1 Great Titchfield Street benefits from excellent transport links to the rest of London, providing the full north-east-south-west spectrum of travel connections across the capital and beyond.

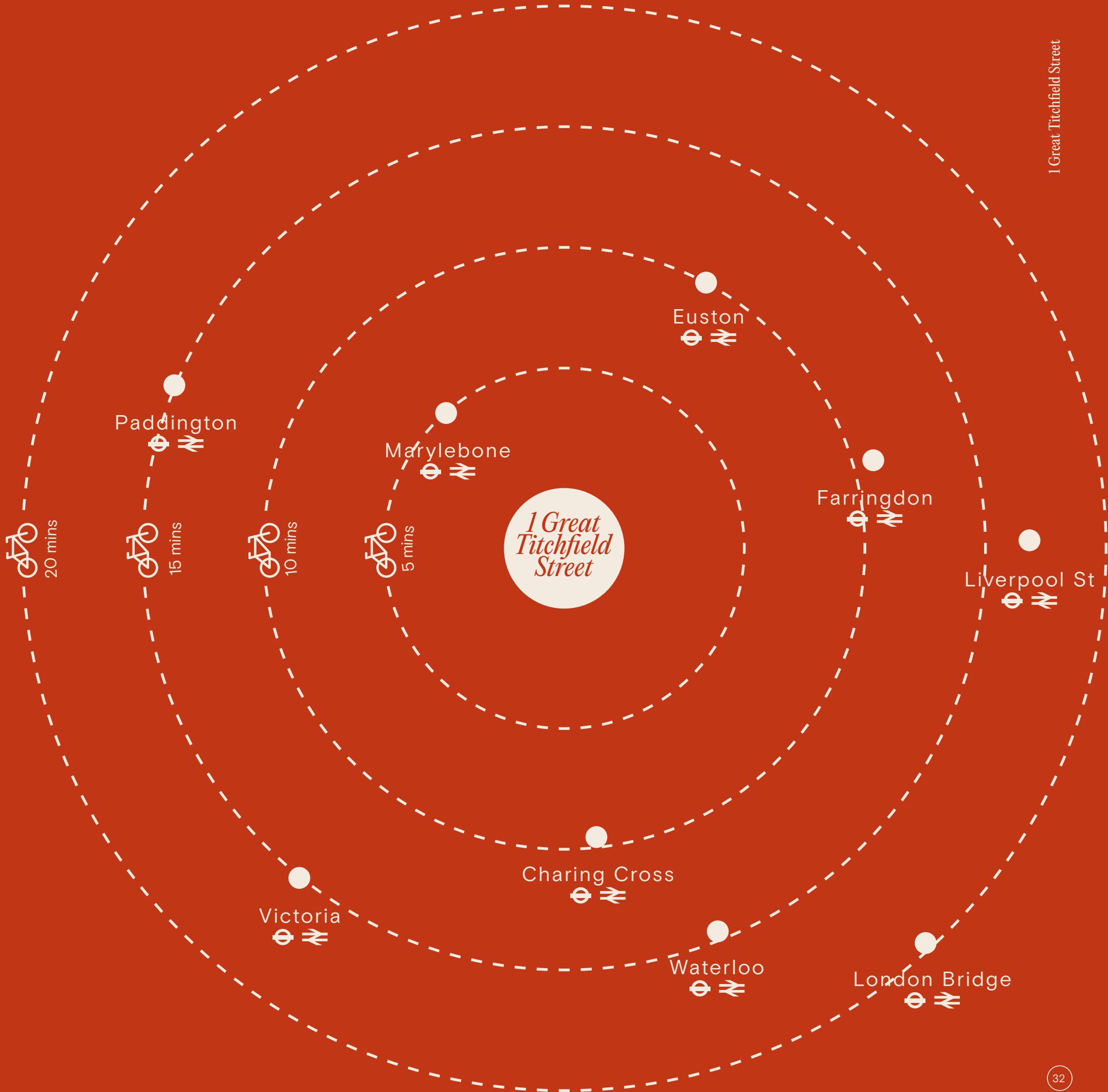


A pleasant  
4 minute walk  
to Oxford  
Circus station



Cycling Network

Set up for cycling with fast and easy journey times to London's key commuting stations and beyond.





FQ

# Life *in* Fitzrovia Quarter



FITZROVIA QUARTER



# FQ

## *Food & Drink*

Rich in history with a notable artistic and Bohemian heritage, today Fitzrovia is known to be a popular destination attracting fashion, medical, creative and media businesses and offers an ever-growing array of dining, shopping, fitness and leisure facilities.





## *Shopping & Lifestyle*



The neighbourhood, tucked away from the hustle and bustle of chain stores of nearby Oxford Street and Regent Street, is home to independent businesses such as niche bars, refined restaurants, conscious cafés, up and coming art galleries and contemporary fashion brands. Moreover, Market Place, housing in elegant period buildings a curated collection of places to eat, drink and shop, is a stone's throw away from the property.







We embrace our  
responsibility to  
continue guiding  
The Langham  
Estate towards a  
truly sustainable  
future.





Environmental

We’re working hard to minimise our impact on the environment through a number of initiatives. These include implementing energy-efficient measures, ensuring sustainable water usage, championing recycling programs and promoting responsible waste management.

Social

Our sustainability pledge extends to promoting well-being within our flourishing neighbourhood: we prioritise our clients’ happiness by providing safe, comfortable and inclusive spaces. In addition, we support local initiatives – such as our loyalty card scheme – and actively work to cultivate community engagement and collaboration.

Governance

Transparency, accountability and ethical practices are the three pillars of our governance practice. We provide stakeholders with accurate reports, pay a living wage and maintain robust protocols to guarantee the health and safety of our tenants. Regular assessments help us identify any areas that we could improve and ensure we continue to uphold the highest standards at every level of our organisation.

Always evolving

Our ESG practices are key to the continual evolution of our business. While we’re aware that this is an ongoing process, we hope our plans to integrate this ESG framework into every aspect of our operations will help us grow into a sustainability leader in London’s property sector. Through collaborating with industry partners, experts, clients and stakeholders to share knowledge, we believe we can drive productive change.





# Contact

1 Great Titchfield Street

For further information , please contact us  
or visit the website

020 7580 5656

Malcolm Cohen  
[malcolm.cohen@langhamestate.com](mailto:malcolm.cohen@langhamestate.com)  
020 7907 4983  
07526 189 462

Daniel Yershon  
[daniel.yershon@langhamestate.com](mailto:daniel.yershon@langhamestate.com)  
020 7907 4986  
07731 985 129

William Spencer  
[william.spencer@langhamestate.com](mailto:william.spencer@langhamestate.com)  
020 7907 4960  
07707 875 082

Any property is offered subject to contract, availability, and confirmation of details. These particulars do not for part of any contract and, whilst believed to correct, parties are recommended to satisfy themselves as to the accuracy. The Lessors or Langham Estate Management Limited, or any person in their employment, cannot make or give any representation or warranty whatsoever in relation to this property. Unless otherwise stated, all prices and rentals quoted are exclusive of any Value Added Tax to which they may be subject. Floorplans are for illustrative purposes only and may not accurately reflect the property's current internal layout.