

volume

light

character

neckinger mills  
162-164 abbey street  
bermondsey se1

for rent or for sale

c.2,300 sq ft

stylish self contained ground  
floor unit with car parking  
within a former victorian  
factory



[www.pilcher.london](http://www.pilcher.london) | 0207399 8600

● neckinger mills, 162-164 abbey street, bermondsey



### accomodation

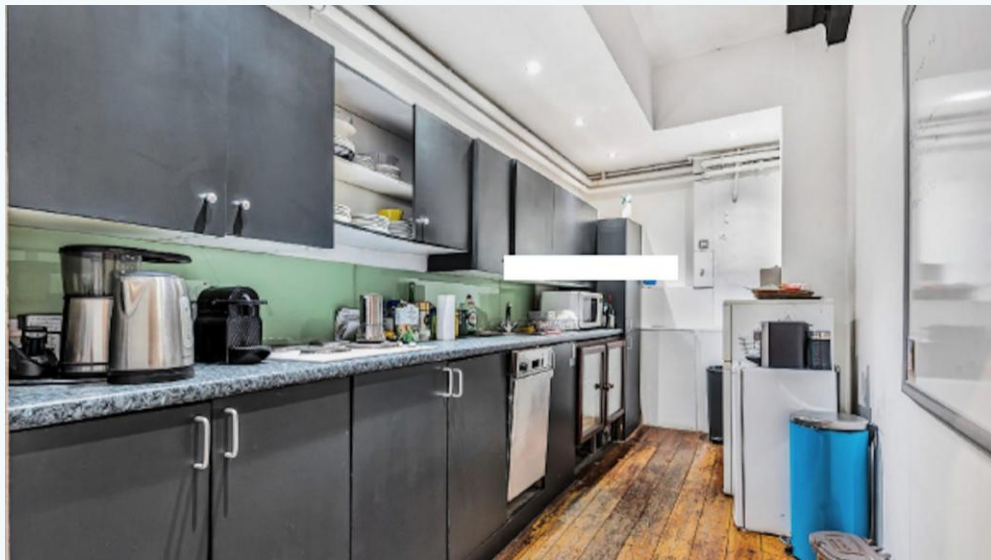
this self contained unit is arranged on the ground floor of neckinger mills which is a brick- built, former victorian factory. the building now comprises this cool office space – c.2,300 sq ft

### location

the property is located on abbey street, close to the junction of jamiaca road, which is in the heart of bermondsey, closest to bermondsey underground station (jubilee line) within a 5 minute walk



● neckinger mills, 162-164 abbey street, bermondsey



● neckinger mills, 162-164 abbey street, bermondsey

### amenities

- self contained
- original warehouse factory
- good natural light
- generous floor to ceiling height
- car parking
- solid wood flooring
- wooden beams
- steel columns
- fully fitted kitchen
- demised wcs
- led lighting

the space is arranged mainly open-plan with a handful of other meeting rooms.

the accommodation is in good condition throughout and benefits from considerable floor to ceiling height and a strong source of natural light

### terms

for rent – c.£27.50 psf pax

for sale - 999 year lease at nil ground rent

price - c.£1.1m subject to contract

### outgoings

rates - c.£8.45 psf pa

service charge - n/a

one of the partners at pilcher london has an interest in this property

● neckinger mills, 162-164 abbey street, bermondsey

**PILCHER●LONDON**

bespoke commercial property consultants

