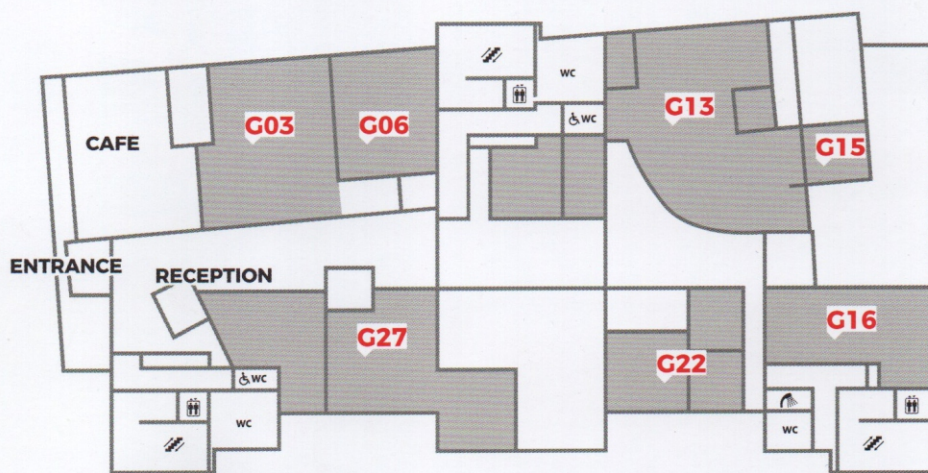


For rent

Flexible office space

boho one

Ground floor 5,498 sq ft

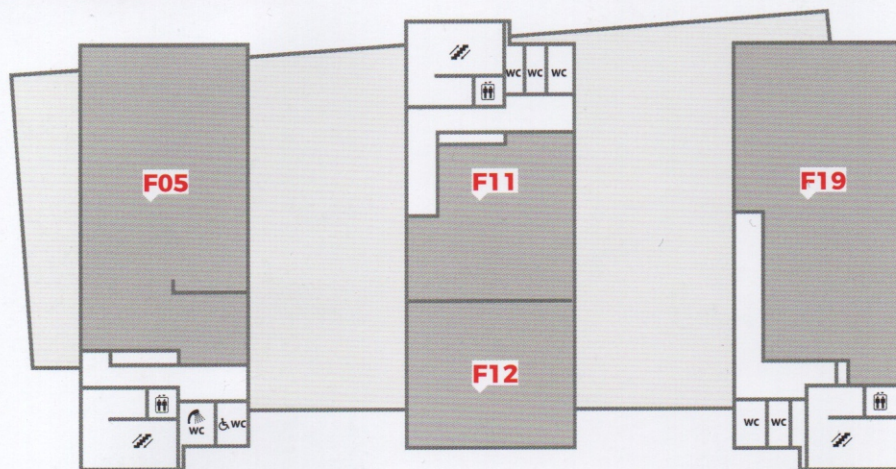


G03 802 sq ft
G06 508 sq ft
G13 774 sq ft

G15 706 sq ft
G16 468 sq ft

G22 535 sq ft
G27 688 sq ft

First floor 5,435 sq ft



F05 1,900 sq ft

F11 773 sq ft

F12 1,034 sq ft

F19 1,728 sq ft

- Offices can be adapted to suit tenants
- Multiple offices can be secured
- 24/7-secure access
- High speed broadband
- Accessible spaces
- Sustainable and environmentally-friendly utilities
- Light and airy offices
- Breakout spaces and private meeting rooms
- Communal kitchen areas and showers

Contact Align's Commercial Agency team on

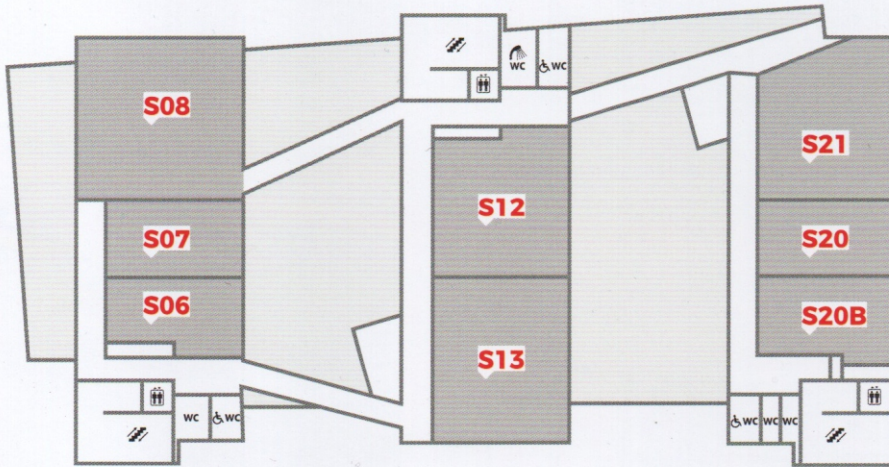
 01609 797 330

christopher.black@alignsurveyors.co.uk
caitlin.parker@alignsurveyors.co.uk

align CHARTERED
SURVEYORS

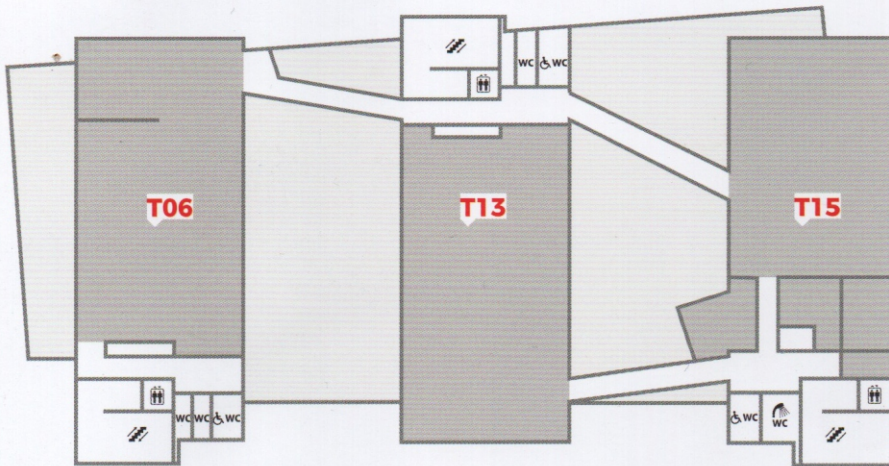
boho one

Second floor 4,835 sq ft



S06 363 sq ft	S12 774 sq ft	S20B 389 sq ft
S07 405 sq ft	S13 809 sq ft	S21 760 sq ft
S08 964 sq ft	S20 371 sq ft	

Third floor 5,809 sq ft



T06 1,900 sq ft	T13 1,902 sq ft	T15 2,007 sq ft
------------------------	------------------------	------------------------



Contact us today
to discuss your
move to Boho

#BepartofBoho

For details and specifications about Boho One,
contact our team today on 01609 797 330

align CHARTERED
SURVEYORS