

OFFICE SUITES TO LET



DUKES HOUSE

HIGH STREET, WINDSOR, SL4 1LD

1ST & 2ND FLOOR SUITES

185 - 479 SQ FT

(17.2 - 44.5 SQ M)

CENTRAL TOWN CENTRE OFFICE SUITES TO LET

Rent: from £42.50 +VAT psf pa

With three suites currently available, finding the perfect space to suit your business will be easy.

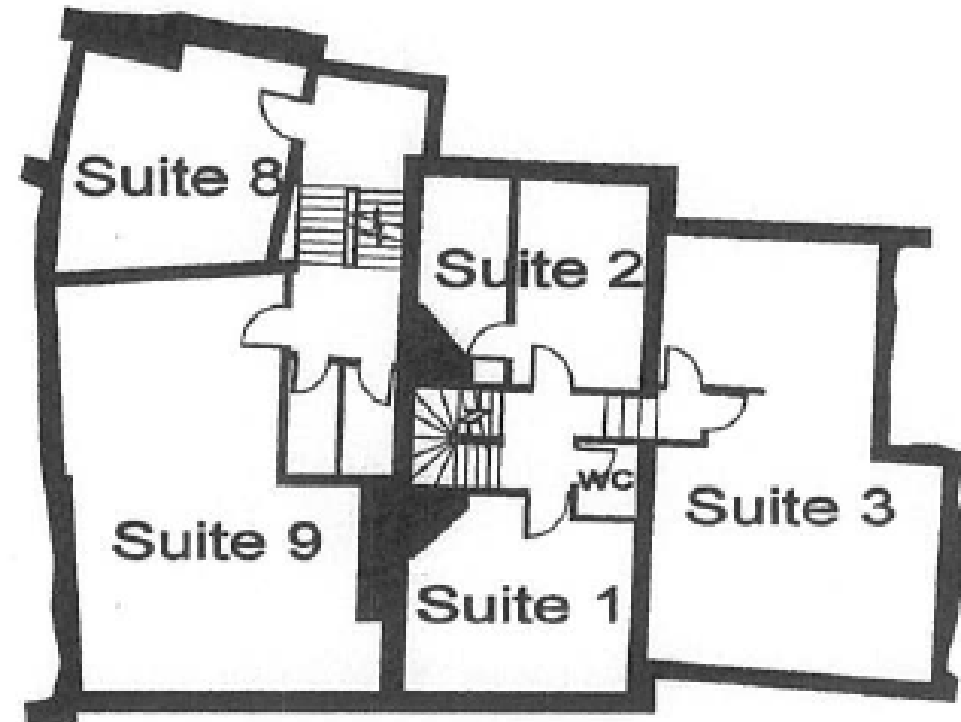
Located on Windsor's High Street, Dukes House is in an enviable location.

The suites have access to communal male and female toilets, and onsite parking can be arranged by way of separate licence (subject to availability).

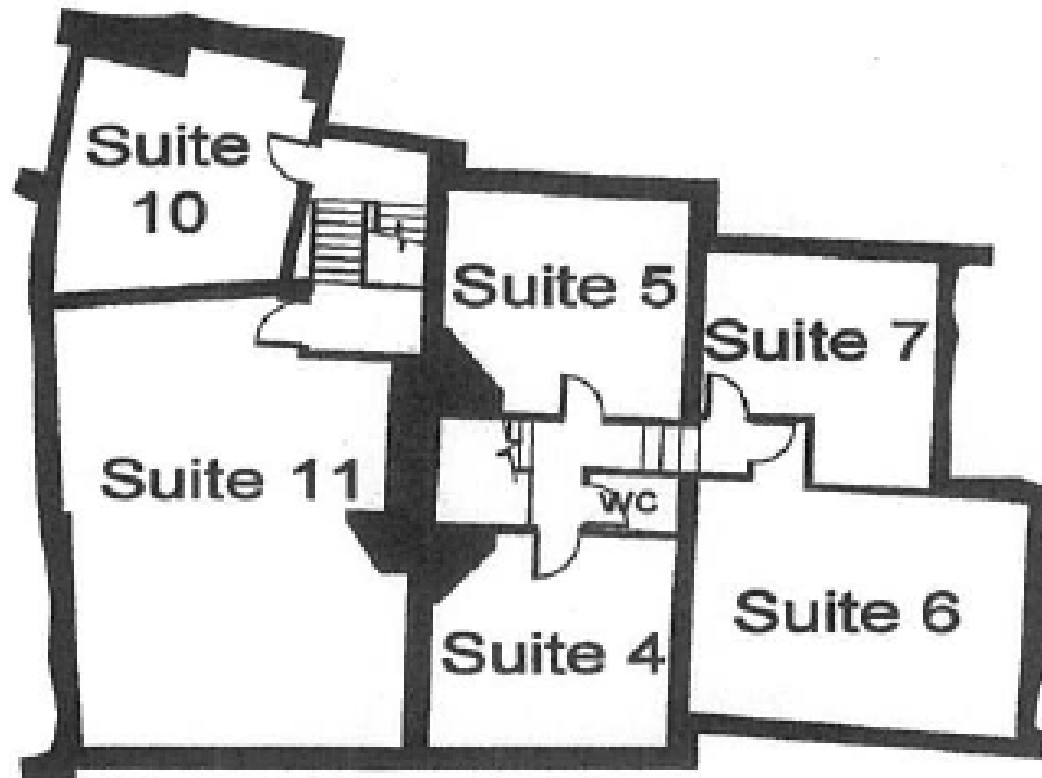


RANGE OF SUITES

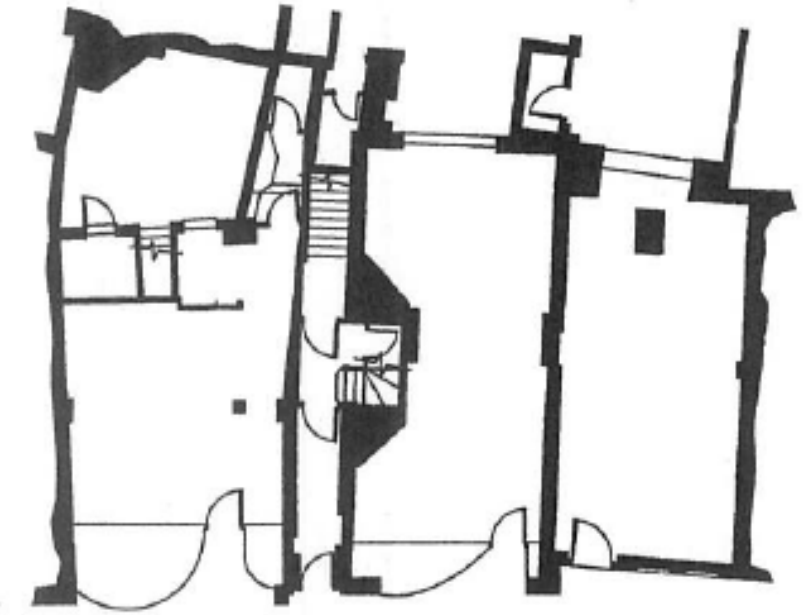
1st Floor



2nd Floor



Ground Floor -
common entrance
to offices



SUITE 1

- 185 sq. ft. (17.18 sq. m.)
- 1st floor

SUITE 2

- 185 sq. ft. (17.18 sq. m.)
- 1st floor

SUITE 9

- 479 sq. ft. (44.5 sq. m.)
- 1st floor







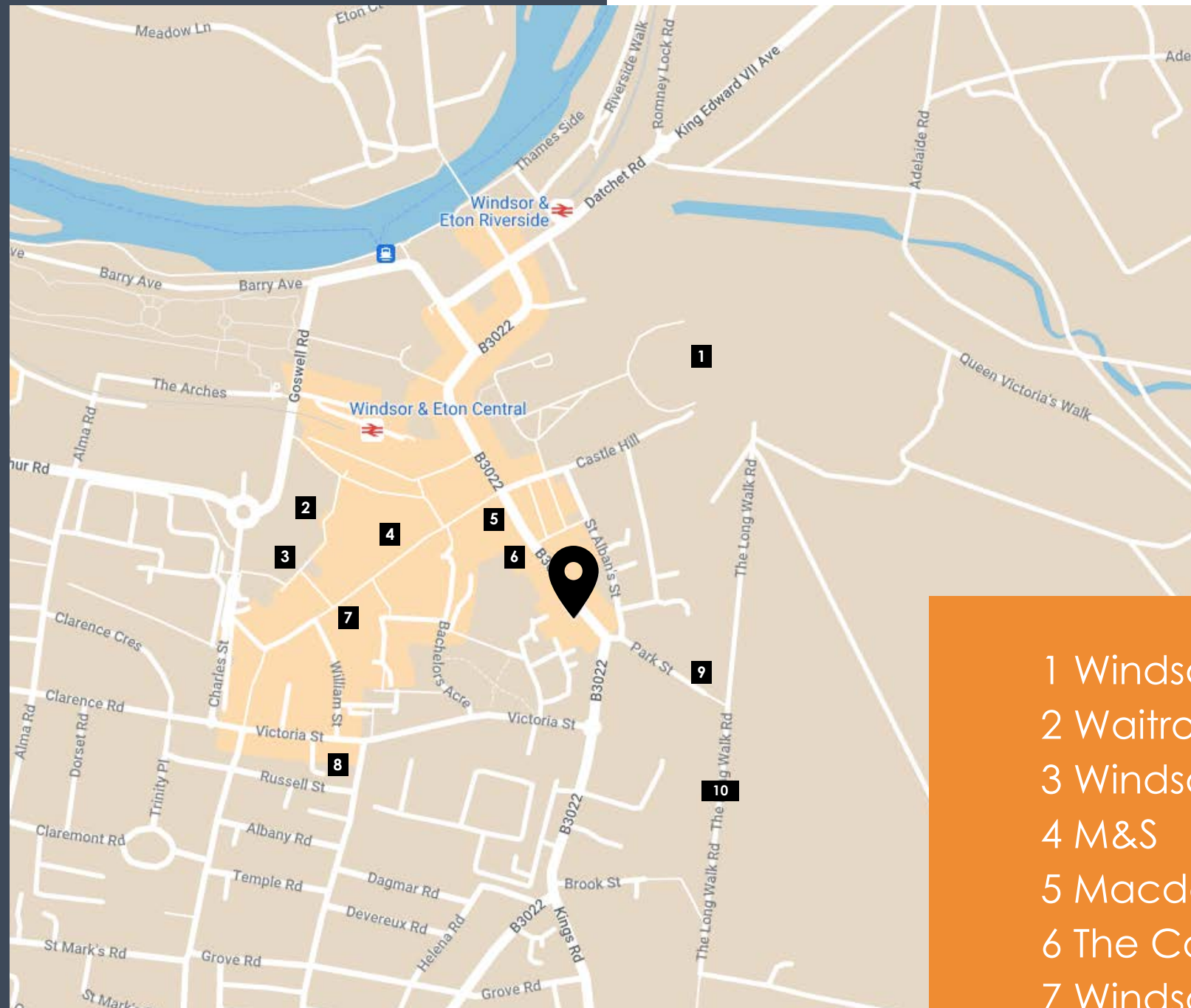




LOCATION

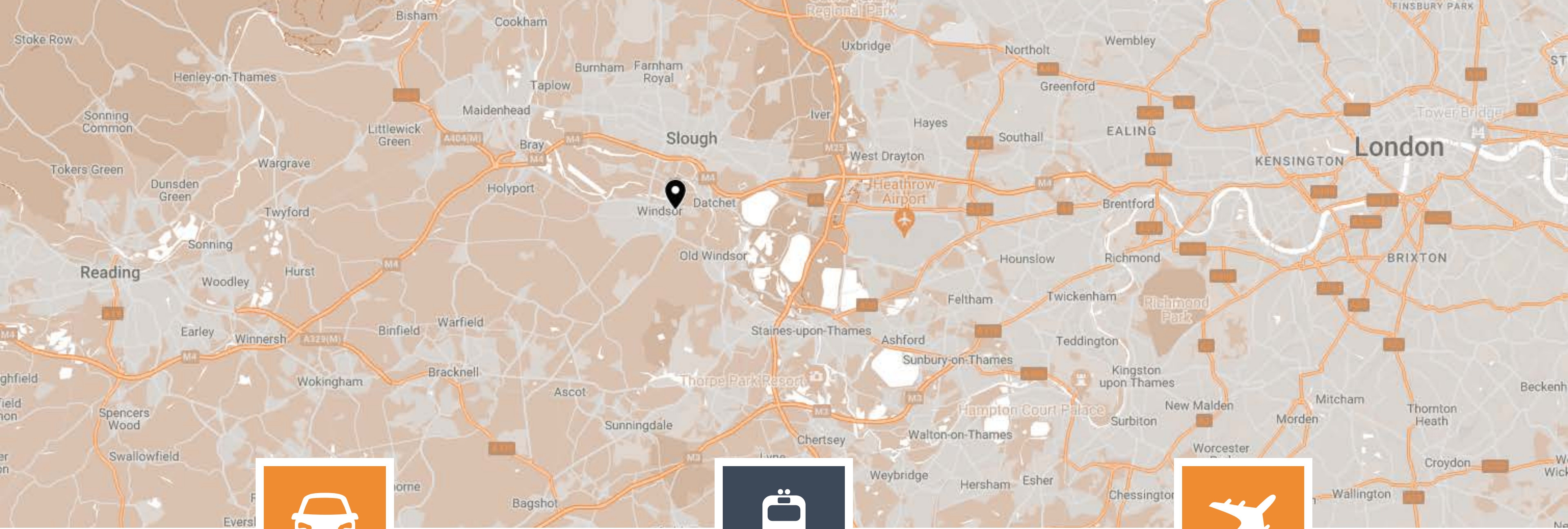
Situated in the heart of the Windsor town centre, Dukes House has an enviable array of amenities right on its doorstep, including an eclectic mix of national and independent retailers, banks, bars and restaurants.

Dukes House is a stones throw away from Windsor Castle and an easy walk to The Long Walk park giving you access to beautiful outside space.



- 1 Windsor Castle
- 2 Waitrose
- 3 Windsor Yards
- 4 M&S
- 5 Macdonald Hotel Windsor
- 6 The Castle Hotel Windsor
- 7 Windsor Post Office
- 8 Victoria Street Car Park
- 9 The Two Brewers
- 10 The Long Walk





CAR

2.7 MILES TO J6 OF M4

Join the motorway network at J6 of the M4 in under 10 minutes.



TRAIN

0.3 MILES TO WINDSOR & ETON CENTRAL

Walk to Windsor & Eton Central station in 6 minutes and Windsor & Eton Riverside in just 7 minutes.



AIRPORT

7.8 MILES TO HEATHROW AIRPORT

Worldwide connections within 15 minutes of Windsor.

GET IN TOUCH



Christopher Thomas

01753 839390

07770 768342

ct@chthomas.com

Owned and managed by:

SORBON
ESTATES

For further information
or to arrange an
inspection please
contact our agent.

Misrepresentation clause. These particulars are set out as a general outline only for the guidance of intending purchasers or lessees and do not constitute the whole or any part of an offer or contract. The information is compiled and given in good faith but without any responsibility whatsoever. Intending purchasers or tenants should not rely on them as statements or representations of fact. April 2024.

Please note that all images including Computer Generated Images (CGI's) are for illustrative and indicative purposes only and furniture is not necessarily included with the lease. Images may include optional upgrades at additional cost. Please check with your Sorbon Estates representative for more information.