



7 Redan Street

Brook Green, London, W14 0AB

Discreet and Exemplary Commercial Premises

775 sq ft
(72 sq m)

- Super-quiet residential back-water.
- Ground & Basement of a Fine Period Building.
- Extremely well balanced spaces.
- Fitted to an exemplary standard.
- Private Entrance.
- Available November 2025.

7 Redan Street, Brook Green, London, W14 0AB

Summary

Available Size	775 sq ft
Rent	£20,000 per annum
Business Rates	Upon Enquiry
EPC Rating	C (68)

Description

An extremely rare and genuinely unique set of office/consultancy spaces that are hewn quite perfectly from this prominent corner period building.

A private entrance leads into a superb open-plan office space with generous amounts of natural light, high ceilings and an excellent sense of proportion throughout. An internal staircase leads down to a fabulous further meeting space/office area with extensive built-in fittings, a recently fitted kitchen and high quality internal décor throughout. The property is available as of November 2025 on a new lease at terms to be agreed.

Location

Redan Street (W14) is a residential street in the Brook Green area of London, located in the borough of Hammersmith and Fulham. It is known for being a quiet and peaceful street within the Brook Green conservation area, with numerous local shops, pubs, and restaurants nearby. Excellent transport links are available through nearby stations like Hammersmith and Shepherd's Bush, which offer access to the Central, District, Piccadilly, and Hammersmith & City lines.

Location and neighbourhood:

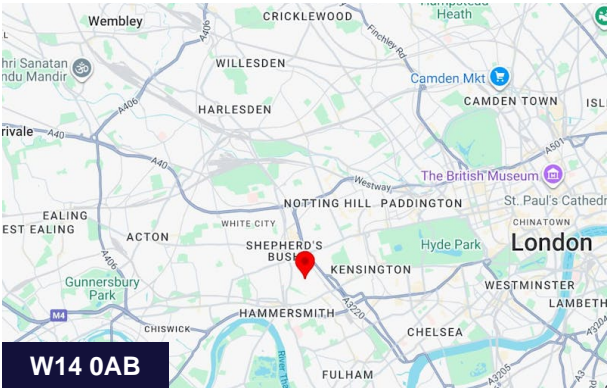
- Area: Brook Green, W14, within the borough of Hammersmith and Fulham.
- Character: A quiet, residential street known for its peaceful atmosphere and local amenities.
- Surroundings: Close to the shops, pubs, and restaurants of Brook Green, as well as large shopping complexes like Westfield London.

Transport links

- Nearest Tube stations:
 - o Hammersmith (Piccadilly, District, and Hammersmith & City lines)
 - o Shepherd's Bush (Central line)
 - o Kensington Olympia (District line - part service, and Southern Rail)

Local amenities

- Shopping and dining: Numerous local shops, restaurants, and gastro pubs are within walking distance.
- Entertainment: Close to large retail and leisure complexes, including Westfield London.



Viewing & Further Information



Chris Ryan
07867 413278 | 020 7355 0285
cryan@winkworth.co.uk

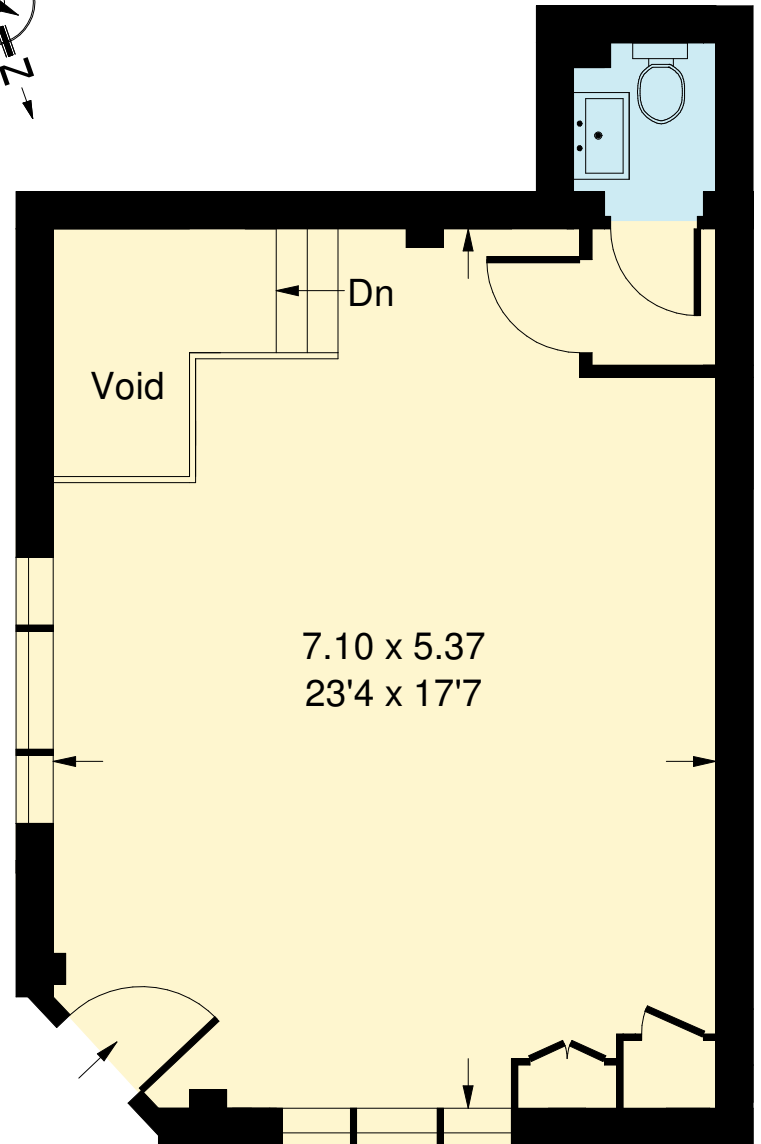
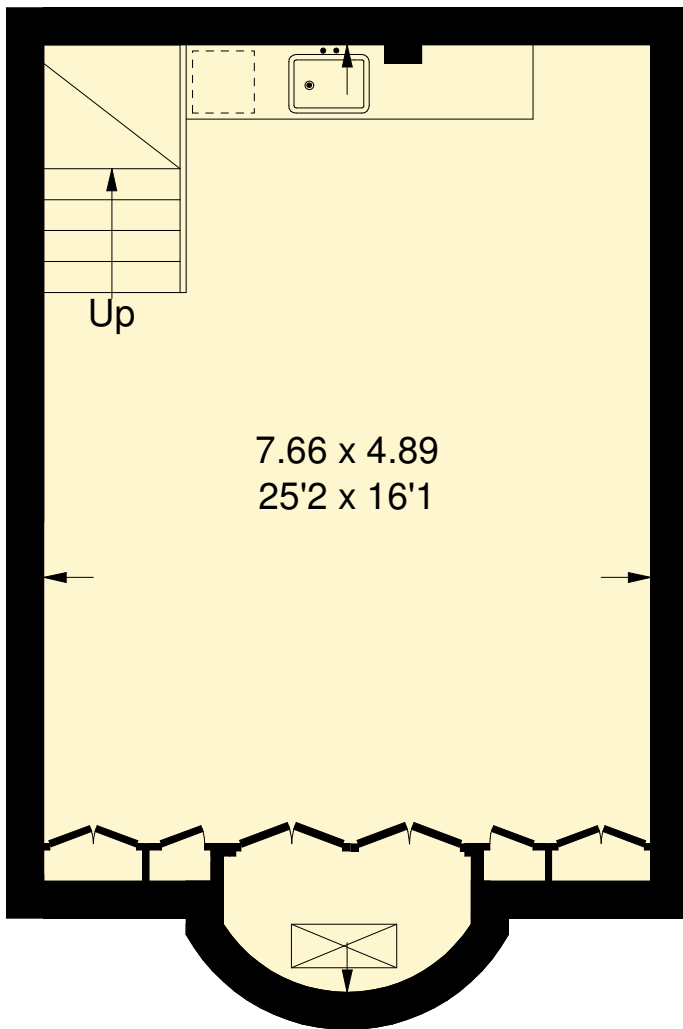
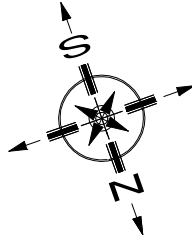



Adam Stackhouse
07889 510036 | 020 7355 0285
astackhouse@winkworth.co.uk

The above information contained within this email is sent subject to contract. These particulars are for general information only and do not constitute any part of an offer or contract. All statements contained therein are made without responsibility on the part of the vendors or lessors and are not to be relied upon as statement or representation of fact. Intending purchasers or lessees must satisfy themselves, by inspection, or otherwise, as to the correctness of each of the statements of dimensions contained in these particulars. Generated on 13/10/2025

Redan Street, W14

Approx. Gross Internal Area = 72 sq m / 775 sq ft
(Excluding Void)



 = Reduced headroom
below 1.5 m / 5'0

Lower Ground Floor

Ground Floor