

79 WENTWORTH STREET,  
E1

903 SQ FT

SPITALFIELDS RETAIL/CAFÉ OPPORTUNITY

FOR RENT

WENTWORTH STREET SPITALFIELDS E1





DAUNS  
Cafe-deli-bar Scandinavian Vegan

ALISEZ  
Cafe-deli-bar Scandinavian Vegan

PALONA CAFE  
PALONA CAFE  
PALONA CAFE

renova  
FM AND DEVELOPMENT  
CONSTRUCTION - RENOVAT ONS - BLOCK MAINTENANCE  
0208 422 4280  
www.renovafm.com



BEAUTY & NAILS  
PETTICOAT LANE

HomePop  
ENJOY THE TASTE OF JAZZA

## DESCRIPTION

The unit occupies the ground and lower ground floors of this prominent period property, which was converted to provide a self-contained retail unit.

The unit has been extensively refurbished and should be of strong interest to a range of café, high-street and other retailers, which should benefit from the high footfall of Petticoat Lane Market.

## AMENITIES



E CLASS USE



7 DAY TRADE



GOOD FOOTFALL



GOOD FRONTAGE



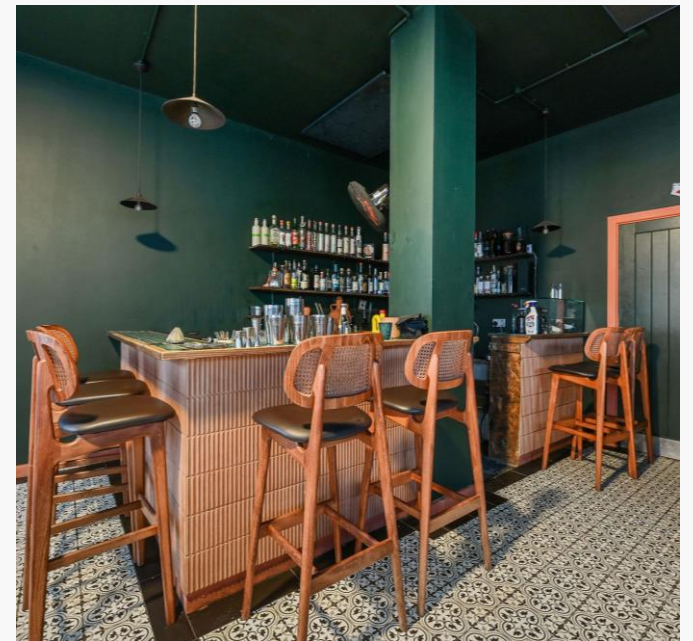
EXCELLENT  
TRANSPORT LINKS



PRIME  
LOCATION

## SPITALFIELDS RETAIL/CAFÉ FOR RENT





## TRANSPORT

Aldgate East - 2 min walk



Liverpool Street – 8 mins



Aldgate – 5 mins

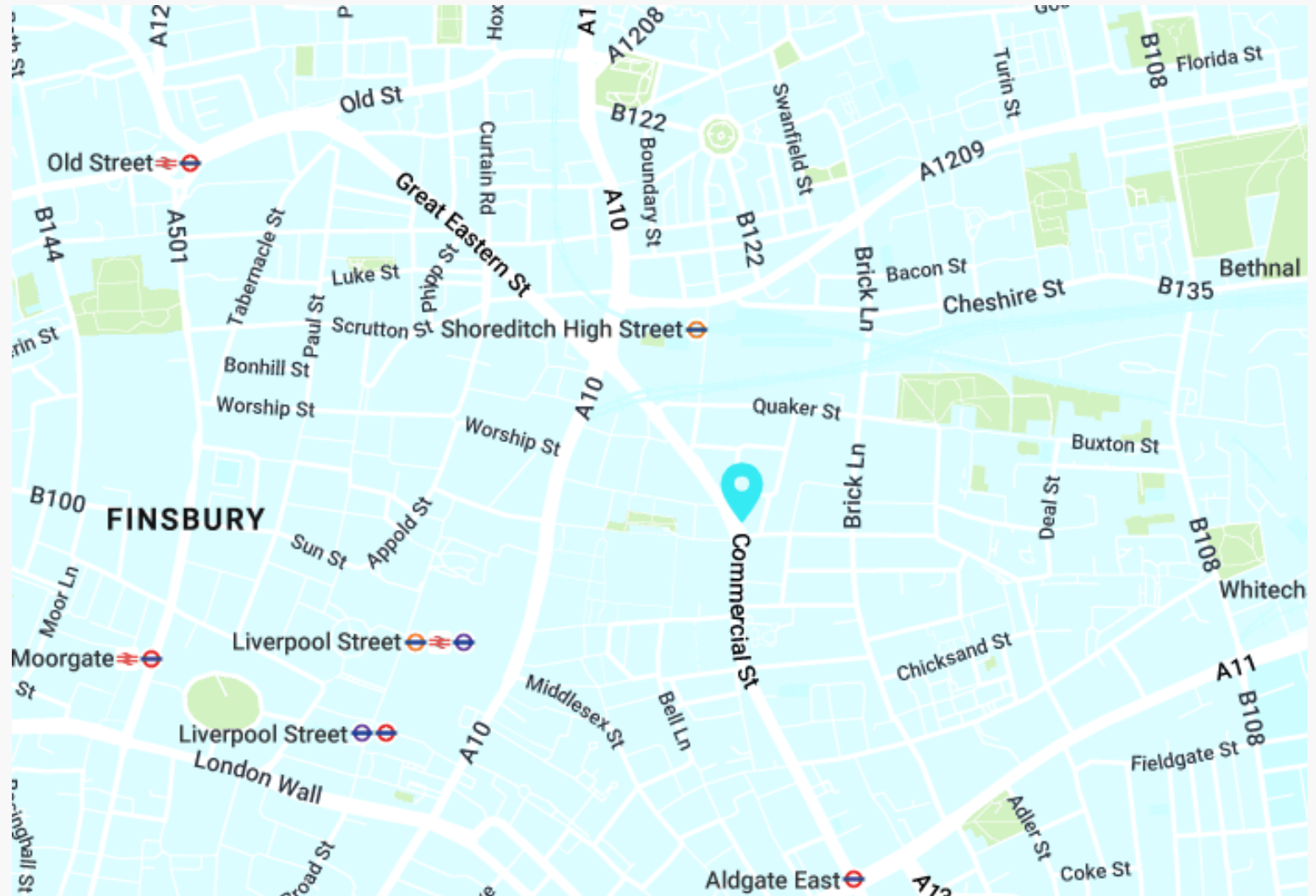


## AREA

Situated on the north side of Wentworth Street, close to the junction with Commercial Street, the property lies within close proximity to Spitalfields and Aldgate East.

Being moments from Petticoat Lane Market provides easy access to a range of other prominent market retailers. Located within a 2-minute walk of Liverpool Street Station, Wentworth Street is seamlessly connected with the rest of London through its excellent transport links.

## LOCATION



## AVAILABILITY

UNIT	SIZE (SQ FT)	STATUS	RENT (PA)	RATES (PSF)	SERVICE CHARGE (PSF)	TOTAL (PCM)
G & LG	903	Available	£45,000	£15.61	TBC	£4,925

### LEASE

A new lease to be contracted outside the Landlord & Tenant Act

### TIMING

Available immediately

### CONTENT

[View on our website](#)



### RATES

The rates given are a guide and Interested parties should make their own enquiries with the local authority.

### VAT

VAT is applicable.

# VIEWINGS VIA SOLE AGENTS

**BELCOR**

020 7375 3444  
agency@belcor.london  
www.belcor.london

## TEAM



**DANIEL JACKSON**  
**AGENCY**  
dj@belcor.london  
07725 203254



**JACOB DOBRIN**  
**AGENCY**  
Jacob@belcor.london  
07956 195700