

LH
LIGHTHAUS
LIVERPOOL

1,329 SQ FT / 123.47 SQM

EXCITING NEW WATERFRONT
RETAIL / LEISURE SPACE

TO LET

DEVELOPMENT BY

Starlight

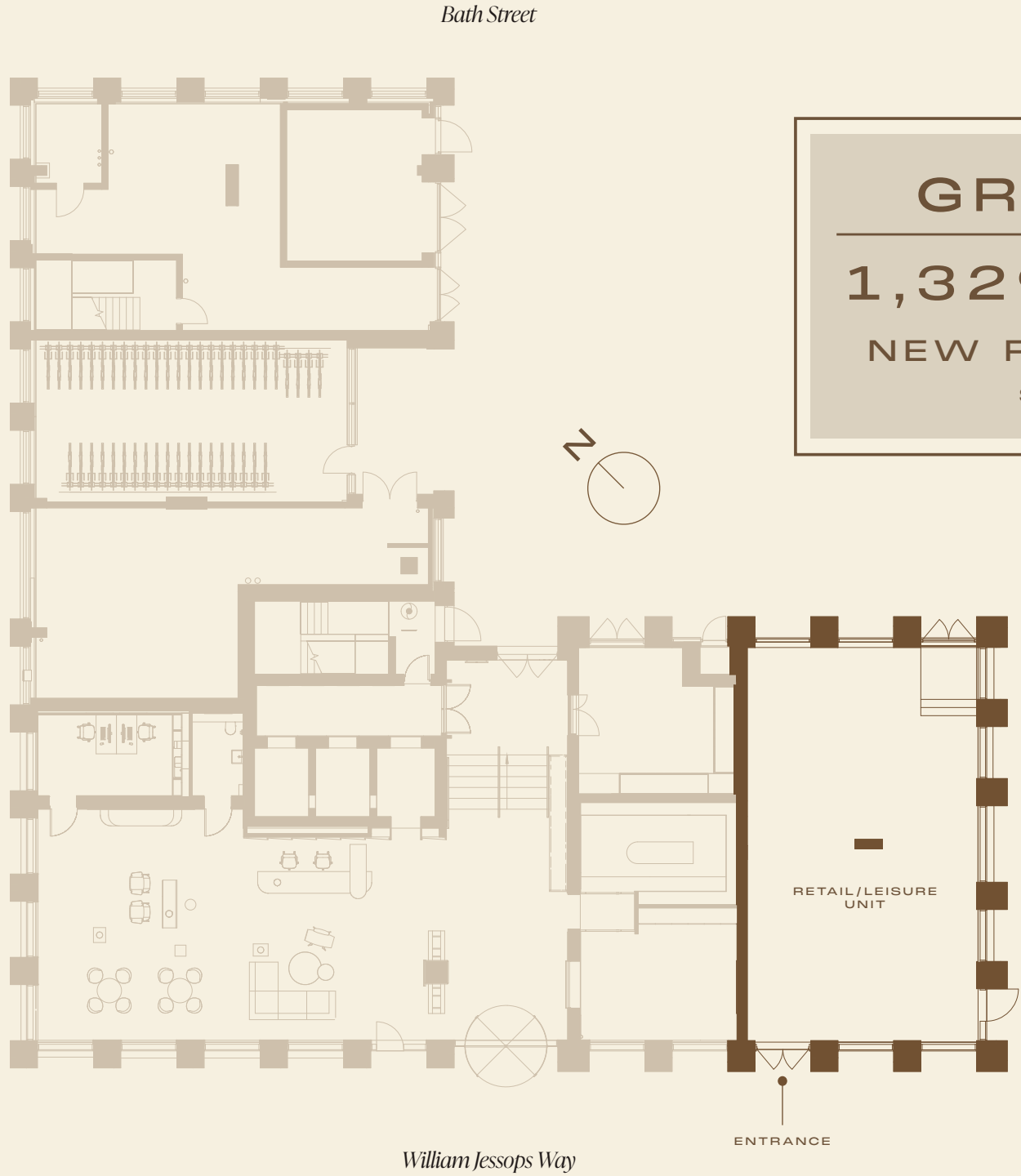
2 WILLIAM JESSOP WAY, LIVERPOOL L3 1EW



RETAIL / LEISURE UNIT



* FLOOR PLANS NOT TO SCALE. FOR INDICATIVE PURPOSES ONLY



GROUND FLOOR

1,329_{SQFT} / 123.47_{SQM}

NEW RETAIL/LEISURE SPACE

SHELL & CORE (CLASS E)

A SPACE TO SHINE

Situated on William Jessop Way, this ground floor unit offers a prime waterfront position on Prince’s Dock. Set within a high-footfall area, the unit benefits from excellent visibility, generous ceiling heights and direct frontage onto a key pedestrian route. Just a 10-minute walk from James Street Station and 23 minutes from Liverpool Lime Street, this is a rare opportunity to secure a Class E space in one of the city’s most exciting mixed-use destinations.

WATERFRONT LOCATION

HIGH VIABILITY FRONTAGE

FLOOR-TO-CEILING WINDOWS

EXTERNAL TRADING SPACE

A DESTINATION
OF DISINCTION

- MOORFIELDS
8 MINS WALK
- LIVERPOOL ONE
8 MINS WALK
- JAMES STREET
STATION
10 MINS WALK
- LIVERPOOL
CENTRAL STATION
16 MINS WALK
- HAMILTON
SQUARE
18 MINS WALK
- LIVERPOOL LIME
STREET STATION
23 MINS WALK



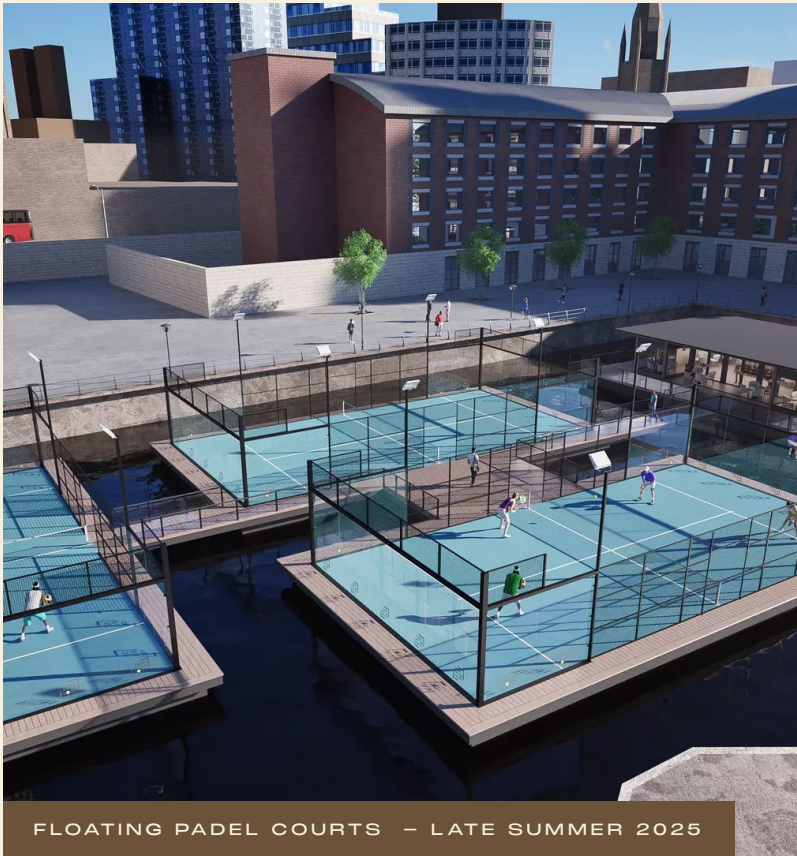
* ALL TIMES ARE APPROXIMATE AND BASED ON GOOGLE MAPS. ALL LOCATIONS START FROM 2 WILLIAM JESSOP WAY, LIVERPOOL L3 1EW

IN GOOD COMPANY

ILLUMINATED LIVING AWAITS

Currently under construction, Lighthouse will deliver 278 new rental apartments for up to 600 residents within Liverpool Waters. This vibrant emerging neighbourhood is set on Prince’s Dock, beautifully positioned along the River Mersey. The location places you at the heart of Liverpool’s iconic waterfront, with the historic docklands at your feet and the dynamic city centre just minutes away.

Designed for modern lifestyles, the development includes a curated range of resident amenities, including a rooftop sky lounge and terrace on the 11th floor with panoramic views of the River Mersey and city skyline. A private fitness centre, flexible meeting spaces and thoughtfully designed communal areas offer both convenience and community.



LIVERPOOL WATERS

A bold new chapter for Liverpool’s iconic docklands. Liverpool Waters is a £5 billion regeneration scheme transforming 2 million sq.m. of former industrial land into five distinct neighbourhoods. Each one is alive with energy, ambition and purpose. Designed for the way people live, work and connect today, it’s a vision that redefines what a waterfront can be.

Princes Dock is already setting the tone. Framed by panoramic river views and the Royal Liver Building, it’s home to Grade A workspaces, contemporary residences, the Malmaison and Crowne Plaza hotels, and the Liverpool International Cruise Liner Terminal. With the Isle of Man Ferry Terminal now open, WYLD Sauna launched, and floating padel courts and a floating sauna arriving in late summer 2025, Liverpool Waters is becoming more than a destination. It’s a thriving waterside community in motion.





INTERESTED? LET’S TALK

For further information and to arrange a viewing of this standout unit in Liverpool’s most exciting waterfront destination, please contact the leasing team:

AGENT



TIM LETTS
07990 516 673
0161 260 0061
tletts@ltlproperty.com

DEVELOPMENT BY



LIGHTHAUSLIVERPOOL.CO.UK

ADDITIONAL

TERM

Available on a new lease.

RENT

Upon request.

RATES

To be assessed.

LEGAL COSTS

Each party to bear their own costs.

EPC

Available on request.

USE CLASS

E.

SPECIFICATION

Power Provision 300 Kva / Gas capped off.

Misrepresentation Act: The agent, for themselves and for the vendors or lessors of this property for whom they act, give notice that: (i) these particulars are a general outline only, for the guidance of prospective purchasers or tenants, and do not constitute the whole or any part of any offer or contract; (ii) the agent cannot guarantee the accuracy of any description, dimensions, references to condition, necessary permission for use and occupation and any other details contained herein and prospective purchasers or tenants must not rely on them as statements of fact or representation and must satisfy themselves as to their accuracy; (iii) no employee of the agent has any authority to make any representation or warranty or enter into any contract in relation to the property; (iv) prices/rents quoted in these particulars may be subject to VAT; (v) the agent will not be liable, in negligence or otherwise, for any loss arising from use of these particulars. Any photographs and plans attached to these particulars were correct at the time of production and are for reference, rather than fact. May 2025.