

TERMINAL WAREHOUSE 2

VICTORIA QUAYS // CANAL BASIN
SHEFFIELD // CITY CENTRE



TERMINAL WAREHOUSE 2

UNIQUE WORKING ENVIRONMENT

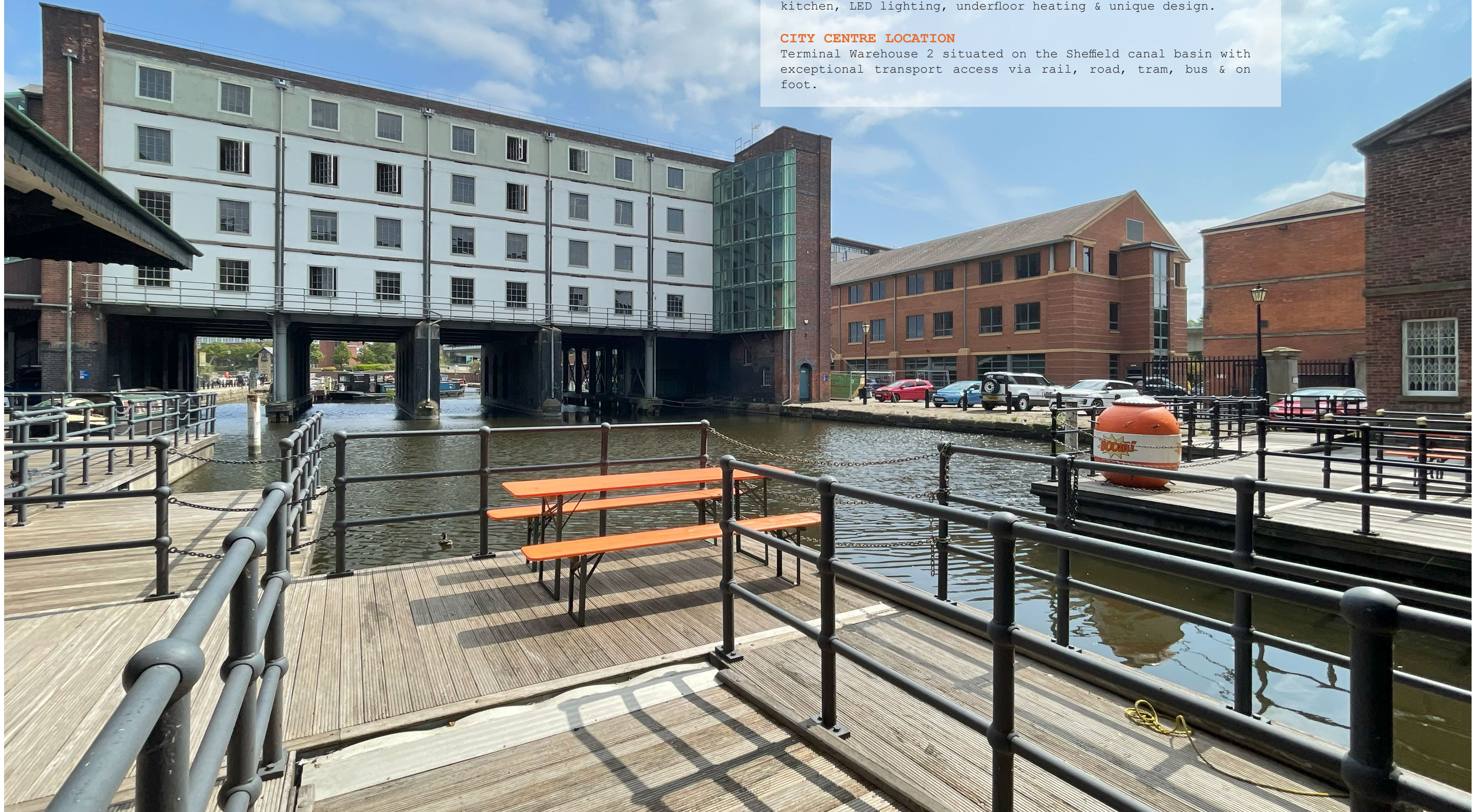
The historical 19th Century warehouse is situated in Sheffield's canal basin with original brick work and iron beam structure.

OUTSTANDING SPECIFICATION

Newly renovated open plan office/event space with high spec kitchen, LED lighting, underfloor heating & unique design.

CITY CENTRE LOCATION

Terminal Warehouse 2 situated on the Sheffield canal basin with exceptional transport access via rail, road, tram, bus & on foot.





LOCATION

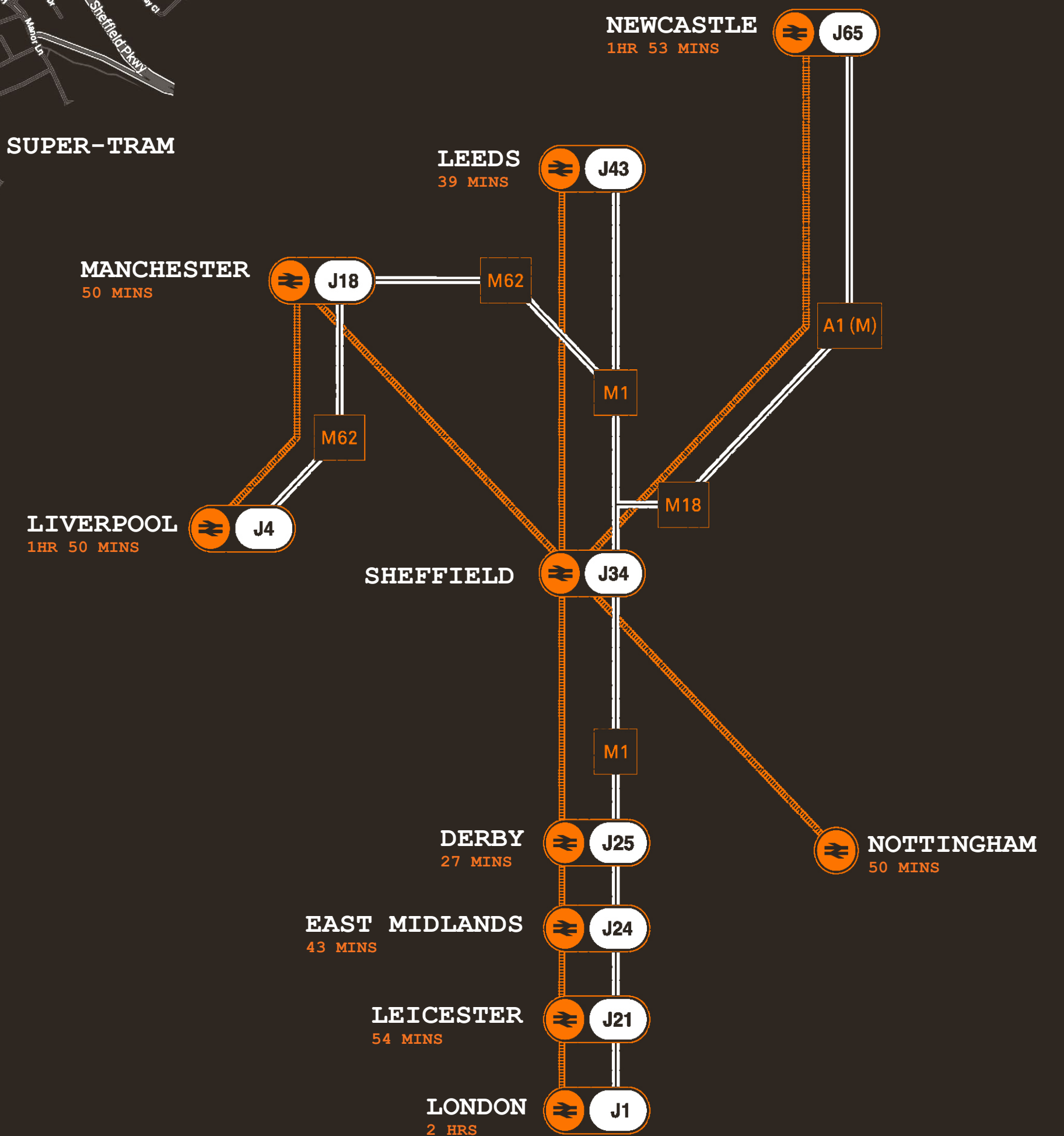
Terminal warehouse 2 is situated within the heart of the city with a 5 - 10 minute walk to Sheffield bus interchange, railway station & tram stops. The Fitzalan Square/Ponds Forge Super-tram stop under 5 minutes walk away. Park square roundabout is less than 500 yards away, leading to Junction 33 of the M1.

TRANSPORTATION

Terminal 2 Warehouse accessible location offers a business an excellent location, from the short journey to both transport links and the city centre. This means its easy for your employees to ditch the car and use public transport or walk to work, allowing us the save the planet one step at a time.

CAR PARKING

Terminal 2 Directors get annual parking passes and visitors can use day tickets with barrier secure parking from VQ Management. The Quays Car Park (75m) is £3.50 10hrs with cheaper season tickets. Q-Parks opposite (85m) is £12.50 12 hrs and has EV charging.

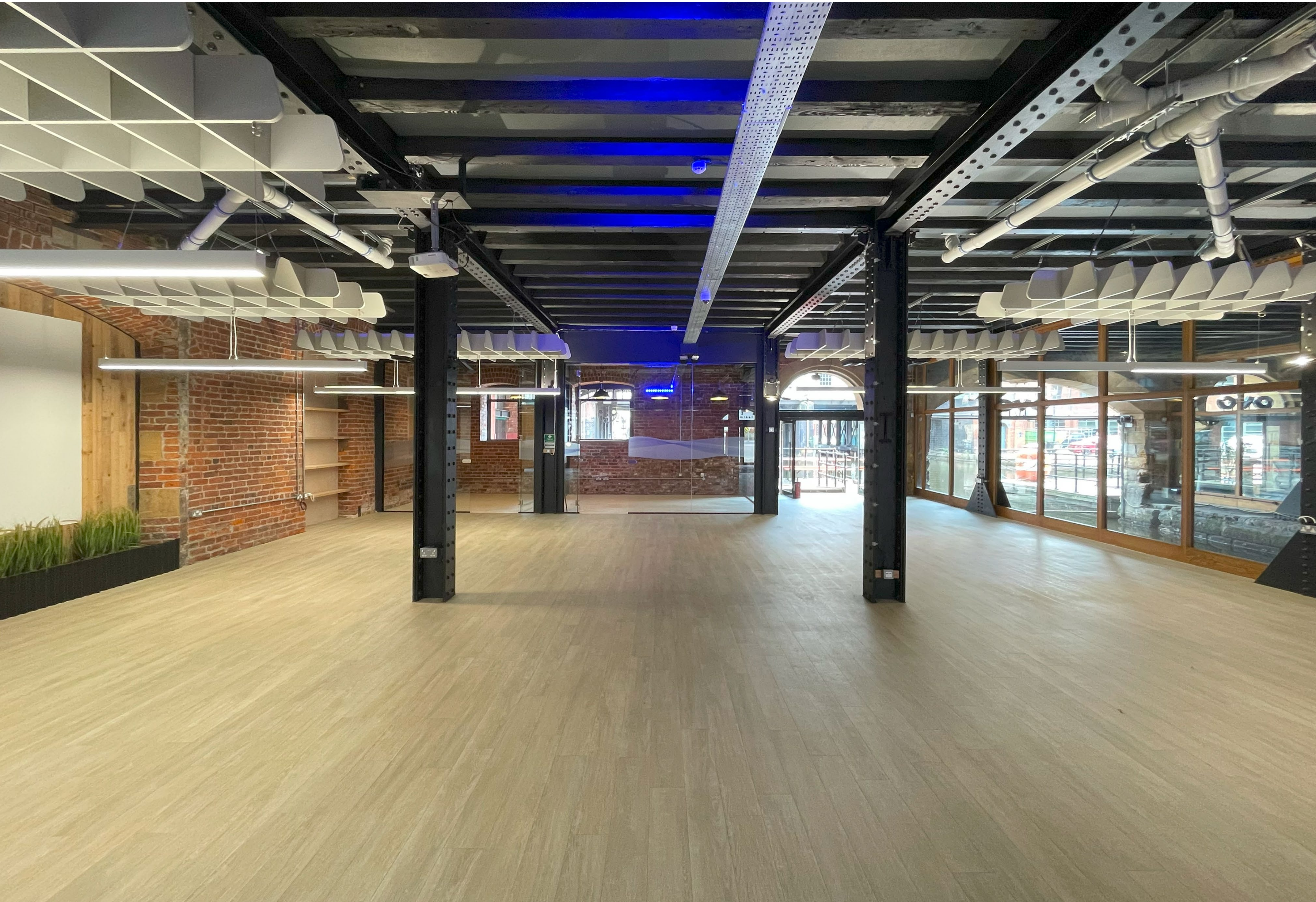




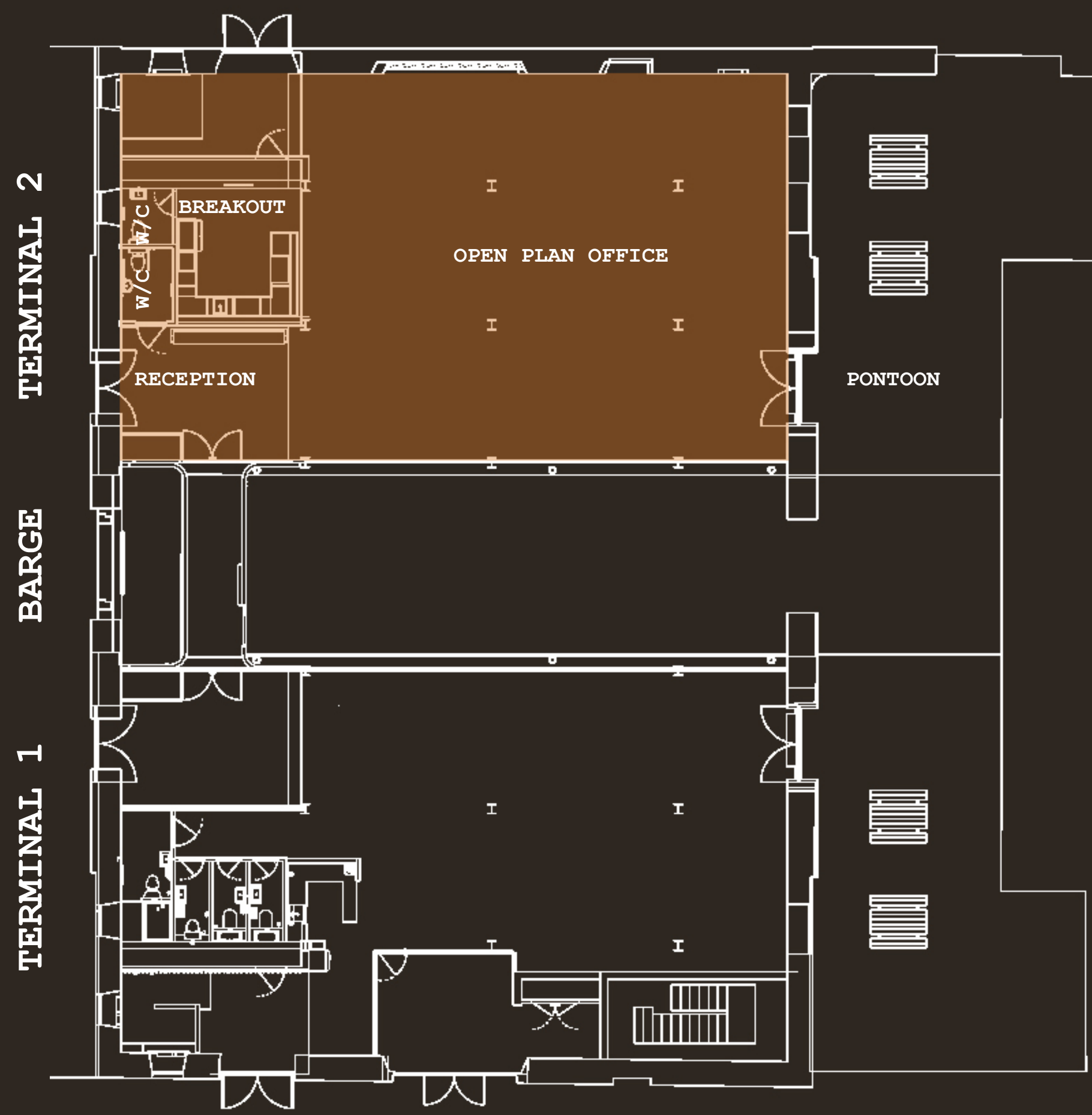
SPECIFICATION //

- Unique historic building
- City centre location
- Flexible open plan office
- High spec kitchen area
- Underfloor heating
- Disabled WC facilities
- LED lighting
- Basement area
- Floating pontoon on canal as shared space with Ride Shotgun - can be used for Lunch / Daytime work tables





GROUND FLOOR PLAN // 2440 SQ FT

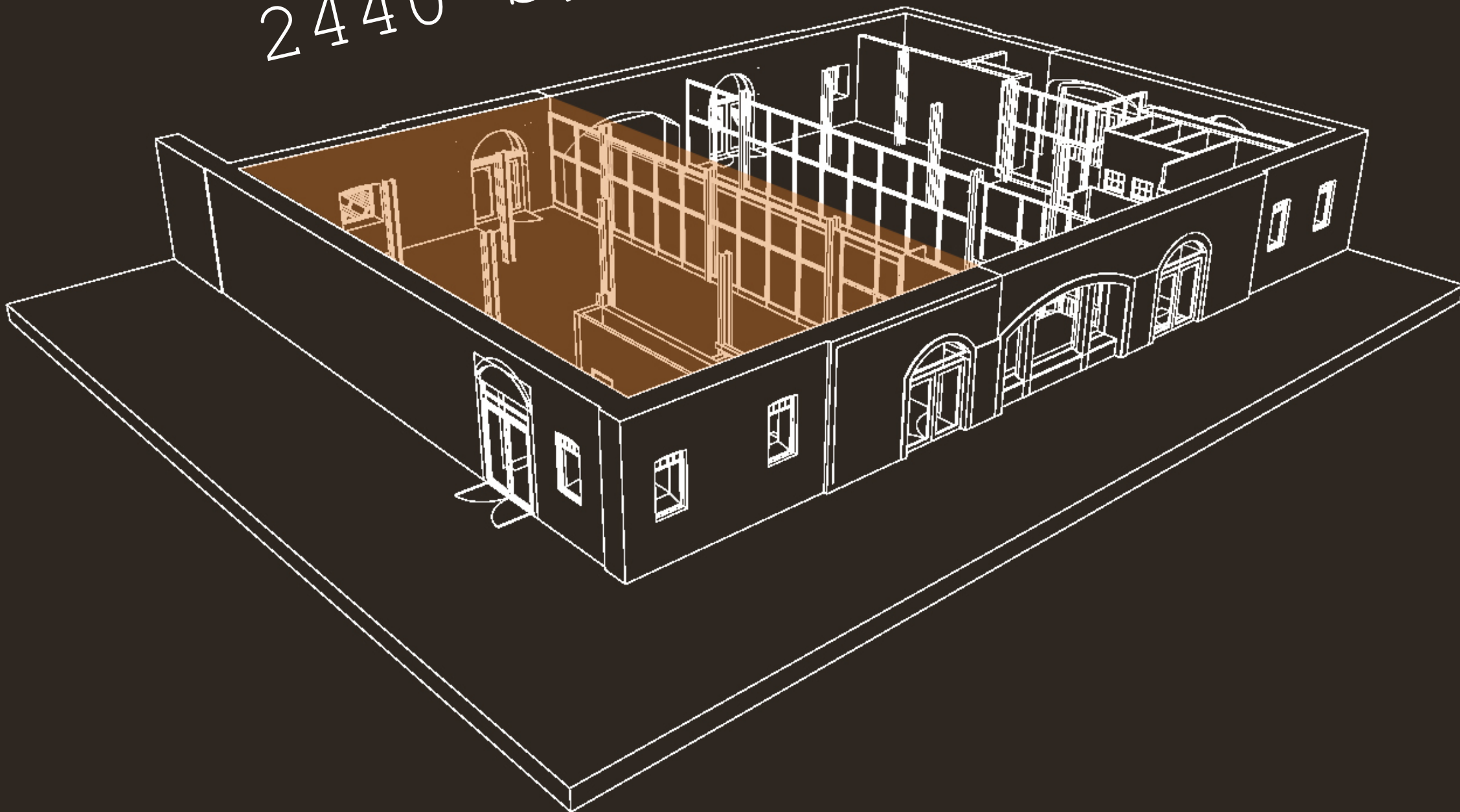
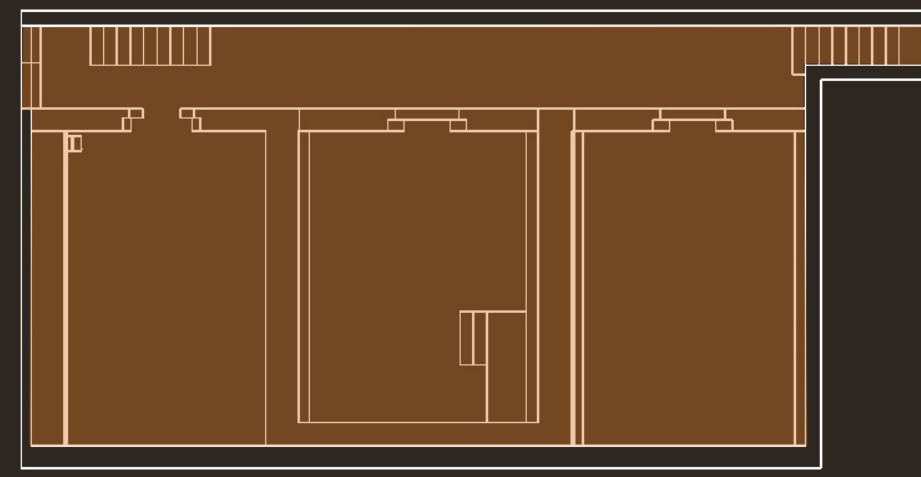


WHAT'S AVAILABLE

This historical building offers a total area of 3740 sq ft over both floors, a large open plan office with a unique design finished to a high quality and retains the buildings original features.

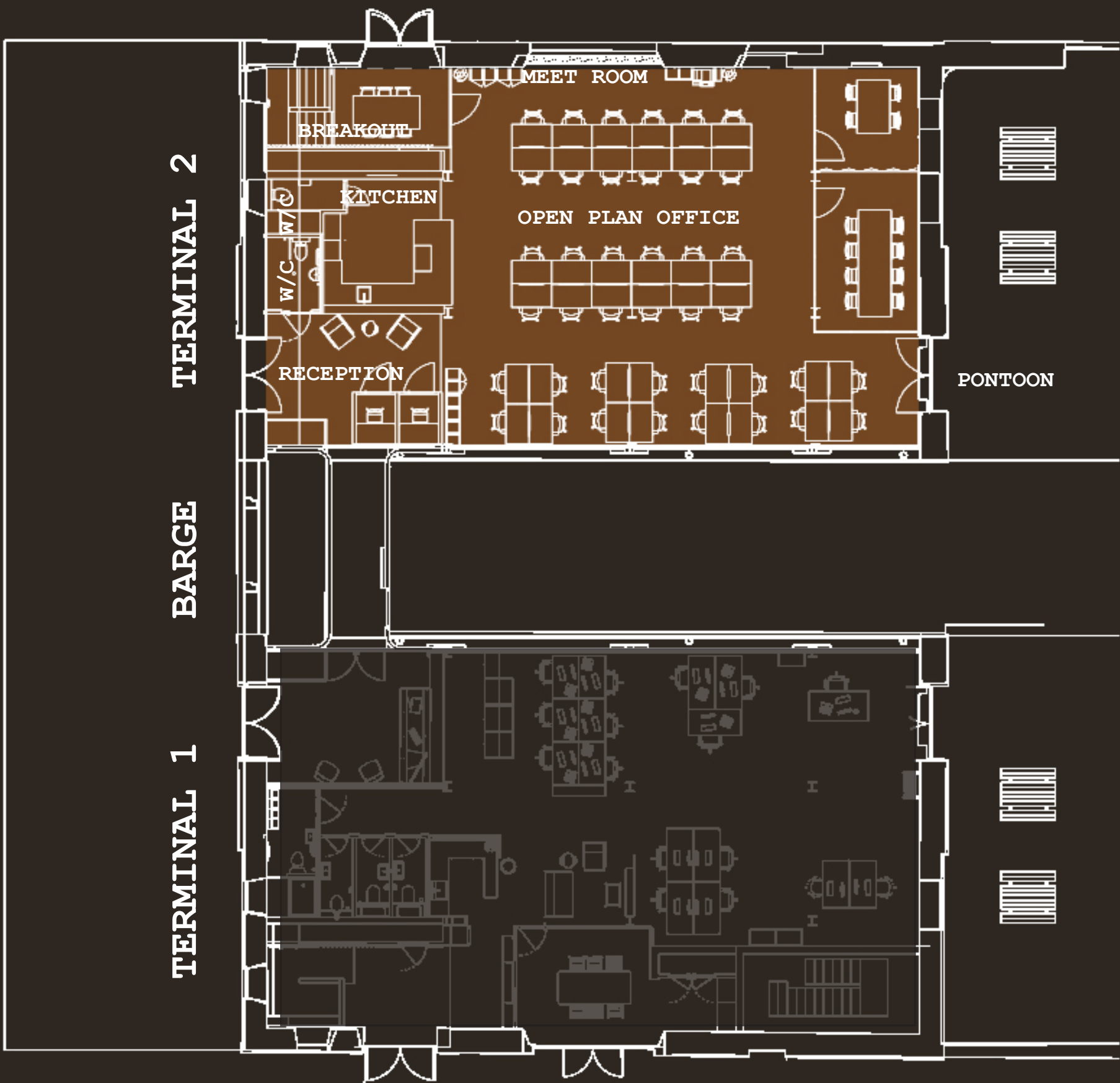
2440 SQ FT

BASEMENT FLOOR PLAN // 1300 SQ FT



SPACE PLANNING EXAMPLE

Large flexible open plan office floor plate to accommodate your staff. The follow two plans show the space with one w/c for upto 30 members of staff.



GROUND FLOOR PLAN // 2440 SQ FT // 40 PEOPLE







FURTHER INFORMATION

For further information or to arrange an inspections
please contact:

Rebecca Knight
rk@ovospaces.co.uk

or

David Baldwin
db@ovospaces.co.uk

