



UNIT 50

UNDER
REFURBISHMENT



ZONE 2

DEESIDE INDUSTRIAL PARK

TO LET

INDUSTRIAL / WAREHOUSE UNIT

SITUATED IN A PREMIER MANUFACTURING
AND DISTRIBUTION LOCATION

9,817 SQ FT (912.0 SQ M)
+ SELF CONTAINED YARD

UNIT50



ZONE2

DEESIDE INDUSTRIAL PARK

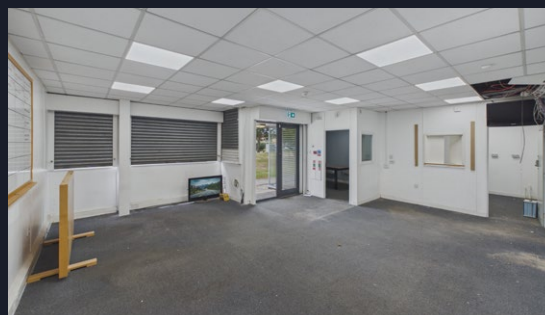


SPECIFICATION

- Steel frame construction
- 2 ground level access doors
- 5m clear working height
- Single storey office/staff accommodation
- Dedicated car parking
- Dedicated secure compound

ACCOMMODATION

Unit area	sq ft	sq m
Warehouse	7,079	657.7
GF Office	2,737	254.3
Total	9,817	912.0
Compound	10,000	929.0 sq









UNIT50
22
ZONE 2
 DEESIDE INDUSTRIAL PARK

SAT NAV REF:
CH5 2NU

LOCATION

The premises are located on Zone 2 of Deeside Industrial Park with frontage to Third Avenue, accessed via Parkway the main access road through Zone 2.

Deeside Industrial Park is off the A548/A550, two miles from the end of the M56 which provides access to the national motorway and road networks servicing North Wales and the North West.

EPC

An epc is being prepared and will be available upon request.

ANTI-MONEY LAUNDERING

Proposed tenants agree to provide evidence of their identity, management or ownership as well as recent proof of address, photographic ID and source of funding.

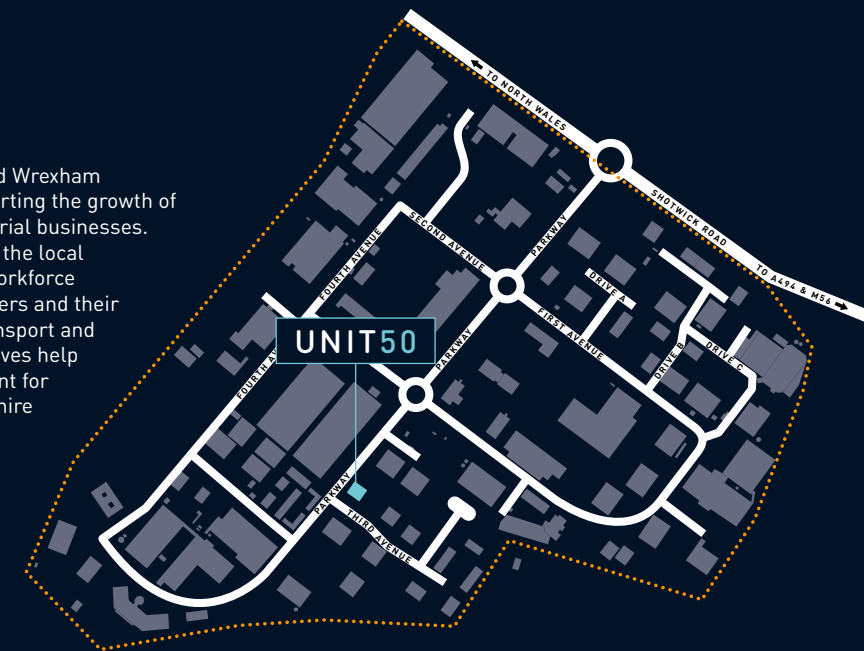
CODE FOR LEASE BUSINESS PREMISES

Please be aware of the RICS Code for Leasing Business Premises which is found **here**. We recommend you obtain professional advice if you are not represented.



The property is located within the Flintshire and Wrexham Investment Zone, a region-wide initiative supporting the growth of advanced manufacturing and high-value industrial businesses. The Investment Zone focuses on strengthening the local manufacturing ecosystem through skills and workforce development, business support for manufacturers and their supply chains, and continued investment in transport and enabling infrastructure. Together, these initiatives help create a well-connected, supportive environment for modern industrial occupiers, reinforcing Flintshire and Wrexham as an established and emerging centre for advanced manufacturing.

For more information:
 Flintshire
 E: investmentzone@flintshire.gov.uk
 Wrexham
 E: iz@wrexham.gov.uk



CONTACT

For viewings and further information, lease contact the joint agents.

WWW.ZONE2DEESIDE.COM

Mark Diaper

markdiaper@legatowen.co.uk
 01244 408236
 07734 711409

LegatOwen
 CHARTERED SURVEYORS
01244 408200
www.legatowen.co.uk

Alex Perratt

alex@b8re.com
 07951 277 612
 01925 320 520

