

AREA PLAN


55 - 57 CHARLOTTE STREET
LONDON, W1

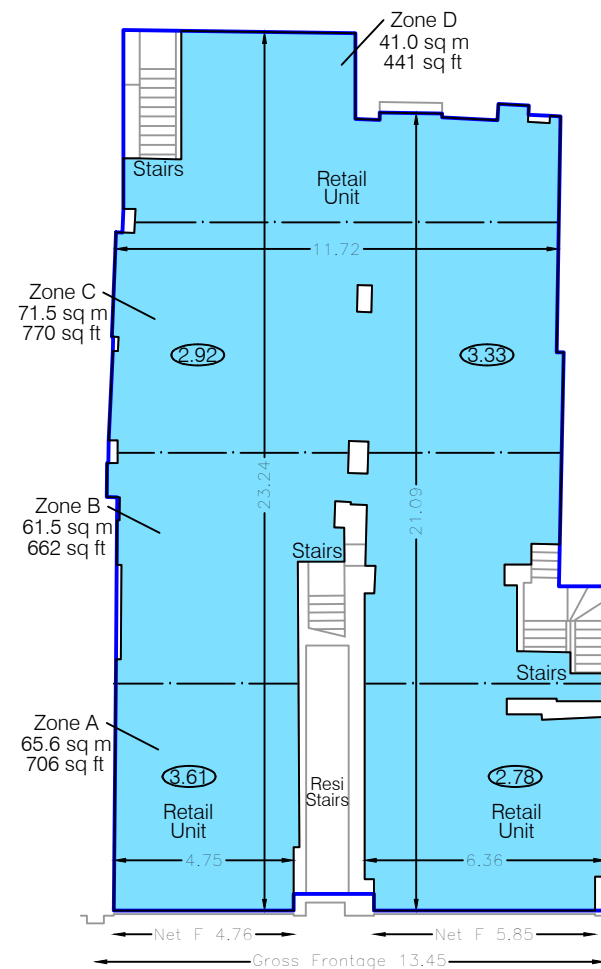
Ground Floor

Net Internal Area

	NIA - Retail	239.6 sq m	2579 sq ft
---	--------------	------------	------------

Gross Internal Area

	GIA	270.5 sq m	2912 sq ft
---	-----	------------	------------



CHARLOTTE STREET

Notes:

(X.XX) - Floor to Ceiling Height (Metres)

A dashed line denotes assumed - inaccessible due to fit out.

This drawing indicates the extent of the areas quoted, produced to an accuracy commensurate with standard presentation scales. It is held in a scaled digital CAD format.

Dwg No. LF5783-AREA-G

Issue A

August 2024

Scaled for presentation - 1:200 @ A3

Lane &
Frankham




AREA PLAN

55 - 57 CHARLOTTE STREET
LONDON, W1

Basement

Net Internal Area

 **NIA - Retail** 223.7 sq m 2408 sq ft

 **NIA - Store** 41.6 sq m 448 sq ft

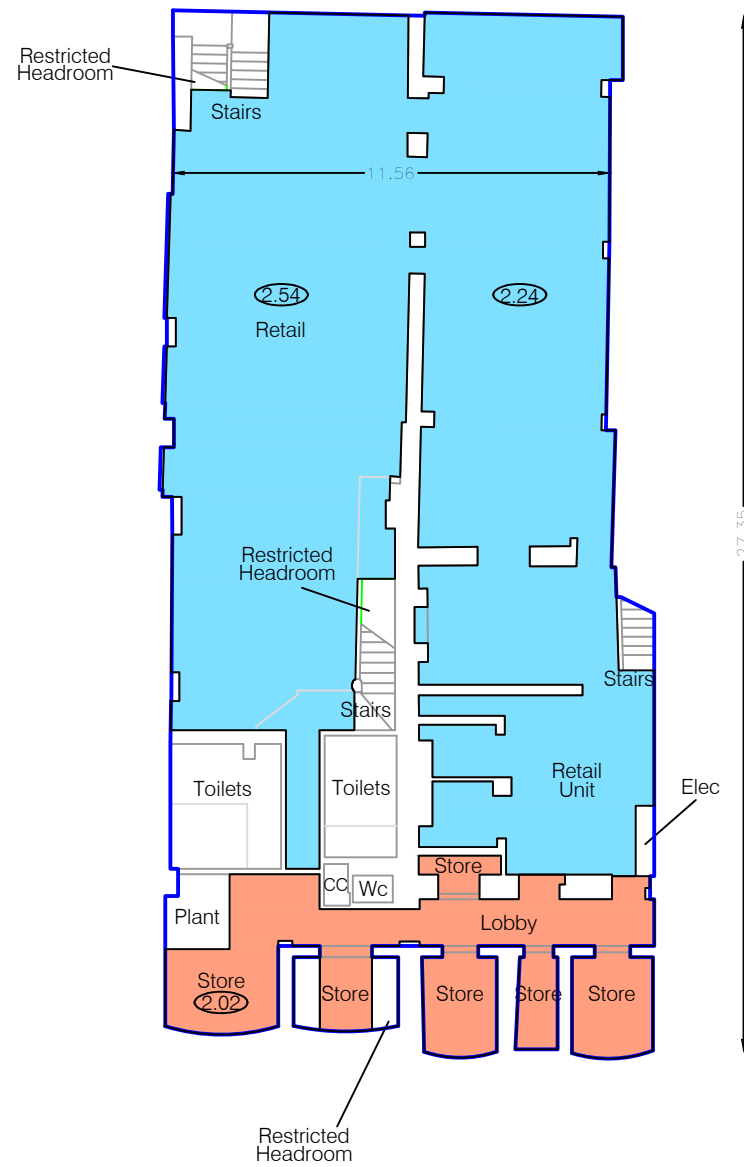
TOTAL NIA: 265.3 sq m 2856 sq ft

The following has been EXCLUDED from the TOTAL NIA:

Restricted Headroom 2.6 sq m 28 sq ft

Gross Internal Area

 **GIA** 325.1 sq m 3499 sq ft



CHARLOTTE STREET

Notes:

(X.XX) - Floor to Ceiling Height (Metres)

A dashed line denotes assumed - inaccessible due to fit out.

This drawing indicates the extent of the areas quoted, produced to an accuracy commensurate with standard presentation scales. It is held in a scaled digital CAD format.

Dwg No. LF5783-AREA-B

Issue A August 2024

Scaled for presentation - 1:200 @ A3

Lane & Frankham

