

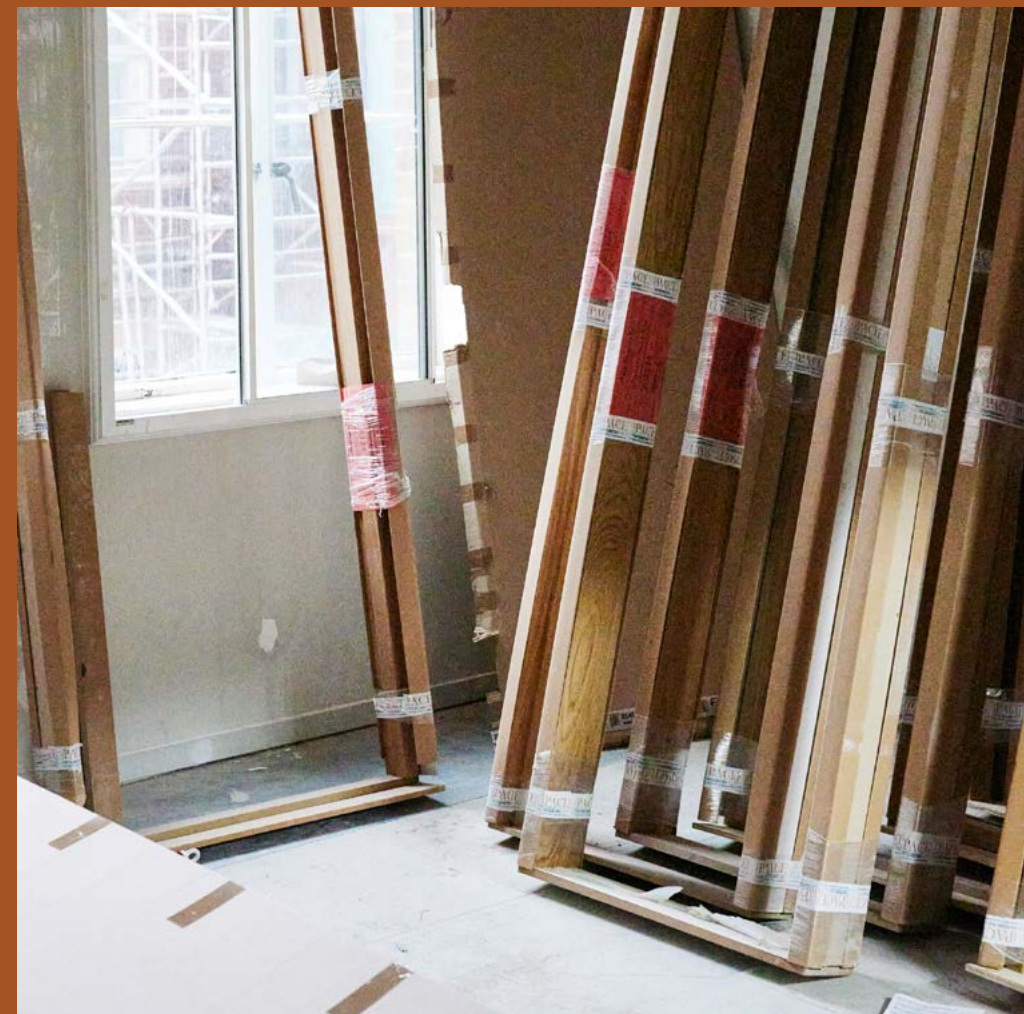


CHANCERY HOUSE

HOLBORN



Sustainable choices



TOG
WORK SPACES



Design with a purpose



For a more sustainable Work Space, we have made conscious choices throughout the process of designing Chancery House.

This Work Space has over 10,500 sq ft of shared outdoor spaces. The former car park has been transformed into a public garden and we have created a green roof to support biodiversity.

Our rain water harvesting system for use in WCs and to water our plants reduces our water consumption. And the windows can be opened to let in fresh air and reduce energy consumption.

We have also raised the EPC rating from D to B, eight years ahead of proposed UK MEES legislation.



(Top) Café
(Left) Meeting room
(Right) Exterior



100%

Electricity procured from renewable sources, with additional solar panels installed on the roof.

98%

of construction waste diverted from landfill*.

33%

Less upfront embodied carbon than current LETI (London Energy Transformation Initiative) guidelines for commercial offices builds.



BREEAM Excellent Rating

By assessing the environmental, social and economic sustainability, BREEAM ensures our optimal and sustainable performance while reducing operational and embodied carbon emissions.



Award-winning partners

“Our approach to Chancery House was inherently sustainable. We made the building more efficient to operate, added light wells and transformed a car park into a garden, increasing biodiversity and providing a public green space.”

Ben Knight
Director at dMFK

We have once again joined forces with Norm Architects and dMFK, who won a RIBA London architecture award for our York House Work Space.

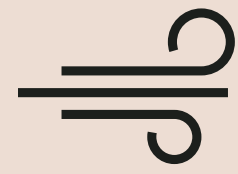
Norm Architects’ design is guided by ideas that not only look good but also feel good, and they have previously designed Linden Palais, our stunning Work Space in the heart of Berlin.

With respect to the history of the building, dMFK have made carefully considered upgrades through increased permeability, high-quality landscaping, and improved sustainability and wellness.

(Left) Lower ground floor lounge

dMFK NORM ARCHITECTS

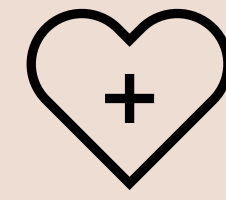
A better environment



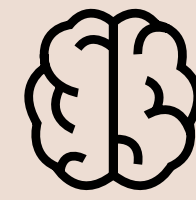
Breathe easy knowing that we have improved air quality through ongoing filtration and ventilation.



Stay alert throughout the day with optimal light levels designed to fit your circadian rhythm.



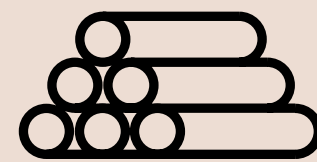
Enjoy plenty of healthy food options in our café, kitchens, meeting rooms and communal areas.



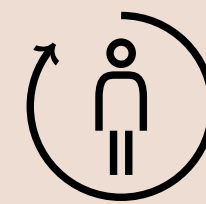
Prioritise your mental health through light, nature and activity that have been integrated into the design.



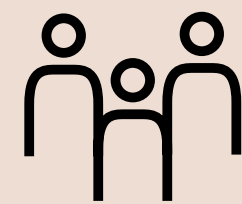
Focus better with acoustic design planning to reduce distractions, with sound barriers and quiet zones.



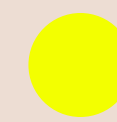
Feel assured knowing that we have used safer building materials throughout the construction.



Be comfortable in your environment with our system for optimising and monitoring temperatures.



Connect with other members and enjoy accessible communal spaces that support your needs.



WELL Platinum Certification

We are targeting a WELL Platinum Certification to create a better environment for everyone in Chancery House. This certification draws on more than seven years of research and development from leading physicians, scientists and industry professionals.



(Right) Office



CHANCERY HOUSE

HOLBORN



Adam Egan

adam@theofficegroup.co.uk
07747 466592

James Bocking

jamesb@theofficegroup.co.uk
07384 112773

Kitty Lee

kitty@theofficegroup.co.uk
07384 259123

Richard Webb

richard@theofficegroup.co.uk
07904 127482

H
E
D
G
E

Paul Gold

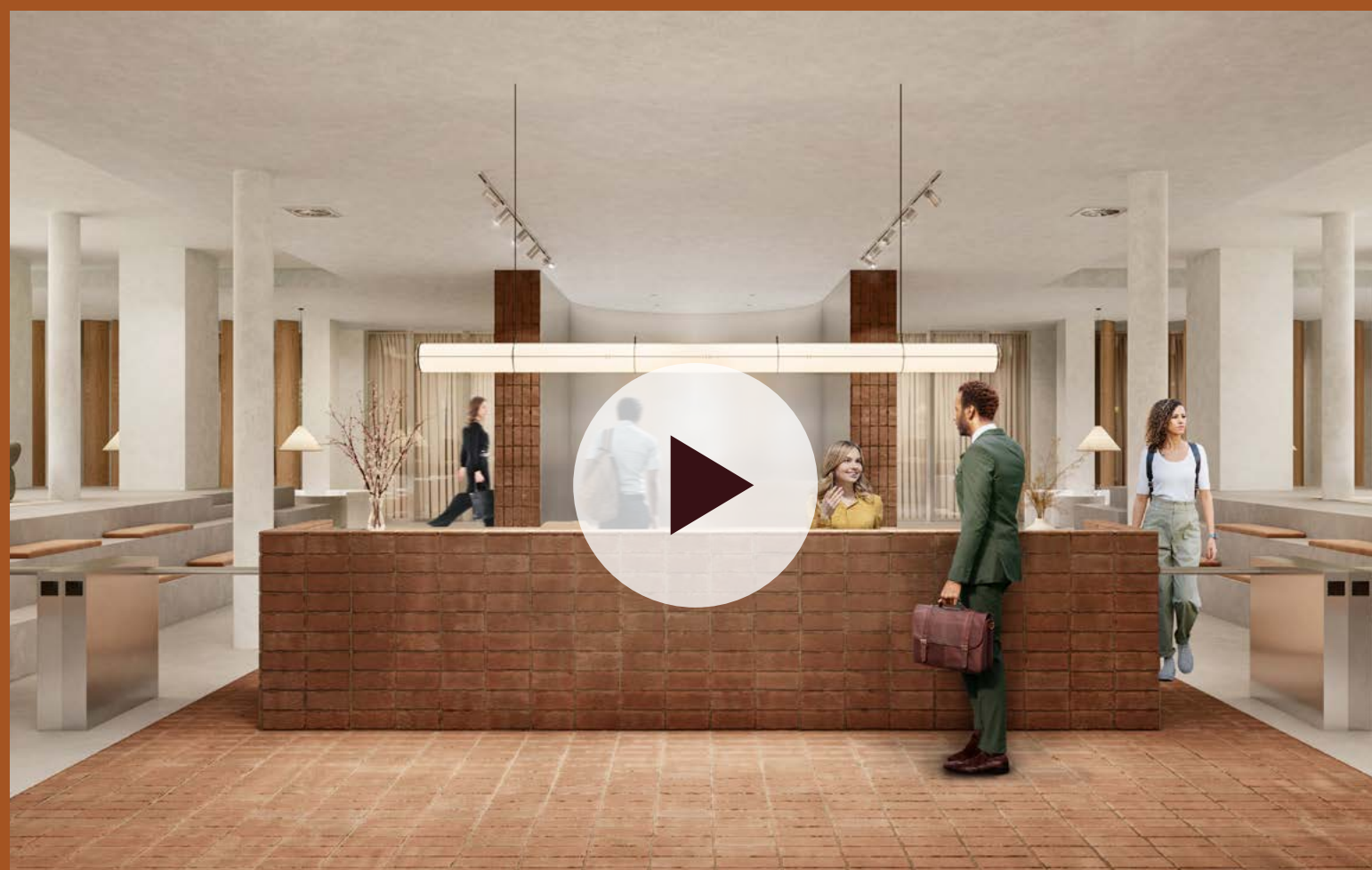
paul.gold@hedge-re.co
0207 5804 797
07779 100875

Ben Orchard-Smith

ben.orchard-smith@hedge-re.co
07557 988 115

Andrew Gibson

andrew.gibson@hedge-re.co
0207 5804 797
07866 602381



Watch the Chancery House flythrough

No warranty or representation, express or implied, is made to the accuracy or completeness of the information contained herein, and same is submitted subject to errors, omissions, change of price, rental or other conditions, withdrawal without notice. As applicable, we make no representation as to the condition of the property (or properties) in question.



WORK SPACES