

FIELD & SONS

COMMERCIAL



BOROUGH MARKET

PADELL

Birrane House
2-4 Southwark Street,
London, SE1 1TQ



Birrane House

High Quality Office Suite

1,237 sq ft | 115 sq m

4th Floor Refurbished Office To Let

Birrane House

High Quality Office Suite

Location

Birrane House occupies a prime Southbank location on the corner of Southwark Street and Bedale Street at the entrance to Borough Market, opposite London Bridge Station and Underground.

Being next to the Market there is a vast array of food and produce stalls, traditional restaurants and bars all moments from the premises.

Description

The entire building has been comprehensively refurbished and provides premium high quality office accommodation over four floors.

Fourth floor available arranged as a main open plan space plus glazed meeting room, smaller private room plus fully equipped kitchen point.

Excellent natural light with sweeping panoramic views across the City.

Accessed via the ground floor reception hallway with stairs and passenger lift to the upper floors.

W.C.s and showers in the communal areas, including fully DDA compliant.

Availability

Fourth floor : 1,237 sq ft (115 sq m).



Birrane House

High Quality Office Suite

Amenities

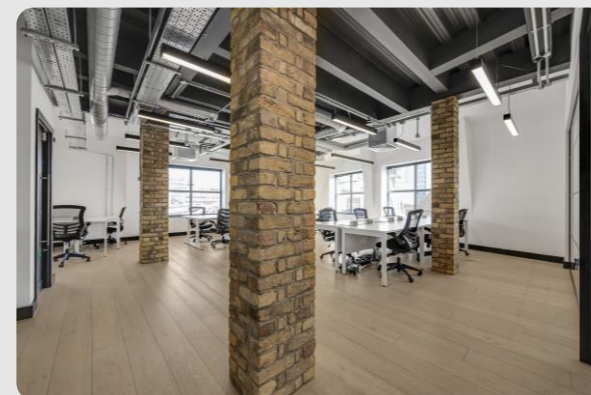
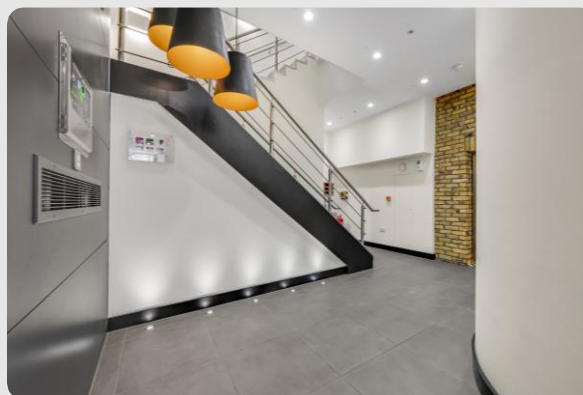
- Air conditioning
- Fresh air ventilation
- Suspended linear LED lighting
- Wood flooring
- Exposed services
- Meeting booth
- Passenger lift
- Excellent natural light
- W.C.s and showers in common parts
- DDA compliant
- Fully refurbished building
- Available fitted & furnished

Terms

New lease direct on terms by negotiation.

Rent

£92,775 per annum, exclusive. VAT applicable.



Birrane House

High Quality Office Suite

Business rates

Approx. £35,525 payable for the year 2026/27 (the Rateable Value being £72,500).

Service charge

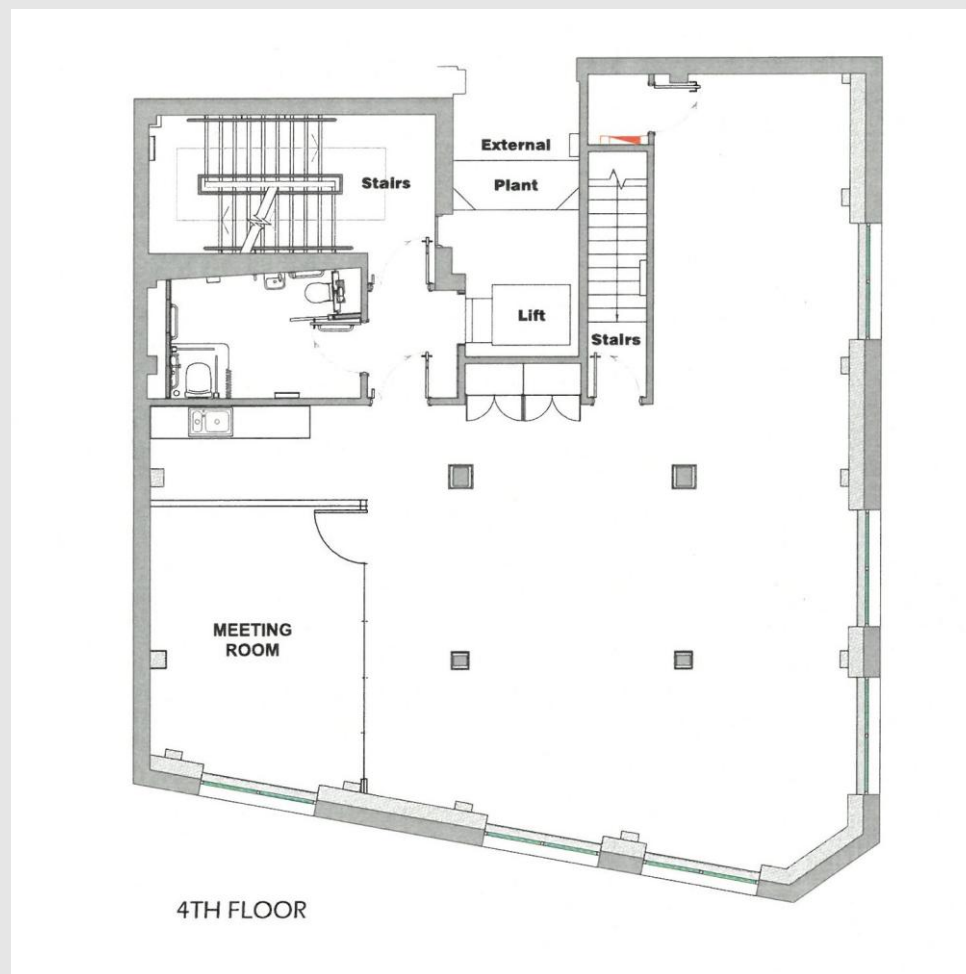
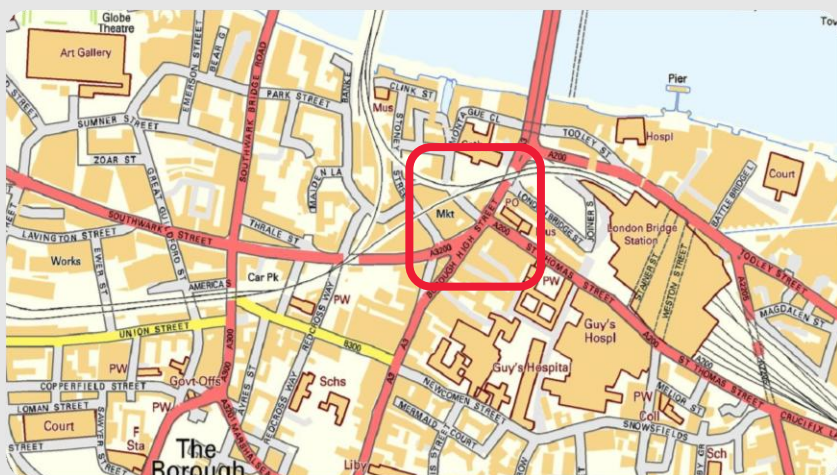
Approx. £16,777.31 per annum plus VAT.

Energy performance

EPC Asset Rating = 44 (Band B).

Address

Fourth Floor
Birrane House
2-4 Southwark Street, London SE1 1TQ



Birrane House

High Quality Office Suite



For further details, please contact:
Ben Locke or Nigel Gouldsmith
Tel: **020 7234 9639**
E-mail: com@fieldandsons.co.uk

www.fieldandsons.biz

Disclaimer - Field & Sons for themselves and for their clients of this property whose agents they are give notice that: 1) These particulars are set out as a general outline only for the guidance of intending purchasers/tenants and do not constitute part of any offer or contract. 2) All descriptions, dimensions, references to conditions and necessary permissions for use and occupation and other details are given without responsibility and any intending purchaser or tenant should not rely on them as statements or representations of fact but must satisfy themselves by inspection or otherwise as to the correctness of each of them. 3) No person in the employment of Field & Sons has any authority to make or give any representation or warranty whatsoever in relation to this property.