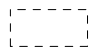


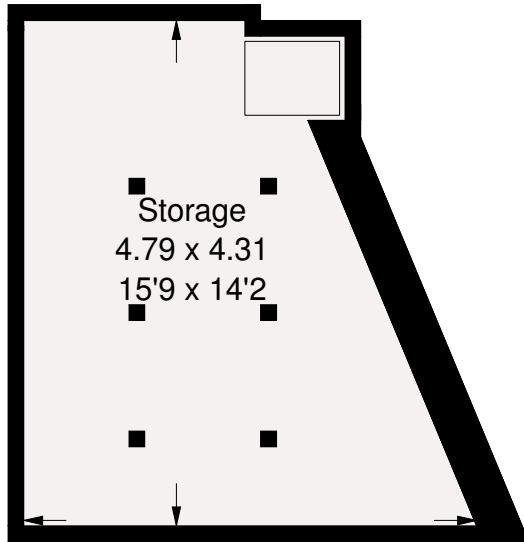
# Fulham Road, SW6

Approx. Gross Internal Area = 52.2 sq m / 562 sq ft

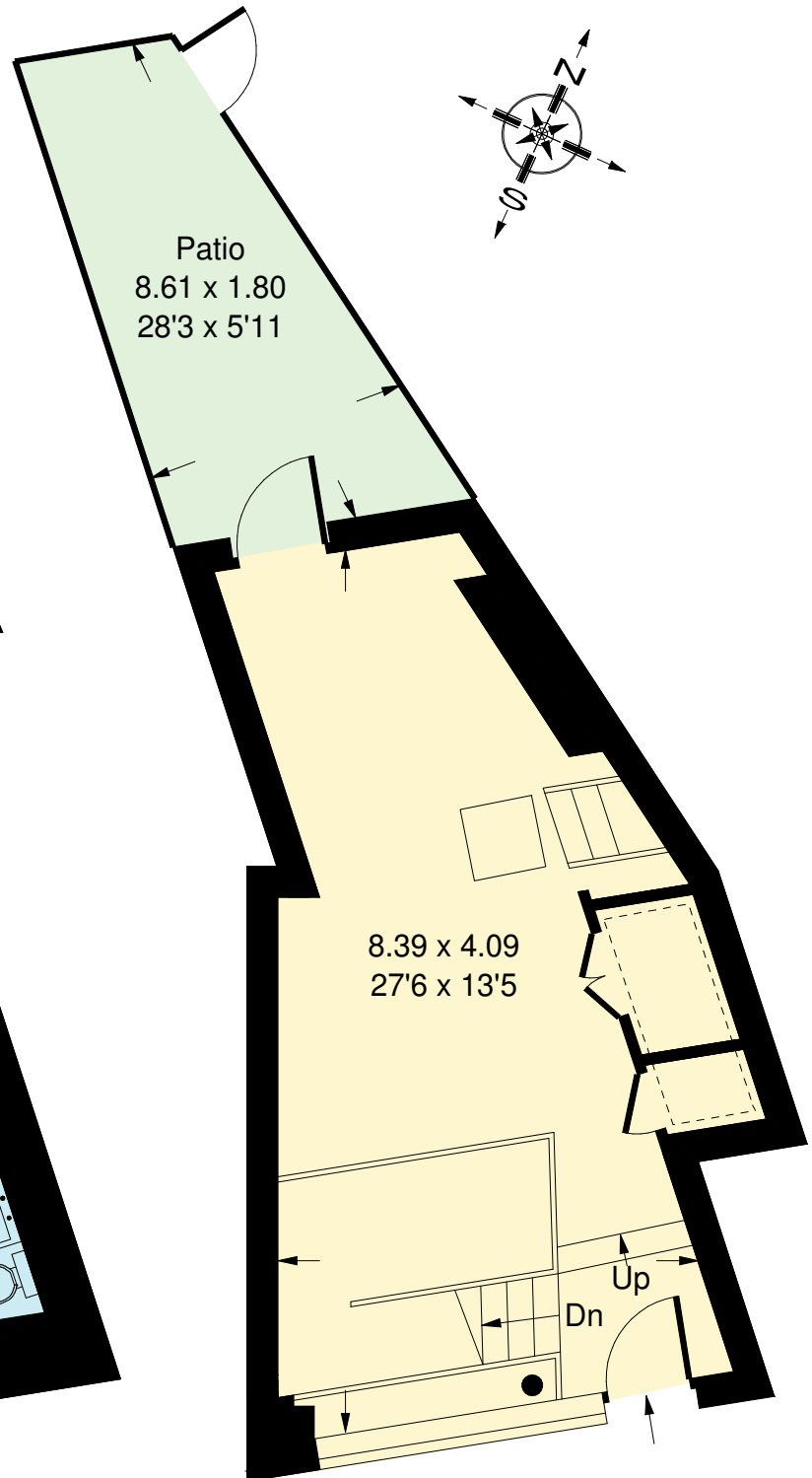
Storage = 16.2 sq m / 174 sq ft

Total = 68.4 sq m / 736 sq ft

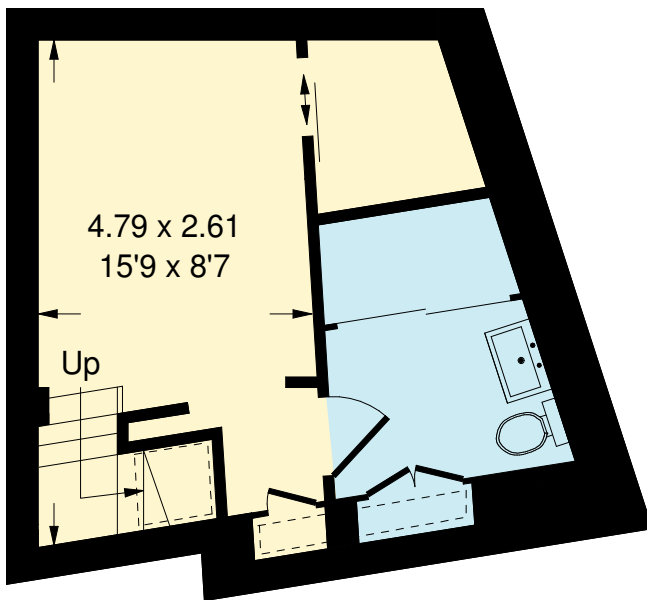
 = Reduced headroom  
below 1.5 m / 5'0"



**Loft**



**Ground Floor**



**Lower Ground Floor**

Whilst every attempt has been made to ensure the accuracy of the floor plan, measurements are approximate and not to scale.  
No guarantee is given on the total square footage of the property quoted on the plan. Figures given are for guidance.  
Plan is for illustration purposes only, not to be used for valuations.