



STRETTONS

EST. 1931

The Textile Building, Unit 5, 2a Belsham Street, Hackney, London, E9 6NJ

TO LET

Leisure / Office / Studio / Workshop

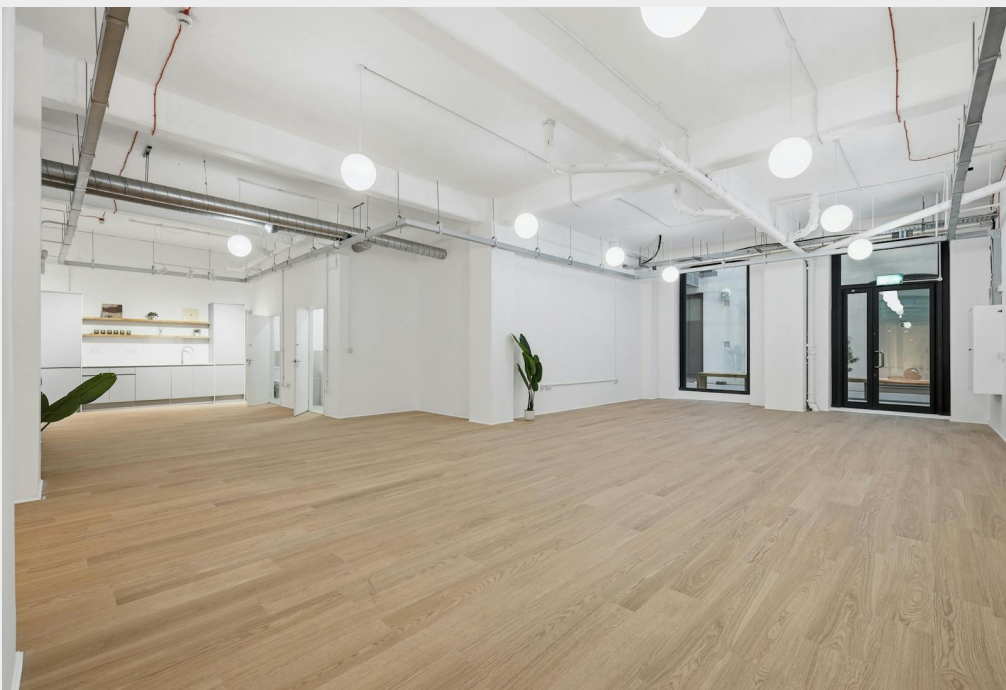
1,676 sq ft / 155.7 sq m

£21.50 per sq ft

Creative Studio / Office / Workshop / Storage space in Central Hackney



- Brand new fit-out
- Creative and versatile workspace
- Ground floor unit with good loading from street level
- Excellent ceiling heights
- Private WC's
- Suitable for a range of uses
- Access to a communal courtyard and concierge

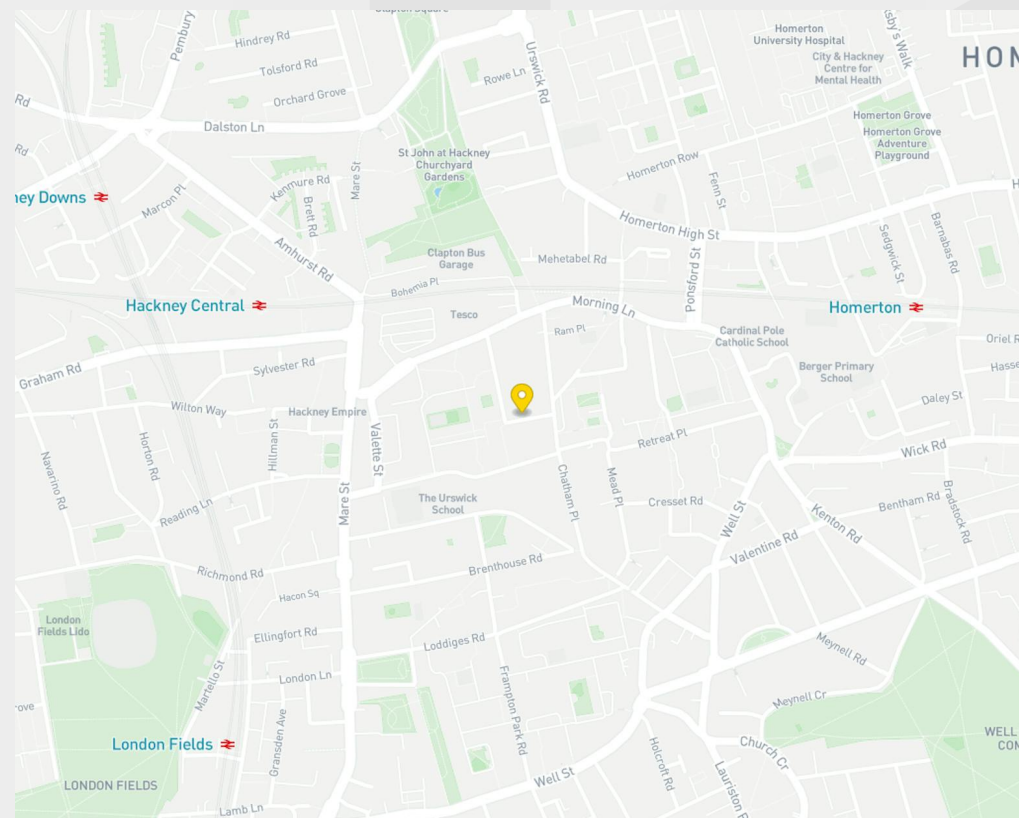


Description

The Textile Building is a mixed use, warehouse style development which is host to a range of occupiers including creative agencies, fashion designers and well known global brands. The unit offers a brand new fit-out including private Kitchenette and WC.

Location

Located on Chatham Place in the heart of Hackney Wick's luxury designer outlet area. The immediate location is home to a number of recognised retailers including Burberry and Nike, alongside various showrooms and local businesses. Hackney Central Station (overground services to Stratford, north and west London) is an eight minute walk from the property. Hackney Downs and London Fields overground Stations are also a short walk from the property, with trains running every 15 minutes to Liverpool Street Station taking 7-9 minutes.



Accommodation / Availability

Unit	Sq ft	Sq m	Rent	Rates payable	Service charge	Total month	Availability
Unit - 5	1,676	155.71	£21.50 /sq ft	£15.93 /sq ft	£4.96 /sq ft	£5,920.47	Available

Tenure

New Lease

EPC

C

VAT

Upon enquiry

Configuration

Not Fitted

Contacts

Tom Schwier
07583 037 559
tom.schwier@strettons.co.uk

Joel Barnes
07974 625 109
joel.barnes@strettons.co.uk



Strettons and their clients give notice that: 1. They are not authorised to make or give any representations or warranties in relation to the property either here or elsewhere, either on their own behalf or on behalf of their client or otherwise. They assume no responsibility for any statement that may be made in these particulars. These particulars do not form part of any offer or contract and must not be relied upon as statements or representations of fact. 2. Any areas, measurements or distances are approximate. The text, photographs and plans are for guidance only and are not necessarily comprehensive. It should not be assumed that the property has all necessary planning, building regulation or other consents and the Agents have not tested any services, equipment or facilities. Purchasers must satisfy themselves by inspection or otherwise. Generated on 06/05/2026