

Spaceplans

36-38 Hatton Garden

12/02/2025

whitepaper

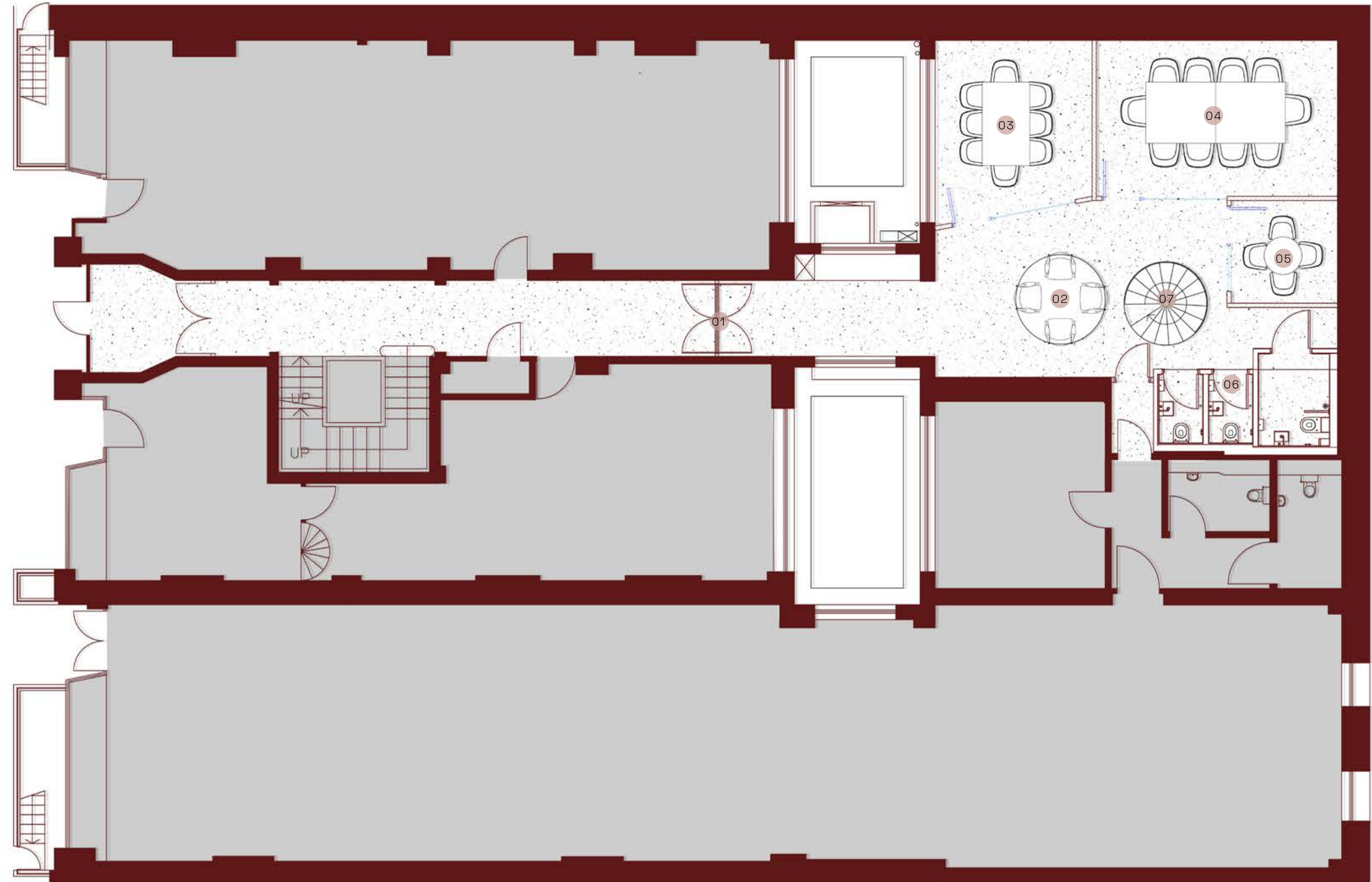
# Space | GA Plan | Ground Floor

## Ground Floor

1037 sqft | 96 sqm

### KEY

- 01 ENTRANCE
- 02 SEATING AREA
- 03 8-PERSON MEETING ROOM
- 04 10-PERSON MEETING ROOM
- 05 4-PERSON MEETING ROOM
- 06 WC'S
- 07 STAIRS



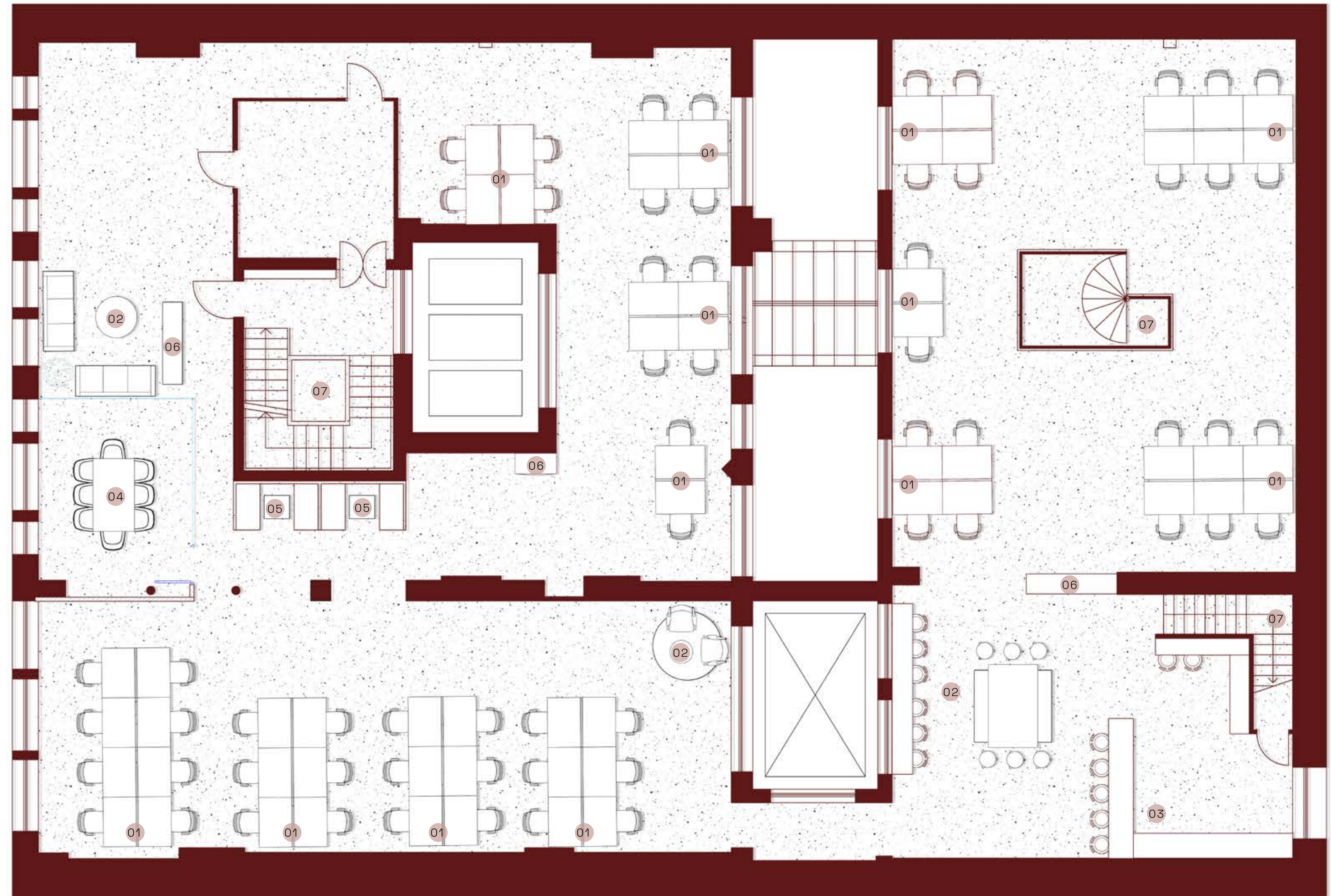
# Space | GA Plan | First Floor

## First Floor

4958 sqft | 460 sqm

### KEY

- 01 OPEN PLAN DESKING
- 02 BREAKOUT AREA
- 03 TEAPOINT
- 04 8-PERSON MEETING ROOM X2
- 05 BOOTH SEATING
- 06 STORAGE
- 07 STAIRS



w  
.  
p

Thank you.

7-10 Bateman's Row, London, EC2A 3HH

+44 (0) 203 859 4444

hello@whitepaperco.com