

Park House

Park House, 206-208 Latimer Road, London, W10 6QY

- Characterful, smart brick fronted victorian building in a private forecourt area
- 7 mins to Latimer Road station, 10 mins to Ladbroke Grove station
- Communal areas have been fully renovated
- Bike racks, pet friendly, 24 hr access, parking





G floor (Unit B)

- 1,226 sq ft
- 25 desk capacity
- Existing features: kitchen
- Customisable features: meeting rooms, break out spaces, collaboration spaces, office layout, branding
- **£12,400 per month** (£121 p/sf) **+VAT**



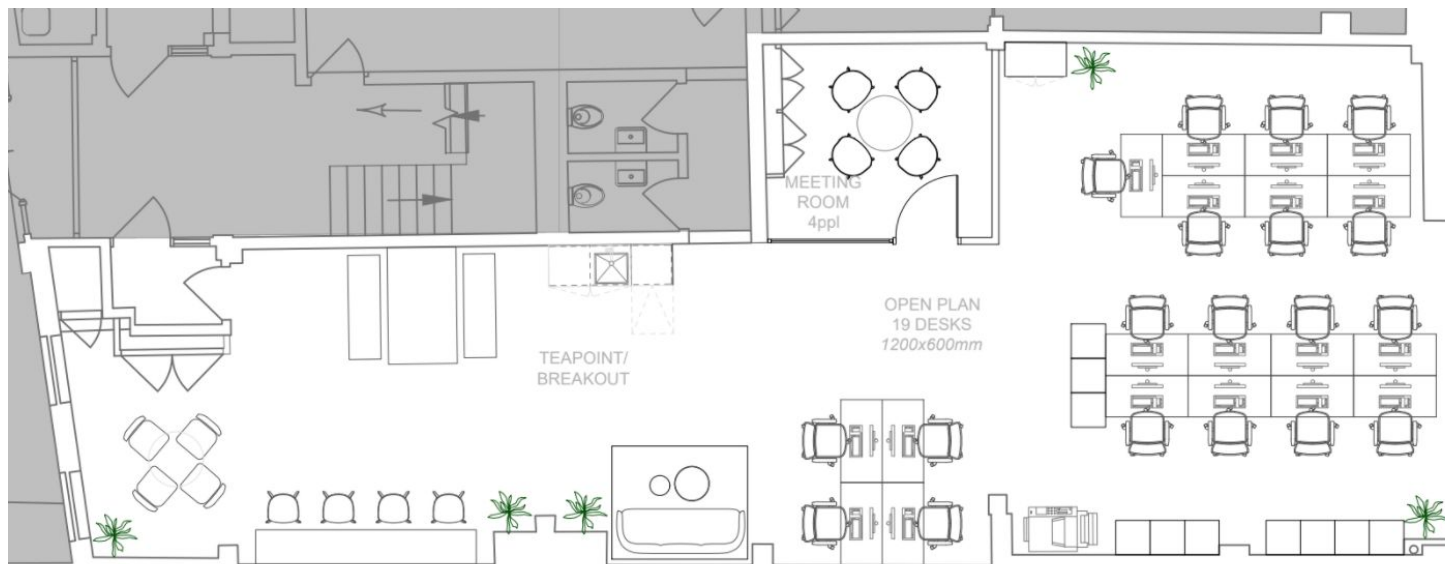
© 2020 Kitt | All rights reserved



Potential layouts

kitt

A layout that suits how your team works best



19 desks

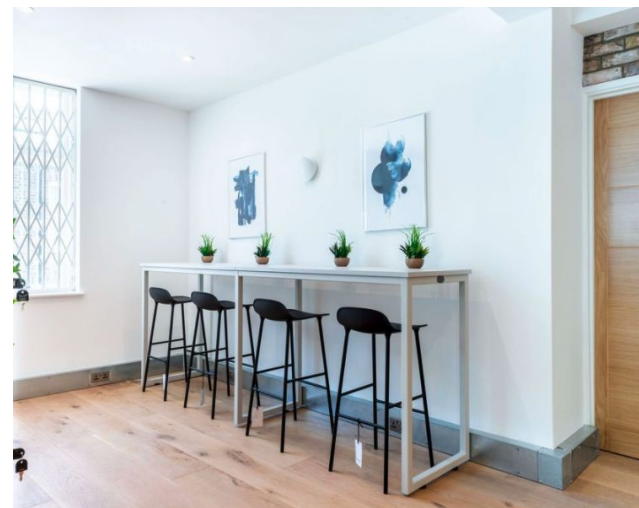
1st floor (Unit C)

- 870 sq ft
- 17 desk capacity
- Existing features: kitchen
- Customisable features:
meeting rooms, break out
spaces, collaboration spaces,
office layout, branding
- **£8,800 per month** (£121 p/sf) **+VAT**





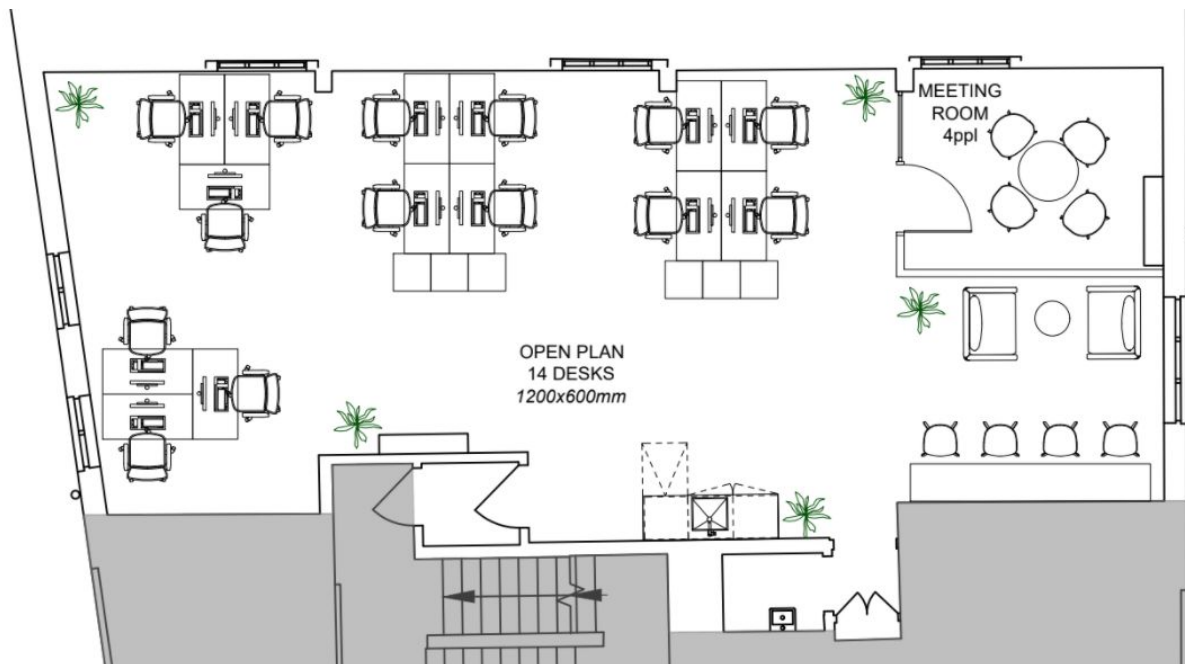
© 2020 Kitt | All rights reserved



Potential layouts

kitt

A layout that suits how your team works best



14 desks

1st floor (Unit D)

- 800 sq ft
- 10 desk capacity
- Existing features: kitchen
- Customisable features:
meeting rooms, break out
spaces, collaboration spaces,
office layout, branding
- **£8,000 per month** (£120 p/sf) **+VAT**





2nd floor (Unit E)

- 554 sq ft
- 14 desk capacity
- Existing features: kitchen, 8x desks, breakout furniture
- Customisable features: office layout, branding
- **£5,600 per month** (£121 p/sf) **+VAT**



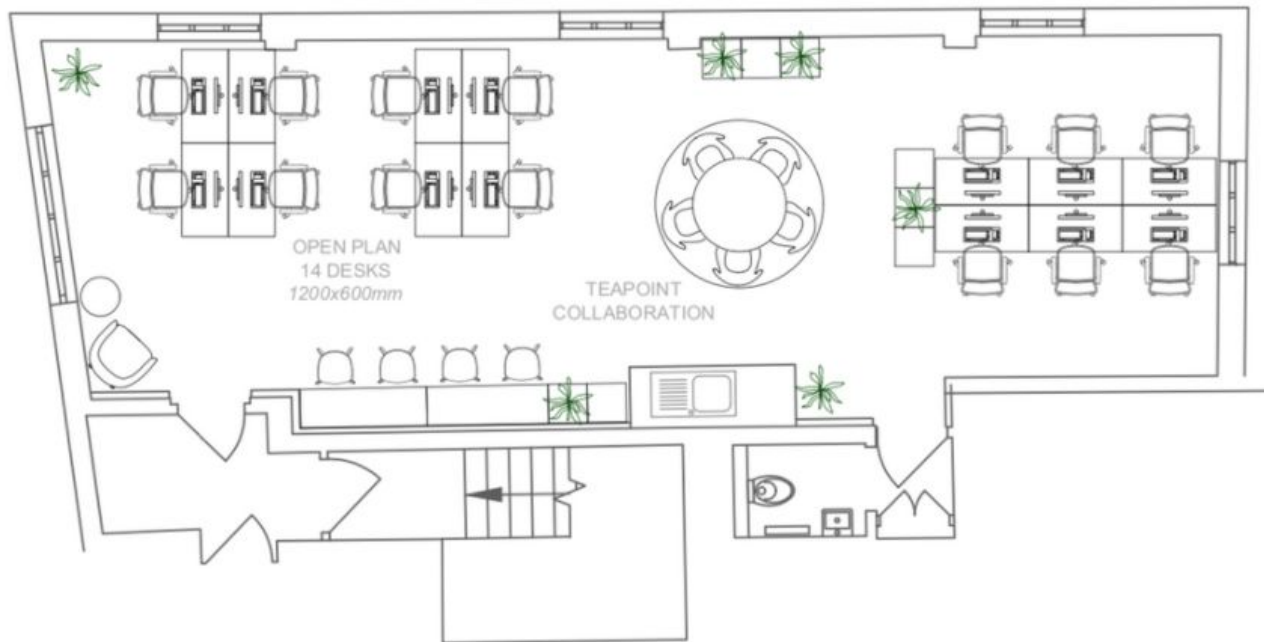
© 2020 Kitt | All rights reserved



Potential layouts

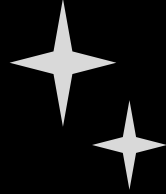
kitt

A layout that suits how your team works best





VR magic



CONTACT

SHAUN WOLFE

swolfe@frostmeadowcroft.com

www.frostmeadowcroft.com

frost
meadowcroft
020 8748 1200