



**ST JAMES**  
**QUARTER**  
EDINBURGH





ST.  
JAMES  
SQUARE



# UNIQUE SPACES

AT THE HEART OF ST JAMES QUARTER

St James Quarter, one of the largest mixed-use spaces in the UK has changed the face of Edinburgh's retail and leisure landscape.

Designed in keeping with the city's original 250-year-old masterplan, the multiuse development connects the old with the new via public realm and open spaces.

At the heart of the new quarter is St James Square, offering six unique units within an enhanced and newly renovated, historic and characterful Georgian building.

# ST. JAMES SQUARE

Just a short walk from Princes Street and Waverley Station, adjacent to Harvey Nichols and the luxury stores of Multrees Walk and St James Quarter's own premium retail stores on its upper galleria level, St James Square is the focal point of the scheme and the location of the new W Edinburgh hotel.

St James Square will benefit from the wealth of restaurants, shops, leisure spaces and hotels which power the success of St James Quarter, and will retain a unique identity through an exclusive collection of independent and one off brands in a classic listed building juxtaposed to the iconic W Edinburgh.

St James Square features one of the development's two original buildings, which have been entirely modernised and brought back to life through the addition of new shopfronts whilst maintaining the splendour of the original building, reflecting Edinburgh's style and character.

St James Square is a unique collection of units at the heart of this transformative destination.



# THE MIX



Spaces that are unrivalled in Edinburgh in use, adjecencies and character – think boutique fashion, speciality food and wine shops, yoga studio and wellness and beauty.

The opportunity and integration with the wider Quarter won't stop there...

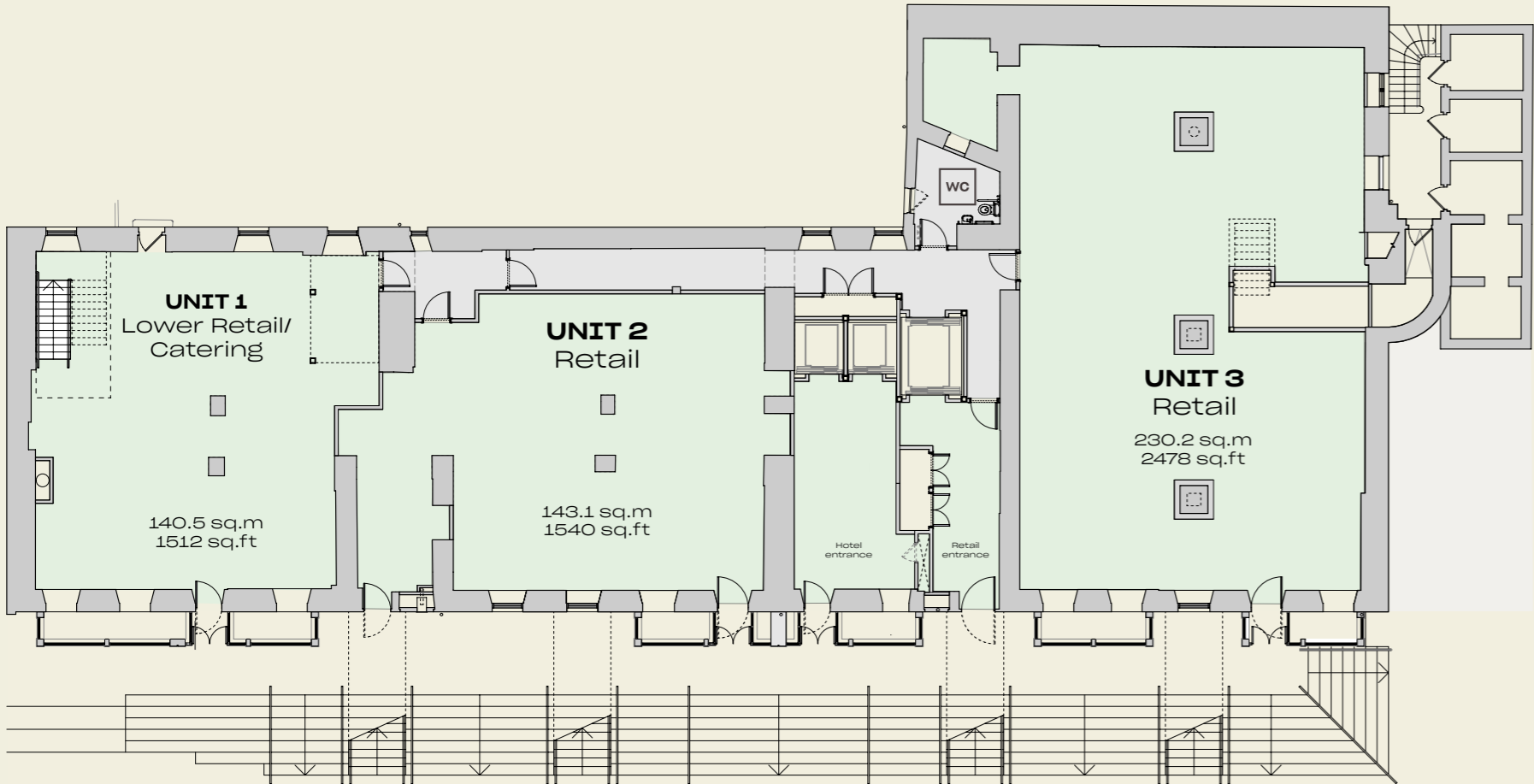
Our vision is to regularly activate the square with events, fashion shows, as a festival venue, and seasonal activity.



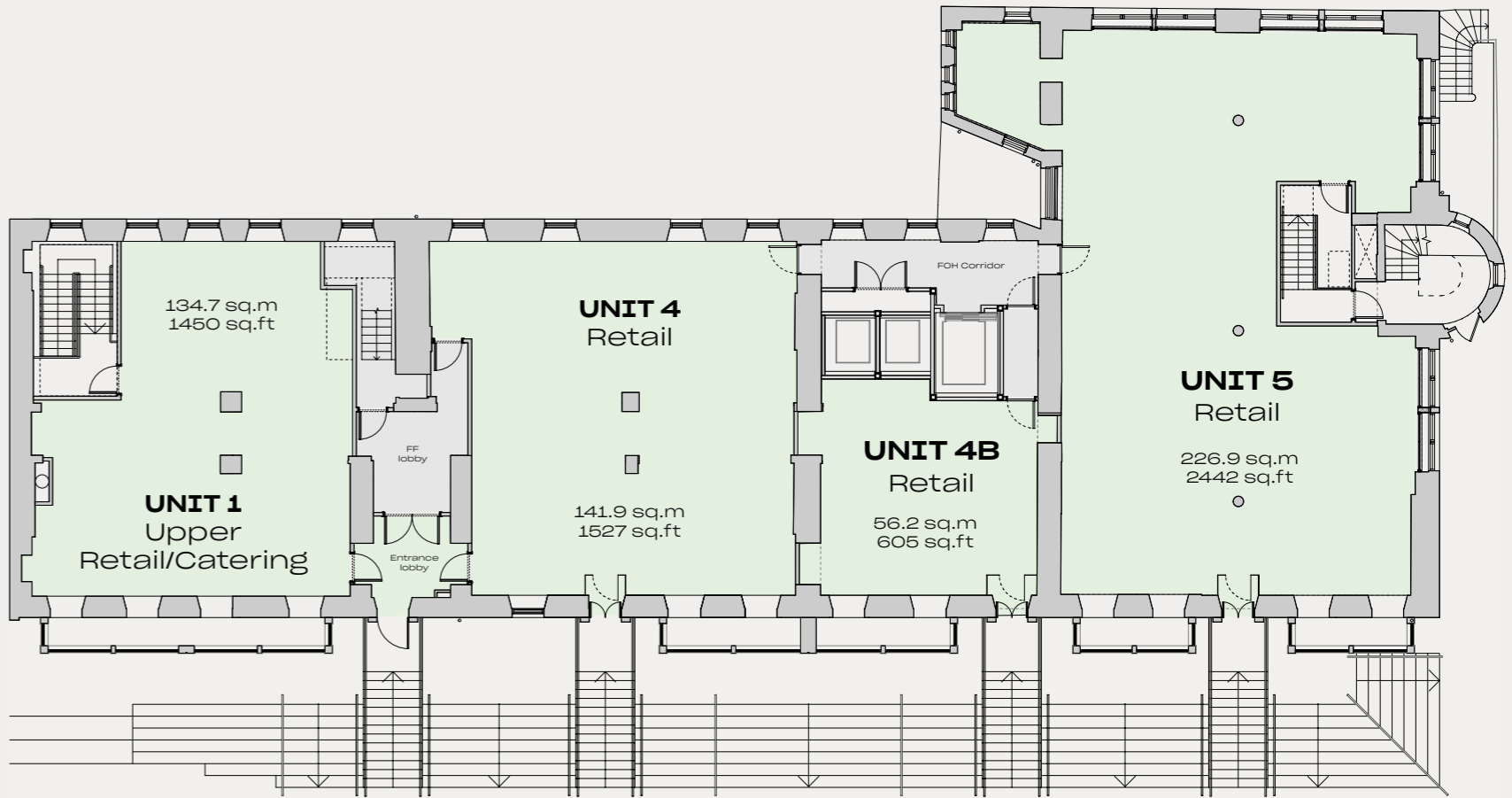


# UNITS SUMMARY

## LOWER GROUND FLOOR

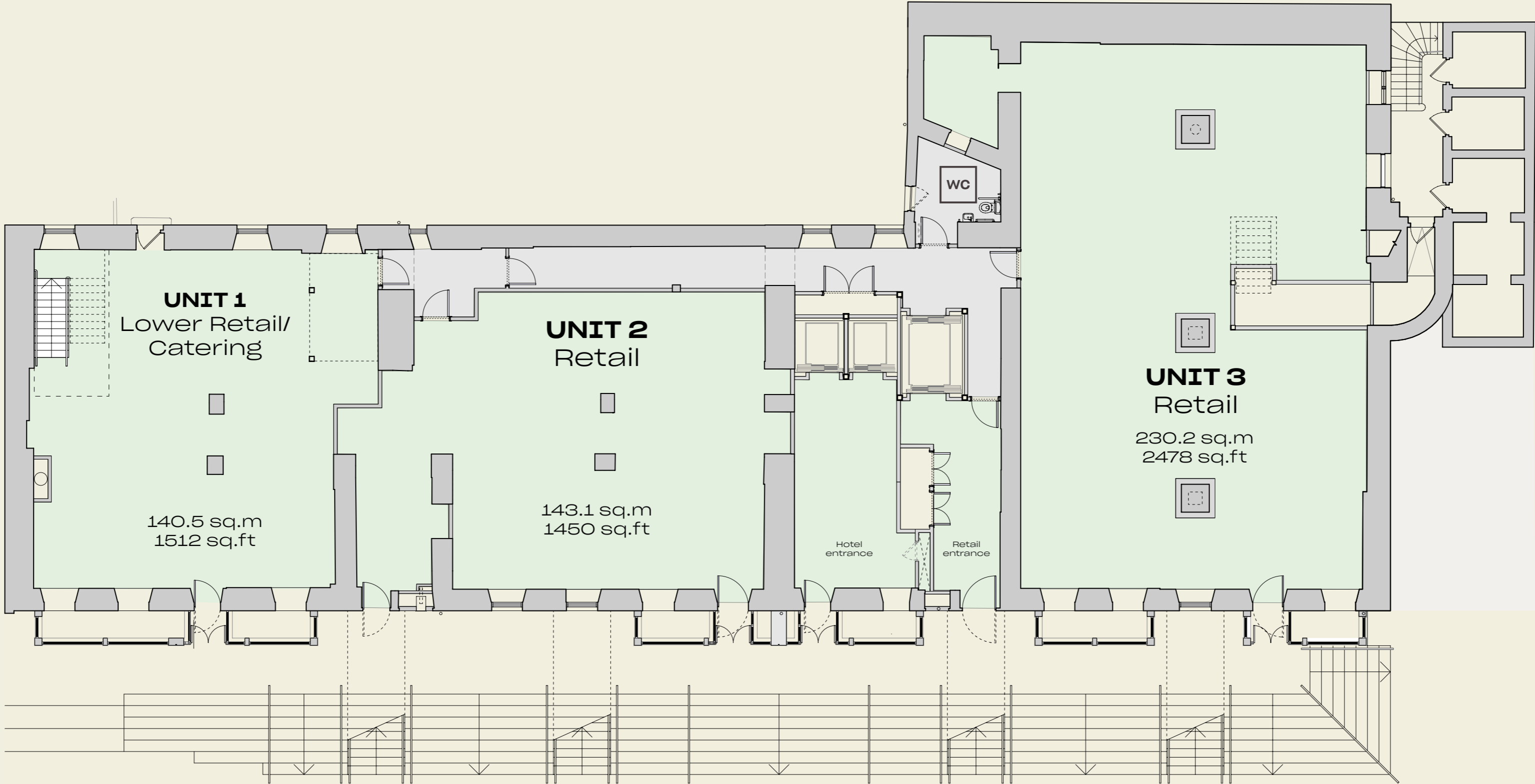


## UPPER GROUND FLOOR





# LOWER GROUND FLOOR



↓ TO ST. JAMES SQUARE ↓

# ST. JAMES SQUARE

We're extremely proud of the depth of offer and variety of experiences in and around St James Quarter, all of which are attracting attention and footfall. Locals and visitors alike can take their pick from fashion shows, pop-up vintage markets, Edinburgh Fringe shows, food festivals and much more.

In late 2023, the opening of the ubercool W Edinburgh, directly facing St James Square, is set to be the icing on the cake, adding even more excitement to this already sought-after location.



# CONTACTS

## RETAIL CONTACTS

### Culverwell

**James Godfrey**  
james@culverwell.co.uk  
+44 (0)7768 190 114

**Alex Culverwell**  
alex@culverwell.co.uk  
+44 (0)7831 504 570

### P-THREE

**Hannah McNamara**  
hannah@p-three.co.uk  
+44 (0)7764 398 198

**Justin Taylor**  
justin@p-three.co.uk  
+44 (0)7739 174 184

### CBRE

**Jon Watson**  
jonathan.watson@cbre.com  
+44 (0)7919 301 381

**Scott Murdoch**  
Scott.Murdoch@cbre.com  
+44 (0)7973 734 130

## F&B/LEISURE CONTACTS

### Culverwell

**James Godfrey**  
james@culverwell.co.uk  
+44 (0)7768 190 114

**Alex Culverwell**  
alex@culverwell.co.uk  
+44 (0)7831 504 570



**Victoria Broadhead**  
victoria@brucegillinghampollard.com  
+44 (0)7793 158 133